

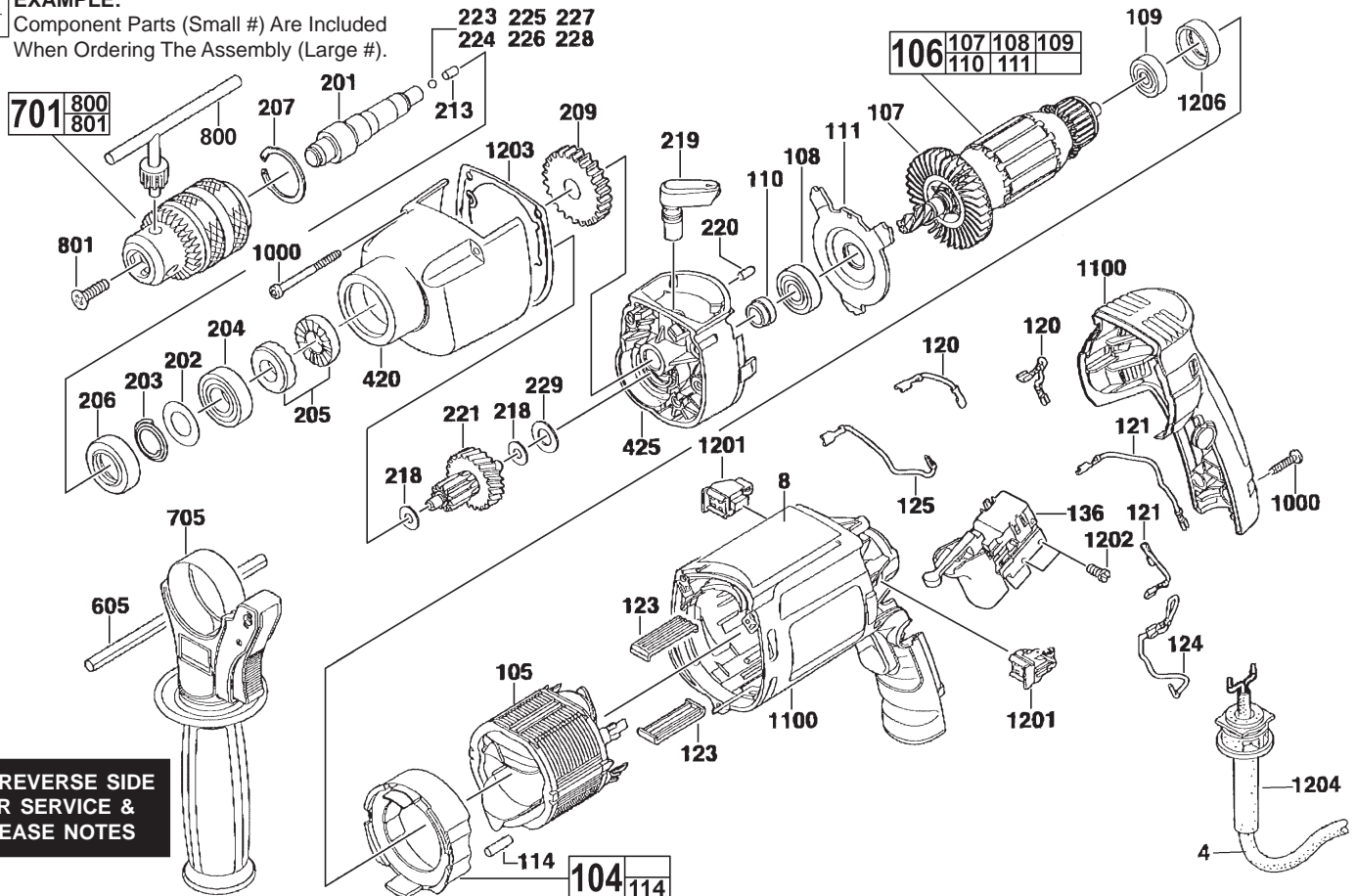


# SERVICE PARTS LIST

**BULLETIN NO.**  
**54-24-0360**

SPECIFY CATALOG NO. AND SERIAL NO. WHEN ORDERING PARTS		REVISED BULLETIN	DATE
<b>1/2" HAMMER-DRILL</b>			Feb. 2009
CATALOG NO.	<b>5381-20</b>	SERIAL NUMBER	<b>A67A</b>
		WIRING INSTRUCTION <b>58-01-0126</b>	

**EXAMPLE:**  
Component Parts (Small #) Are Included  
When Ordering The Assembly (Large #).



**SEE REVERSE SIDE  
FOR SERVICE &  
GREASE NOTES**

FIG.	PART NO.	DESCRIPTION OF PART	QTY.	
	4	22-64-1640	CORD SET	1
	8	12-99-5381	SERVICE NAMEPLATE	1
	104	42-14-0115	AIR DEFLECTION RING	1
	105	18-07-0121	FIELD	1
	106	16-07-0124	ARMATURE ASSEMBLY	1
	107	22-84-0940	FAN	1
	108	02-04-0063	BALL BEARING	1
	109	02-04-0064	BALL BEARING	1
	110	45-22-0055	BUSHING	1
	111	42-92-0145	BEARING COVER	1
	114	45-30-0210	VINYL SLUG	4
	120	23-94-0041	WIRE ASSEMBLY-BLACK	2
	121	23-94-0042	WIRE ASSEMBLY-BLACK	2
	123	42-70-1100	FIELD CENTERING CLIP	2
	124	23-94-0043	WIRE ASSEMBLY-RED	1
	125	23-94-0044	WIRE ASSEMBLY-RED	1
	136	23-66-0034	SWITCH	1
	201	38-50-0105	SPINDLE	1
	202	45-88-8295	WASHER	1
	203	40-50-8890	VIBRATION SPRING	1
	204	02-04-1830	BALL BEARING	1
	205	44-84-0295	RATCHET (2 PER SET)	1
	206	44-90-0004	SEAL RING	1
	207	44-90-0019	RETAINING RING (INTERNAL)	1
	209	32-75-0050	SPINDLE GEAR	1
	213	44-60-1490	PIN	1
	218	45-88-8345	THRUST WASHER	2
	219	44-10-0035	SHIFT LEVER ASSEMBLY	1
	220	44-60-1480	PIN	1
	221	32-60-0070	REDUCTION GEAR	1
	223	02-02-0105	BALL - 3.4mm	1
	224	02-02-0125	BALL - 3.6mm	1
	225	02-02-0155	BALL - 3.7mm	1
	226	02-02-0115	BALL - 3.8mm	1
	227	02-02-0160	BALL - 3.9mm	1
	228	02-02-0110	BALL - 4.0mm	1

FIG.	PART NO.	DESCRIPTION OF PART	QTY.	
	229	45-88-0315	WASHER	1
	420	31-40-0105	GEARCASE ASSEMBLY	1
	425	28-28-0025	DIAPHRAGM ASSEMBLY	1
	605	43-46-0172	DEPTH GAGE	1
	701	48-66-5185	1/2" CHUCK (INCLUDES #800)	1
		48-66-4040	CHUCK KEY HOLDER (NOT SHOWN)	1
	705	49-15-5300	SIDE HANDLE	1
	800	48-66-2110	CHUCK KEY	1
	801	05-80-0430	6MM LH SCREW	1
	1000	14-46-0030	BOLT KIT (3 BOLTS REQUIRED)	1
	1100	14-38-0145	HOUSING w/BACK HANDLE	1
	1200	14-46-0025	MAINTENANCE SET (NOT SHOWN) (INCLUDES TUBE TYPE 'E' GREASE)	1
	1201	22-16-0065	CARBON BRUSH SET (2 PER PKG)	1
	1202	05-81-0932	SCREW	2
	1203	45-06-0025	SEAL	1
	1204	44-76-0075	CORD PROTECTOR	1
	1206	45-22-0540	RUBBER SLEEVE	1

**FIG. NOTES:**  
106,1100,1206 RUBBER SLEEVE (BEARING CUP) TO BE PLACED INTO MOTOR HOUSING ASSEMBLY PRIOR TO INSTALLING ARMATURE ASSEMBLY.  
111,220 DEMPLE IN BEARING COVER TO FACE PIN.  
223-228 THE CORRECT SIZE BALL MUST BE CHOSEN TO PROPERLY SHIM OUT THE END PLAY IN THE SPINDLE. SPINDLE IS TO HAVE A SMALL AMOUNT OF END PLAY WITHOUT BEING TIGHT.

**MILWAUKEE ELECTRIC TOOL CORPORATION**  
13135 W. LISBON RD., BROOKFIELD, WI 53005  
Drwg. 3

## 5381-20 SERVICE AND GREASE NOTES

### Greasing Instructions

Type "E" Grease, No. 49-08-4122 (Included in Maintenance Set No. 14-46-0025)

Type "U" Grease, No. 49-08-0150

1. Clean ratchets faces (205) completely and apply a light coat of type "U" grease, No. 49-08-0150.
2. Place 1/16 oz. of type "E" grease, No. 49-08-4122, in and around the ratchet cavity of the gearcase (420). Other than the mating faces, lightly coat the ratchets (205) with Type "E" Grease, No. 49-08-4122.
3. Coat spindle shaft (201), pin (213) and ball (223-228) with 1/16 oz. of type "E" grease, No. 49-08-4122.
4. Place 1/8 oz. of type "E" grease, No. 49-08-4122, in gear cavity of diaphragm (425).
5. Grease gear assembly (parts 209, 218, 221, 218 and 229) using 1/4 oz. type "E" grease, No. 49-08-4122.
6. Using type "E" grease, No. 49-08-4122, lightly grease O-ring on Item (219) before assembly to gearcase.

Total amount of type "E" grease: approximately 1/2 oz.

