



SERVICE PARTS LIST

BULLETIN NO.
54-24-0700

SPECIFY CATALOG NO. AND SERIAL NO. WHEN ORDERING PARTS		REVISED BULLETIN	DATE
3/4" HAMMER-DRILL			Apr. '98
CATALOG NO. 5380-02	SERIAL NUMBER 898A	WIRING INSTRUCTION 58-01-1155	

EXAMPLE:



Component Parts (Small #) Are Included
When Ordering The Assembly (Large #).

SEE REVERSE SIDE FOR SERVICE & GREASE NOTES

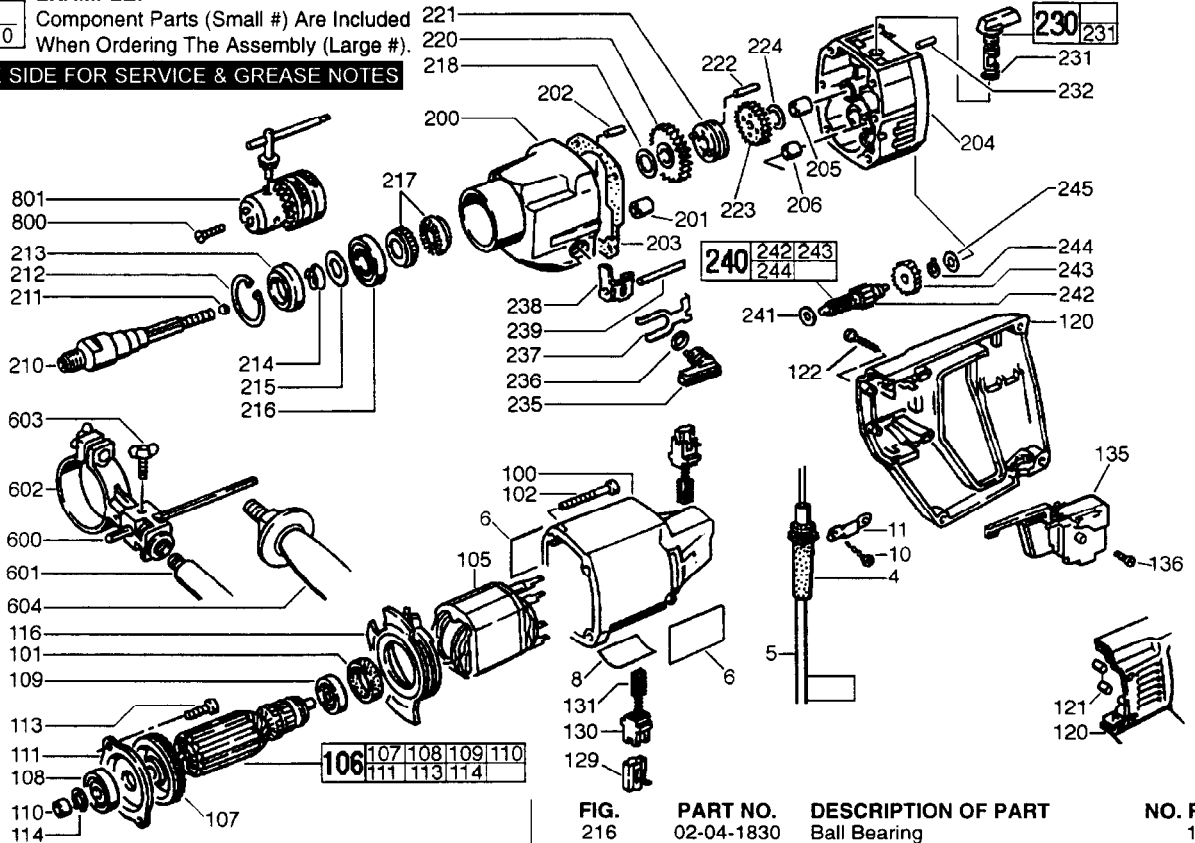


FIG.	PART NO.	DESCRIPTION OF PART	NO. REQ.
4	44-76-0280	Strain Relief	1
5	22-64-0900	Cord Set	1
6	10-07-6210	Product Label	2
8	12-20-0410	Nameplate	1
10	05-81-0930	Screw	2
11	31-17-0240	Cord Clamp	1
100	31-50-1030	Motor Housing	1
101	45-22-0550	Rubber Sleeve	1
102	05-81-0965	Screw	4
105	18-07-0115	Field - Service	1
106	16-07-0115	Armature - Service	1
107	22-84-0795	Armature Fan	1
108	02-04-1825	Ball Bearing	1
109	02-04-1820	Ball Bearing	1
110	42-40-1030	Bushing	1
111	42-92-0005	Bearing Cover	1
113	05-81-0960	Screw	2
114	44-90-4405	Retaining Ring	1
116	31-05-0215	Air Deflector Ring	1
120	31-44-2005	Handle - Set	1
121	45-30-0205	Vinyl Slug	2
122	05-88-9601	Screw	7
129	22-20-0895	Brush Tube	2
130	22-20-0235	Brush Holder	2
131	22-18-0960	Brush (2) Service Kit	1
135	23-66-1680	Switch	1
136	05-81-0940	Screw	2
200	28-14-2300	Gearcase	1
201	02-50-6465	Needle Bearing	1
202	44-60-1515	Pin	2
203	43-44-1040	Gasket	1
204	26-28-1870	Diaphragm	1
205	42-40-1035	Bushing	1
206	02-50-9005	Needle Bearing	1
210	38-50-0045	Spindle	1
211	02-02-0100	Ball	1
212	44-90-0365	Snap Ring (Int.)	1
213	44-90-0004	Seal Ring	1
214	40-50-8890	Spring	1
215	45-88-8295	Washer	1

FIG.	PART NO.	DESCRIPTION OF PART	NO. REQ.
216	02-04-1830	Ball Bearing	1
217	44-84-0295	Ratchet	2
218	45-88-8305	Thrust Washer	1
220	32-75-1210	Spindle Gear	1
221	44-90-4505	Shift Ring	1
222	44-60-1475	Pin	2
223	32-75-1215	Spindle Gear	1
224	45-88-1295	Washer	1
230	44-10-0085	Shift Lever Assy	1
231	34-40-4445	O-Ring	1
232	44-60-1480	Pin	1
235	44-10-0080	Shift Lever Assembly	1
236	34-40-4450	O-Ring	1
237	40-50-8355	Retaining Spring	1
238	42-70-0785	Shifting Clip	1
239	44-60-1470	Pin	1
240	32-60-2625	Reduction Gear	1
241	45-88-8315	Thrust Washer	1
242	36-66-4275	Intermediate Shaft	1
243	32-60-2630	Reduction Gear	1
244	44-90-0370	Snap Ring (Ext.)	1
245	45-88-8325	Thrust Washer	1
600	44-94-0155	Depth Rod	1
601	43-24-0185	Extension	1
602	44-90-4255	Clamping Ring	1
603	05-77-0105	Depth Rod Clamp Screw	1
604	49-15-0315	Side Handle	1
800	05-80-0430	Chuck Retaining Screw	1
801	48-66-5190	Chuck	1
	23-94-1065	Wire	1
	23-94-1070	Wire	1
	23-94-1080	Wire	1
	23-94-1085	Wire	1
	23-94-1090	Wire	1
	23-94-1095	Wire	1
	48-66-2105	Chuck Key	1
	48-66-4040	Chuck Key Holder	1
	10-15-0270	Cord Tag	1

MILWAUKEE ELECTRIC TOOL CORPORATION
13135 W. LISBON RD., BROOKFIELD, WI 53005

5380-02 SERVICE AND GREASE NOTES

Service Notes

1. Replace Item (121) if worn or missing.
2. Grease Items (231) and (236) before assembly to gear case.

Greasing Instructions

Type "E" (49-08-4122)

1. Place 1/8 oz. in first reduction gear cavity in diaphragm.
2. Coat spindle spline (210) and ball (211) with 1/16 oz. of grease.
3. Coat ratchets with 1/16 oz. of grease.
4. Coat shifting clip (238), pin (239) and retaining spring (237) with 1/16 oz. of grease.
5. Grease gear assembly (parts 218-224 and 241-245) with 3/16 oz. of grease.

Total amount of grease: 1/2 oz.

