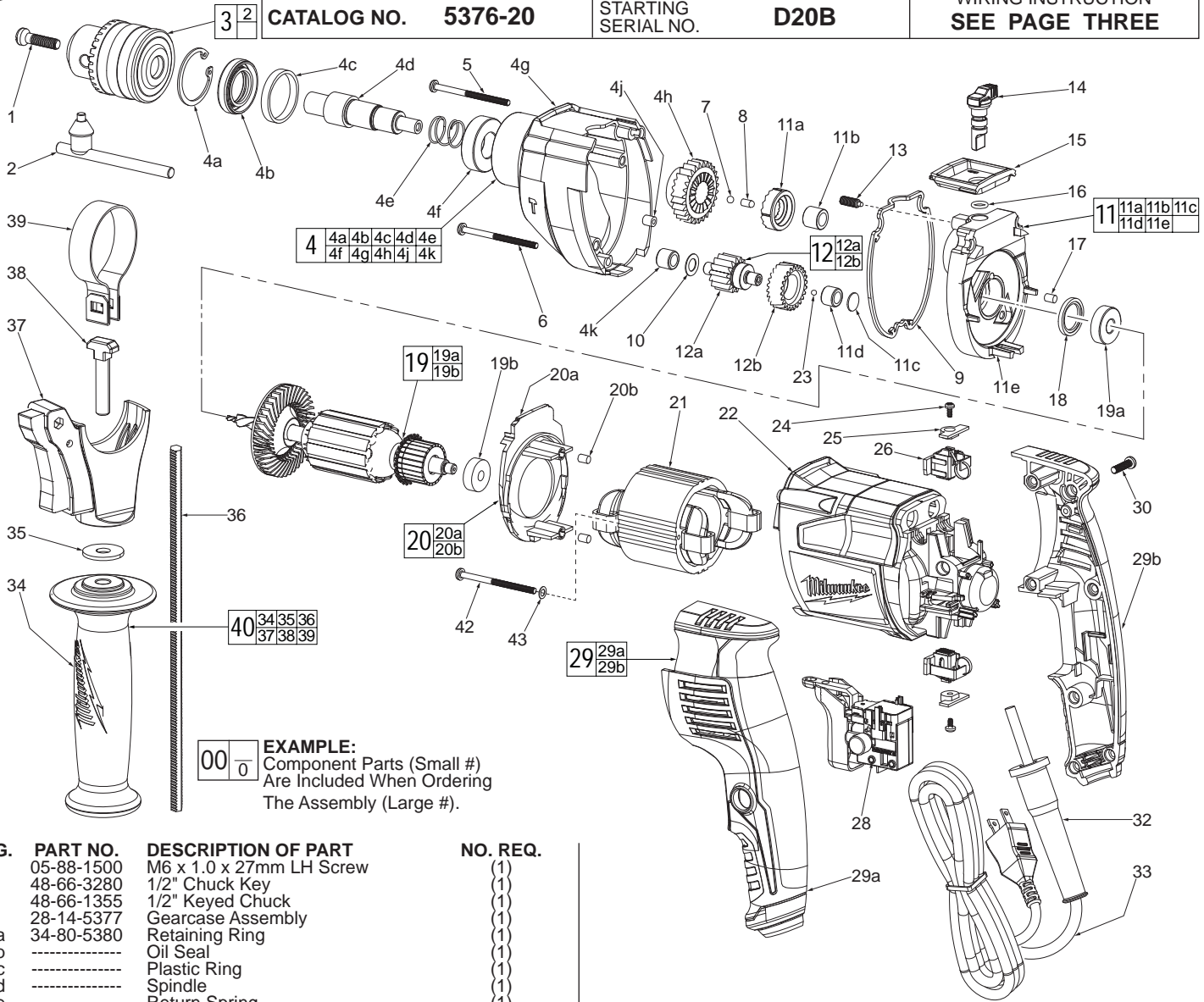




SERVICE PARTS LIST

BULLETIN NO.
54-24-3661

SPECIFY CATALOG NO. AND SERIAL NO. WHEN ORDERING PARTS		REVISED BULLETIN 54-24-3660	DATE Jan. 2014
1/2" SINGLE SPEED HAMMER-DRILL			
CATALOG NO. 5376-20	STARTING SERIAL NO. D20B	WIRING INSTRUCTION SEE PAGE THREE	

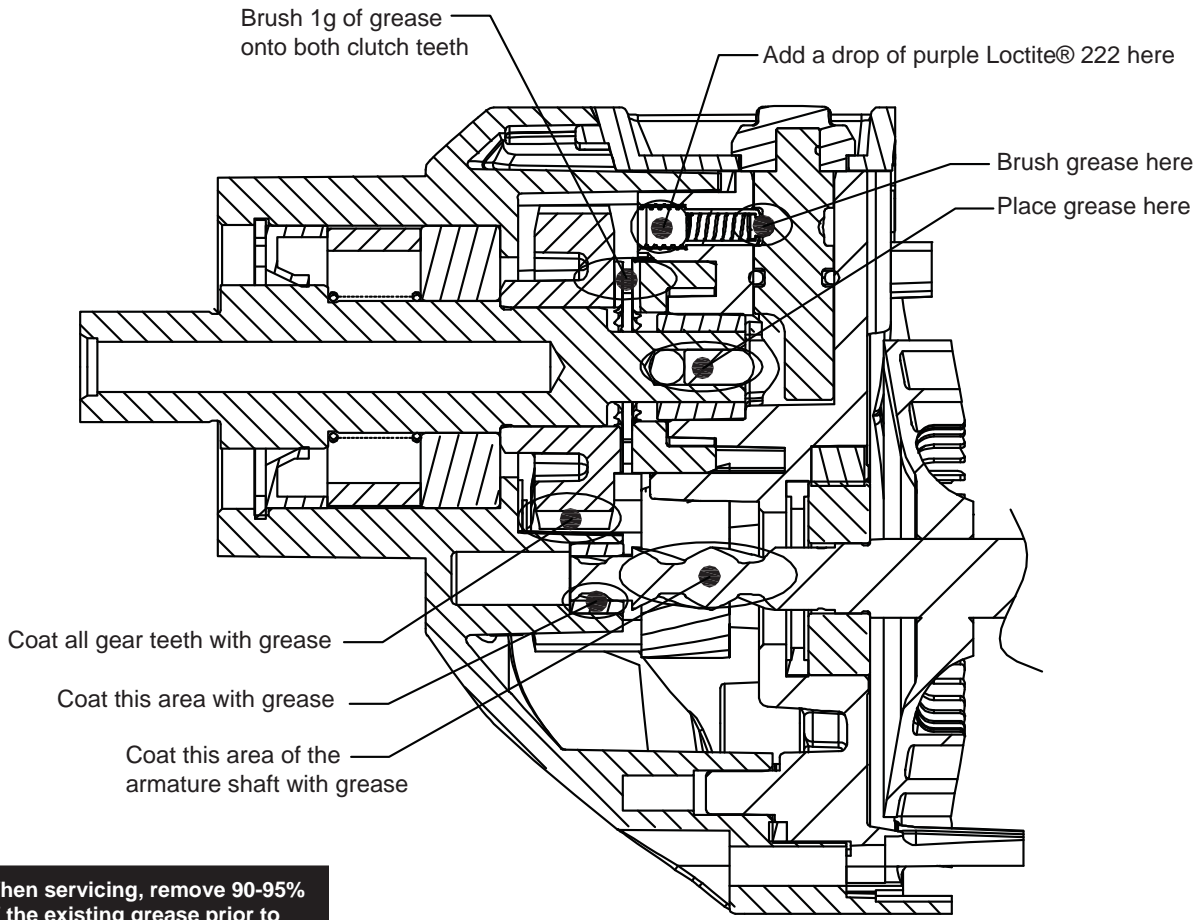


EXAMPLE:
Component Parts (Small #)
Are Included When Ordering
The Assembly (Large #).

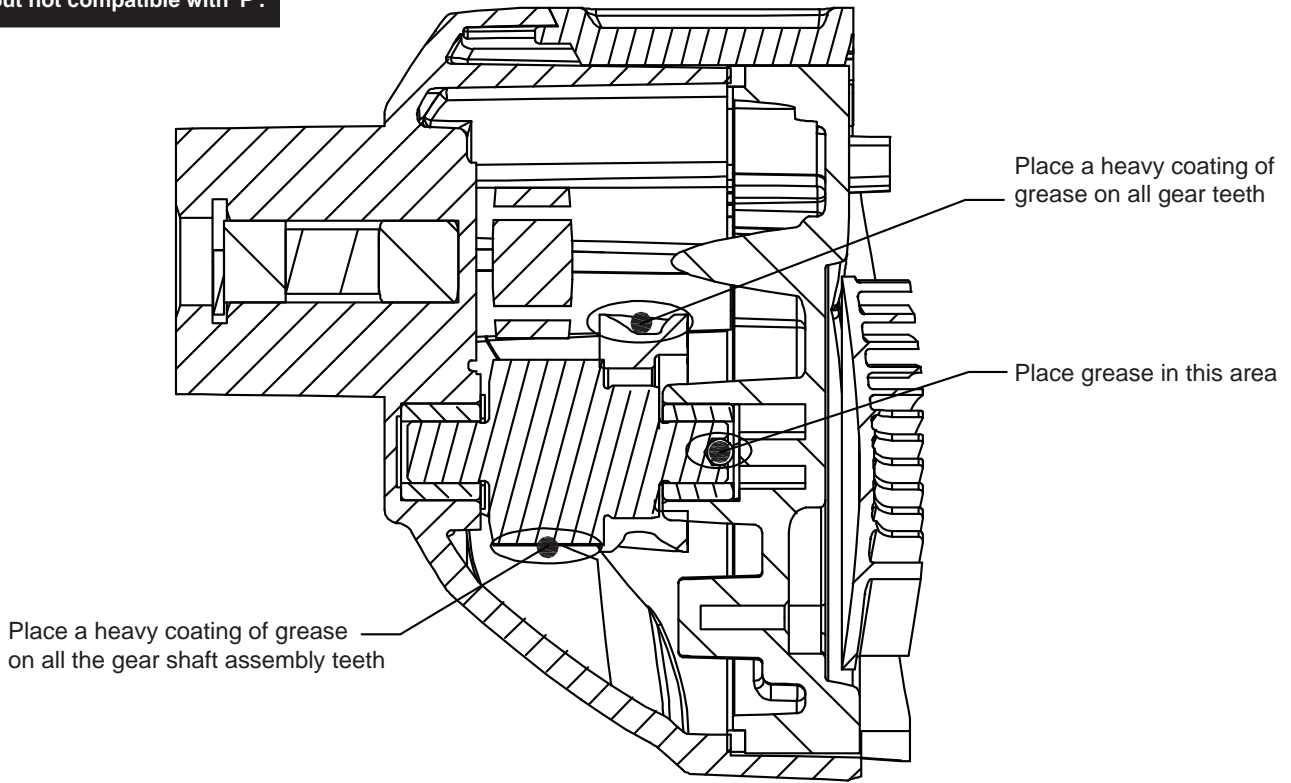
FIG.	PART NO.	DESCRIPTION OF PART	NO. REQ.
1	05-88-1500	M6 x 1.0 x 27mm LH Screw	(1)
2	48-66-3280	1/2" Chuck Key	(1)
3	48-66-1355	1/2" Keyed Chuck	(1)
4	28-14-5377	Gearcase Assembly	(1)
4a	34-80-5380	Retaining Ring	(1)
4b	-----	Oil Seal	(1)
4c	-----	Plastic Ring	(1)
4d	-----	Spindle	(1)
4e	-----	Return Spring	(1)
4f	-----	Ball Bearing	(1)
4g	-----	Gearcase	(1)
4h	-----	2nd Stage Gear with Rotating Clutch	(1)
4j	-----	Bushing	(1)
4k	-----	Needle Bearing	(1)
5	06-81-5380	M4 x 52 Pan Hd. ST T-20 Screw	(2)
6	06-81-5383	M4 x 35 Pan Hd. ST T-20 Screw	(1)
7	02-02-5380	Steel Ball	(1)
8	44-60-5381	Pin	(1)
9	43-44-5376	Rubber Gasket	(1)
10	45-88-5381	Washer	(1)
11	28-28-5376	Diaphragm Assembly	(1)
11a	-----	Fixed Clutch	(1)
11b	-----	Needle Bearing	(1)
11c	-----	Washer	(1)
11d	-----	Needle Bearing	(1)
11e	-----	Diaphragm	(1)
12	14-29-5376	Gear Shaft Assembly	(1)
12a	-----	Gear Shaft	(1)
12b	-----	1st Reduction Gear	(1)
13	44-70-5376	Spring Plunger	(1)
14	44-10-5376	Selector Lever / Impact Pin Assembly	(1)
15	42-92-5376	Selector Plate	(1)
16	34-40-5376	O-Ring	(1)
17	42-34-5380	Rubber Knock	(1)
18	43-44-5377	Rubber Seal Ring	(1)
19	16-07-5376	Armature Assembly	(1)
19a	02-04-5381	Ball Bearing	(1)
19b	02-04-5382	Ball Bearing	(1)
20	14-34-5383	Fan Baffle Assembly	(1)
20a	-----	Baffle	(1)
20b	-----	Rubber Knock	(2)

FIG.	PART NO.	DESCRIPTION OF PART	NO. REQ.
21	18-07-5376	Field	(1)
22	31-50-5378	Motor Housing	(1)
23	02-02-0165	Steel Ball	(1)
24	06-81-5381	M3 x 6mm Pan Hd. Phillips ST Screw	(2)
25	44-66-5379	Pressure Plate	(2)
26	22-22-5380	Self-Stop Carbon Brush Assembly	(1)
27	22-22-5381	Carbon Brush Assembly	(1)
★28	23-66-5381	Switch	(1)
29	14-34-5378	Rear Handle Assembly	(1)
29a	-----	Handle Halve - Left	(1)
29b	-----	Handle Halve - Right	(1)
30	05-88-1200	M4 x 16mm Pan Hd. ST T-20 Screw	(1)
32	44-76-0210	Cord Protector	(1)
★33	22-64-5378	Cord Set	(1)
34	31-05-5383	Side Handle	(1)
35	45-88-5377	Steel Washer	(1)
36	44-94-5381	Depth Gauge	(1)
37	14-34-5374	Side Handle Carrier Assembly	(1)
38	05-81-5376	M8 x 53mm Screw	(1)
39	40-50-5375	Side Handle Clamping Band	(1)
40	14-34-5388	Side Handle Assembly	(1)
41	12-20-5379	Service Nameplate (Not Shown)	(1)
42	06-81-5385	Field Screw	(2)
43	45-88-5400	Field Washer	(2)
-----	48-66-4040	Chuck Key Holder (Not Shown)	(1)
-----	23-94-5381	Red Brush Leadwire Assy. (Not Shown)	(1)
-----	23-94-5379	Black Brush Leadwire Assy. (Not Shown)	(1)

Lubrication Notes:
Use Milwaukee 'P' Grease
Cat. No. 49-08-4250



When servicing, remove 90-95% of the existing grease prior to installing Type 'P' grease. Original grease maybe similar in color but not compatible with 'P'.



WIRING INSTRUCTIONS

TITLE

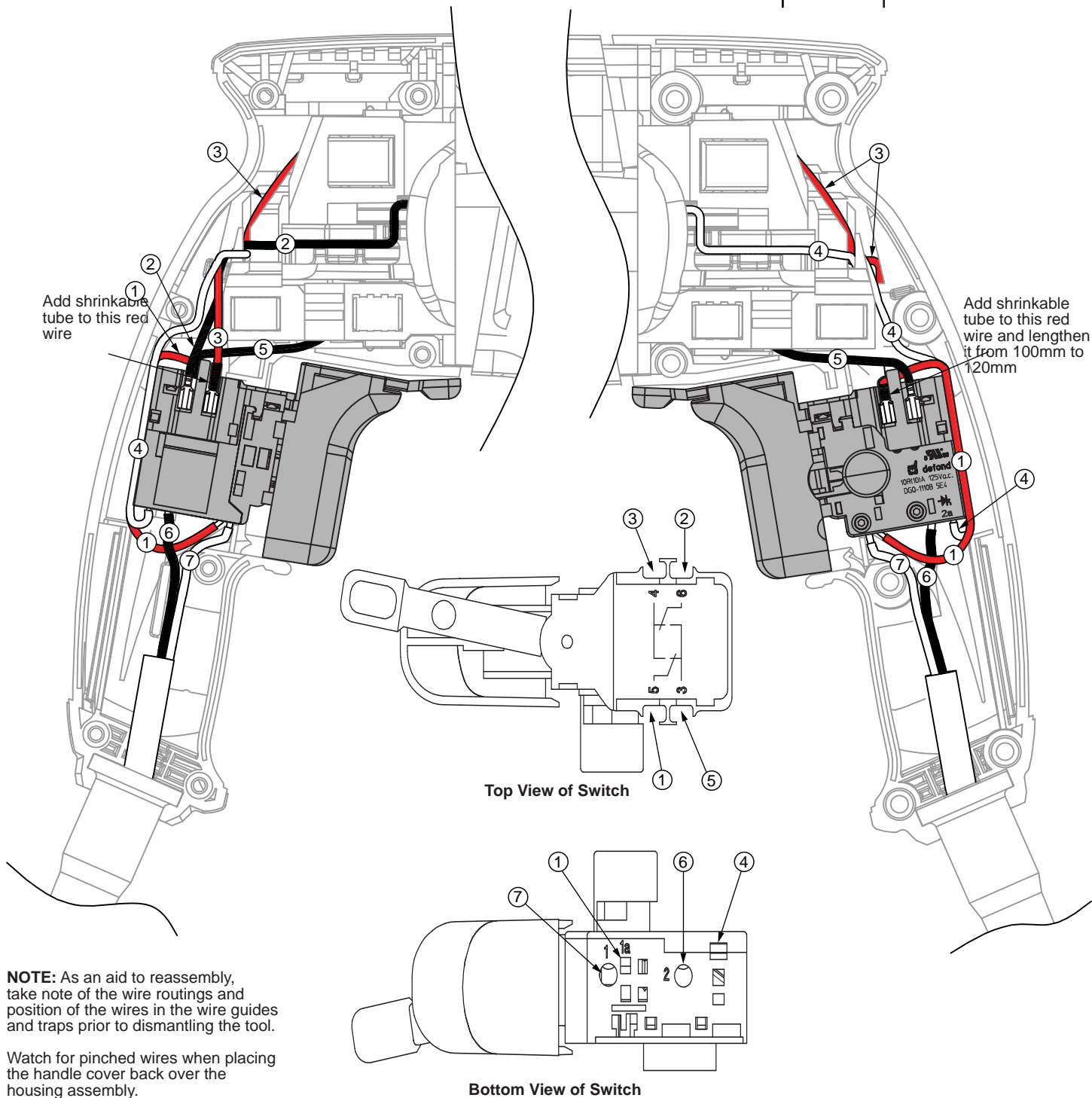
1/2" HAMMER-DRILL

BULLETIN

54-24-3661

MILWAUKEE ELECTRIC TOOL CORP. 13135 WEST LISBON RD. BROOKFIELD, WIS.

DATE
Jan. 2014



WIRING SPECIFICATIONS

Wire No.	Wire Color	Origin or Gauge	Length	Terminals, Connectors and 1 or 2 End Wire Preparation
1	Red	Switch	-----	Connect from '5' on switch to '1a' on switch.
2	Black	Field	-----	Route from Field1 to '6' on switch.
3	Red	23-94-5381	-----	Connect to '4' on switch and route to top brush assembly.
4	White	Field	-----	Route from Field1 to '2a' on switch.
5	Black	23-94-5379	-----	Connect to '3' on switch and route to bottom brush assembly.
6	Black	Cord	-----	Connect to '2' on switch.
7	White	Cord	-----	Connect to '1' on switch.

BULK LEAD WIRE - BULLETIN NO. 58-01-0003