



SERVICE PARTS LIST

BULLETIN NO.
54-24-0120

SPECIFY CATALOG NO. AND SERIAL NO. WHEN ORDERING PARTS		REVISED BULLETIN	DATE FEB '81
1/2" MAGNUM HAMMER DRILL		WIRING INSTRUCTION 58-01-0076	
CATALOG NO. 5374	STARTING SERIAL NO. 666-1001		

4.5 AMPS
0-2500 R.P.M.

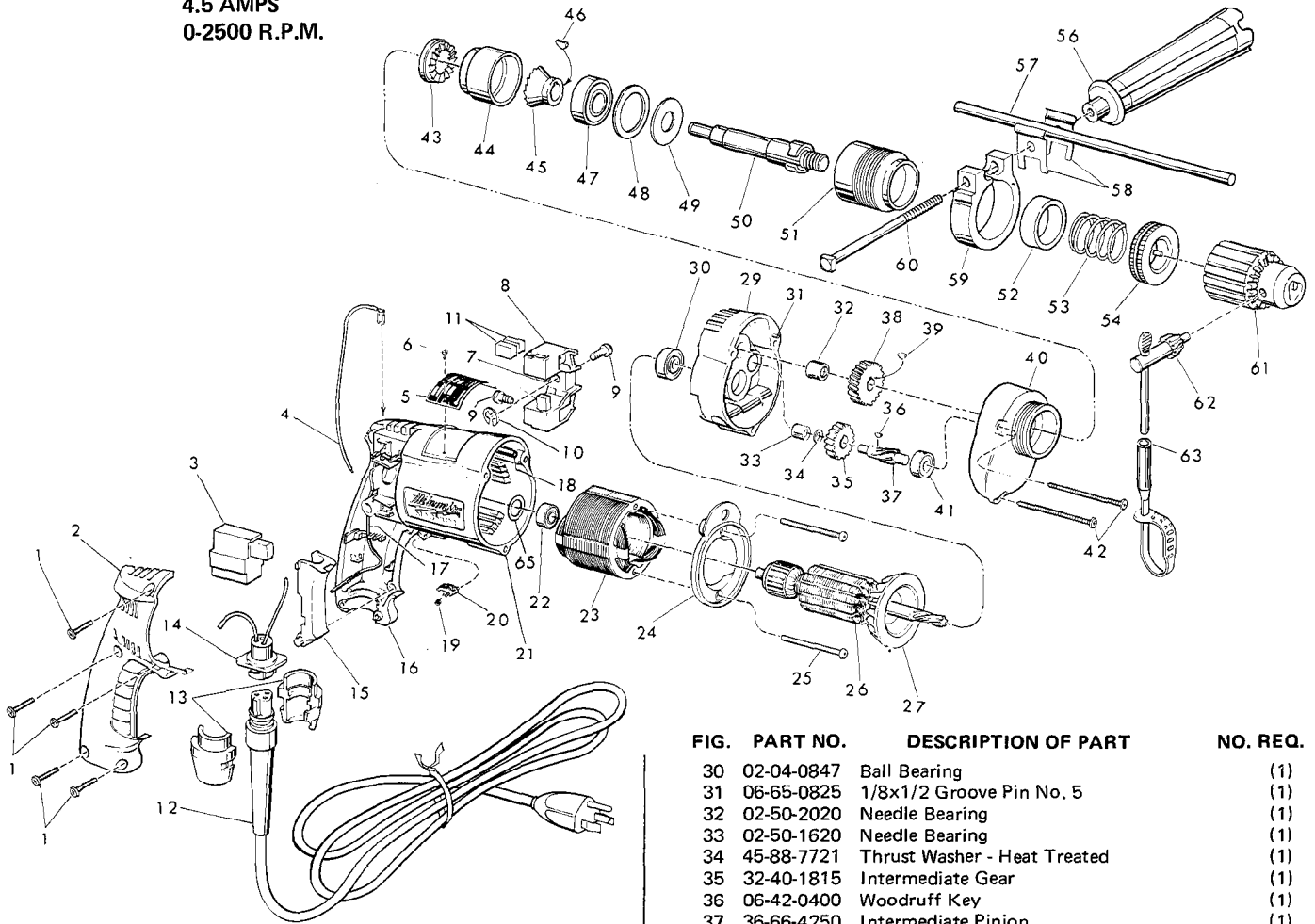


FIG.	PART NO.	DESCRIPTION OF PART	NO. REQ.
1	06-95-0220	8-18x3/4" Pan Hd. Screw	(5)
2	31-15-0101	Handle Cover	(1)
3	23-66-1165	Switch	(1)
4	23-94-9630	7" Lead Assembly	(1)
5	12-99-0220	Nameplate Blank	(1)
6	06-85-0200	Nameplate Screw	(2)
7	22-16-0270	Carbon Brush	(2)
8	22-22-0355	Brush Holder Assy. (Incl. Fig. 9 thru 11)	(1)
9	31-75-0010	Brush Holder Screw	(2)
10	34-60-0500	1/4" External Retaining Ring	(1)
11	22-16-0270	Carbon Brush (Spares)	(2)
12	48-76-3008	8 Foot Quick-Lok Cord Set (Incl. Fig. No. 13)	(1)
13	44-40-0440	Cord Nut	(2)
14	22-56-0302	Pin Housing Assembly	(1)
15	45-72-0080	Trigger	(1)
16	14-38-0345	Motor Housing Assy. (Incl. Fig. Nos. 17 & 18)	(1)
17	23-94-9686	Ground Wire Assembly	(1)
18	44-60-0570	Grounding Pin	(1)
19	40-50-0085	Lock Button Spring	(1)
20	42-42-0150	Lock Button	(1)
21	43-44-0575	Gasket (Not Shown)	(1)
22	02-04-0645	Ball Bearing	(1)
23	18-10-0045	120 Volt Field	(1)
24	31-05-0065	Baffle	(1)
25	06-95-0140	No. 7x1-7/8" Pan Hd. Screw	(2)
26	16-10-0260	120V Armature (Includes Fig. No. 27)	(1)
27	22-84-0650	Fan Assembly	(1)
28	14-13-0355	Diaphragm Assy. (Incl. Fig. Nos. 29 thru 33)	(1)
29	28-28-1575	Diaphragm	(1)

FIG.	PART NO.	DESCRIPTION OF PART	NO. REQ.
30	02-04-0847	Ball Bearing	(1)
31	06-65-0825	1/8x1/2 Groove Pin No. 5	(1)
32	02-50-2020	Needle Bearing	(1)
33	02-50-1620	Needle Bearing	(1)
34	45-88-7721	Thrust Washer - Heat Treated	(1)
35	32-40-1815	Intermediate Gear	(1)
36	06-42-0400	Woodruff Key	(1)
37	36-66-4250	Intermediate Pinion	(1)
38	32-75-2900	Spindle Gear	(1)
39	06-42-1200	Woodruff Key	(1)
40	28-14-1428	Gear Case	(1)
41	02-04-0640	Ball Bearing	(1)
42	06-95-0150	No. 7x2-3/16" Lg. Pan Hd. Screw	(3)
43	44-84-0120	Fixed Ratchet	(1)
44	42-52-0250	Bearing Housing	(1)
45	44-84-0110	Rotating Ratchet	(1)
46	06-42-0800	Woodruff Key	(1)
47	02-04-1560	Ball Bearing	(1)
48	45-88-7350	Bearing Retainer Washer	(1)
49	45-88-7360	Spring Support Washer	(1)
50	38-50-5240	Spindle	(1)
51	45-22-0405	Sleeve	(1)
52	45-88-7375	Felt Washer	(1)
53	40-50-4950	Spring	(1)
54	42-76-0200	Locking Collar	(1)
55	14-34-0250	Side Handle Assy. (Incl. Fig. Nos. 56 thru 60)	(1)
56	43-62-0700	Side Handle	(1)
57	44-94-0161	Depth Rod	(1)
58	42-68-0390	Depth Gauge Clamp	(2)
59	28-82-0150	Handle Ring	(1)
60	42-32-0160	5/16-18 Square Hd. Bolt	(1)
61	48-66-1280	1/2" Chuck (Includes Fig. No. 62)	(1)
62	48-66-3280	Chuck Key	(1)
63	48-66-4040	Key Holder	(1)
64	10-98-5945	Caution Label (Not Shown)	(1)
65	45-88-7800	Gasket Washer	(1)

MILWAUKEE ELECTRIC TOOL CORPORATION
13135 W. LISBON RD., BROOKFIELD, WIS. 53005