



SERVICE PARTS LIST

BULLETIN NO.
54-24-0116

SPECIFY CATALOG NO. AND SERIAL NO. WHEN ORDERING PARTS		REVISED BULLETIN	DATE
MAGNUM TWO-SPEED HAMMER DRILL		54-24-0115	Nov. '94
CATALOG NO. 5370-1	STARTING SERIAL NO. 672-282447	WIRING INSTRUCTION 58-01-0077	

EXAMPLE:
Component Parts (Small #) Are Included
When Ordering The Assembly (Large #).

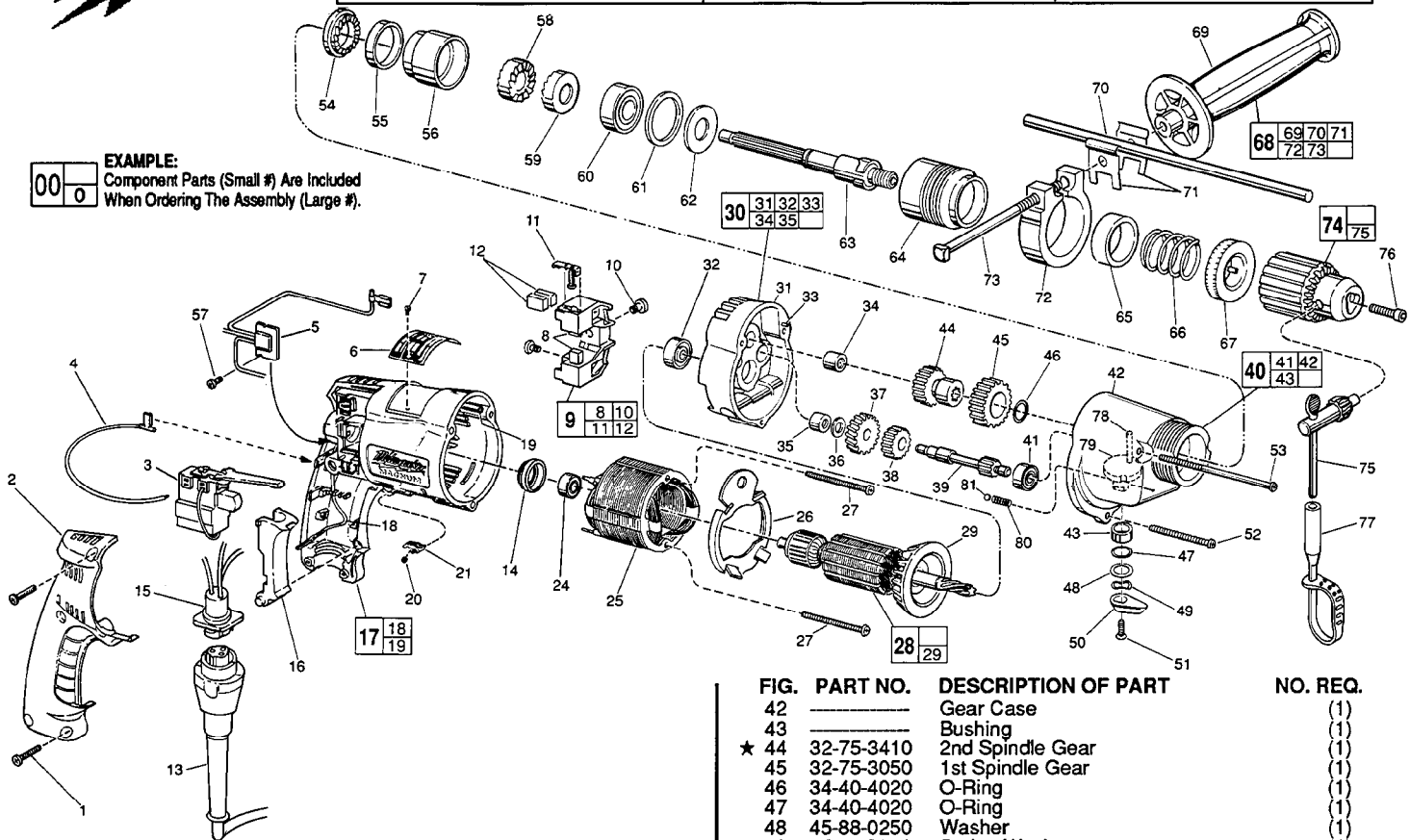


FIG.	PART NO.	DESCRIPTION OF PART	NO. REQ.
	1	06-82-7266 7-18 x 11/16" Plastite T-20	(5)
	2	31-15-0401 Handle Cover	(1)
	3	23-66-1665 Trigger Speed Control Rev. Switch	(1)
	4	23-94-6245 2-1/4" Lead Assembly	(1)
	5	14-20-0250 Remote Electronic Assembly	(1)
	6	12-99-0225 Nameplate Blank	(1)
	7	06-85-0200 Nameplate Screw	(2)
	8	22-16-0300 Carbon Brush	(2)
	9	22-22-0356 Brush Holder Assembly	(1)
	10	31-75-0040 Brush Holder Screw	(2)
	11	22-20-0355 Brush Spring Assembly	(2)
	12	22-16-0300 Carbon Brush (Spares)	(2)
	13	48-76-4008 8 Foot Quik-Lok Cord Set	(1)
	14	22-72-0100 Bearing Cup	(1)
	15	22-56-0630 Pin Housing Assembly	(1)
	16	45-72-0080 Trigger	(1)
	17	14-38-0540 Motor Housing Assembly	(1)
	18	23-94-9960 Ground Wire Assembly	(1)
	19	44-60-1290 Grounding Pin	(1)
	20	40-50-0085 Lock Button Spring	(1)
	21	42-42-0150 Lock Button	(1)
	24	02-04-0645 Ball Bearing	(1)
	25	18-11-0075 120 Volt Field	(1)
	26	42-14-0345 Baffle	(1)
	27	06-82-7393 7-18 x 2" Pan Hd. Plastite T-20	(2)
	28	16-10-0500 120 Volt Armature	(1)
	29	22-84-0650 Fan Assembly	(1)
★	30	14-13-0465 Diaphragm Assembly	(1)
	31	Diaphragm	(1)
	32	02-04-0847 Ball Bearing	(1)
	33	06-65-0825 1/8 x 1/2" Groove Pin	(1)
	34	02-50-2020 Needle Bearing	(1)
	35	02-50-1620 Needle Bearing	(1)
	36	45-88-7721 Thrust Washer (Heat Treated)	(1)
	37	32-40-1815 Intermediate Gear	(1)
★	38	32-44-1390 2nd Intermediate Pinion	(1)
	39	36-66-1330 1st Intermediate Pinion	(1)
	40	14-30-0381 Gear Case Assembly	(1)
	41	02-04-0640 Ball Bearing	(1)

FIG.	PART NO.	DESCRIPTION OF PART	NO. REQ.
	42	Gear Case	(1)
	43	Bushing	(1)
★	44	32-75-3410 2nd Spindle Gear	(1)
	45	32-75-3050 1st Spindle Gear	(1)
	46	34-40-4020 O-Ring	(1)
	47	34-40-4020 O-Ring	(1)
	48	45-88-0250 Washer	(1)
	49	45-88-7780 Spring Washer	(1)
	50	43-98-0220 Shift Knob	(1)
	51	06-81-2502 6-32 x 3/8" Flat Hd. Phil. Screw	(1)
	52	06-82-7393 7-18 x 2" Pan Hd. Screw T-20	(1)
	53	06-82-7524 7-18 x 3-1/2" Pan Hd. Screw T-20	(2)
	54	44-84-0120 Fixed Ratchet	(1)
	55	45-36-1120 Bearing Housing Spacer	(1)
	56	42-52-0250 Bearing Housing	(1)
	57	06-82-7212 4-20 x 1/4" Pan Hd. Plastite T-10	(1)
	58	44-84-0150 Intermediate Ratchet	(1)
	59	44-84-0145 Rotating Ratchet	(1)
	60	02-04-1536 Ball Bearing	(1)
	61	45-88-7350 Bearing Retainer Washer	(1)
	62	45-88-7365 Spring Support Washer	(1)
	63	38-50-5295 Spindle	(1)
	64	45-22-0405 Sleeve (Left Hand Thread)	(1)
	65	45-88-7375 Felt Washer	(1)
	66	40-50-4950 Spring	(1)
	67	42-76-0200 Locking Collar	(1)
	68	14-34-0250 Side Handle Assembly	(1)
	69	43-62-0865 Side Handle	(1)
	70	44-94-0161 Depth Rod	(1)
	71	42-68-0390 Depth Gauge Clamp	(2)
	72	25-82-0140 Clamping Collar	(1)
	73	42-32-0161 5/16 - 18 x 3-1/2" Square Hd. Bolt	(1)
	74	48-66-1365 1/2" Reversing Chuck	(1)
	75	48-66-3280 Chuck Key	(1)
	76	06-75-3150 1/4-20 x 1" Socket Hd. Screw - L.H.Thread	(1)
	77	48-66-4040 Key Holder	(1)
	78	44-60-0615 Dowel Pin	(1)
	79	42-50-0105 Shift Cam	(1)
	80	40-50-7760 Compression Spring	(1)
	81	02-02-0120 1/8" Steel Ball	(1)
		10-98-6070 Caution Label	(1)
		10-98-5986 Caution Label (Omit for Canadian Tools)	(1)

FIG.	PART NO.	DESCRIPTION OF PART	NO. REQ.
	42	Gear Case	(1)
	43	Bushing	(1)
★	44	32-75-3410 2nd Spindle Gear	(1)
	45	32-75-3050 1st Spindle Gear	(1)
	46	34-40-4020 O-Ring	(1)
	47	34-40-4020 O-Ring	(1)
	48	45-88-0250 Washer	(1)
	49	45-88-7780 Spring Washer	(1)
	50	43-98-0220 Shift Knob	(1)
	51	06-81-2502 6-32 x 3/8" Flat Hd. Phil. Screw	(1)
	52	06-82-7393 7-18 x 2" Pan Hd. Screw T-20	(1)
	53	06-82-7524 7-18 x 3-1/2" Pan Hd. Screw T-20	(2)
	54	44-84-0120 Fixed Ratchet	(1)
	55	45-36-1120 Bearing Housing Spacer	(1)
	56	42-52-0250 Bearing Housing	(1)
	57	06-82-7212 4-20 x 1/4" Pan Hd. Plastite T-10	(1)
	58	44-84-0150 Intermediate Ratchet	(1)
	59	44-84-0145 Rotating Ratchet	(1)
	60	02-04-1536 Ball Bearing	(1)
	61	45-88-7350 Bearing Retainer Washer	(1)
	62	45-88-7365 Spring Support Washer	(1)
	63	38-50-5295 Spindle	(1)
	64	45-22-0405 Sleeve (Left Hand Thread)	(1)
	65	45-88-7375 Felt Washer	(1)
	66	40-50-4950 Spring	(1)
	67	42-76-0200 Locking Collar	(1)
	68	14-34-0250 Side Handle Assembly	(1)
	69	43-62-0865 Side Handle	(1)
	70	44-94-0161 Depth Rod	(1)
	71	42-68-0390 Depth Gauge Clamp	(2)
	72	25-82-0140 Clamping Collar	(1)
	73	42-32-0161 5/16 - 18 x 3-1/2" Square Hd. Bolt	(1)
	74	48-66-1365 1/2" Reversing Chuck	(1)
	75	48-66-3280 Chuck Key	(1)
	76	06-75-3150 1/4-20 x 1" Socket Hd. Screw - L.H.Thread	(1)
	77	48-66-4040 Key Holder	(1)
	78	44-60-0615 Dowel Pin	(1)
	79	42-50-0105 Shift Cam	(1)
	80	40-50-7760 Compression Spring	(1)
	81	02-02-0120 1/8" Steel Ball	(1)
		10-98-6070 Caution Label	(1)
		10-98-5986 Caution Label (Omit for Canadian Tools)	(1)

FIG. LUBRICATION
40 2 Oz. Type "E" Grease, No. 49-08-4122.
54,58,59 Apply Thin Coat Type "U" Grease, No. 49-08-0150,
To Ratchet Teeth

MILWAUKEE ELECTRIC TOOL CORPORATION
13135 W. LISBON RD., BROOKFIELD, WI 53005