

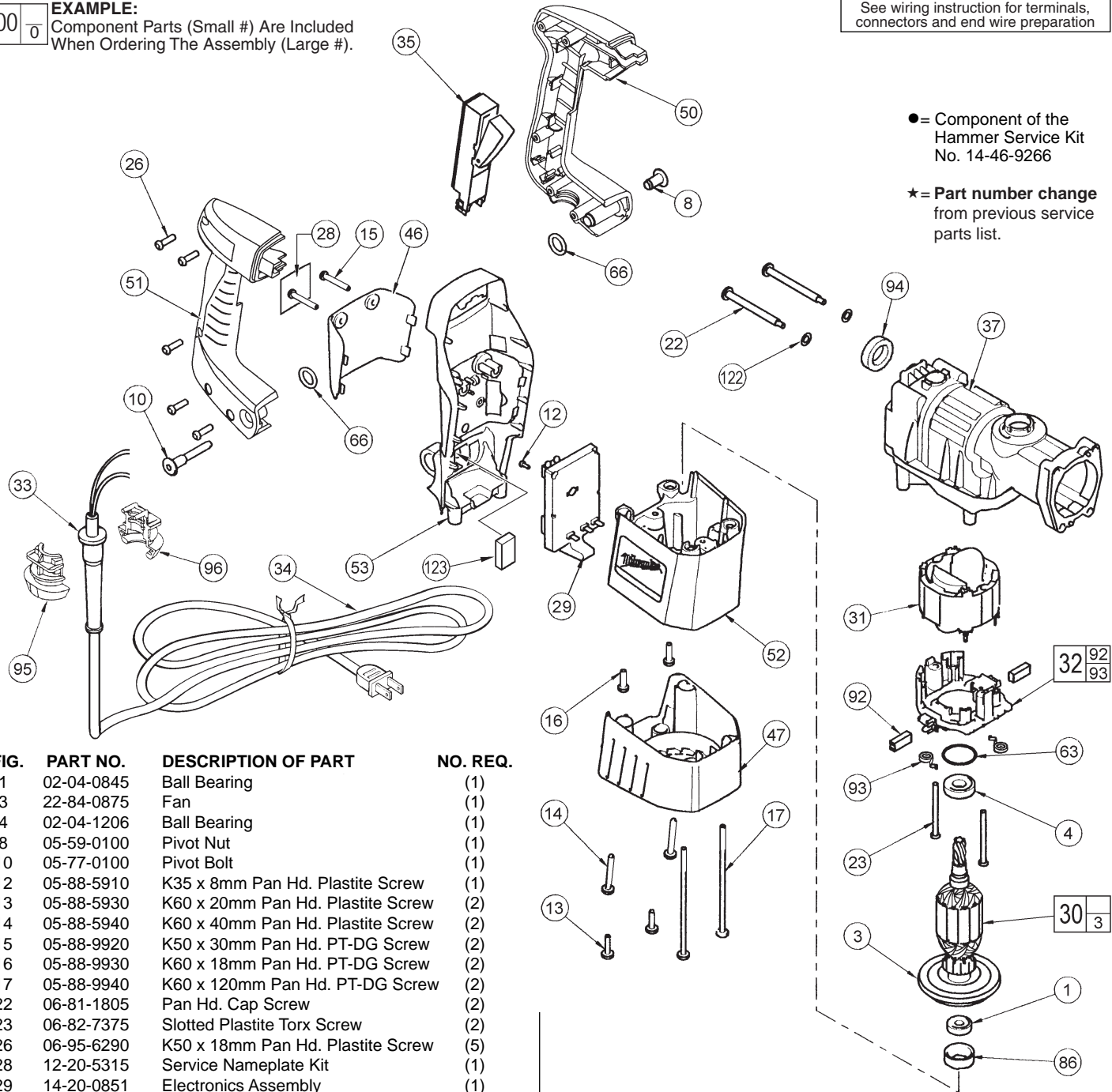


# SERVICE PARTS LIST

SPECIFY CATALOG NO. AND SERIAL NO. WHEN ORDERING PARTS	
<b>1-1/2" (40mm) ROTARY HAMMER</b>	
<b>CATALOG NO.</b> 5314-21	<b>STARTING SERIAL NO.</b> 874C

REVISED BULLETIN 54-24-5051	DATE Aug. 2006
WIRING INSTRUCTION <b>58-01-0035</b>	
See wiring instruction for terminals, connectors and end wire preparation	

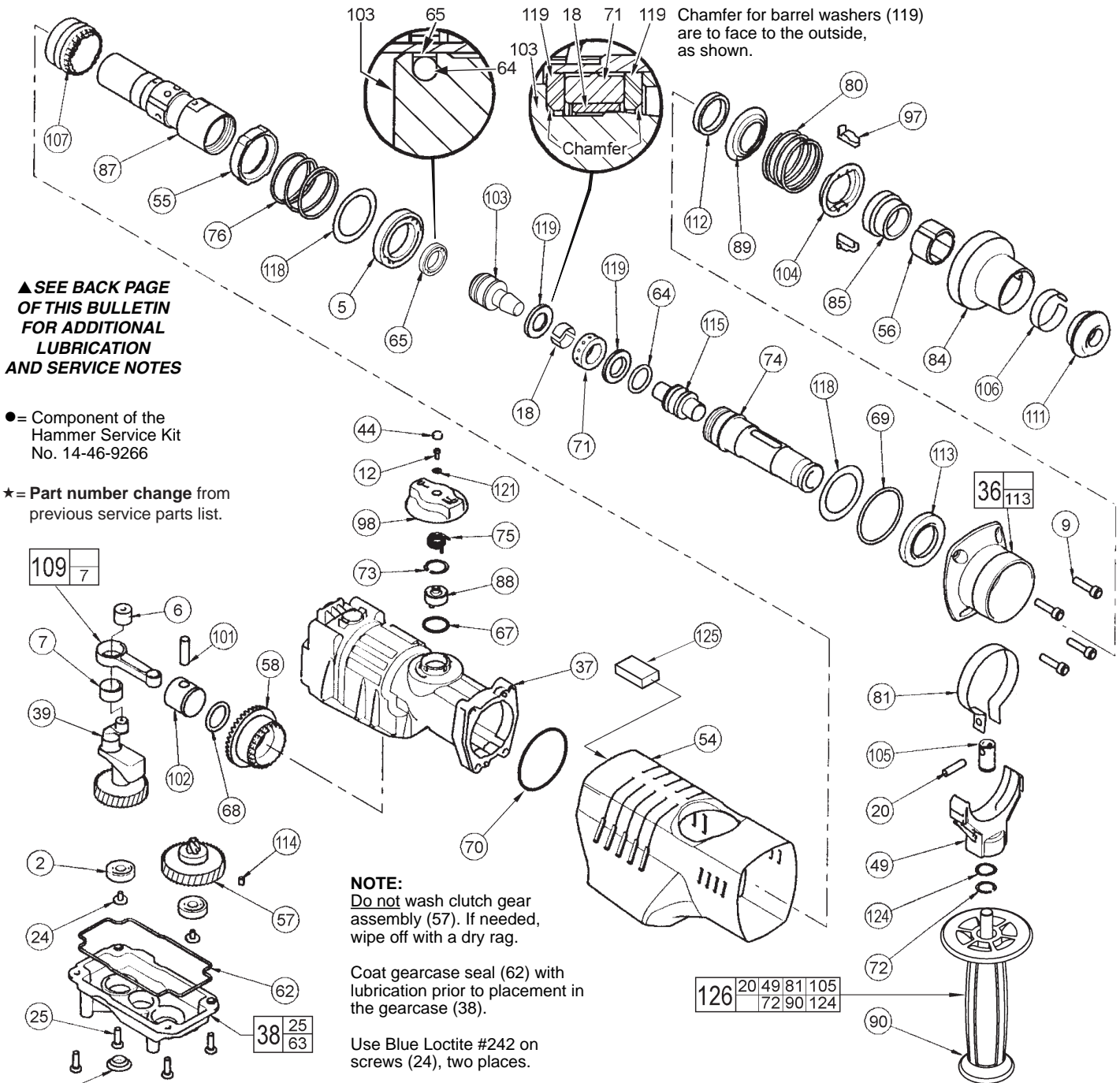
**EXAMPLE:**  
 Component Parts (Small #) Are Included When Ordering The Assembly (Large #).



● = Component of the Hammer Service Kit No. 14-46-9266  
 ★ = Part number change from previous service parts list.

FIG.	PART NO.	DESCRIPTION OF PART	NO. REQ.
	1	02-04-0845 Ball Bearing	(1)
	3	22-84-0875 Fan	(1)
★	4	02-04-1206 Ball Bearing	(1)
	8	05-59-0100 Pivot Nut	(1)
	10	05-77-0100 Pivot Bolt	(1)
	12	05-88-5910 K35 x 8mm Pan Hd. Plastite Screw	(1)
	13	05-88-5930 K60 x 20mm Pan Hd. Plastite Screw	(2)
	14	05-88-5940 K60 x 40mm Pan Hd. Plastite Screw	(2)
	15	05-88-9920 K50 x 30mm Pan Hd. PT-DG Screw	(2)
	16	05-88-9930 K60 x 18mm Pan Hd. PT-DG Screw	(2)
	17	05-88-9940 K60 x 120mm Pan Hd. PT-DG Screw	(2)
	22	06-81-1805 Pan Hd. Cap Screw	(2)
	23	06-82-7375 Slotted Plastite Torx Screw	(2)
	26	06-95-6290 K50 x 18mm Pan Hd. Plastite Screw	(5)
	28	12-20-5315 Service Nameplate Kit	(1)
★	29	14-20-0851 Electronics Assembly	(1)
★	30	16-30-0642 Armature Kit	(1)
	31	18-30-1040 Field	(1)
★	32	22-22-1531 Brush Card Assembly	(1)
	33	44-76-0210 Cord Protector	(1)
	34	22-64-0145 Cord Set	(1)
	35	23-66-2195 Switch	(1)
	37	28-14-2541 Crankcase Assembly	(1)
	46	31-15-0623 Module Cover	(1)
	47	31-15-2053 Motor Cover	(1)
	50	31-44-2231 Left Handle Half	(1)
	51	31-44-2241 Right Handle Half	(1)
	52	31-50-5101 Motor Housing	(1)
	53	31-55-0281 Rear Shroud	(1)
★	63	34-40-4215 O-Ring	(1)
	66	34-40-4490 O-Ring	(2)
	86	42-96-0125 ● Bearing Cup	(1)

FIG.	PART NO.	DESCRIPTION OF PART	NO. REQ.
★	92	22-18-1353 ● Carbon Brush Kit (Includes 2 Brushes)	(1)
	93	40-50-2220 Brush Spring	(2)
	94	44-34-0300 Rubber Handle Mount	(1)
	95	31-17-0270 Cord Clamp	(1)
	96	31-17-0260 Cord Clamp	(1)
	122	45-88-8555 Rubber Washer	(2)
	123	45-06-0535 Handle Seal	(1)



▲ SEE BACK PAGE OF THIS BULLETIN FOR ADDITIONAL LUBRICATION AND SERVICE NOTES

**FASTENER TORQUE SPECIFICATIONS (IN.LBS.)**

FIG. NO.	SEATING TORQUE	
	MINIMUM	MAXIMUM
9	120	140
10	20	25
12	4	8
13	20	25
14	20	25
15	20	25
16	50	55
17	30	35
22	30	35
23	15	20
24	20	25
25	50	55
26	15	20
74	130 FT. LBS.	200 FT. LBS.
87	130 FT. LBS.	200 FT. LBS.
Switch Screws	4	6

**SERVICE GREASE-**

● "S2" Grease, No. 49-08-5265 7 oz. tube

● 14-46-9266 HAMMER SERVICE KIT

THIS KIT CONTAINS:

- |   |            |                        |
|---|------------|------------------------|
| 2 | 31-12-0040 | Cap Plug               |
| 1 | 34-40-0240 | Gearcase Seal          |
| 2 | 34-40-4350 | O-Ring                 |
| 1 | 34-40-4475 | Cap Seal               |
| 1 | 34-40-4215 | O-Ring                 |
| 1 | 34-40-4510 | O-Ring                 |
| 1 | 34-40-4530 | O-Ring                 |
| 1 | 34-40-4570 | Damping Washer         |
| 1 | 42-96-0125 | Bearing Cup            |
| 2 | 45-22-0680 | Split Sleeve           |
| 1 | 22-18-1353 | Carbon Brush Kit       |
| 1 | 49-08-5265 | "S2" Grease, 7oz. Tube |

● 22-18-1353 CARBON BRUSH SERVICE KIT

THIS KIT CONTAINS:

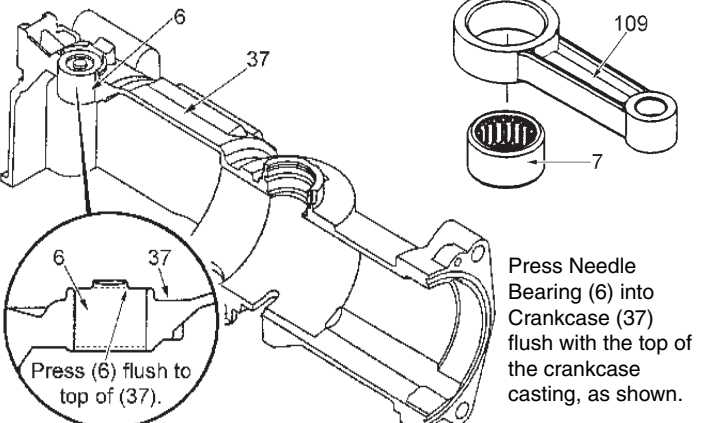
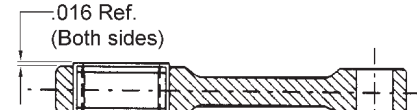
- |   |       |              |
|---|-------|--------------|
| 2 | ----- | Carbon Brush |
|---|-------|--------------|

FIG.	PART NO.	DESCRIPTION OF PART	NO. REQ.
2	02-04-0911	Ball Bearing	(2)
5	02-08-0640	Ball Bearing	(1)
★ 6	02-50-2755	Needle Bearing	(1)
7	02-50-4020	Needle Bearing	(1)
9	05-74-0625	M6 Socket Head Cap Screw	(4)
12	05-88-5910	K35 x 8mm Pan Hd. Plastite Screw	(1)
18	45-22-0680	● Split Sleeve	(2)
20	06-65-1660	Dowel Pin	(1)
24	06-82-8842	8-32 x 3/8" Pan Hd. Slit. Tapt. Sems T-20	(2)
25	05-88-9910	K50 x 22mm PT-DG Screw	(4)
36	14-52-0030	SDS-Max Nose Service Assembly	(1)
37	28-14-2541	Crankcase Assembly	(1)
38	14-46-2565	Gearcase Service Kit	(1)
★ 39	14-09-0161	Crankshaft Assembly	(1)
43	31-12-0040	● 5/8 Cap Plug	(2)
44	31-12-0185	Screw Cap	(1)
49	31-44-2000	Side Handle Housing	(1)
54	31-55-0301	Main Shroud	(1)
55	31-58-0150	Locking Ring	(1)
56	31-86-0100	Spacer	(1)
★ 57	14-08-0211	Clutch Gear Assembly	(1)
58	32-30-0060	Drive Gear	(1)
62	34-40-0240	● Gearcase Seal	(1)
64	34-40-4350	● O-Ring	(2)
65	34-40-4475	● Capseal	(1)
67	34-40-4500	O-Ring	(1)
68	34-40-4510	● O-Ring	(1)
69	34-40-4520	O-Ring	(1)
70	34-40-4530	● O-Ring	(1)
71	34-40-4570	● Damping Washer	(1)
72	34-60-2580	External Retaining Ring	(1)
73	34-80-5010	Retaining Ring	(1)
74	38-50-6250	Spindle	(1)
75	40-50-0370	Shift Spring	(1)
76	40-50-0380	Compression Spring	(1)
80	40-50-8870	Key Spring	(1)
81	42-16-0125	Side Handle Band	(1)
84	42-76-0710	Chuck Collar	(1)
85	42-76-0715	Collar	(1)
87	42-98-0260	Barrel	(1)
88	14-14-0170	Shift Disk Assembly	(1)
89	43-34-0440	Spring Flange	(1)
90	43-62-0843	Side Handle Assembly	(1)
97	43-96-0220	Keys	(2)
98	14-34-0180	Shift Knob Assembly	(1)
101	44-60-1710	Wrist Pin	(1)
102	44-62-0230	Piston	(1)
103	44-82-0220	Ram	(1)
104	44-86-0610	Key Retaining Ring	(1)
105	44-86-0620	Band Retainer	(1)
106	44-90-0005	Seal Retaining Ring	(1)
107	44-90-0175	Shift Ring	(1)
109	44-94-0395	Connecting Rod Assembly	(1)
111	45-06-0555	Dust Seal	(1)
112	45-06-0685	Felt Seal	(1)
113	-----	Spindle Seal	(1)
114	45-30-0060	Retaining Slug	(1)
115	45-56-2640	SDS-Max Striker	(1)
118	45-88-1565	Washer	(2)
119	45-88-4005	Barrel Washer	(2)
121	45-88-7170	Washer	(1)
124	45-88-8730	Wave Washer	(1)
★ 125	44-52-0041	Breather Pad	(1)
126	14-34-0590	Side Handle Assembly Kit	(1)

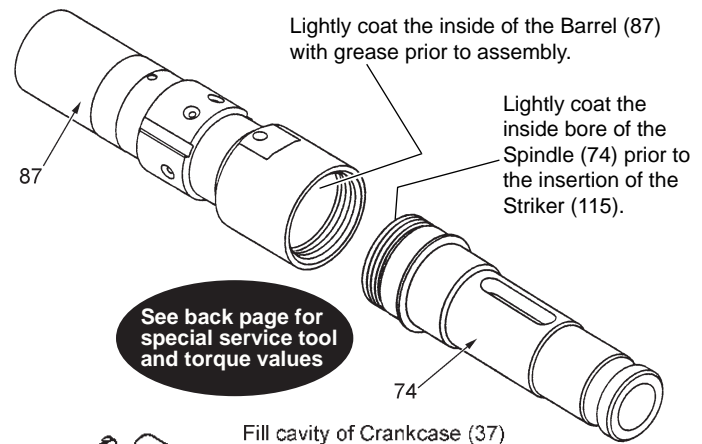
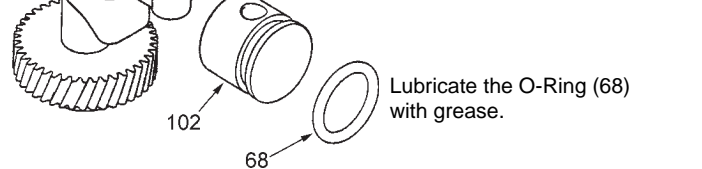
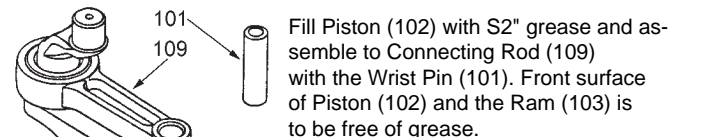
**NOTE:** Check the clutch torque. Clutch must slip at 40 to 50 ft.lbs. at the spindle, checked clockwise as viewed from the front of the tool.

**▲ SEE BACK PAGE OF THIS BULLETIN FOR ADDITIONAL LUBRICATION AND SERVICE NOTES**

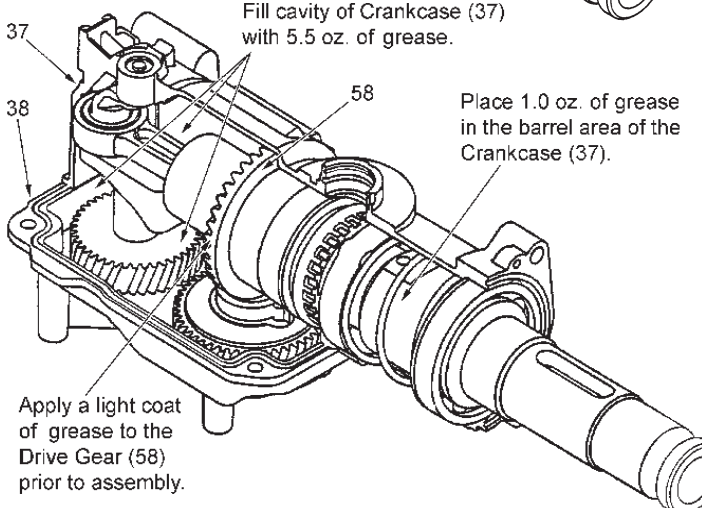
Press Needle Bearing (7) in Connecting Rod (109) so that the same amount sticks out on both sides of the Rod.



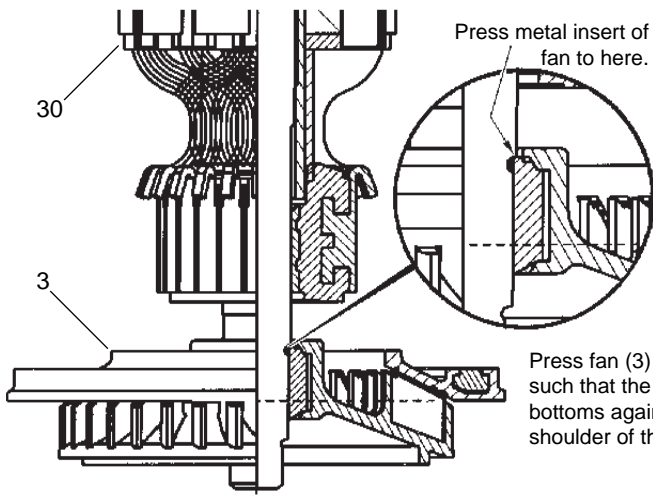
**LUBRICATION NOTES: (TYPE "S2" GREASE, NO. 49-08-5265)**



**See back page for special service tool and torque values**

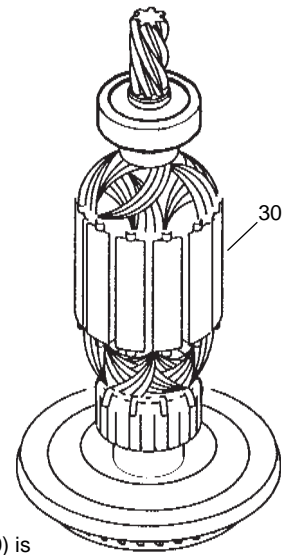


Prior to assembly, apply a light coat of grease to the Gearcase Seal (62) and O-Rings (63, 64, 67, 68 and 70).

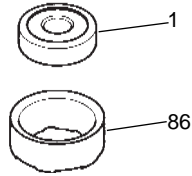


Press metal insert of fan to here.

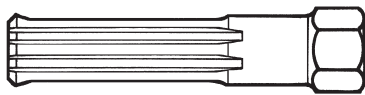
Press fan (3) onto armature (30) such that the metal insert of the fan bottoms against the fan journal shoulder of the armature shaft.



After the armature assembly (30) is installed into the tool, the bearing cup (86) is to be placed on the rear armature bearing (1), (already pressed onto the armature shaft), prior to assembling the motor cover (47) to the tool.



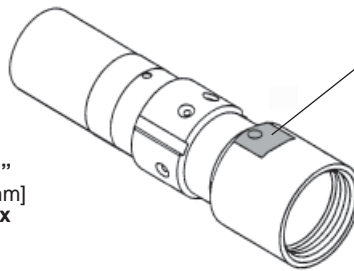
**NOTE:** Do not dislodge the bearing cup from the bearing during assembly.



61-10-2060 SDS-MAX Shank



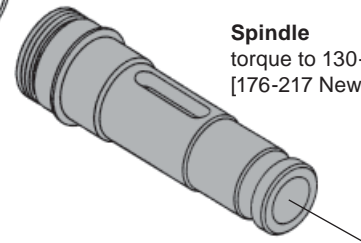
3/4"  
[19mm]  
Hex



**Barrel**

when tightened in a vise, **extra care** should be taken not allowing the barrel to turn and mar or burr it's finished cylindrical surface.

no loctite® is required on threads of spindle or barrel.



**Spindle**

torque to 130-160 ft-lbs.  
[176-217 Newton-meters]

**BARREL / SDS MAX SPINDLE SERVICING-**

To aid in the servicing of the Barrel and Spindle of the 5314-21 SDS-MAX Rotary Hammer, a Service Tool No. 61-10-2060 has been developed [see illustrations].

- clamp the flats of the Barrel in a vise.
- use a 3/4" [19mm] socket on the hex of Service Tool to either remove [turning counter-clockwise] or install [turning clockwise] the Spindle.

**SERVICE NOTE:**  
SLIP CLUTCH VALUES

When servicing this SDS-MAX Rotary Hammer, the static torque required to slip the clutch mechanism should be checked. It must not exceed the maximum value shown below:

- block armature from rotating.
- using service tool and ft.-lb [newton-meter] torque wrench with 3/4" [19mm] socket, check the static torque required to slip the Spindle / Clutch Mechanism of the Rotary Hammer.
- **the torque for the 5314-21 should be 40-50 ft-lb. [52-68 Nm].**