



SERVICE PARTS LIST

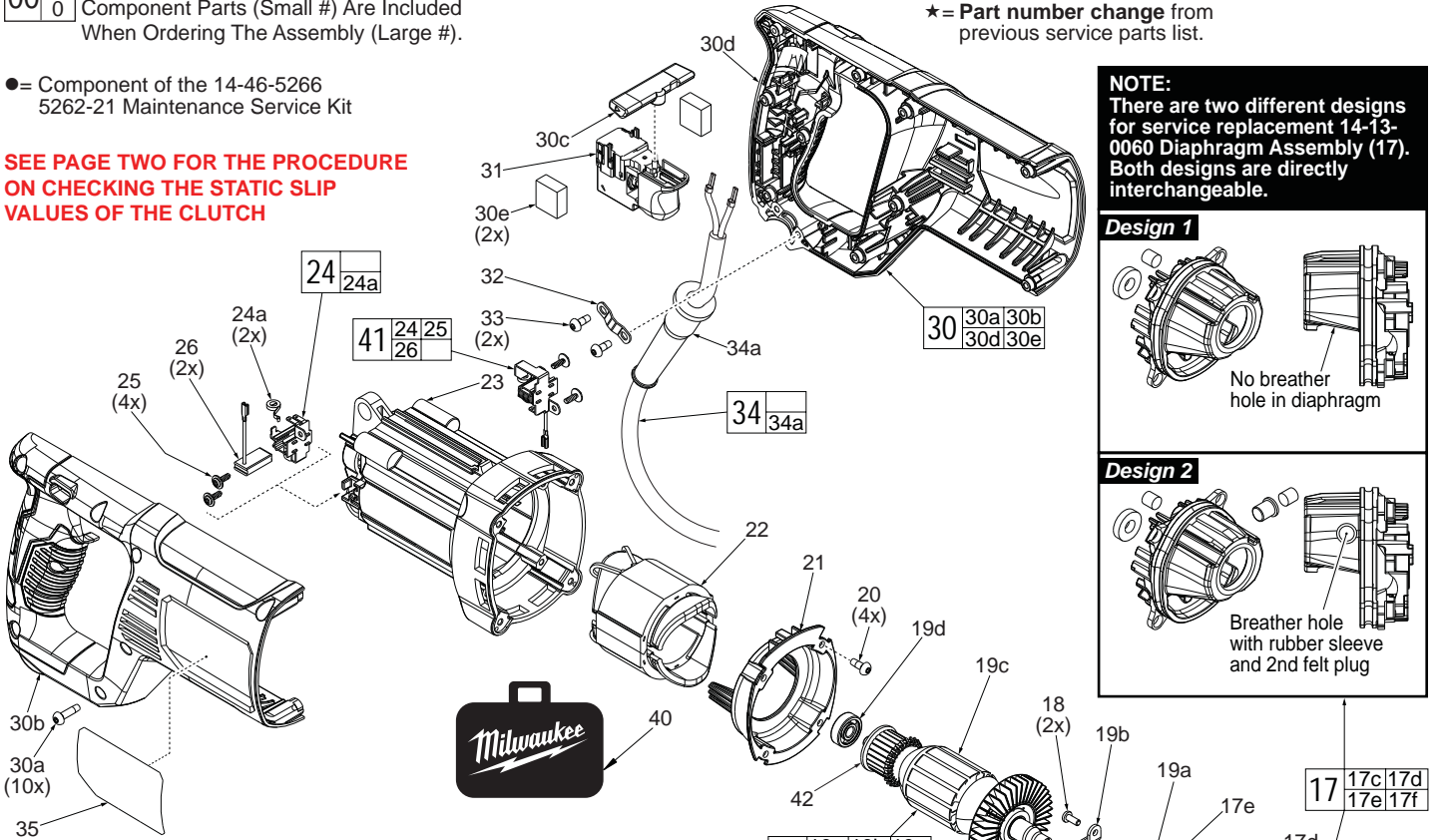
BULLETIN NO.
54-24-5263

SPECIFY CATALOG NO. AND SERIAL NO. WHEN ORDERING PARTS		REVISED BULLETIN 54-24-5262	DATE July 2015
1" D-HANDLE ROTARY HAMMER			
CATALOG NO.	5262-21	SERIAL NUMBER	G43B
		WIRING INSTRUCTION See page 6	

EXAMPLE:
Component Parts (Small #) Are Included
When Ordering The Assembly (Large #).

● = Component of the 14-46-5266
5262-21 Maintenance Service Kit

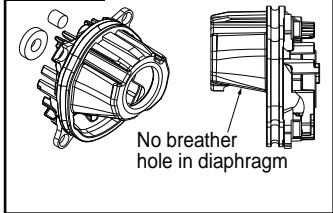
**SEE PAGE TWO FOR THE PROCEDURE
ON CHECKING THE STATIC SLIP
VALUES OF THE CLUTCH**



★ = Part number change from
previous service parts list.

NOTE:
There are two different designs
for service replacement 14-13-
0060 Diaphragm Assembly (17).
Both designs are directly
interchangeable.

Design 1



Design 2

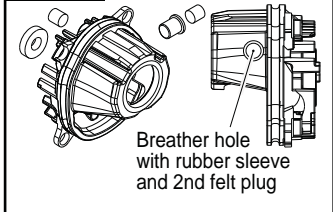


FIG.	PART NO.	DESCRIPTION OF PART	NO. REQ.
17	14-13-0060	Diaphragm Assembly w/ Bushing	(1)
17a	43-44-1375	● Gasket	(1)
17c	-----	Diaphragm w/ Bushing	(1)
★ 17d	43-84-0300	Felt Plug	(2)
17e	45-06-5263	Seal Ring	(1)
★ 17f	43-44-0024	Rubber Sleeve	(1)
18	05-78-0105	M4 x 10mm Pan Hd. Tapt. T-20 Screw	(2)
19	16-10-0102	120V Armature Assembly	(1)
19a	02-04-0039	Ball Bearing	(1)
19b	44-66-0117	Bearing Retaining Plate	(1)
19c	-----	Armature	(1)
19d	02-04-5382	Ball Bearing	(1)
20	05-78-5313	M4 x 9mm Pan Hd. Plast. T-15 Screw	(4)
21	42-14-0112	Fan Baffle	(1)
22	18-01-0032	120V Field Assembly	(1)
23	28-50-0052	Motor Housing	(1)
24	22-20-0029	Brush Holder	(2)
24a	-----	Brush Spring	(2)
25	05-88-0030	M3 x 8.5mm Pan Hd. ST T-10 Screw	(4)
26	22-18-0032	● 120V Carbon Brush	(2)
27	23-94-0033	Leadwire Assembly-Red (See page 5)	(1)
28	23-94-0037	Leadwire Assembly-Blue (See page 5)	(1)
29	36-92-0010	Reduction Gear Assembly	(1)
29a	44-90-1180	● C-Ring	(1)
29b	32-60-1611	2nd Stage Pinion	(1)
29c	36-66-0026	Reduction Gear Shaft	(1)
29d	45-22-0927	Coupler	(1)
★ 29e	40-50-0047	Shift Spring	(1)
29f	45-22-0926	Wobble Coupler	(1)
29g	36-92-5263	Wobble Bearing	(1)
29h	32-75-0027	1st Stage Gear	(1)
29j	44-66-0022	Retaining Plate	(1)
29k	02-04-5385	Ball Bearing	(1)
29m	06-82-0017	● M4 x 10mm T-15 Screw	(1)
30	14-34-0025	Housing Assembly	(1)

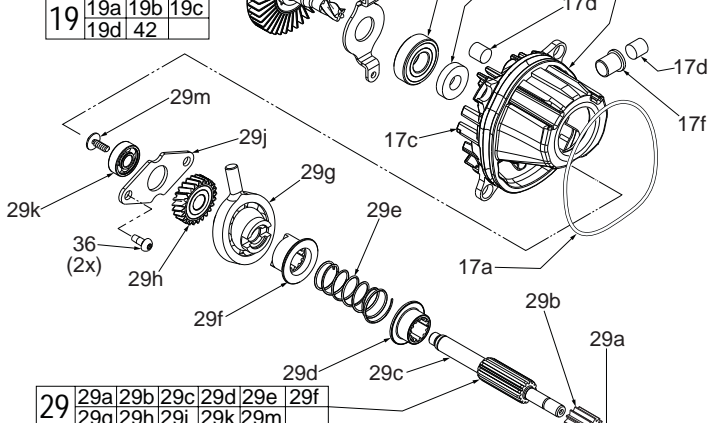
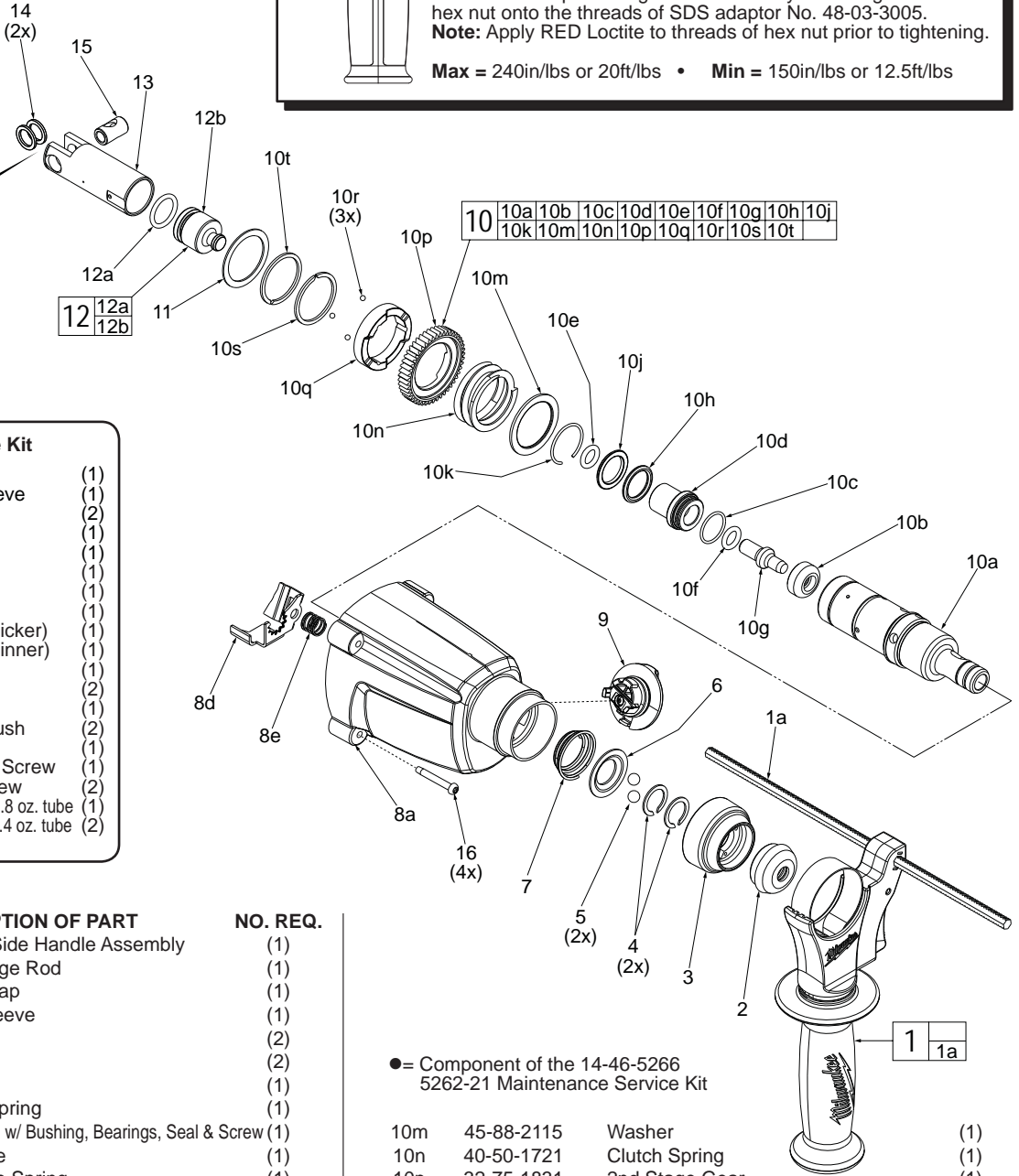
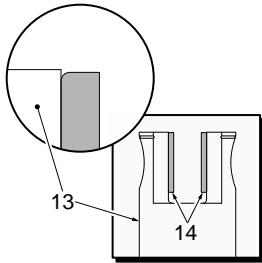


FIG.	PART NO.	DESCRIPTION OF PART	NO. REQ.
30a	06-82-0995	M4 x 16mm Pan Hd. Plast. T-20 Screw	(10)
30b	-----	Housing Halve - Right	(1)
30c	45-34-0017	Forward/Reverse Lever	(1)
30d	-----	Housing Halve - Left	(1)
30e	44-52-0025	Foam Pad	(2)
31	23-66-0013	120V Switch	(1)
32	42-68-0601	Cord Clamp	(1)
33	05-78-5313	M4 x 9mm Pan Hd. Plast. T-15 Screw	(2)
34	22-64-0027	120V Power Cord	(1)
34a	44-76-0210	Strain Relief	(1)
35	12-20-5261	Service Nameplate	(1)
36	05-74-1030	● M5 x 8mm Pan Hd. Tapt. T-25 Screw	(2)
40	42-55-5263	Blow Molded Carrying Case	(1)
41	22-22-0043	Brush Service Kit (Set of 2)	(1)
42	23-16-0092	Commutator Insulator	(1)

MILWAUKEE ELECTRIC TOOL CORPORATION
13135 W. LISBON RD., BROOKFIELD, WI 53005
Dwg. 1

IMPORTANT:
Rounded side of Washers (14) must be placed facing the inside surface of Piston (13) as shown.



To check the static slip values of the clutch you must do the following:

- Position Red spring loaded shifting lever at the hammer only icon.
- Lock motor housing of tool into the jaws of a vise having brass jaws or the equivalent.
- Insert a SDS Plus adaptor* into spindle.
- Turn torque wrench clockwise as viewed from the front of the tool until the single slip cycle has been accomplished. Observe the torque reading. Slip clutch a minimum of three times for the most accurate reading.

*SDS Plus Adaptor being used is made by threading a 1/2" x 20 hex nut onto the threads of SDS adaptor No. 48-03-3005.
Note: Apply RED Loctite to threads of hex nut prior to tightening.

Max = 240in/lbs or 20ft/lbs • Min = 150in/lbs or 12.5ft/lbs

●14-46-5266

Rotary Hammer Service Kit

2	42-52-5262	Dust Cap	(1)
3	31-58-0037	Chuck Sleeve	(1)
4	44-90-0014	C-Ring	(2)
10c	34-40-1425	O-Ring	(1)
10e	34-40-0018	O-Ring	(1)
10f	34-40-0013	O-Ring	(1)
10h	34-40-1440	O-Ring	(1)
10k	44-90-1026	Snap Ring	(1)
10s	44-90-0216	C-Ring (Thicker)	(1)
10t	44-90-0215	C-Ring (Thinner)	(1)
12a	34-40-1511	O-Ring	(1)
14	45-88-5200	Washer	(2)
17a	43-44-1375	Gasket	(1)
26	22-18-0032	Carbon Brush	(2)
29a	44-90-1180	C-Ring	(1)
29m	06-82-0017	M4.0 x 0.7 Screw	(1)
36	05-74-1030	Taptite Screw	(2)
	49-08-5355	'Q2' Grease 2.8 oz. tube	(1)
	49-08-5262	'S2' Grease 1.4 oz. tube	(2)

FIG.	PART NO.	DESCRIPTION OF PART	NO. REQ.
1	14-34-5262	Auxiliary Side Handle Assembly	(1)
1a	44-94-5381	Depth Gage Rod	(1)
2	42-52-5262	● Rubber Cap	(1)
3	31-58-0037	● Chuck Sleeve	(1)
4	44-90-0014	● C-Ring	(2)
5	02-02-0275	Steel Ball	(2)
6	42-36-0191	Ball Plate	(1)
7	40-50-5262	Conical Spring	(1)
8a	28-14-0013	Gearcase w/ Bushing, Bearings, Seal & Screw	(1)
8d	44-90-1011	Lock Plate	(1)
8e	40-50-0870	Lock Plate Spring	(1)
9	44-10-5264	Shift Knob Assembly	(1)
★ 10	32-75-0024	SDS Spindle and Gear Assembly	(1)
★ 10a	38-50-0034	SDS Spindle	(1)
★ 10b	43-06-0032	Brake Ring	(1)
10c	34-40-1425	● O-Ring	(1)
★ 10d	45-22-0011	Anvil Sleeve	(1)
10e	34-40-0018	● O-Ring	(1)
★ 10f	34-40-0013	● O-Ring	(1)
★ 10g	45-08-0021	Anvil	(1)
10h	34-40-1440	● O-Ring	(1)
10j	42-76-1001	Washer	(1)
10k	44-90-1026	● Snap Ring	(1)

● = Component of the 14-46-5266
5262-21 Maintenance Service Kit

10m	45-88-2115	Washer	(1)
10n	40-50-1721	Clutch Spring	(1)
10p	32-75-1831	2nd Stage Gear	(1)
★ 10q	42-70-0782	Clutch Plate	(1)
10r	02-02-1230	Steel Ball	(3)
10s	44-90-0216	C-Ring (Thicker than 10t)	(1)
10t	44-90-0215	● C-Ring	(1)
11	45-88-0026	● Washer	(1)
12	45-56-0037	Striker Assembly	(1)
12a	34-40-1511	O-Ring	(1)
12b	-----	● Striker	(1)
13	44-62-0058	Piston	(1)
14	45-88-5200	Washer	(2)
15	44-60-0033	● Wrist Pin	(1)
16	06-81-5383	M4 x 35mm Pan Hd. Plast. T-20 Screw	(4)