



10

509

PARTS LIST No. 135

J/D

*Discount, 2-1-64
PER D.A.A.R. 1-7-64
REPLACED BY MOD. 505
84-15-64 PER
DISTR. MGR. BULLETIN
PC-104*

REF. NO.	PART NUMBER	NO. REQ'D.	PART NAME	REF. NO.	PART NUMBER	NO. REQ'D.	PART NAME
* 1	1024	1	Armature-115V	223	41X	4	Screw-Upper Bearing Plate
* 1	41359	1	Armature-230V	224	1100X	1	Nut-Crankshaft
* 2	1022	1	Field-115V	225	1730X	2	Screw-Field
* 2	41360	1	Field-230V	226	1495X	1	Screw-Sanding Pad Locking
3	26689	2	Brush-115V	227	1831X	3	Connector-Solderless
3	41602	2	Brush-230V	228	1385	1	Seal-Armature Shaft
3A	1089	2	Cap-Brush	229	1959X	4	Rivet-Tumbler Spring
3B	1026	2	Holder-Brush	230	1965X	1	Washer-Pad Holder Lock
4	1214Y	1	Switch and Escutcheon	231	2002X	4	Screw-Pad
5	2279X	1	Cord-115V	232	193X	3	Washer-Upper Brg. Plate Lock
5	1021	1	Cord-230V (U.S. & Export Only)	233	1041Y	1	Filter-Dust (Carton of 12-1012Y)
11	512X	1	Bearing-Armature Comm. End	234	1409Y	1	Transmission without Pad (Order 1398Y)
11A	27394	1	Bearing-Armature Fan End	235	1419	1	Gasket-Upper Bearing Plate
13	2010X	2	Bearing-Idler Stud		1085		Cement (For Felt Pad 1 pt.)
14	512X	1	Bearing-Crankshaft Upper		1113	1	Lug-Ground Wire
14A	2918X	1	Bearing-Crankshaft Lower		1116	4	Insulator-Motor Housing Dowel
20	2918X	1	Bearing-Counterweight		1119	1	Grommet-Cord
34	1381	1	Gear-Crankshaft		1130	2	Washer-Insulator
35	1060	1	Gear-Idler		1131	2	Washer-Spacer
40B	1382	1	Stud-Idler		1351	1	Fender-Right Hand
40D	1418Y	1	Crankshaft (W/ Counter-weight)		1352	1	Fender-Left Hand
52	1050	1	Housing-Motor		1354	4	Nut-Motor Housing Fender
52B	1051	1	Cap-Motor		1397	1	Nameplate (115V)
57	1090	1	Handle		41358	1	Nameplate (230V) (U.S. & Export Only)
61	1052	1	Grille		240X	1	Wrench-Sanding Pad
67	1375	1	Plate-Main Bearing		306X	4	Screw-Motor Housing Fender
67A	1376	1	Plate-Upper Bearing		1188X	2	Screw-Name Plate
85	1392Y	1	Pad-Sanding		1215Y	1	Switch-Escutcheon and cord Assy.
85A	1396	4	Post-Pad		1398Y	1	Transmission Assembly (Complete with Pad)
200	710X	1	Key-Crankshaft Gear		2705X		Lead-Field (W/Brush Holder Spring) (Service Only)
201	1077	1	Pin-Grille Hinge		1088		Fan-Armature (Service Only)
202	1081	2	Baffle-Fibre		27395	1	Ring-Nilos
203	1082	1	Baffle-Upper				Lubricants
204	1084	1	Spring-Grille				
205	1087	1	Spring-Armature Bearing Loading				
206	1097	1	Screw-Escutcheon				
207	1099	2	Screw-Motor Cap				
208	1835X	1	Screw-Handle				
	194XS	1	Washer-Handle Lock				
	2423X	1	Washer-Handle				
209	1835X	2	Screw-Transmission				
	194XS	2	Washer-Transmission Lock				
	22423X	2	Washer-Transmission				
210	1106	2	Screw-Brush Holder				
211	1118	1	Reliever-Cord Strain				
212	1121	1	Ring-Upper Baffle Snap				
213	1136	2	Spaghetti-5 1/2" Long				
214	1137	2	Washer-Brush Holder				
215	1173	1	Shield-Armature Lower Bearing				
216	1174	1	Guard-Commutator				
217	1967X	2	Washer-Field Lock				
218	1377	2	Washer-Idler Stud				
219	1384	2	Spring-Tumbler				
220	39703	2	Tumbler				
221	1387	1	Pad-Felt				
222	9-OS4	1	Nut-Pad Bearing Lock				

Abrasive Sheet Size: 3 2/3" x 9"

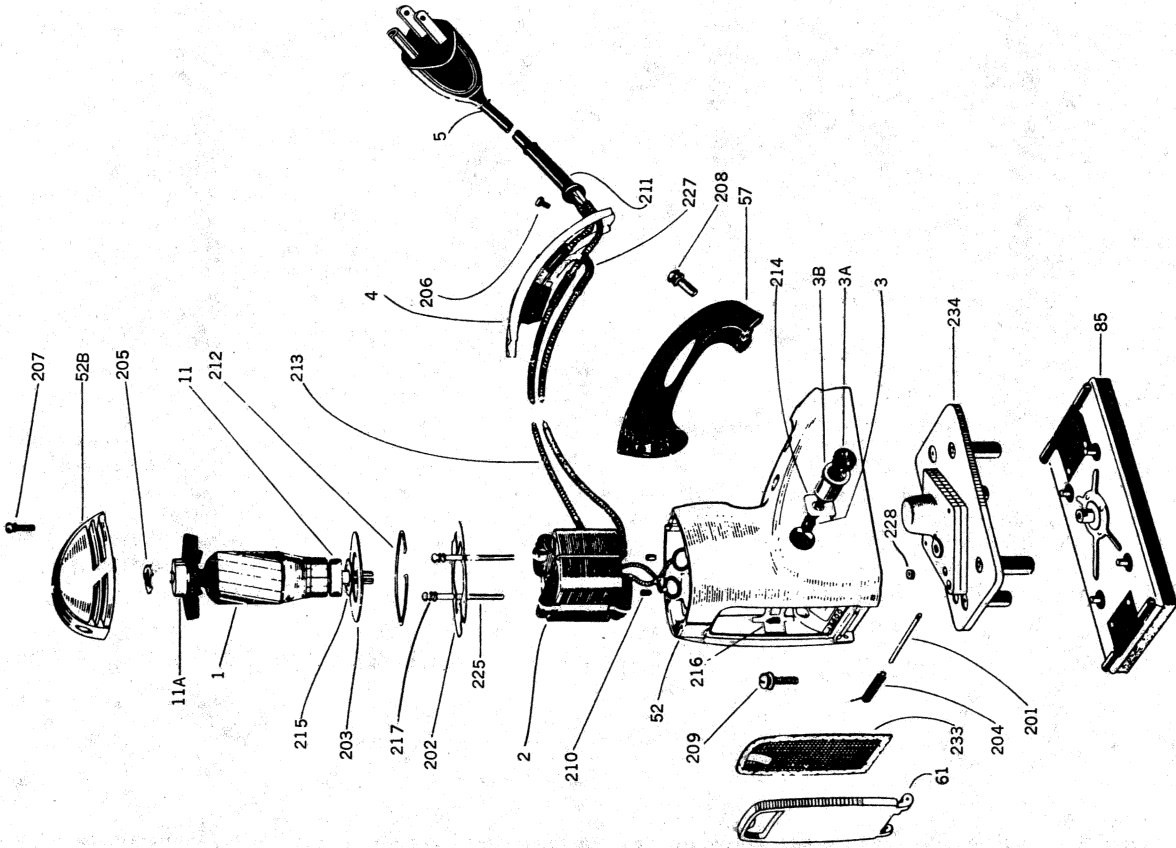
IMPORTANT

*When ordering a field and/or armature, please specify the Part Number(s), the number(s) stamped on the lamination stacking and/or armature wedges, in addition to the Model, Serial Number and Voltage on the Name Plate.

When ordering other parts, please specify the Model and Serial Number of the machine as given on the Name Plate and the Quantity, Part Number and Name as listed above.

DEC 31 1962

SANDER MODEL 509



1398-Y TRANSMISSION COMPONENTS

