



# Pneumatic Reversible Drill

#505610, JAT-610

#505611, JAT-611



JAT-610 shown

## Operation & Parts Manual

M-505610

Edition 3

11/2018

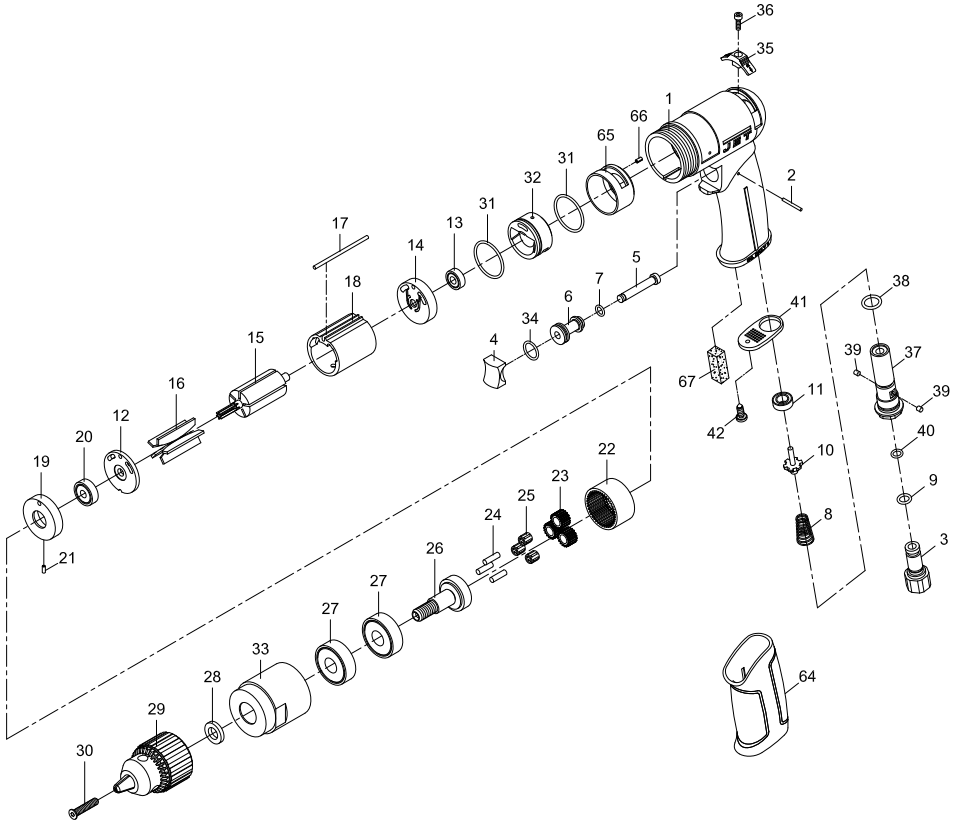


|                 |
|-----------------|
| Stock No.:      |
| Serial No.:     |
| Purchased from: |
| Date purchased: |

**JET**  
427 New Sanford Road  
LaVergne, TN 37086  
Ph.: 800-274-6848  
[www.jettools.com](http://www.jettools.com)

Copyright © 2015 JET

# #505610, JAT-610, 3/8-inch Pneumatic Drill – exploded view



## #505610, JAT-610, 3/8-inch Pneumatic Drill – parts list

| Index | Part No.    | Description        | Qty |
|-------|-------------|--------------------|-----|
| 1     | JAT610-01   | Motor housing      | 1   |
| 2     | JSM7572-02  | Pin 2x18.8         | 1   |
| 3     | JSM7572-03  | Air inlet          | 1   |
| 4     | JSM7572-04  | Trigger            | 1   |
| 5     | JSM7572-05  | Valve stem         | 1   |
| 6     | JSM7572-06  | Valve bushing      | 1   |
| 7     | 40333-12    | O-Ring 6x1.5       | 1   |
| 8     | 73108       | Valve spring       | 1   |
| 9     | 70109NPN    | O-Ring 9.8x19      | 1   |
| 10    | JSM7572-146 | Valve stem         | 1   |
| 11    | JSM7572-145 | Rubber spacer      | 1   |
| 12    | 80214       | End Plate          | 1   |
| 13    | BB-696ZZ    | Ball bearing 696ZZ | 1   |
| 14    | JSM7572-14  | Rear end plate     | 1   |
| 15    | 80215       | Rotor              | 1   |
| 16    | JSM7572-16  | Rotor vane         | 5   |
| 17    | JSM7572-17  | Pin 2.5x55         | 1   |
| 18    | JAT610-18   | Cylinder           | 1   |
| 19    | JSM7572-19  | Front end plate    | 1   |
| 20    | BB-626ZZ    | Ball bearing 626ZZ | 1   |
| 21    | 70117       | Spring pin 2x5L    | 1   |
| 22    | 80222       | Internal gear      | 1   |
| 23    | 70423-14    | Planet gear        | 3   |
| 24    | 30124       | Pin 4x13.8L        | 3   |

| Index | Part No.      | Description                  | Qty |
|-------|---------------|------------------------------|-----|
| 25    | 80245         | Needle bearing 4x7x8         | 3   |
| 26    | SM-70526      | Work spindle                 | 1   |
| 27    | BB-6201Z      | Ball bearing 6201Z           | 2   |
| 28    | 70133         | Washer 1/8in.                | 1   |
| 29    | JAT620-27     | Jacobs keyed chuck 3/8in.    | 1   |
| 30    | SM-70530      | Screw M5x25                  | 1   |
| 31    | JSM3330-49    | O-Ring 26.7x1.78             | 2   |
| 32    | JSM7572-32    | Reversing valve              | 1   |
| 33    | SM-70534      | Clamp nut                    | 1   |
| 34    | 80209         | O-Ring 12x1.6                | 1   |
| 35    | JSM7572-35    | Reversing valve knob         | 1   |
| 36    | JSM7572-36    | Screw M3x10                  | 1   |
| 37    | JSM7572-37    | Fixed shaft                  | 1   |
| 38    | JSM7572-38    | O-Ring 10.8x2                | 1   |
| 39    | JSM7572-39    | Pin 3x3                      | 2   |
| 40    | JSM3330-46    | O-Ring 7.5x1.5               | 1   |
| 41    | JSM7572-41    | Exhaust diffuser             | 1   |
| 42    | JSM7572-42    | Screw TS2.9                  | 1   |
| 64    | JSM7572-64    | Rubber grip                  | 1   |
| 65    | JSM7572-65    | Reverse valve case           | 1   |
| 66    | JSM5430-42    | Spring pin 2x4               | 1   |
| 67    | JSM7572-67    | Damping material             | 1   |
| 68    | JSM7572-29KEY | Chuck key 3/8in. (not shown) | 1   |

RPK-7572, Repair Kit, contains 7,9,16(5),31(2),34,38

RBK-7572, Rebuild Kit, contains 14,17,18,19,23(3),25(3)