



# SERVICE PARTS LIST

**BULLETIN NO.**  
54-22-1240

**SPECIFY CATALOG NO. AND SERIAL NO. WHEN ORDERING PARTS**

REVISED BULLETIN

DATE  
Dec. '98

**3/4 H.P. BENCH GRINDER W/LIGHTED EYESHIELDS**

WIRING INSTRUCTION  
**58-01-0026**

**CATALOG NO. 5051**

STARTING  
SERIAL NUMBER

**W10-86**

EXAMPLE:

00  
0

Component Parts (Small #)  
Are Included When Ordering  
The Assembly (Large #).

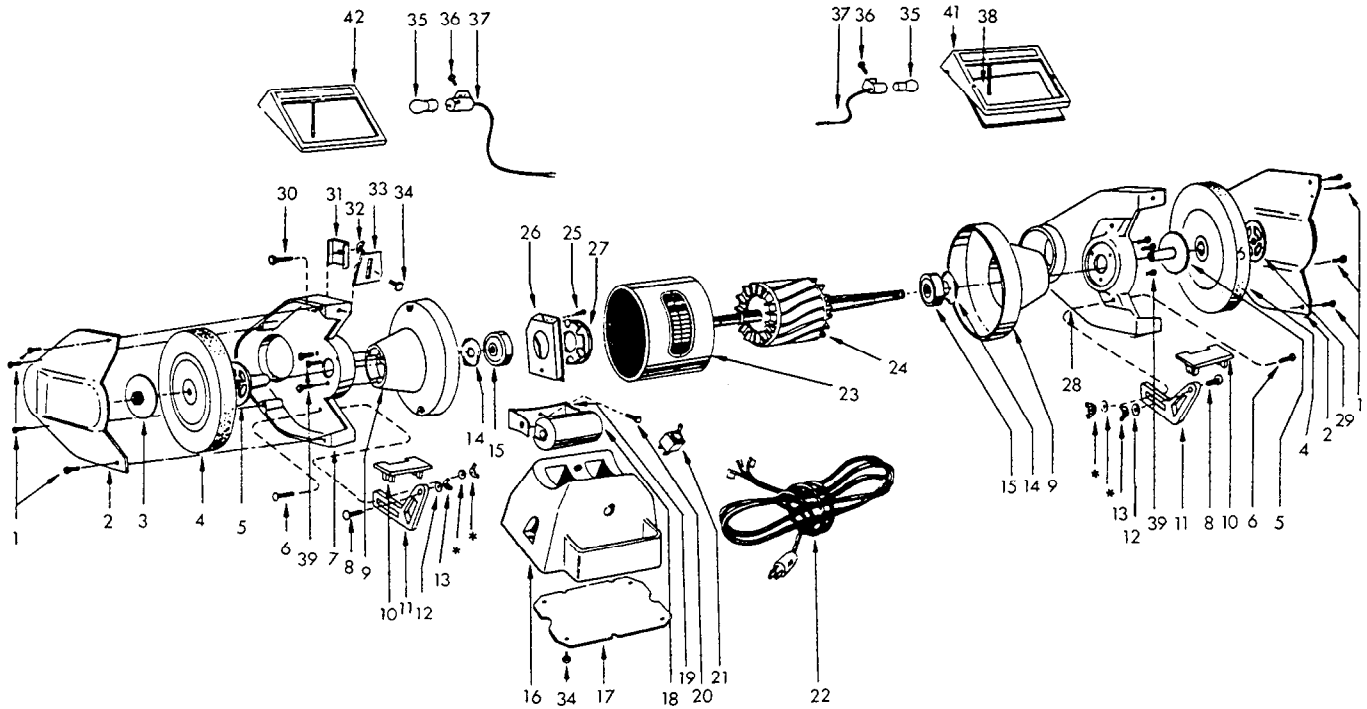


FIG.	PART NO.	DESCRIPTION OF PART	QTY
1	06-95-0325	Self Tapping Screw 10-24 x 3/8"	(8)
2	42-92-0700	Guard Cover	(2)
3	06-55-3510	Left Hand Hex Nut 3/4" x 10	(1)
4	43-34-0630	Wheel Flange	(2)
5	43-34-0640	Wheel Flange	(2)
6	06-75-0535	Cap Screw 3/8"-16 x 1-1/4"	(2)
7	43-54-0620	Left Guard	(1)
8	06-10-1300	Carriage Bolt 3/8"-16 x 1-1/2"	(2)
9	42-25-2550	Endbell	(2)
10	44-85-0200	Tool Rest	(2)
11	42-09-0020	Tool Rest Arm	(2)
12	45-88-8090	Flat Washer 3/8"	(6)
13	06-55-2500	Hex Nut 3/8"-16	(2)
14	45-88-8115	Bearing Felt Washer	(2)
15	02-04-2035	Bearing	(2)
16	42-20-0640	Base	(1)
17	44-66-5680	Base Plate	(1)
18	22-33-0330	Capacitor	(1)
19	22-40-0110	Capacitor Bracket	(1)
20	06-81-2661	Flat Hd. Machine Screw 10-24 x 3/8"	(1)
21	23-66-1560	Toggle Switch	(1)
22	22-64-1120	Cord Set	(1)
23	23-58-0730	Stator	(1)
24	23-40-0620	Rotor (Incl. Fig. 27)	(1)

FIG.	PART NO.	DESCRIPTION OF PART	QTY
25	06-95-0110	Self Tapping Screw 6-32 x 5/16"	(2)
26	23-66-1620	Stationary Switch	(1)
27	23-66-1580	Rotary Switch	(1)
28	43-54-0630	Right Guard	(1)
29	06-55-3520	Right Hand Hex Nut 3/4" x 10	(1)
30	06-75-0150	Cap Screw 1/4"-20 x 1"	(2)
31	42-70-5060	Eyeshield Clip	(2)
32	06-59-2000	Wing Nut 1/4"-20	(2)
33	45-12-0390	Spark Shield	(2)
34	06-75-0296	Self Tapping Screw 5/16"-18 x 1/2"	(2)
35	22-23-0010	Automotive Bulb	(2)
36	06-75-0022	Cap Screw 10-24 x 5/16"	(2)
37	23-33-0430	Light Socket	(2)
38	49-62-0115	Replacement Plexiglass Lens	(2)
39	06-75-0105	Cap Screw 1/4"-20 x 3/4"	(6)
40	06-75-0300	Cap Screw 5/16"-18 x 3/4"	(4)
41	43-40-0260	Right Eyeshield Frame (Incl. Fig. 38)	(1)
42	43-40-0270	Left Eyeshield Frame (Incl. Fig. 38)	(1)
43	-----	Grinding Wheel 8" x 1" x 3/4" (see cat.)	(1)
44	-----	Grinding Wheel 8" x 1" x 3/4" (see cat.)	(1)
---	12-99-0460	Nameplate	(1)

**Items Not Shown**

---	06-55-1050	Hex Nut 10-24	(6)
---	22-90-0180	Grommet	(1)
---	06-08-0050	Thru Bolt 10-24 x 6-3/4"	(4)

\* Included in Tool Rest Kit 14-46-1096