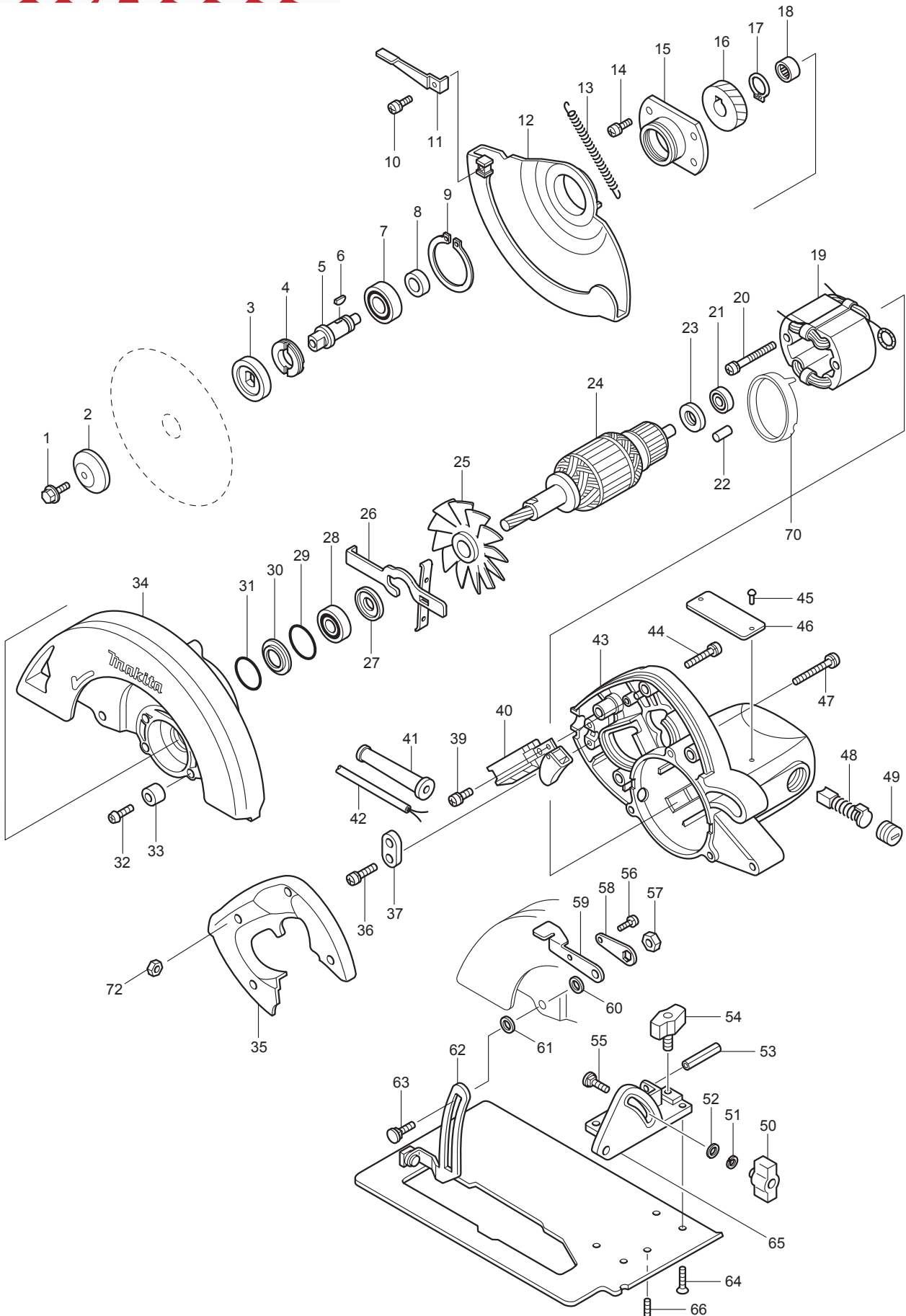




10 - 2008

5008NB

8-1/4" CIRCULAR SAW



Item No.	Part No.	Description	Qty	Unit
1	251644-1	HEX. FLANGE HEAD BOLT M8X20	1	PC.
2	224275-9	OUTER FLANGE 40	1	PC.
3	224151-7	INNER FLANGE 40	1	PC.
4	285807-7	BEARING RETAINER 22-36	1	PC.
5	321060-2	SPINDLE (TYPE1)	1	PC.
	323789-6	SPINDLE (TYPE2)	1	PC.
6	254032-1	WOODRUFF KEY 5	1	PC.
7	211206-7	BALL BEARING 6202LLB	1	PC.
8	257064-7	RING 15	1	PC.
9	961201-4	RETAINING RING S-42	1	PC.
10	911106-8	PAN HEAD SCREW M4X8	1	PC.
11	341417-1	LEVER	1	PC.
12	315325-2	SAFETY COVER	1	PC.
13	231753-2	TENSION SPRING 5	1	PC.
14	911126-2	PAN HEAD SCREW M4X16	4	PC.
15	321362-6	BEARING BOX	1	PC.
16	221687-7	HELICAL GEAR 43	1	PC.
17	961055-9	RETAINING RING S-15	1	PC.
18	212052-1	NEEDLE BEARING 1010	1	PC.
19	636066-0	FIELD ASS'Y 115V	1	PC.
	INC. 654020-2	RING TERMINAL	2	PC.
	INC. 654502-4	CONNECTOR P-2	2	PC.
20	266046-8	TAPPING SCREW 5X50	2	PC.
21	211033-2	BALL BEARING 608LB	1	PC.
22	263002-9	RUBBER PIN 4	1	PC.
23	681625-5	INSULATION WASHER	1	PC.
24	616606-0	ARMATURE ASS'Y 115V	1	PC.
24	INC.	Item No. 21, 25, 27, 28		
25	241513-4	FAN 92 (F/ ARMATURE ASS'Y)	1	PC.
26	163113-9	SPINDLE LOCK	1	PC.
27	213102-5	DUST SEAL 12	1	PC.
28	211106-1	BALL BEARING 6201LLB	1	PC.
29	213459-4	O RING 32	1	PC.
30	341736-5	WASHER 25	1	PC.
31	213412-0	O RING 29	1	PC.
32	* 251350-8	+ COUNTERSUNK HEAD SCREW M6X28 (TYPE2)	1	PC.
33	* 262553-9	RUBBER SLEEVE 6 (TYPE2)	1	PC.
34	* 154888-1	BLADE CASE COMPLETE (TYPE3)	1	PC.
	INC. *****	Item No. 18, 29		
35	* 416889-0	HANDLE COVER (TYPE4)	1	PC.
36	* 265995-6	TAPPING SCREW 4X18 (TYPE4)	2	PC.
37	* 687063-9	STRAIN RELIEF (TYPE4)	1	PC.
39	* 266020-6	TAPPING SCREW 4X12 (TYPE4)	1	PC.
40	651168-1	SWITCH TG923TN-1, AC/DC (TYPE2)	1	PC.
	651172-0	SWITCH TG933TN-1, AC/DC (TYPE3)	1	PC.
41	682505-8	CORD GUARD 10-90	1	PC.
42	664265-4	CORD WITH PLUG 2P-16-2.5M	1	PC.
43	* 156465-5B	MOTOR HOUSING COMPLETE (TYPE1-3)	1	PC.
	INC. 643660-1	BRUSH HOLDER 6.5-13.5	2	PC.
	INC. *****	Item No.22		
	* 152928-9	MOTOR HOUSING COMPLETE (TYPE4)	1	PC.
	INC. 643660-1	BRUSH HOLDER 6.5-13.5 (TYPE1)	2	PC.
	643653-8	BRUSH HOLDER 6.5-13.5 (TYPE2)	2	PC.

Item No.	Part No.	Description	Qty	Unit
44	*	265995-6 TAPPING SCREW 4X18 (TYPE4)	4	PC.
45		953106-2 RIVET 0-5 (OLD)	2	PC.
47		911273-9 PAN HEAD SCREW M5X50	3	PC.
48	181047-4	CARBON BRUSH CB-154 2PCS/PK	1	SET
	181048-2	A.C. CARBON BRUSH CB-155, 2PCS/PK - OPTIONAL	1	SET
49	643650-4	BRUSH HOLDER CAP 6.5-13.5	2	PC.
50	252624-0	WING NUT M6	1	PC.
51	942151-2	SPRING WASHER 6	1	PC.
52	941151-9	FLAT WASHER 6	1	PC.
53	951225-8	SPRING PIN 6-40	1	PC.
54	251858-2	SCREW M6X15	1	PC.
55	251920-3	CAP SQUARE NECK BOLT M6X30	1	PC.
56	911106-8	PAN HEAD SCREW M4X8	1	PC.
57	931402-8	HEX. NUT M8	1	PC.
58	341415-5	LOCK PLATE	1	PC.
59	341416-3	LEVER PLATE	1	PC.
60	941201-0	FLAT WASHER 8	1	PC.
61	267096-6	FLAT WASHER 8	1	PC.
62	*	163250-9 BASE (TYPE3)	1	PC.
63	*	265965-5 CAP SQUARE NECK BOLT M8X24 (TYPE2)	1	PC.
64	*	912212-2 COUNTERSUNK HEAD SCREW M5X12	4	PC.
65	*	163253-3 ANGULAR PLATE	1	PC.
66	265882-9	- SCREW M5X12 (TYPE1)	1	PC.
	266180-4	+ SCREW M5X12 (TYPE2)	1	PC.
	266213-5	H.S.SET SCREW (FLAT POINT) M5X12 (TYPE3)	1	PC.
70	415603-1	FAN GUIDE	1	PC.
72	931102-0	HEX NUT M4 (OLD)	4	PC.
73	687080-9	FIELD CLAMP	2	PC.
100	652021-4	SCREW#5-40 UNCX5 (F /TYPE1 SWITCH #651121-7 - N/L/A)	4	PC.
	652008-6	+ P.H.SCREW M3.5X7 (F / TYPE2&3 SWITCH #651168-1, 651172-0)	4	PC.
101	654001-6	TERMINAL R1.25-3.5 (F/ SWITCH)	4	PC.
<b>ACCESSORIES</b>				
A01	*****	8-1/4"C.T SAW BLADE (SEE CATALOGUE FOR DETAILS)	1	PC.
A02	782016-4	OFFSET WRENCH 13	1	PC.
A03	164095-8	GUIDE RULE	1	PC.

INC.=INCLUDES

\* SEE SERVICE CHANGE

**1. Service Change on Armature, Field, Motor Housing, etc.**

Item No.	Description	TYPE1	TYPE2	TYPE3	TYPE4
24	Armature	614586-4 (N/L/A)		616606-0	
		14.0mm shaft	16.0mm shaft		
23	Insulation Washer	681619-0 (N/L/A)	681625-5		
19	Field Ass'y	624536-1		636066-0	
43	Motor Housing Com.	156465-5B (N/L/A)			152928-9
70	Fan Guide	N/A	N/A	415603-1	
35	Handle Cover	411523-7B			416889-0
37	Strain Relief	687001-1			687063-9
22	Rubber Pin	263002-9			N/A
39	Screw 4x12	911119-9			266020-6
36	Screw	911131-9 or 911133-5 (P.H.4x18)			265995-6 (Tapping 4x18)
20	Screw	911280-2 (P.H.M5x55)	911676-7 (P.H.M5x55)	266046-8 (TAPPING SCREW Mx50)	
44	Screw	911148-2 (P.H.M4x25)			265995-6 (Tapping 4x18)
72	Hex Nut M4	931102-0			N/A
73	Field Clamp	N/A	N/A	687080-9	

Above Parts are interchangeable as a set.

**2. Service Change on Blad Case Com.,etc.**

Item No.	Description	TYPE2	TYPE3
32	Screw	251247-1 (P.H.M6x20)	251350-8 (+C.S.H M8x28)
33	Rubber Sleeve 6	262502-6	262553-9
34	Blade Case Com.	153305-8 (N/L/A)	154888-1 (N/L/A)

Above Parts are interchangeable as a set.

**3. Service Change on Flat Washer & C.H.Bolt M8x24**

Item No.	Description	TYPE1	TYPE2
61	Flat Washer	253069-5 (ID=12mm)	267096-6 (ID=8mm)
63	C.H.Bolt M8X24	251918-0	265965-5

Above Parts are interchangeable as a set.

ID=Inside Diameter

**4. Service Change on Base and Angular Plate**

Item No.	Description	TYPE1	TYPE2	TYPE3
62	Base	163218-5 (N/L/A)	163250-9	
64	Screw M5X12	N/A	912212-2 or 266213-5	
			5PCS	4PCS
65	Angular Plate	163217-7 (N/L/A)	163253-3	

Above Parts are interchangeable as a set.