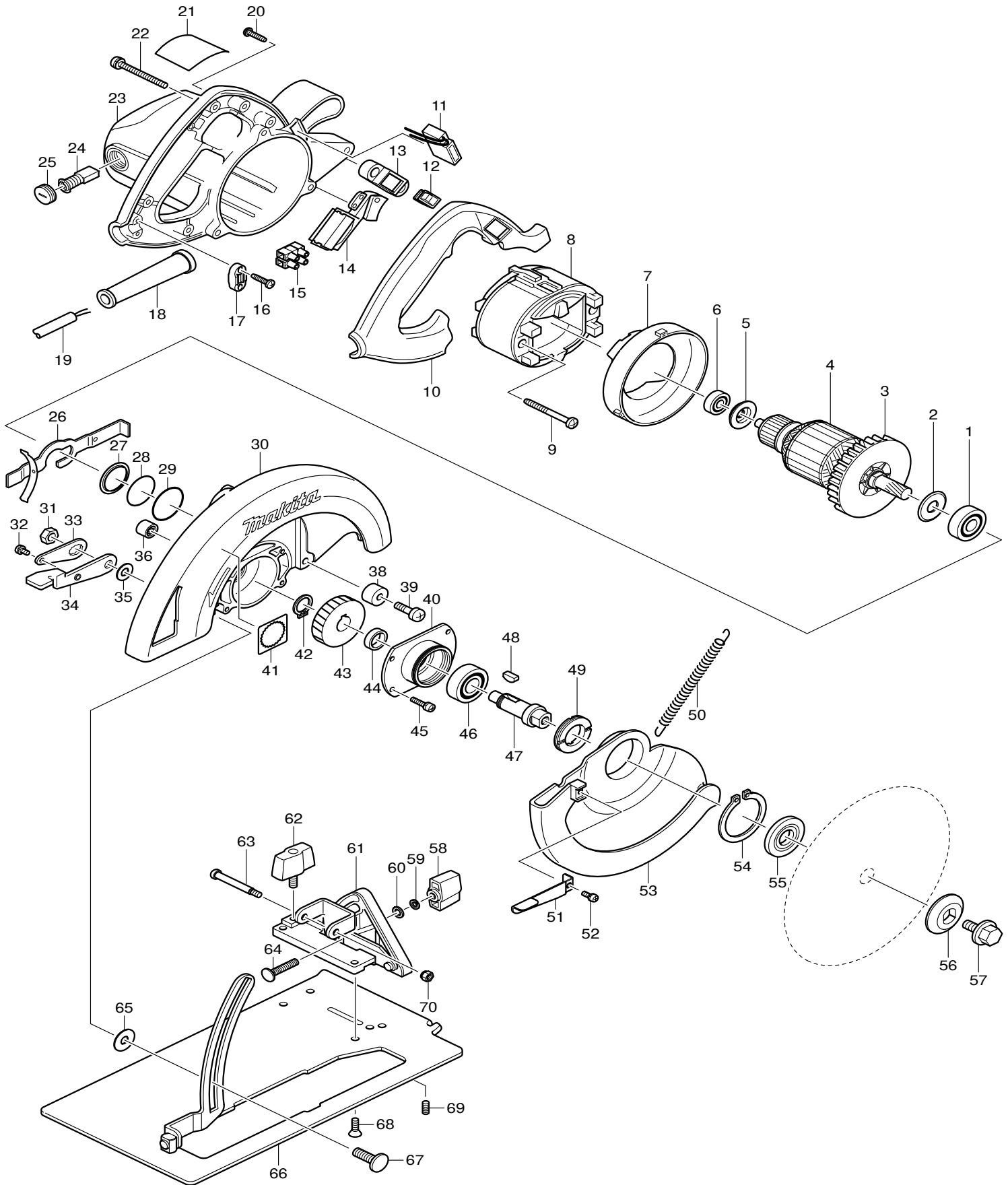




10-2006
5008FA
8-1/4" CIRCULAR SAW W/BRAKE



<u>ITEM#</u>	<u>PART #</u>	<u>DESCRIPTION</u>	<u>Q' TY</u>	<u>UNIT</u>	
1	211106-1	BALL BEARING 6201LLB	1	PC.	
2	213102-5	DUST SEAL 12	1	PC.	
3	240003-4	FAN 80	1	PC.	
4	510057-8	ARMATURE ASS' Y (INC 1, 2, 3, 5, 5)	1	PC.	
5	681625-5	INSULATION WASHER	1	PC.	
6	211033-2	BALL BEARING 608LB	1	PC.	
7	417711-4	BUFFLE PLATE	1	PC.	
8	596231-2	FIELD ASS' Y	1	PC.	
	C10	654020-2	RING TERMINAL	1	PC.
	C20	654502-4	CONNECTOR P-2	1	PC.
9	266046-8	TAPPING SCREW 5X50	2	PC.	
10	417712-2	HANDLE COVER	1	PC.	
11	631453-8	LIGHT CIRCUIT	1	PC.	
12	651514-8	SWTCH	1	PC.	
13	417468-7	FRAME	1	PC.	
14	651042-3	SWTCH	1	PC.	
15	654531-7	TERMINAL BLOCK 2P	1	PC.	
16	265995-6	TAPPING SCREW 4X18	2	PC.	
17	687052-4	STRAIN RELIEF	1	PC.	
18	682505-8	CORD GUARD 10-90	1	PC.	
19	664463-0	CORD WTH PLUG 2P-14, 2. 5M	1	PC.	
20	265995-6	TAPPING SCREW 4X18	4	PC.	
22	911273-9	PAN HEAD SCREW M5X50	3	PC.	
23	152989-9	MTOR HOUSING COMPLETE	1	PC.	
	C10	643653-8	BRUSH HOLDER 6. 5-13. 5	2	PC.
24	181047-4	CARBON BRUSH CB-154	1	SET	
25	643650-4	BRUSH HOLDER CAP 6. 5-13. 5	2	PC.	
26	163113-9	SPINDLE LOCK	1	PC.	
27	341736-5	WASHER 25	1	PC.	
28	213412-0	O RING 29	1	PC.	
29	213459-4	O RING 32	1	PC.	
30	153305-8	BLADE CASE COMPLETE (INC 29, 36) (TYPE 1)	1	PC.	
		154888-1	BLADE CASE COMPLETE (INC. 29, 36) (TYPE 2)	1	PC.
31	931402-8	HEX. NUT M8	1	PC.	
32	911106-8	PAN HEAD SCREW M8X8	1	PC.	
33	341415-5	LOCK PLATE	1	PC.	
34	341416-3	LEVER PLATE	1	PC.	
35	941201-0	FLAT WASHER 8	1	PC.	

<u>ITEM#</u>	<u>PART #</u>	<u>DESCRIPTION</u>	<u>Q' TY</u>	<u>UNIT</u>
36	212052-1	NEEDLE BEARING 1010	1	PC.
38	262502-6	RUBBER SLEEVE 6 (TYPE 1)	1	PC.
	262553-9	RUBBER SLEEVE 6 (TYPE 2)	1	PC.
39	251247-1	C. H. SCREW M \times 28	1	PC.
	251350-8	(+) C. H. SCREW M \times 28 (TYPE2)	1	PC.
40	321362-6	BEARING BOX	1	PC.
42	961055-9	RETAINING RING S-15	1	PC.
43	221687-7	HELICAL GEAR 43	1	PC.
44	257064-7	RING 15	1	PC.
45	911126-2	PAN HEAD SCREW M \times 16	4	PC.
46	211206-7	BALL BEARING 6202LLB	1	PC.
47	323789-6	SPINDLE	1	PC.
48	254032-1	WOODRUFF KEY 4	1	PC.
49	285807-7	BEARING RETAINER 22-36	1	PC.
50	231753-2	TENSION SPRING 5	1	PC.
	231838-4	TENSION SPRING 4 (TYPE 2)	1	PC.
51	341417-1	LEVER	1	PC.
52	911111-5	PAN HEAD SCREW M \times 10	1	PC.
53	315325-2	SAFETY COVER	1	PC.
54	961201-4	RETAINING RING S-42	1	PC.
55	224151-7	INNER FLANGE 40	1	PC.
56	224275-9	OUTER FLANGE 40	1	PC.
57	251644-1	HEX. FLANGE HEAD BOLT M \times 20	1	PC.
58	252624-0	WING NUT M ϕ	1	PC.
59	942151-2	SPRING WASHER 6	1	PC.
60	941151-9	FLAT WASHER 6	1	PC.
61	163253-3	ANGULAR PLATE	1	PC.
62	251858-2	SCREW M \times 15	1	PC.
63	265075-8	+ PAN HEAD SCREW M ϕ	1	PC.
64	251920-3	CAP SQUARE NECK BOLT M \times 30	1	PC.
65	267096-6	FLAT WASHER 8	1	PC.
66	163250-9	BASE	1	PC.
67	265965-5	CAP SQUARE NECK BOLT M \times 24	1	PC.
68	912212-2	COUNTERSUNK HEAD SCREW M \times 12	4	PC.
69	266213-5	HEX. SOCKET HEAD SCREW M \times 12	1	PC.
70	252103-8	HEX. LOCK NUT M ϕ -8	1	PC.

ACCESSORIES

A01	164095-8	GUIDE RULE	1	PC.
A02	721336-1A	T. C. T. SAW BLADE 210	1	PC.
A03	782016-4	OFFSET WRENCH 13	1	PC.