

PARTS LEGEND

5250/65S-PP, 500570

▲ 1	019625	7	Socket Head Capscrew, #8-32 x 1/2"	*60	402008	1	Gasket, Nose Flange
2	401955	8	Flat Washer, #8	61	402005	1	Flange, Nose
**3	402057	1	Air Deflector	62	008787	2	Roll Pin, 3/16" Dia. x 1" Lg.
4	500453	1	Bumper, Post	62A	401697	2	Roll Pin
7	092735	4	Socket Head Capscrew, 1/4-20 x 1-1/4"	63	401988	1	Spring, Work Contacting Element
8	002187	4	Lock Washer, 1/4"	64	500585	1	Lower W.C.E. Bracket
9	092757	4	Flat Washer	65	402094	2	Flat Washer, #10
10	500452	1	Cap	66	004238	1	Lock Washer, #10
*11	401983	1	Gasket	▲ 67	009037	2	Socket Head Capscrew, 10/32 x 1/2"
12	500407	1	Spring	68	500577	1	Work Contacting Element
13	406041	1	Retaining Ring	69	402095	1	Nut Bar
*14	500461	1	"O" Ring, Upper Valve Piston	70	500575	1	Nose
15	500455	1	Upper Valve Piston	71	009016	4	Socket Head Capscrew, 5/16-18 x 1"
16	401946	1	Seal, Main Valve	72	095417	4	Lock Washer, 5/16"
*17	092042	1	"O" Ring, Lower Valve Piston	73	002442	4	Lock Washer, #8
*18	091208	1	"O" Ring, Lower Valve Piston	74	500948	1	Cover, Magazine
*19	401950	1	"O" Ring, Lower Valve Piston	75	401978	1	Spring, Upper Work Contacting Element
20	500456	1	Lower Valve Piston	76	401977	1	Upper Work Contacting Element
21	500454	1	Post	77	402010	2	Bushing
22	095432	1	"O" Ring, Post	78	500627	4	Socket Head Capscrew 8-32 x 1/2"
▲ 23	402906	1	Button Head Capscrew, #10-32 x 5/8"	79	500580	1	Magazine, Right and Left(Includes Part# 401920)
25	091861	1	Nut	80	900220	1	Bracket, Probe
26	092116	1	Washer	81	500584	1	Shear Block (Including Pin)
*27	092971	1	"O" Ring, Piston	82	401975	2	Pin, Shear Block
28	401956	1	Piston	83	500862	1	Follower Assembly
*29	401904	1	Driver Blade	84	900222	1	Pin, Probe
30	402011	1	Seal, Sleeve	85	900221	1	Probe
31	500860	1	Sleeve	86	401965	1	Drum, Negator
*32	092762	1	"O" Ring Upper, Sleeve	*87	401964	1	Spring, Negator
*33	091024	1	"O" Ring Lower, Sleeve	88	403042	1	Cover, Spring
34	401984	1	Flange	89	008731	1	Socket Head Capscrew, #10-24 x 3/4"
34A	402993	1	Shim	90	016343	2	Socket Head Capscrew, #8-32 x 1-1/4"
*35	401985	1	"O" Ring, Flange	91	403738	1	Pin, Magazine
*36	404768	1	Bumper	92	403739	1	Spring, Magazine Pin
37	401936	1	Housing	93	023766	1	Retainer Ring
38	404937	2	Logo, Housing	94	500630	1	Socket Head Capscrew, #8-32 x 1"
39	097748	1	Spring, Valve Pin	95	500576	1	Channel
40	097746	1	Valve Pin	97	500581	1	Spacer, Magazine
*41	092174	1	"O" Ring, Valve Body	98	091591	1	"O" Ring, End Plug
42	401958	1	Valve Body	99	401974	4	Screw, Wear Plate
43	026133	3	Roll Pin, 1/8" Dia. x 1" Lg.	100	404046	1	Wear Plate Kit
44	401992	1	Spring, Interm. Work Contacting Element	101	900196	1	Retaining Ring, Probe Pin
45	401991	1	Intermediate Work Contacting Element	*102	500458	1	Warning Label
46	096893	1	Name Plate	103	401980	1	Bolt Knob
47	402079	1	Trigger Pin	104	500488	1	Grip Handle
48	404325	4	Stop Nut	105	900223	1	Knob
50	406006	1	Sequential Trigger Assembly	106	900224	1	Label
51	500856	2	Socket Head Capscrew #8-32 x 3/8"	107	500588	1	Label, Long/Short
53	406026	4	Cup Washer, Diffuser	108	900130	1	Handle
▲ 54	401940	1	End Plug	109	900117	1	Lever
55	091622	1	Reducing Pipe Bushing	110	900131	1	Retaining Ring
56	401997	1	Cup, Knob	111	900124	1	Plunger
57	401996	1	Spring, Knob	112	900126	1	Spring
58	401993	1	Knob	113	091880	1	Roll Pin, Knob
59	401998	1	Mounting Insert	114	501213	1	Logo, Magazine

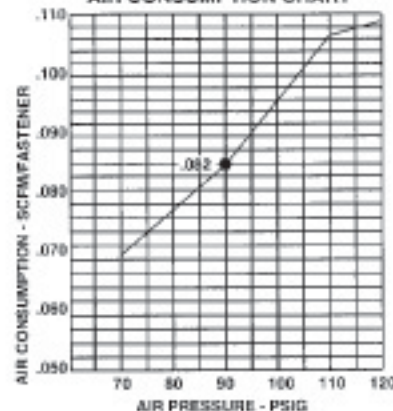
* Denotes normal wear items

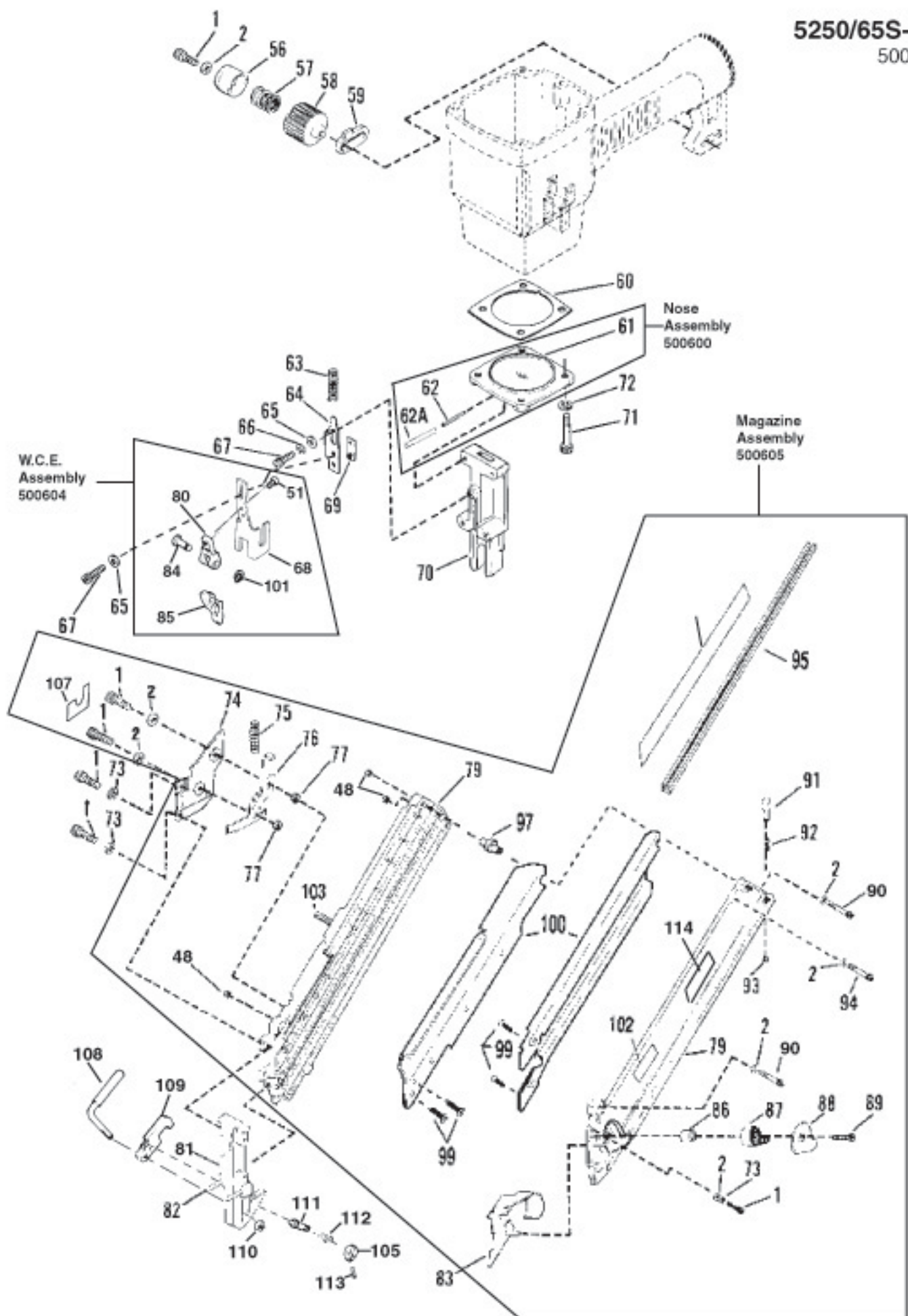
**NOTE: Make sure warning label (500458) is properly affixed. Replace if necessary. Label available at no charge through the Service Dept.

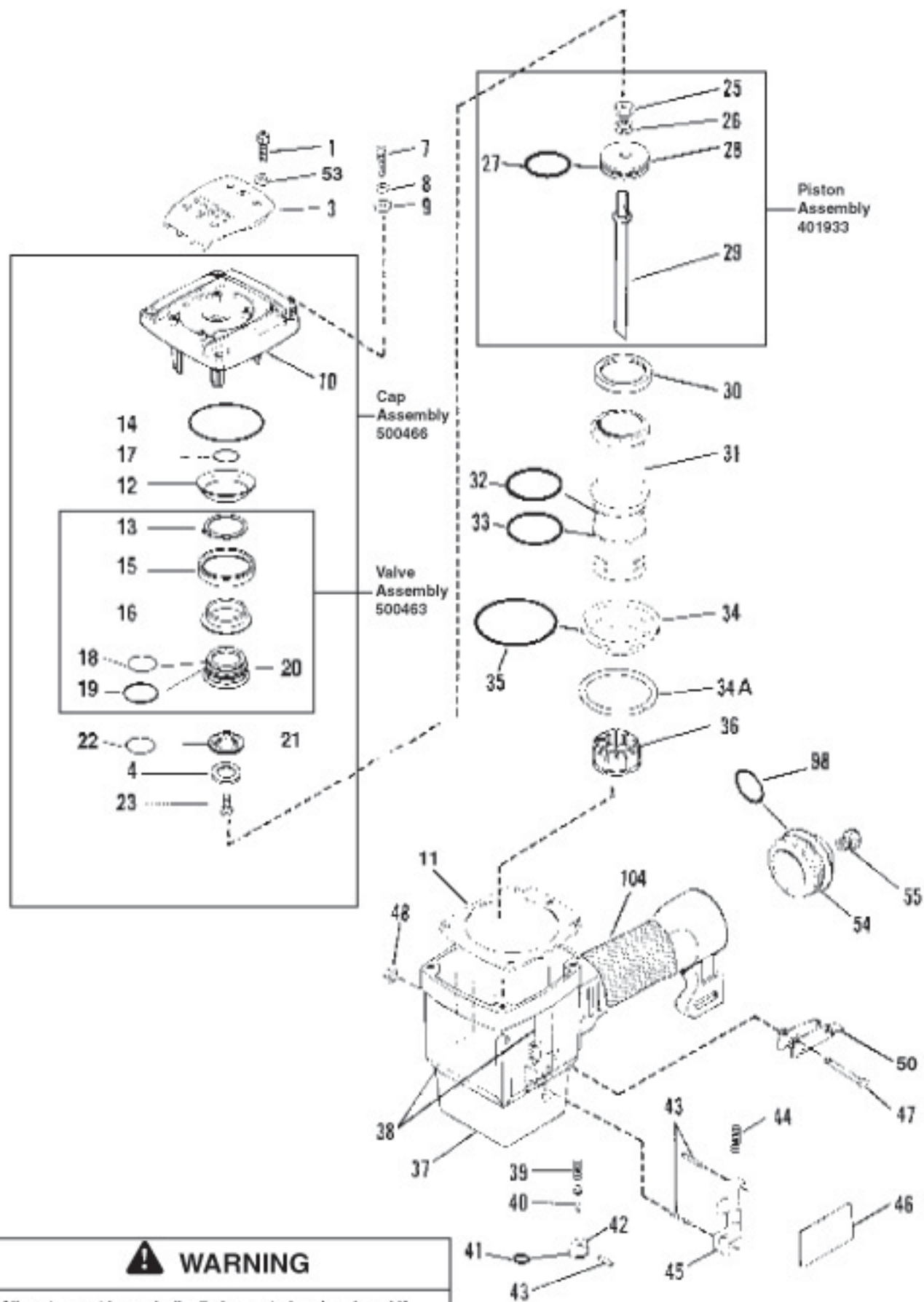
▲ Apply loctite 242 (Blue) Part No. 093500

→Denotes new change

AIR CONSUMPTION CHART







WARNING

All parts must be periodically inspected and replaced if worn or broken. Failure to do this can affect the tool's operation and present a safety hazard.