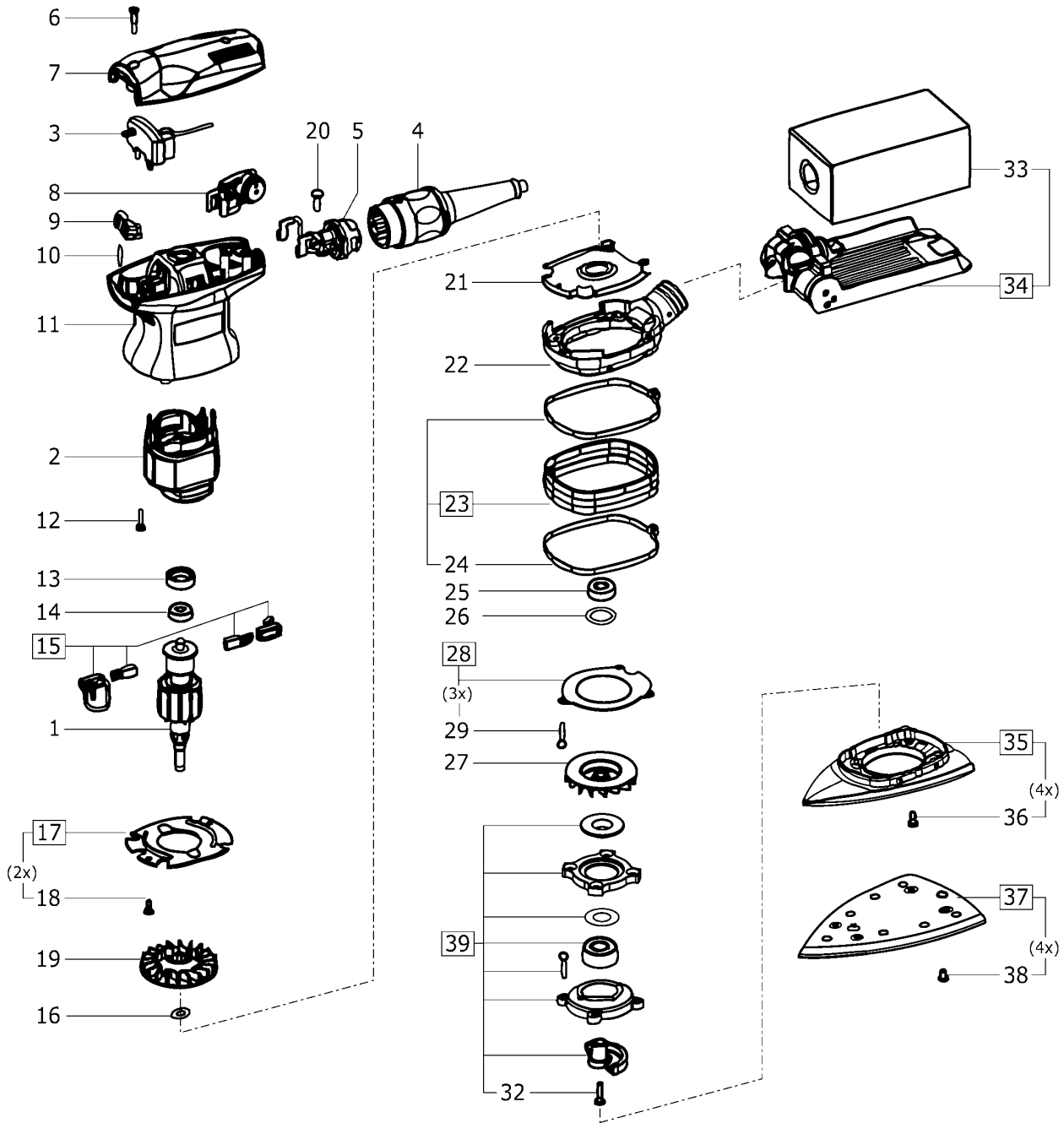


500235 - DTS 400 EQ 120V



Pos	Part No.	Description	Quantity
1	493924	Armature 120V	1
2	489526	Field assembly	1
3	488631	Switch modul	1
4	---	See catalogue	1
5	489742	Socket housing 110 - 240V	1
6	228725	Raised-head screw 3,5 x 25 mm	2
7	491607	Cap EQ	1
8	489498	Electronic 120V	1
9	450967	Switching jack	1
10	223518	Cylinder pin	2
11	463618	Motor housing EQ	1
12	228584	Raised-head screw 3,5 x 14 mm	2
13	450508	Rubber ring	1
14	228672	Ball bearing	1
15	490714	Brush holder Pair, 230 V/machine production after 2000	1
16	400884	Shim ring	1
17	489522	Air guide washer	1
18	219031	Raised-head screw 3,5 x 10 mm	2
19	469328	Fan	1
20	219031	Raised-head screw 3,5 x 10 mm	2
21	467992	Inlays	1
22	469583	Bearing cover	1
23	489184	Collar	1
24	453707	Clamping strap	2
25	401525	Ball bearing	1
26	204471	Snap ring	1
27	10028628	Aspirator	1
28	489185	Plate	1
29	400528	Raised-head screw 4,0 x 30 mm	3
32	400290	Raised-head screw M4 x 12	1
33	---	See catalogue	1
34	489129	Turbo filter bag set TFS - RS 400	1
35	493722	Plate	1
36	401063	Cheese-head screw	4
37	---	See catalogue	1
38	400663	Raised-head screw M4 x 10	4
39	500246	Bearing flange	1