



# SERVICE PARTS LIST

**BULLETIN NO.**  
**54-49-6105**

<b>SPECIFY CATALOG NO. AND SERIAL NO. WHEN ORDERING PARTS</b>		REVISED BULLETIN	DATE
<b>7" Dust Collection Shroud</b>			July 2013
<b>CATALOG NO. 49-40-6105</b>		WIRING INSTRUCTION	

**EXAMPLE:**  
00/0 Component Parts (Small #) Are Included  
When Ordering The Assembly (Large #).

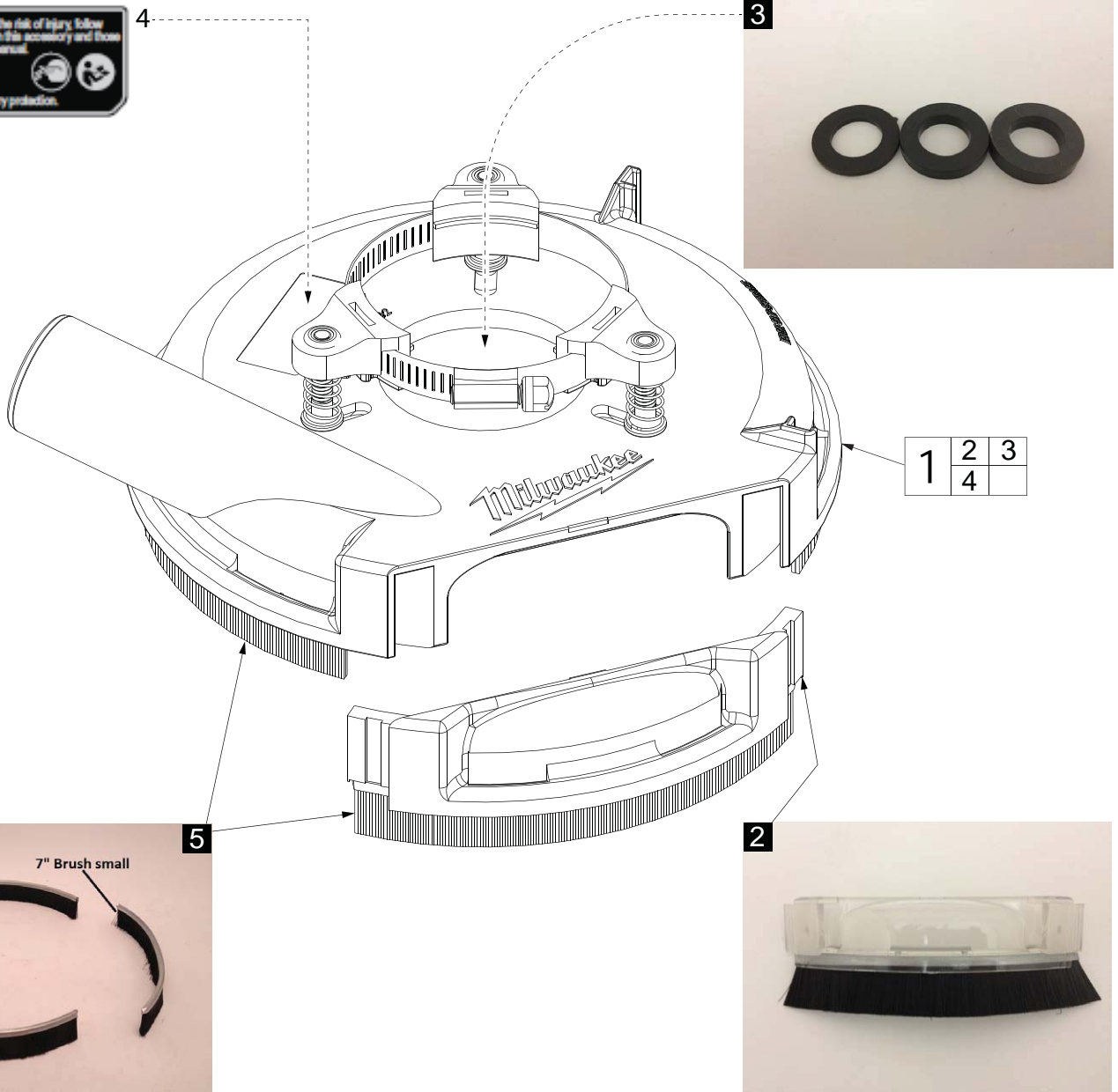


FIG.	PART NO.	DESCRIPTION OF PART	NO. REQ.
1	49-40-6105	7" Dust Collection Shroud	(1)
2	14-46-0062	7" Edge Clip	(1)
3	14-46-0063	Spacer (Set of 3 Spacers)	(1)
4	10-15-0011	Warning Label	(1)
5	31-01-0190	7" Brush Kit	(1)