

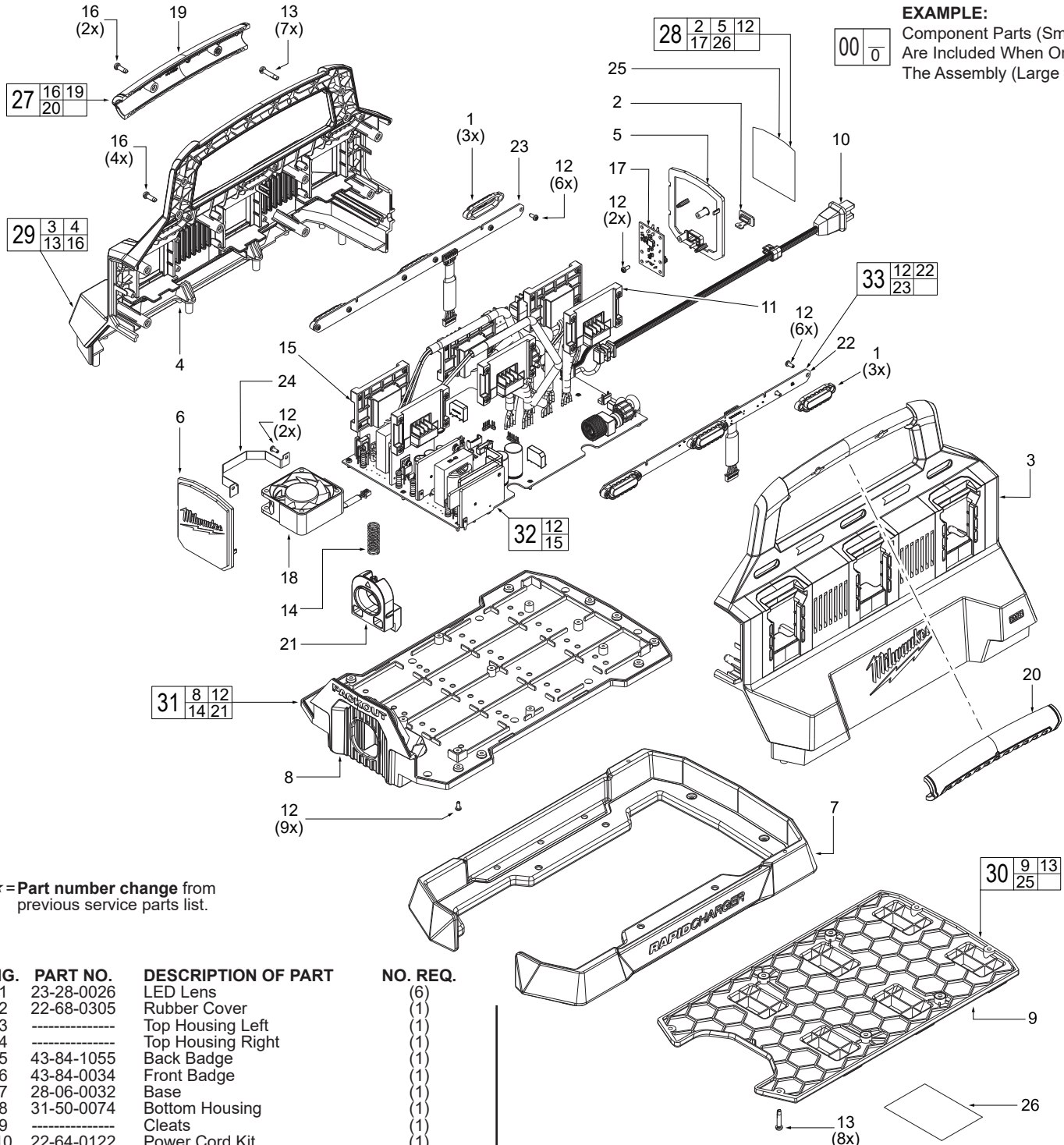


# SERVICE PARTS LIST

**BULLETIN NO.**  
**PN0001531**

SPECIFY CATALOG NO. AND SERIAL NO. WHEN ORDERING PARTS		REVISED BULLETIN PN0001531	DATE Mar. 2025
<b>M18™ PACKOUT™ SIX BAY RAPID CHARGER</b>			
CATALOG NO.	<b>48-59-1809</b>	SERIAL NO.	<b>M76B</b>
WIRING INSTRUCTION			

**EXAMPLE:**  
Component Parts (Small #)  
Are Included When Ordering  
The Assembly (Large #).



★ = Part number change from previous service parts list.

FIG.	PART NO.	DESCRIPTION OF PART	NO. REQ.
1	23-28-0026	LED Lens	(6)
★ 2	22-68-0305	Rubber Cover	(1)
3	-----	Top Housing Left	(1)
4	-----	Top Housing Right	(1)
★ 5	43-84-1055	Back Badge	(1)
6	43-84-0034	Front Badge	(1)
7	28-06-0032	Base	(1)
8	31-50-0074	Bottom Housing	(1)
9	-----	Cleats	(1)
10	22-64-0122	Power Cord Kit	(1)
★ 11	22-40-0175	Terminal Holder	(1)
12	06-82-0027	M3 x 7mm PH T-10 Screw	(25)
13	06-82-0011	M4 x 36mm PH T-20 Screw	(15)
14	40-50-0391	Spring	(1)
★ 15	14-20-4015	PCBA	(1)
16	05-74-0197	M4 x 12mm PH T-20 Screw	(6)
★ 17	22-80-0630	USB Board	(1)
★ 18	22-84-1020	Fan Assembly	(1)
19	-----	Handle Cover Right	(1)
20	-----	Handle Cover Left	(1)
21	42-36-0088	Locker	(1)
22	-----	LED Board Left	(1)
23	-----	LED Board Right	(1)
24	42-36-0089	Fan Bracket	(1)

FIG.	PART NO.	DESCRIPTION OF PART	NO. REQ.
25	10-20-9112	Service Nameplate	(1)
26	12-25-0619	Warning Label	(1)
27	31-44-0274	Handle Grip Kit	(1)
★ 28	14-20-4020	USB PCBA Kit	(1)
29	31-44-0308	Top Housing Kit	(1)
30	45-58-0286	Packout Cleat Kit	(1)
31	31-76-0024	Packout Locker Kit	(1)
★ 32	14-20-4025	Main PCBA Service Kit	(1)
33	22-09-0114	LED Board Kit	(1)

**MILWAUKEE TOOL • www.milwaukeetool.com**  
13135 W. LISBON RD., BROOKFIELD, WI 53005  
Drwg. 1