



SERVICE PARTS LIST

BULLETIN NO.
55-04-0330

SPECIFY CATALOG NO. AND SERIAL NO. WHEN ORDERING PARTS		REVISED BULLETIN	DATE
CHARGER			Apr. '99
CATALOG NO. 48-59-0179	STARTING SERIAL NUMBER	976A	
		WIRING INSTRUCTION See Inset	

EXAMPLE:

00	0
----	---

 Component Parts (Small #) Are Included When Ordering The Assembly (Large #).

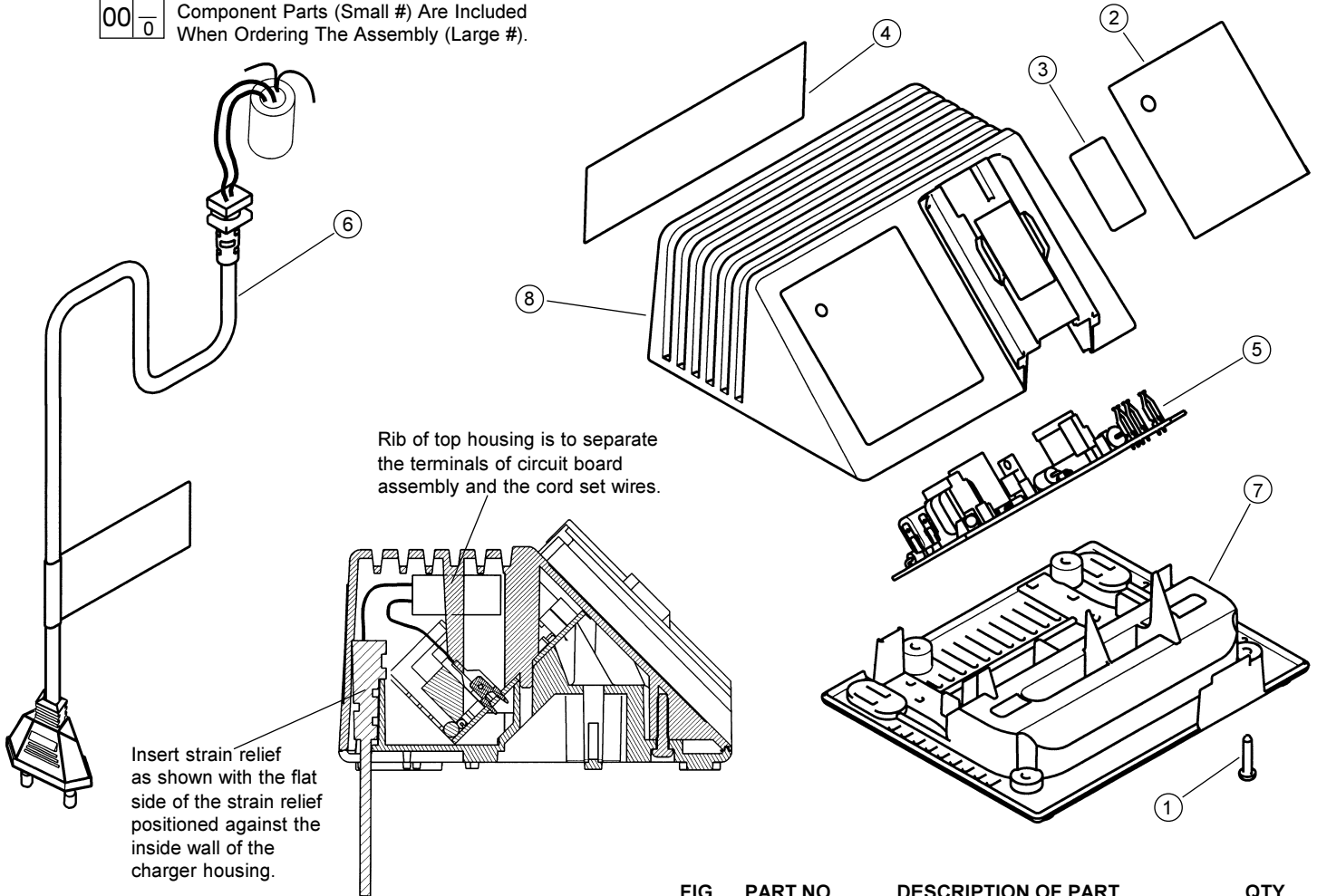
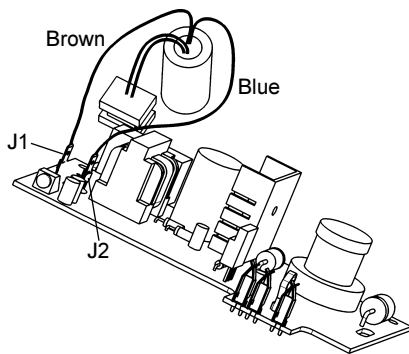


FIG.	PART NO.	DESCRIPTION OF PART	QTY
1	-----	6-32 x 11/16" Pan Hd. Slit. PT T-10	(4)
2	-----	Logo Label	(1)
3	-----	Terminal Warning Label	(1)
4	-----	Nameplate	(1)
5	-----	Circuit Board Assembly	(1)
6	22-64-3315	Cordset Assembly (Europe)	(1)
6a	22-64-3325	Cordset Assembly (Australia)	(1)
7	-----	Bottom Housing	(1)
8	-----	Top Housing	(1)

FIG. NOTES

- 5,8 Fully seat circuit board assembly into top housing, aligning the bosses.
- 5,8 Circuit board battery clips are to be fully inserted into battery port of top housing.
- 5,6 Cord set terminals are to be fully seated on mating terminals of printed circuit board assembly and perpendicular to printed circuit board surface.
- 6,8 Cord set to be free from conductor twists and cord crossover prior to installation of strain relief into top housing.

WIRING INSTRUCTIONS



Connect brown conductor of cordset assembly to terminal marked "J1" on circuit board assembly.

Connect blue conductor of cordset assembly to terminal marked "J2 blue" on circuit board assembly.