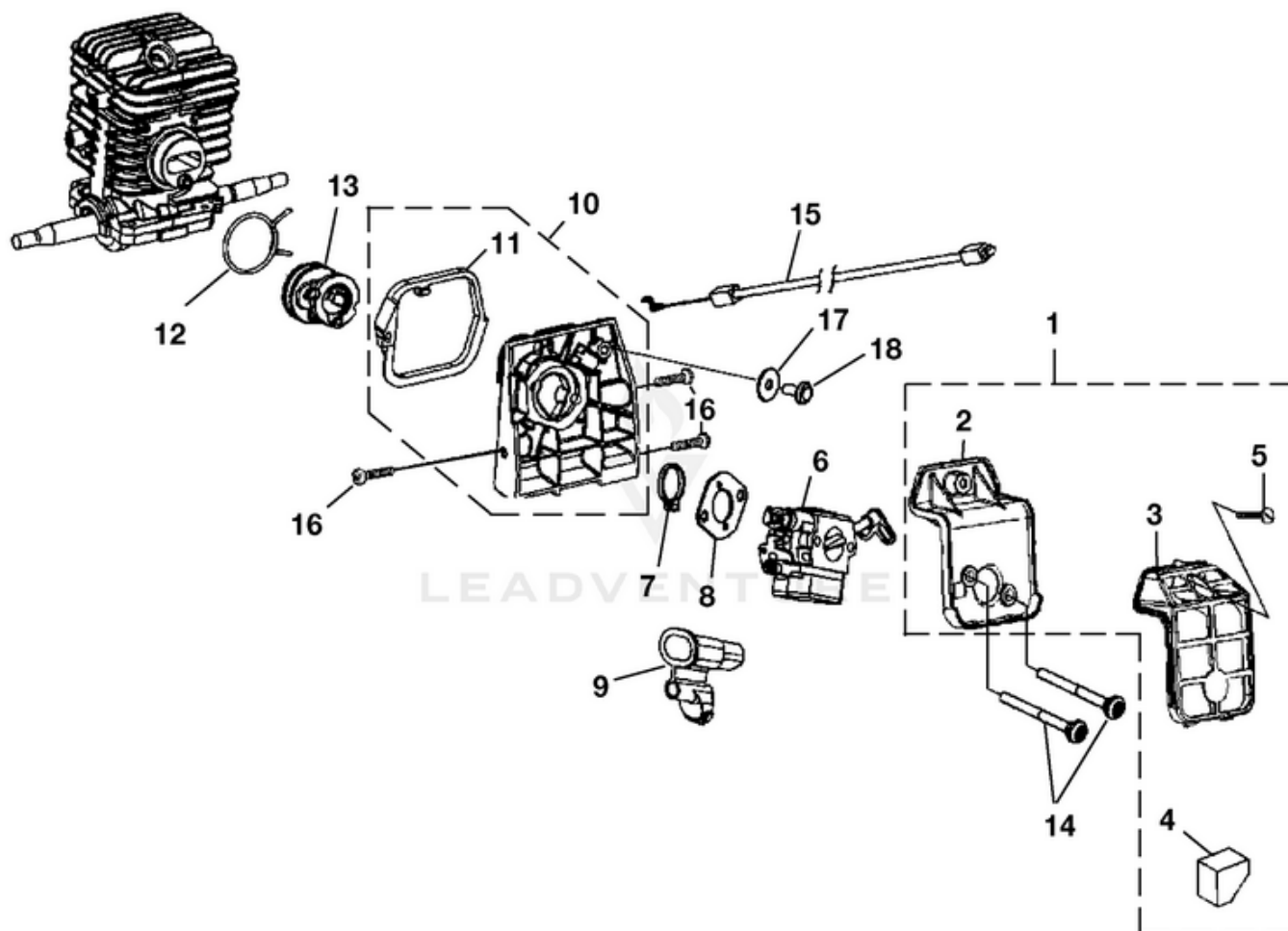


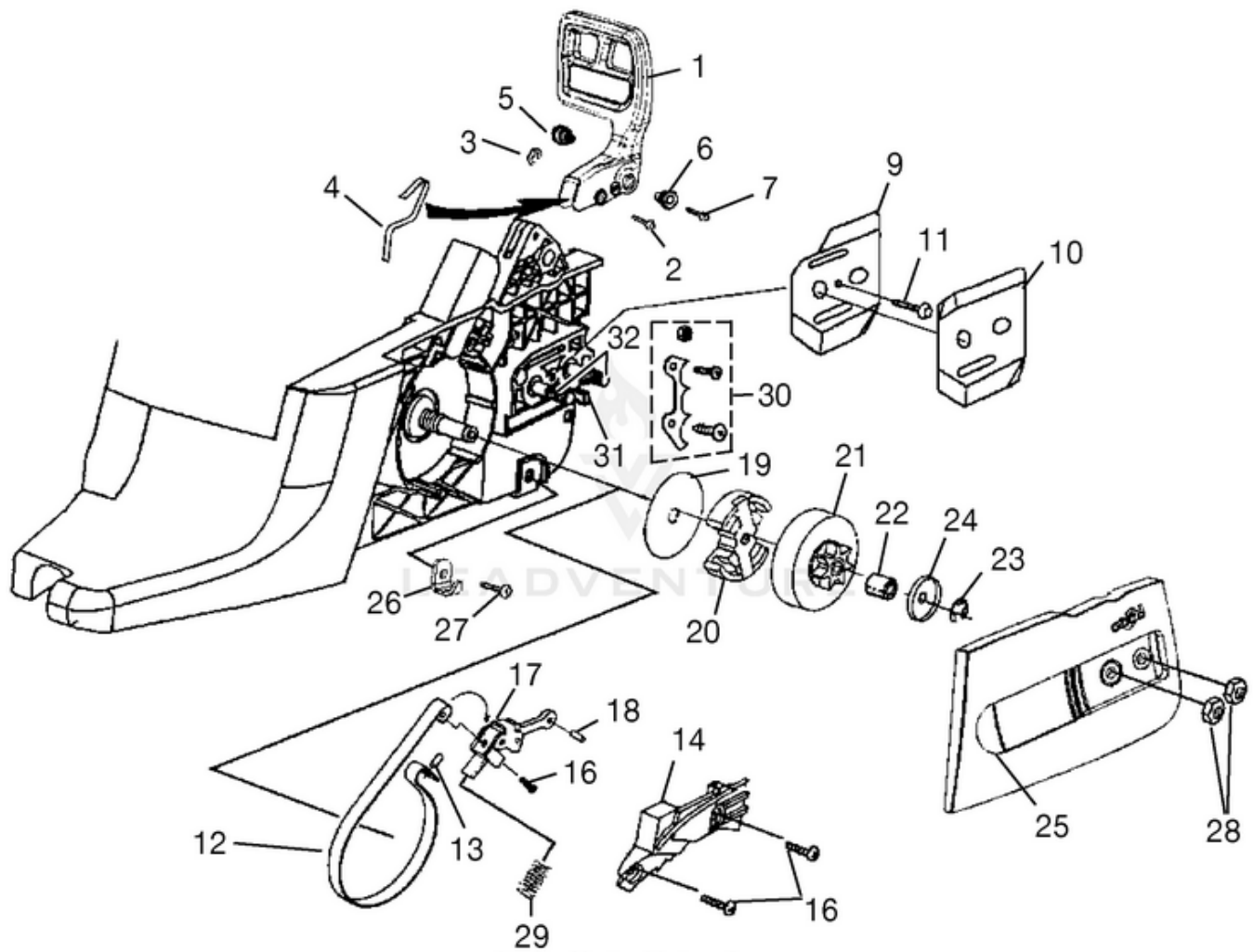
45cc Chain Saw UT-10946 10946-UT 45cc Chain Saw UT-10946 45cc Chain Saw - Carburetor - Air Filter



Rendered by LeadVenture, Inc.

Ref #	Part #	Description	Qty
1	UP08095A	Air Filter Kit	1
2	PA01284	Air Filter Base	1
3	PS02798	Air Filter Cover	1
4	PS05070	Pre Filter	1
5	82617	Screw-Slotted Pan Hd.(8-16 x 5/8")	1
6	UP08662A	Carburetor Assembly	1
7	PS04375	Plate-Carburetor	1
8	PS05105	Gasket-Carburetor	1
9	PS04371	Grommet-Carburetor	1
10	UP07896A	Adaptor-Carburetor	1
11	PS04374	Seal-Carb Adaptor	1
12	PS04309	Clamp-Wire	1
13	PS02794	Intake Boot	1
14	PS04446	Screw 10-32 x 1.75	2
15	UP07868A	Throttle Cable	1
16	82563	Screw-Torx	3
17	12789	Washer, Retaining	1
18	82623	Screw	1

45cc Chain Saw UT-10946 10946-UT 45cc Chain Saw UT-10946 45cc Chain Saw - Clutch - Chain Brake - Drive Case
Cover

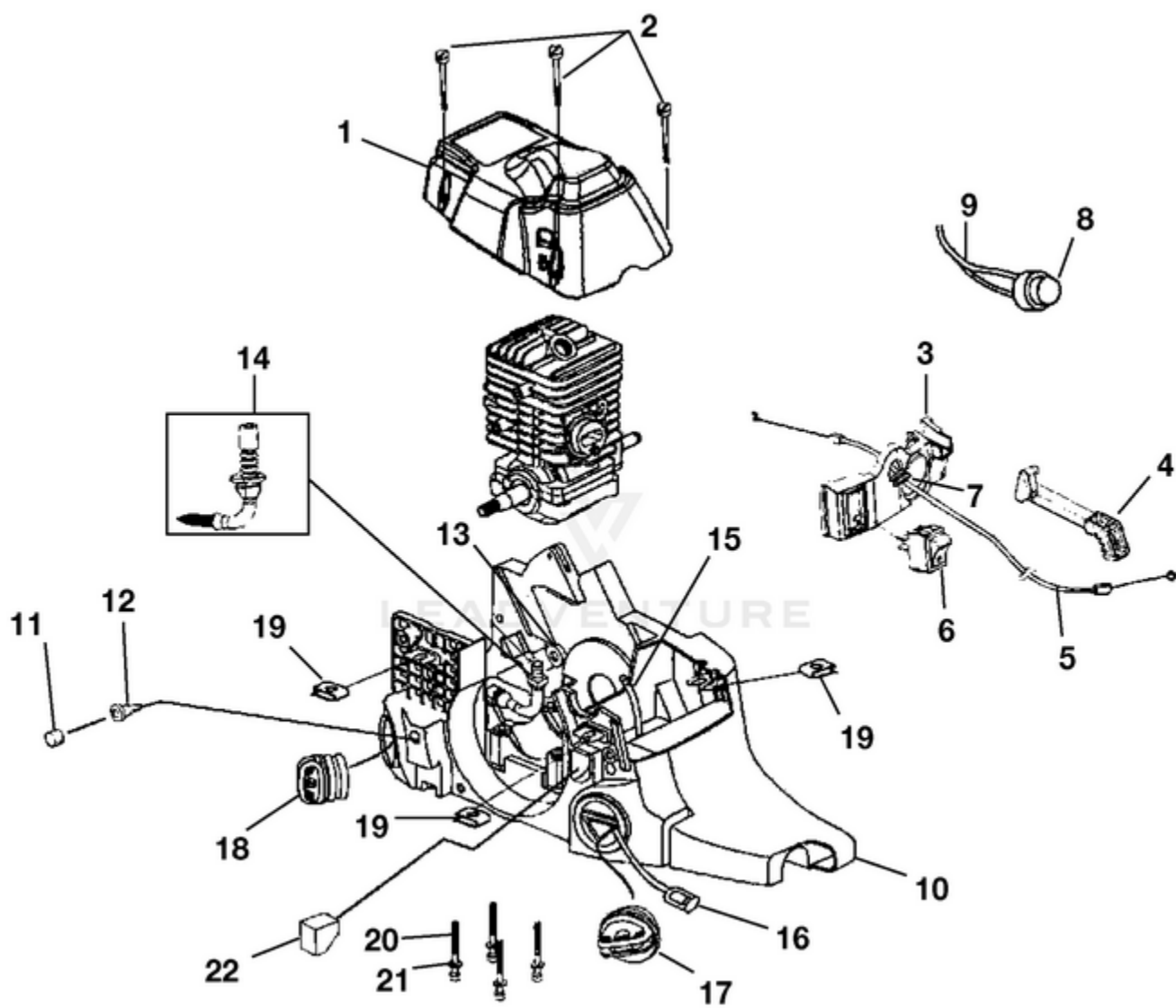


Rendered by LeadVenture, Inc.

Ref #	Part #	Description	Qty
1	PS04726	Hand Guard	1
2	07580	Hand Guard Actuating Pin	1
3	69599	Retaining Ring	1
4	PS04955	Spring, Handguard	1
5	07393	Pivot, L.H.	1
6	07392	Pivot, R.H.	1
7	82624	Screw, Hex Socket Hd. (8-32 x 5/8")	1
9	07404A	Plate, Guide Bar	1
10	07405A	Plate, Guide Bar	1
11	82513	Screw, Thread Form (6-19 x 1/2")	1
12	985030001	Chain Brake Band	1
13	06672	Pin, Roll	1
14	985021001	Cover, Chain Brake	1
16	82623	Screw, Pan Hd. (8-16 x .320)	3
17	984897001	Chain Brake Link	1
18	95395A	Pin, Roll	1
19	04940	Thrust Washer	1
20	984894001	Clutch & Hardware	1
21	984640001	Sprocket, Drum (.325 Pitch)	1
22	PS04669	Bearing, Needle	1
23	08981	Ring, Retaining	1
24	04939A	Washer, Cupped	1
25	PA01106	Drive Case Cover	1
26	PS02928	Chain Catcher	1
27	82541	Screw, Thread Form (10-24 x 1/2")	1
28	81196	Nut, Hex	2
29	985240001	Spring, Compression	1
30	UP08685A	Bumper Spike Kit	1
31	UP08000A	Adjusting Pin (UT10927 and UT10946)	1
	985250001	Chassis Kit	1
	985030001	Brake Band	1

Ref #	Part #	Description	Qty
	985021001	Cover, Chain Brake	1
	82623	Screw	3
	985240001	Spring	1
	985028001	Chassis	1
32	PS04881	Bar Guide Bolt	2

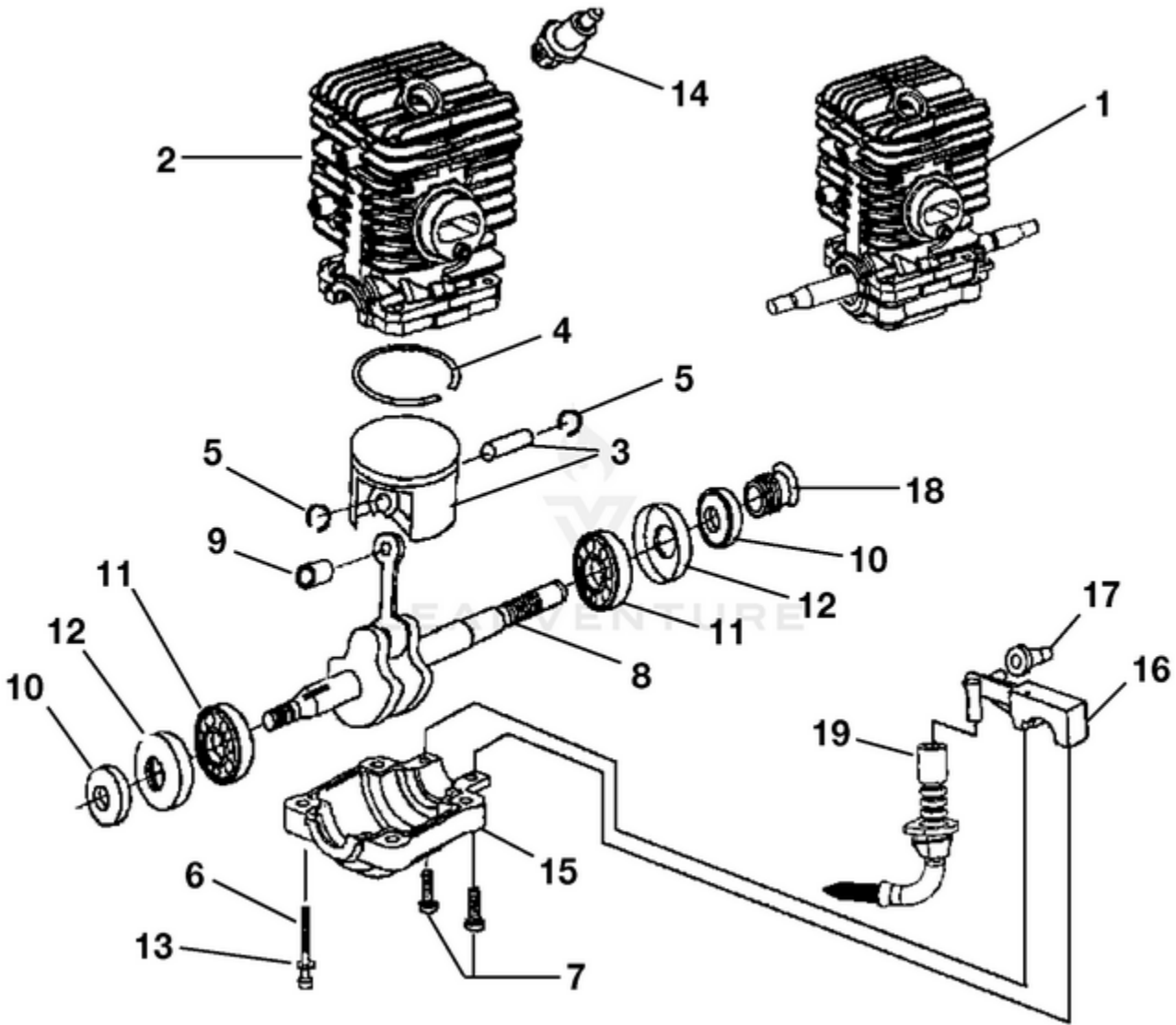
45cc Chain Saw UT-10946 10946-UT 45cc Chain Saw UT-10946 45cc Chain Saw - Engine Housing - Fuel Tank - Oil Tank



Rendered by LeadVenture, Inc.

Ref #	Part #	Description	Qty
1	UP08663A	Cylinder Cover Kit (UT10946 & A) w/safety decal (45cc 18")	1
1	UP08709	Cylinder Cover Kit (UT10942 & A) w/safety decal (45cc 20")	1
1	UP08711A	Cylinder Cover Kit (UT10927 & A) w/safety decal (38cc 16")	1
2	07597	Screw-Slotted Pan Hd.	3
3	PS06119	Control Panel	1
4	PA01644	Rod, Choke	1
5	UP07868A	Throttle Cable	1
6	PS06163	Switch, Rocker	1
7	07587	Grommet - Split	2
8	PS06164	Primer Bulb	1
9	0745410	Rubber Tubing (5 1/2")	1
10	985028001	Chassis	1
11	07403	Element, Filter (Bronze)	2
12	03134	Duck Bill Valve	2
13	06841	Oil Outlet Grommet	1
14	PA01037	Oil Intake Tube w/Filter	1
15	0745434	Rubber Tubing (8 1/2")	1
16	PS03380	Fuel Filter	1
17	PA01645	Fuel Cap w/ Retainer	1
18	PA01646	Oil Cap w/ Retainer	1
19	07598	Speed Nut ("U-Type")	3
20	82527	Screw, Cap-Socket Hd. (10-24 x 2")	4
21	84008	Washer	4
22	PS05070	Pre Filter	1
	UP08669A	Decal Kit (45cc 18")	
	UP08708A	Decal Kit (38cc 16")	
	UP08710A	Decal Kit (45cc 20")	

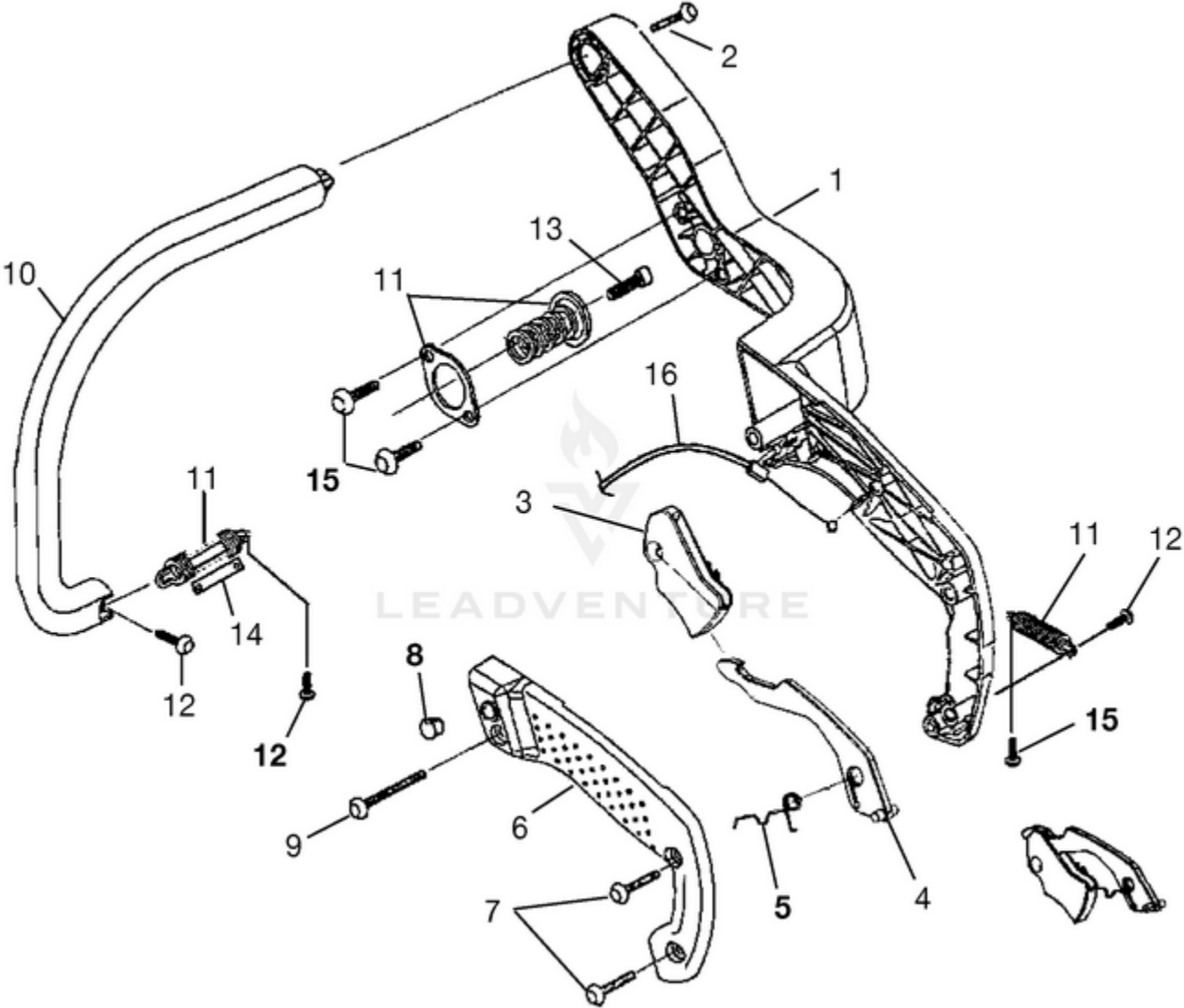
45cc Chain Saw UT-10946 10946-UT 45cc Chain Saw UT-10946 45cc Chain Saw - Engine Internal - Oil Pump



Rendered by LeadVenture, Inc.

Ref #	Part #	Description	Qty
1	UP08656A	Short Block, Complete (45cc)	1
2	UP08657A	Cylinder Kit (45cc)	1
	06839	Gasket, Muffler	1
3	UP00130A	Piston & Pin (45cc)	1
4	09082	Piston Ring	1
5	64813	Ring, Retaining	2
6	82527	Screw, Cap-Socket Hd. (10-24 x 2")	4
7	PS04989	Screw, Pan Hd, Plastite (8-32 x 5/8")	2
8	UP04165A	Crankshaft & Rod Assy	1
9	PS04921	Bearing, Needle	1
10	04920	Shaft Seal	2
11	A04931A	Bearing & Rubber Case	2
12	04919	Bearing Case	2
13	84008	Washer	4
14	PS06216	USE 870174001	1
15	09097	Lower Crankcase	1
16	UP06602	Oil Pump Kit	1
17	06841	Grommet, Oil Outlet	1
18	06847	Left Hand Worm	1
19	PA01037	Oil Intake Tube w/Filter	1
7	PS04989	Screw, Pan Hd, Plastite (8-32 x 5/8")	2

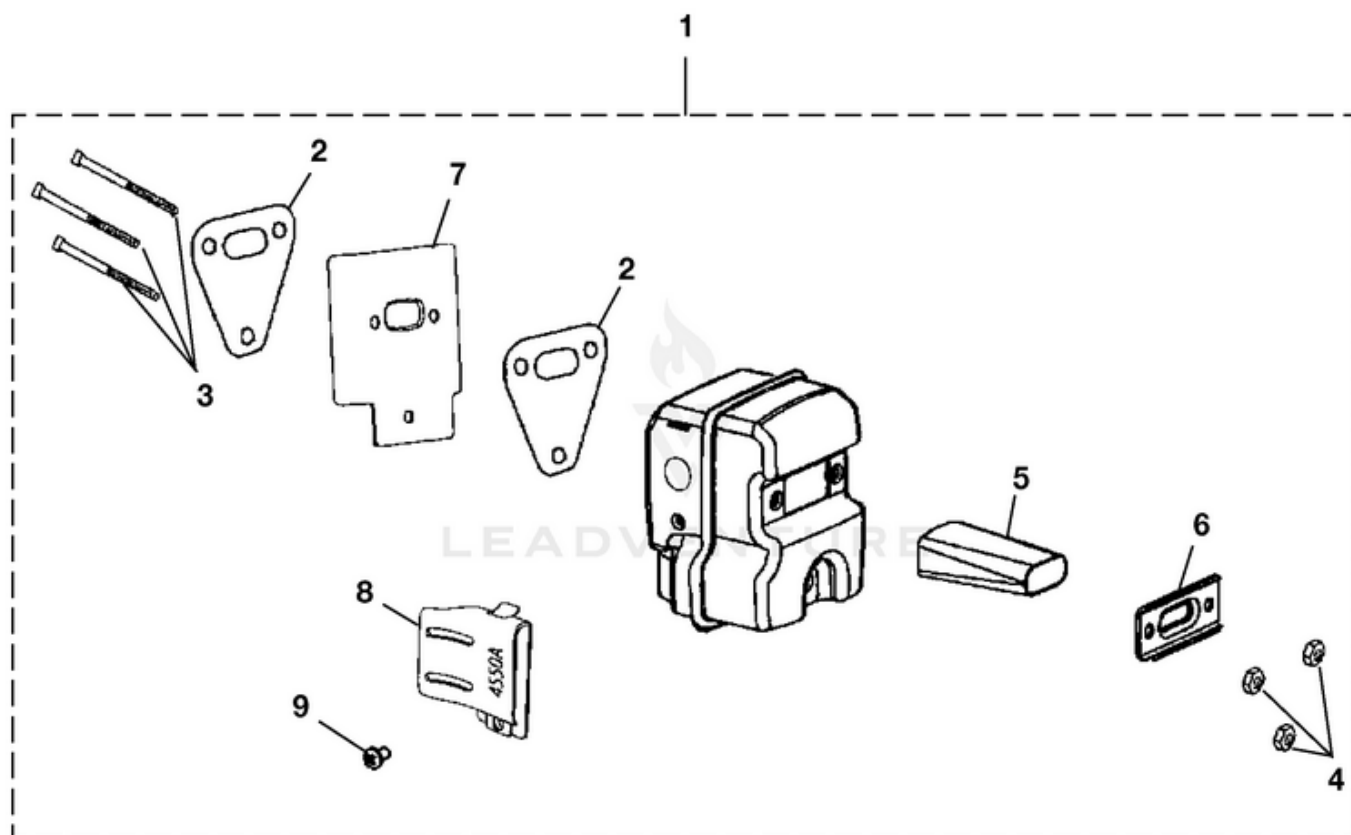
45cc Chain Saw UT-10946 10946-UT 45cc Chain Saw UT-10946 45cc Chain Saw - Handles



Rendered by LeadVenture, Inc.

Ref #	Part #	Description	Qty
1	UP08098A	Rear Handle Kit	1
2	82615	Screw-Pan Hd. (12-14 x 1 1/2")	1
3	PS06110	Trigger, Throttle	1
4	PS06111	Throttle Lock Out	1
5	PS04914	Torsion Spring	1
6	UP08111A	Handle Cover Kit	1
7	82563	Screw, Thread Form (10-14 x 3/4")	2
8	PS04932	Plug-Plastic	1
9	82622	Screw, Thread Form (10-14 x 1 3/8")	1
10	UP07862A	Front Handle Kit	1
2	82615	Screw-Pan Hd. (12-14 x 1 1/2")	1
11	UP08007A	Isolator Kit	1
12	82621	Screw, Truss Hd. (10-14 x 5/8)	3
13	82597	Screw, Truss Hd. (10-24 x 5/8")	1
14	01812A	Limiter, Isolator	1
15	82541	Screw, Thread Form (10-14 x 1/2")	3
16	UP07868A	Throttle Cable	1

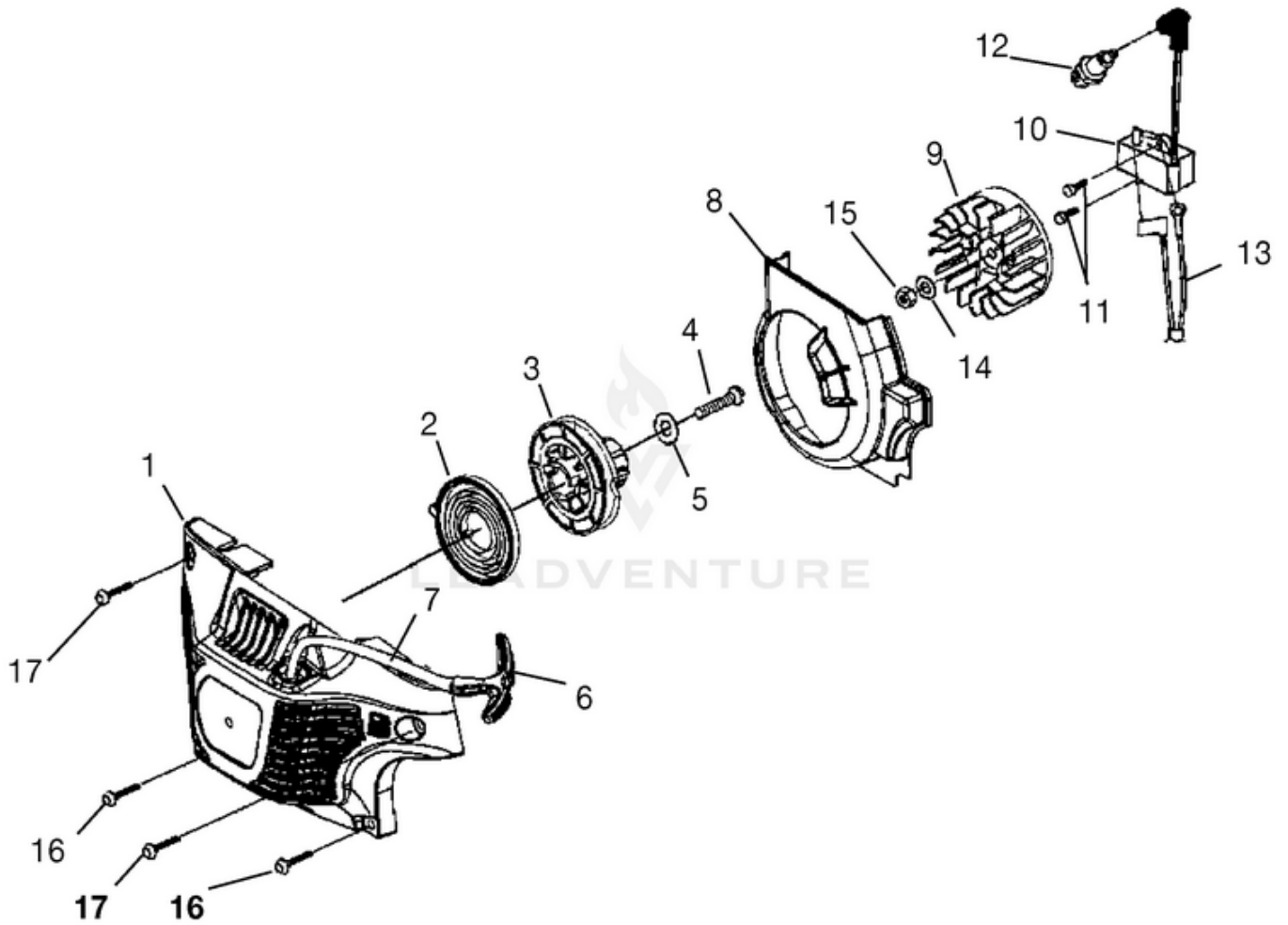
45cc Chain Saw UT-10946 10946-UT 45cc Chain Saw UT-10946 45cc Chain Saw - Muffler



Rendered by LeadVenture, Inc.

Ref #	Part #	Description	Qty
1	UP08654A	Muffler Kit	1
2	900848001	Muffler Gasket	2
3	PS04525	USE 660626001	3
4	81206	Nut-Locking Hex (10-32)	3
5	PS04350	Screen, Spark	1
6	PS04147	Screen Retainer	1
7	PS06121	Plate-Muffler	1
8	PS06075	MUFFLER DEFLECTOR	1
9	95922	Screw	1

45cc Chain Saw UT-10946 10946-UT 45cc Chain Saw UT-10946 45cc Chain Saw - Starter - Ignition



Rendered by LeadVenture, Inc.

Ref #	Part #	Description	Qty
1	984687001	USE 120900019	1
2	PA01330	Spring & Container	1
3	PS03882	Pulley, Starter	1
4	82621	Screw, Thread Form (10-14 x 5/8")	1
5	94062	Washer, Retaining	1
6	PS06114	ERGO GRIP RYOBI YELLOW	1
7	9789901	Rope, Starter 46"	1
8	PS03984	Baffle, Fan Housing	1
9	UP05850A	Rotor w/ Starter Pawl	1
10	U08653A	Ignition Kit	1
11	82575	Screw, Thread Form (8-32 x 5/8")	2
12	PS06216	USE 870174001	1
13	PA01311	Ignition Switc Harness	1
	PA01664	Ignition Switch Harness	1
14	PS84065	Washer, Flat	1
15	985730001	Nut, Jam	1
16	82620	Screw, Truss Hd. (10-14 x 7/8")	2
17	82621	Screw, Truss Hd. (10-14 x 5/8")	2

No
Diagram
Available

LEADVENTURE
Parts List
Only

Ref #	Part #	Description	Qty
	PSO6132	16" Guide Bar	
	PSO6131	18" Guide Bar	
	PSO6301	20" Guide Bar	
	PSO6136	16" Chain	
	PSO6135	18" Chain	
	PSO6134	20" Chain	
	PS24823	Sealant Silicon	
	0745499	Rubber tubing (10')	
	09207	Wrench - Combination	
	18416	Digital Tachometer	
	18453	Grease, Multi-purpose	
	94194	Compression Tester	
	1856601	Bit, Torx T27	
	UP08681A	Carry Case	
	UP08685A	Bumper Spike Kit	
	UP08000A	Adjusting Pin Kit	
	PS06206	Operator's Manual:UT10946 and UT10946A	
	PS06311	Operator's Manual:UT10927A	
	PS06304	Operator's Manual:UT10942A	