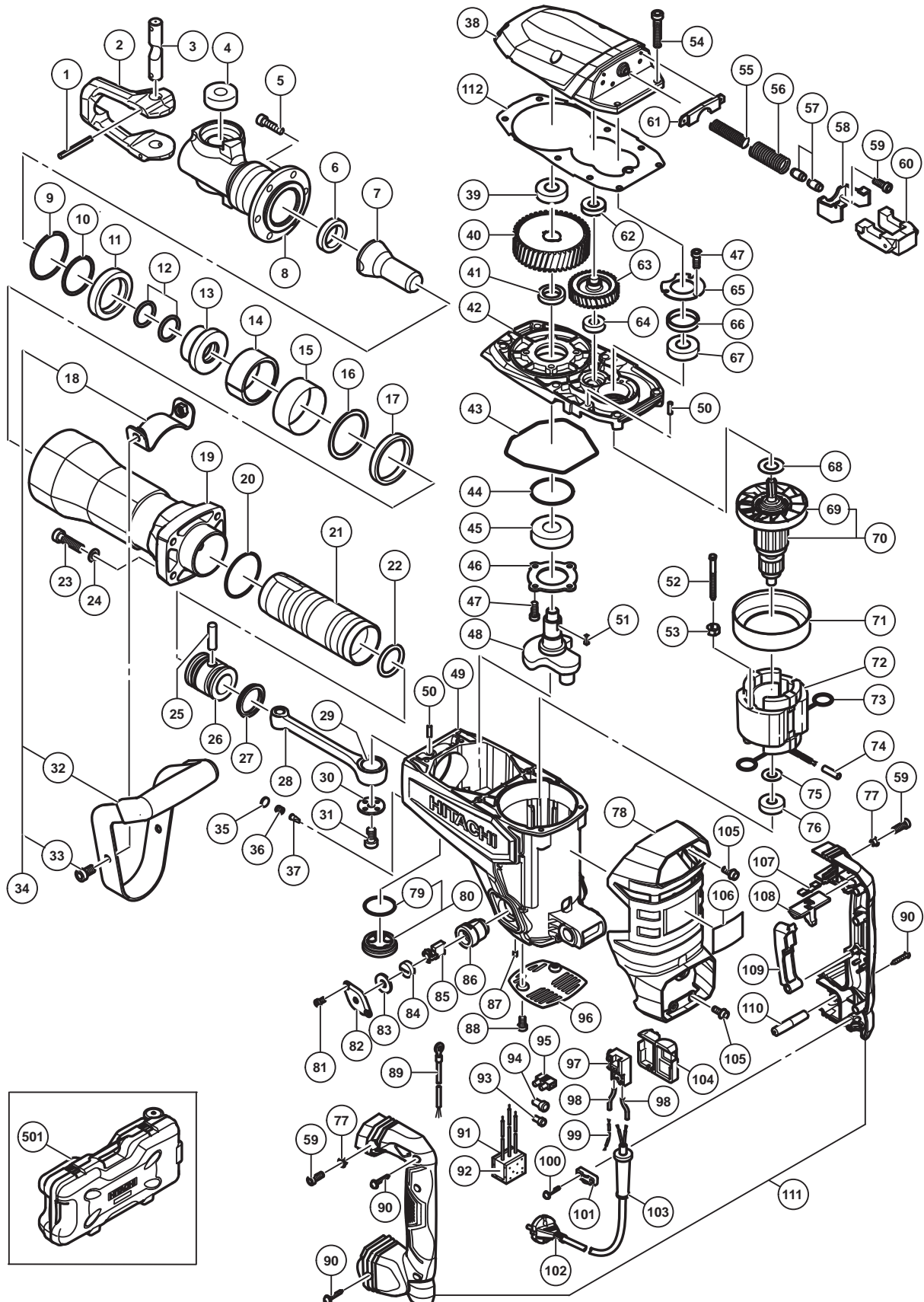


ELECTRIC TOOL PARTS LIST

DEMOLITION HAMMER Model H 65SD3

2016-8-19

(E1)



PARTS

H 65SD3

ITEM NO.	CODE NO.	DESCRIPTION	NO. USED	REMARKS
1	994416	ROLL PIN D6 X 55	2	
2	337040	RETAINER	1	
3	337041	LEVER PIN	1	
4	337039	RETAINER DAMPER (A)	2	
5	306437	NYLOCK HEX. SOCKET HD. BOLT M8 X 30	6	
6	996369	DAMPER (B)	1	
7	339702	SECOND HAMMER	1	
8	339701	FRONT COVER	1	
9	998428	O-RING (C)	1	
10	339684	O-RING (B)	1	
11	998433	DAMPER (A)	1	
12	339681	O-RING	2	
13	339680	SHANK SLEEVE	1	
14	339679	MOUTH	1	
15	956962	MOUTH COVER	1	
16	370894	MOUTH WASHER (A)	1	
17	370893	URETHANE RING (A)	1	
18	320374	HANDLE STAY (W/NUT)	1	
19	339678	CYLINDER CASE	1	
20	956996	O-RING (1AS-60)	1	
21	339677	STRIKER	1	
22	998414	O-RING (A)	1	
23	323734	NYLOCK HEX. SOCKET HD. BOLT M8 X 40	4	
24	323212	BOLT WASHER M8 (BLACK)	4	
25	944928	PISTON PIN	1	
26	339676	PISTON	1	
27	998415	OIL SEAL (A)	1	
28	998434	CONNECTING ROD ASS'Y	1	INCLUD.29
29	944921	NEEDLE BEARING (NTN 8E-NK 18/20 RDO)	1	
30	956955	CRANK WASHER	1	
31	996364	SEAL LOCK HEX. SOCKET HD. BOLT M8 X 16	1	
32	306166	GRIP	1	
33	320375	NYLOCK HEX. SOCKET HD. BOLT M8 X 16	2	
34	306165	SIDE HANDLE ASS'Y	1	INCLUD.18,32,33
35	324544	FELT PACKING (B)	1	
36	338313	CAP SCREW	1	
37	995396	VALVE	1	
38	339674	GEAR COVER	1	
39	6302VV	BALL BEARING 6302VVCMP2L	1	
40	339672	FINAL GEAR	1	
41	944915	DISTANCE RING (B)	1	
42	339669	INNER COVER	1	
43	323725	SEAL RING	1	
44	331244	O-RING	1	
45	6205DD	BALL BEARING 6205DDCMP2L	1	
46	956949	BEARING COVER	1	
47	990079	SEAL LOCK HEX. SOCKET HD. BOLT M5 X 16	7	
48	339671	CRANK SHAFT	1	
49	339665	HOUSING ASS'Y	1	INCLUD.86,87
50	944918	PIN D5 X 15.8	2	

PARTS

H 65SD3

ITEM NO.	CODE NO.	DESCRIPTION	NO. USED	REMARKS
51	931008	FEATHER KEY 4 X 4 X 12	1	
52	960251	HEX. HD. TAPPING SCREW D5 X 65	2	
53	956764	SPECIAL WASHER	2	
54	322494	SEAL LOCK HEX. SOCKET HD. BOLT M6 X 40	6	
55	339697	HANDLE SPRING (B)	1	
56	339696	HANDLE SPRING (A)	1	
57	310124	HANDLE DAMPER	1	
58	339695	HANDLE GUIDE	1	
59	990079	SEAL LOCK HEX. SOCKET HD. BOLT M5 X 16	4	
60	339698	HANDLE WEIGHT	1	
61	339694	HANDLE STOPPER	1	
62	6201VV	BALL BEARING 6201VV	1	
63	339673	COUNTER GEAR	1	
64	6001VV	BALL BEARING 6001VV	1	
65	944911	BEARING COVER (A)	1	
66	339670	DISTANCE RING (A)	1	
67	6203DD	BALL BEARING 6203DDCMPS2L	1	
68	333222	BEARING WASHER	1	
69	333196	FAN	1	
* 70	361024C	ARMATURE ASS'Y 110V	1	INCLUD.69
* 70	361024U	ARMATURE ASS'Y 120V	1	INCLUD.67,68,69,75,76
* 70	361024D	ARMATURE ASS'Y 127V	1	INCLUD.69
* 70	361024E	ARMATURE ASS'Y 220V-230V	1	INCLUD.69
71	339668	FAN GUIDE	1	
* 72	340928C	STATOR ASS'Y 110V	1	INCLUD.73
* 72	340928G	STATOR ASS'Y 120V	1	INCLUD.73
* 72	340928D	STATOR ASS'Y 127V	1	INCLUD.73
* 72	340928E	STATOR ASS'Y 220V-230V	1	INCLUD.73
* 72	340928H	STATOR ASS'Y 220V-230V	1	INCLUD.73 FOR BRA,PAN
73	945932	BRUSH TERMINAL	2	
74	322530	VINYL TUBE L55	1	
75	944954	BEARING WASHER	1	
76	6201DD	BALL BEARING 6201DDCMPS2L	1	
77	991711	DISTANCE PIECE (B)	2	
78	339692	BACK COVER	1	
79	980717	O-RING (S-38)	1	
80	990945	OIL CAP ASS'Y	1	INCLUD.79
81	877838	SEAL LOCK HEX. SOCKET HD. BOLT M4 X 8	4	
82	323727	CAP COVER	2	
83	944960	CAP RUBBER	2	
84	940540	BRUSH CAP	2	
85	999086	CARBON BRUSH (AUTO STOP TYPE) (1 PAIR)	2	
86	956984	BRUSH HOLDER	2	
87	938477	HEX. SOCKET SET SCREW M5 X 8	2	
88	991690	SEAL LOCK HEX. SOCKET HD. BOLT M5 X 12	2	
* 89	994190	INTERNAL WIRE	1	FOR EUROPE,GBR,RUS
90	307028	TAPPING SCREW (W/FLANGE) D4 X 25 (BLACK)	5	
* 91	930153	SUPPORT (B)	1	FOR EUROPE,GBR,RUS
* 92	370895	NOISE SUPPRESSOR	1	FOR EUROPE,GBR,RUS
* 93	959140	CONNECTOR 50091 (10 PCS.)	1	FOR EUROPE,GBR,RUS

STANDARD ACCESSORIES

H 65SD3

ITEM NO.	CODE NO.	DESCRIPTION	NO. USED	REMARKS
501	339664	CASE (PLASTIC)	1	

OPTIONAL ACCESSORIES

ITEM NO.	CODE NO.	DESCRIPTION	NO. USED	REMARKS
601	985231	COLD CHISEL 520MM (HEX. SHANK TYPE)	1	
602	985232	CUTTER W75 X 520MM (HEX. SHANK TYPE)	1	
603	985233	SCOOP 546L (HEX. SHANK TYPE)	1	
604	996372	BULL POINT 410MM (HEX. SHANK TYPE)	1	
605	996373	COLD CHISEL 410MM (HEX. SHANK TYPE)	1	
606	996374	CUTTER W75 X 410MM (HEX. SHANK TYPE)	1	
607	336375	WHEEL SET	1	
608	337337	WHEEL SHAFT SET	1	
609	337338	LATCH SET (2 PCS.)	2	
610	402616	HAMMER TROLLEY	1	
611	980927	GREASE FOR HAMMER.HAMMER DRILL (500G)	1	
612	981840	GREASE (A) FOR HAMMER.HAMMER DRILL (30G)	1	
613	308471	GREASE FOR HAMMER.HAMMER DRILL (70G)	1	