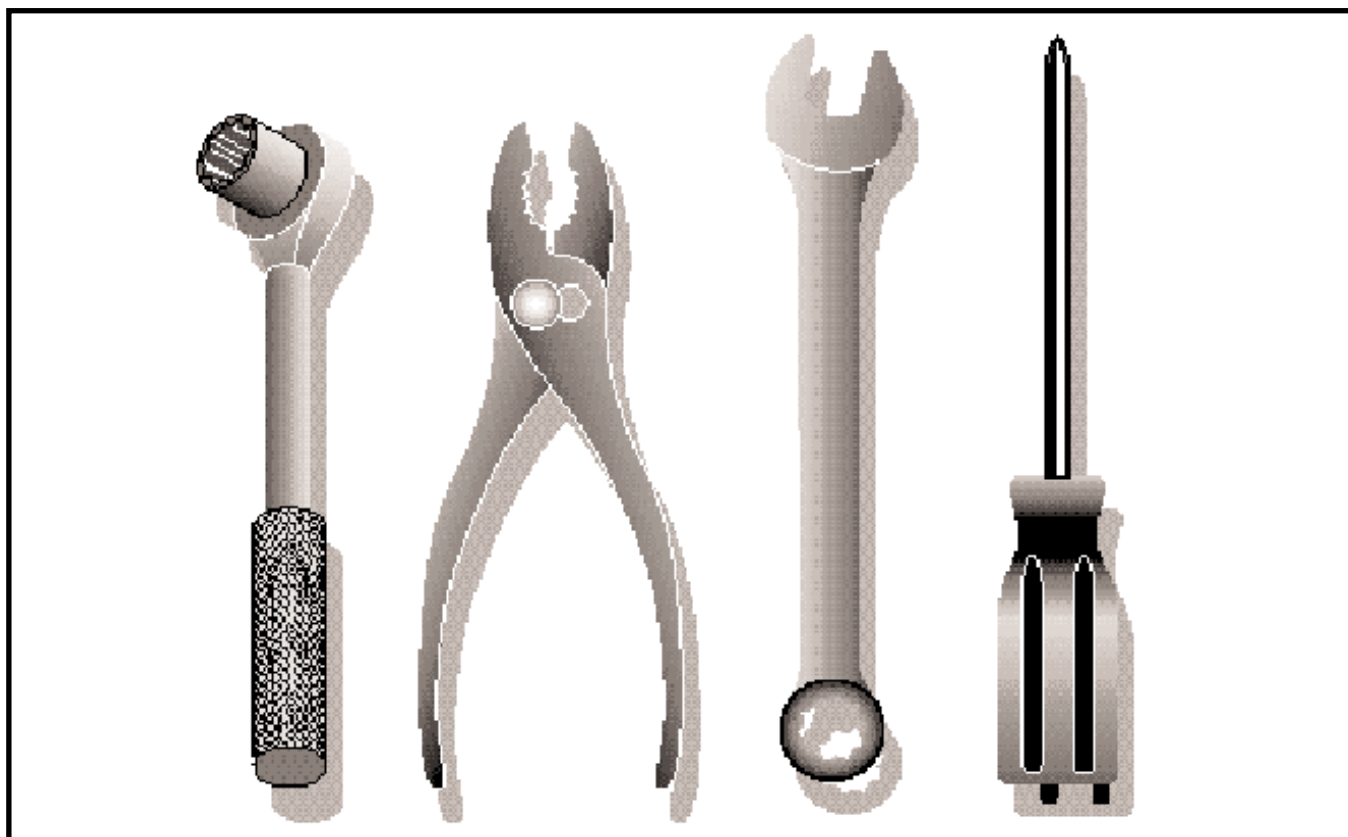
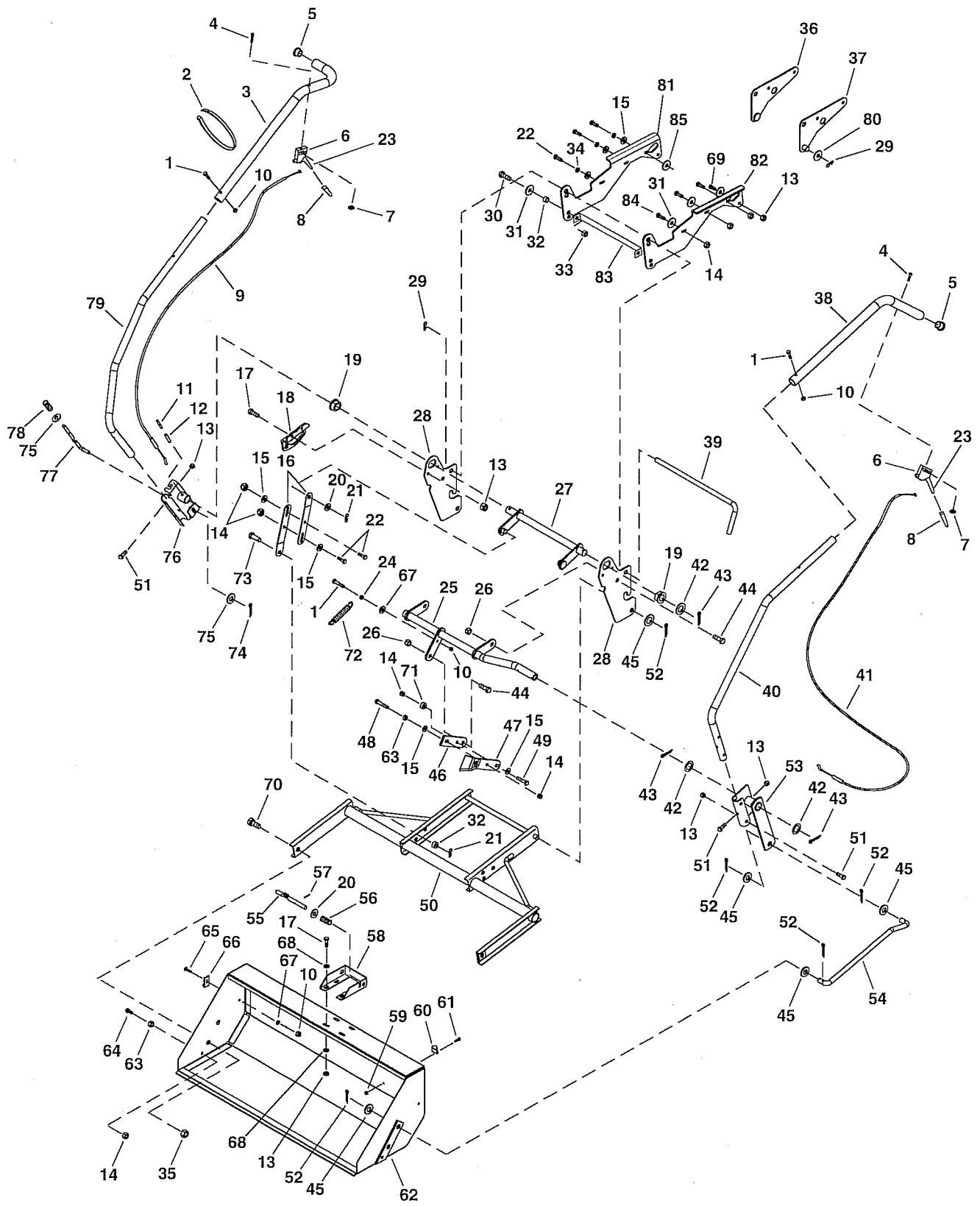


Front End Scoop for Tractors

## Front Scoop (45-0403)



# REPAIR PARTS FOR MODEL 45-0403 FRONT END SCOOP



## REPAIR PARTS FOR MODEL 45-0403 FRONT END SCOOP

REF NO.	PART NO.	QTY	DESCRIPTION	REF NO.	PART NO.	QTY	DESCRIPTION
1	1509-69	3	Hex Bolt, 1/4-20 x 1-3/4" (Grade 5)	45	R19212016	6	Flat Washer, 5/8" x 1-1/4" x 16 Ga.
2	726-0178	6	Cable Tie	46	25362	1	Tilt Bracket Extension Strap
3	49265	1	Lift Handle Extension	47	64983	1	Tilt Bracket
4	49266	2	Oval Screw, 10-24 x 1-1/2"	48	HA6441	1	Hex Bolt, 3/8-16 x 2" (Grade 5)
5	47674	2	Plastic Plug, 1-1/4" O.D. Tube	49	41576	1	Hex Bolt, 3/8-16 x 1-3/4" (Grade 5)
6	47554	2	Trigger Housing Assembly	50	64963	1	Lift Frame Assembly
7	712-0127	2	Square Nut, #10-24	51	43084	5	Hex Bolt, 5/16-18 x 1-3/4" (Grade 5)
8	47317	2	Grip, Black	52	43010	6	Cotter Pin, 1/8" x 1-1/4"
9	47555	1	Cable, Lift	53	64968	1	Dump Pivot Bracket
10	47189	5	Nylock Nut, 1/4"	54	49273	1	Dump Control Rod
11	47369	1	Roll Pin, 3/16" x 1-3/4"	55	49268	1	Dump Control Pin
12	47368	1	Roll Pin, 5/16" x 1-3/4"	56	48905	1	Compression Spring
13	47810	14	Nylock Nut, 5/16-18	57	46055	1	Spring Pin, 1/8" x 1"
14	HA21362	14	Nylock Nut, 3/8-16	58	25335	1	Pin Stop Bracket
15	43070	12	Flat Washer, 3/8"	59	47171	1	Nylock Nut, #10-32
16	25350	4	Lift Strap	60	HA23761	1	Hose Clamp
17	43063	7	Hex Bolt, 5/16-18 x 1" (Grade 5)	61	43346	1	Truss-Head Bolt #10-32 x 5/8"
18	25343	1	Lift Bracket	62	64962	1	Bucket Assembly
19	741-0192	2	Flange Bearing with Flats	63	43015	3	Hex Nut, 3/8-16
20	R19171616	4	Flat Washer, 1/2" x 1" (Small)	64	43087	2	Hex Bolt, 3/8-16 x 1-1/4" (Grade 5)
21	43055	4	Hairpin Cotter, 3/32" x 1.8"	65	44950	2	Carriage Bolt, 1/4-20 x 3/4" (Grade 5)
22	43001	10	Hex Bolt, 3/8-16 x 1" (Grade 5)	66	25331	2	Tilt Stop Bracket
23	63755	2	Trigger Assembly	67	736-0142	3	Flat Washer, 1/4"
24	43178	1	Hex Nut, 1/4-20	68	43081	8	Flat Washer, 5/16"
25	64964	1	Tilt Anchor Assembly	69	44326	2	Carriage Bolt, 5/16" x 1" (Grade 5)
26	48115	3	Nylock Jam Nut, 1/2-13	70	710-0367	2	Hex Bolt, 5/8-11 x 1-1/2" (Grade 5)
27	63675	1	Lift Arm Assembly	71	25408	1	Spacer, 3/8" I.D. x 7/8" O.D. x 3/8"
28	25510	2	Mounting Bracket		23625	1	Spacer, 3/8" I.D. x 5/8" O.D. x 1/4"
29	43343	3	Hairpin Cotter, 3/32" x 2-5/16"	72	43000	1	Extension Spring
30	R74780828	2	Hex Bolt 1/2-13 x 1-3/4" (Grade 5)	73	44062	2	Clevis Pin, 1/2" x 1"
31	R19172410	8	Flat Washer, 1/2" x 1-1/2" (Large)	74	142	1	Cotter Pin, 1/8" x 3/4"
32	24817	4	Spacer, 0.52" x 0.75" x 0.5"	75	R19131316	2	Flat Washer, 3/8" x 13/16" x 1/16"
33	712-3083	2	Nylock Nut, 1/2-13	76	63773	1	Index Bracket Assembly
34	43003	6	Lock Washer, 3/8"	77	48049	1	Index Rod
35	712-0261	2	Nylock Nut, 5/8-11	78	732-0306	1	Spring, Compression
36	63568	1	Right (Short) Side Plate	79	49264	1	Lift Handle Tube
37	63569	1	Left (Short) Side Plate	80	43009	2	Flat Washer, 3/4"
38	49270	1	Dump Handle Tube Extension	81	25562	1	Right (Long) Side Plate
39	47066	1	Attachment Rod	82	25563	1	Left (Long) Side Plate
40	49271	1	Dump Handle Tube	83	25722	1	Frame Brace
41	49483	1	Dump Control Cable	84	43350	6	Bolt, Carriage 3/8-16 x 1" (Grade 5)
42	43601	3	Washer, 1.59" x 1.032" x 0.60"	85	736-0235	2	Washer, .375" x 1.26" x .172"
43	43093	3	Cotter Pin, 1/8" x 1-1/2"		40121	1	Owner's Manual
44	710-0865	3	Hex Bolt, 1/2-13 x 1" (Grade 5)				

\* Purchase Common Hardware Locally



**Please do not return this product to the Store**

**For Missing Parts Or Questions on How to Assemble:**

1. Call Agri-Fab at 1-800-448-9282 Option # 1  
Monday through Friday, 7 am to 5 pm CST
2. Fax Agri-Fab at 217-728-2032 or email [info@agri-fab.com](mailto:info@agri-fab.com)

*Missing part shipments are normally shipped from the Agri-Fab factory within 24 hours zip code 61951. 1 to 5 days delivery for UPS.*

**For Replacement and/or Repair Parts:**

1. Call Agri-Fab at 1-800-448-9282 Option # 1  
Monday through Friday, 7 am to 5 pm CST
2. Visit Agri-Fab's website at <http://www.agri-fab.com> and view illustrated parts breakdowns and parts listing and purchase parts via our <http://www.speedepart.com> site online.