

SERVICE PARTS LIST

BUL. 54-00-0200

1750 WATT ALTERNATOR

REVISED BUL
6351-1

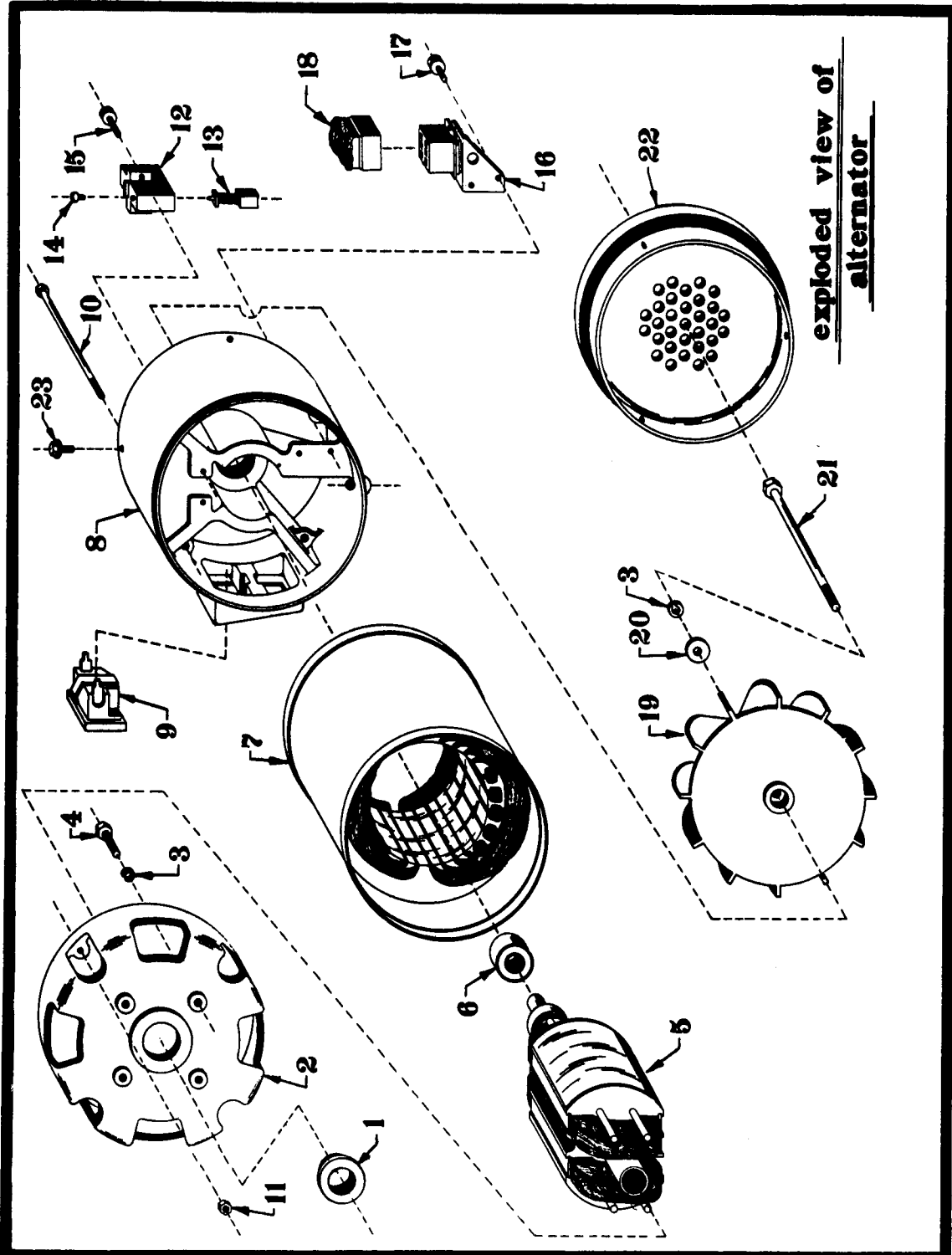
DATE
October '68

Catalog No. **4450**

Starting Serial No. **351-1001**

WIRING INSTR.
54-00-0220

Both Model and Serial No. must be furnished to obtain correct parts.



X92A-M-Ind-465-150



SERVICE PARTS LIST

BUL.

ALTERNATOR

<u>Item</u>	<u>Part No.</u>	<u>Description</u>	<u>Req'd</u>
1	44-90-0220	Adaptor Ring	1
2	42-04-0160	Adaptor Housing	1
3	06-97-2650	5/16 Lockwasher	5
4	06-75-0349	5/16 - 24 x 3/4 Lg. Hex. Hd. Capscrew	4
5	23-40-0150	Rotor Assembly (1750 Watt)	1
5	23-40-0140	Rotor Assembly (1250 Watt)	1
6	02-04-1545	Bearing	1
7	23-58-0160	Stator Assembly (1750 Watt)	1
7	23-58-0170	Stator Assembly (1250 Watt)	1
★ 8	43-76-0160	Rear Housing	1
9	23-33-0130	115 V. Outlet	2
10	06-75-0050	#10 - 32 x 6 1/8 Lg. Hex. Hd. Mch. Sc.	4
11	06-57-3000	#10 - 32 Lokut Hex. Nut	4
12	22-20-0220	Brush Holder	1
13	22-18-0340	Brush Assembly	2
14	06-81-8650	#6 - 32 x 1/4 Lg. Sems Rd. Hd. Mch. Sc.	2
15	06-81-6200	#8 - 32 x 5/8 Lg. Taptite Sc.	2
16	45-60-0190	Rectifier Support Assembly	1
17	06-81-4650	#10 - 32 x 3/8 Lg. Taptite Sc.	2
18	23-38-2550	Rectifier Assembly	1
19	22-84-0330	Fan	1
20	45-88-5261	1/4 Wrought Washer	2
21	06-75-0450	5/16 - 24 x 5 7/8 Lg. Hex. Hd. Capscrew	1
★ 22	42-92-0140	Fan Cover	1
23	06-75-2400	#10 - 32 x 1/2 Lg. Taptite Sc.	3



SERVICE PARTS LIST

BUL. 54-00-0210

ALTERNATOR BASE

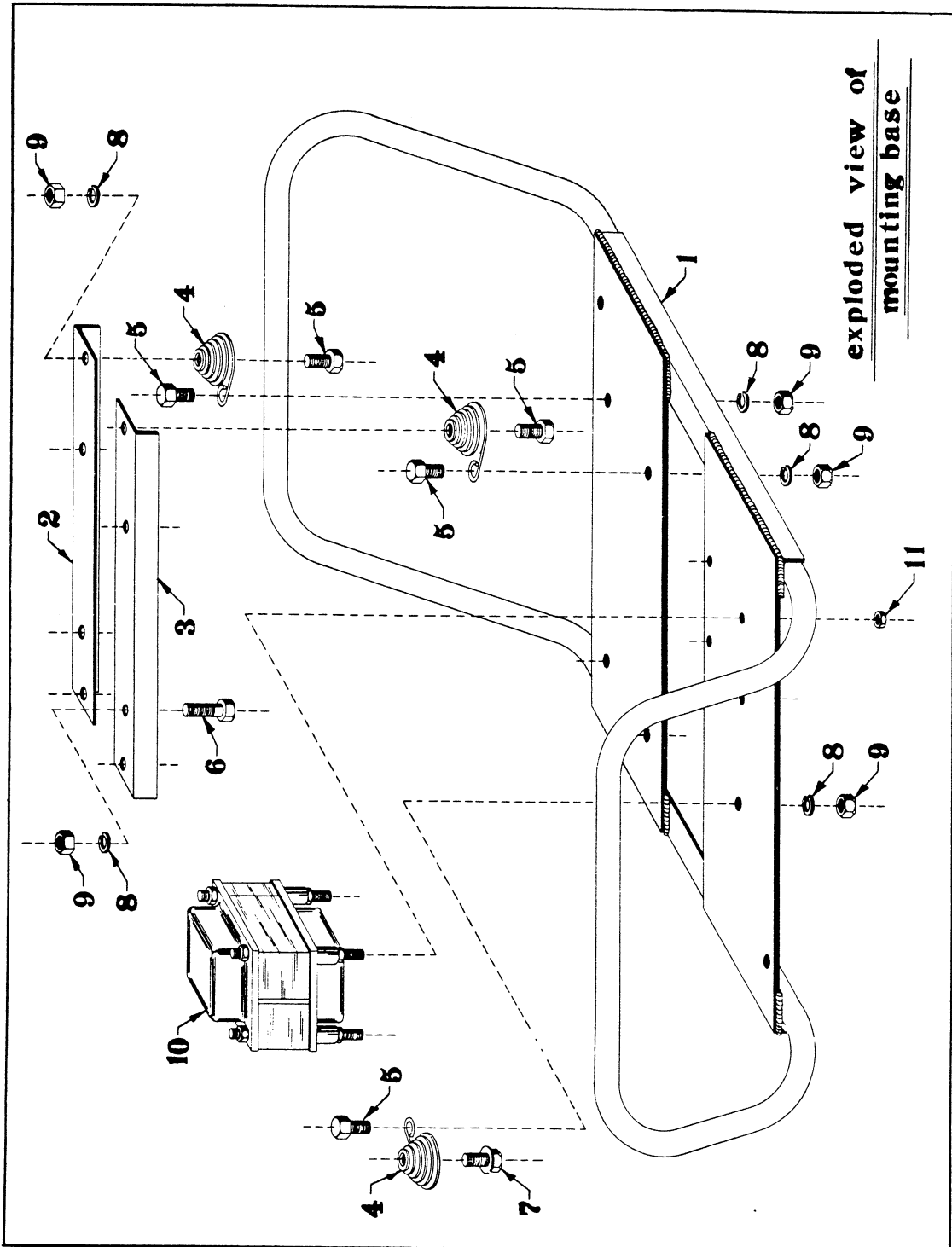
REVISED BUL 6351-1 DATE Feb. '68

Catalog No. 4450

Starting Serial No. 351-1001

WIRING INSTR.

Both Model and Serial No. must be furnished to obtain correct parts.



exploded view of mounting base

X97A-M-Ind-465-300