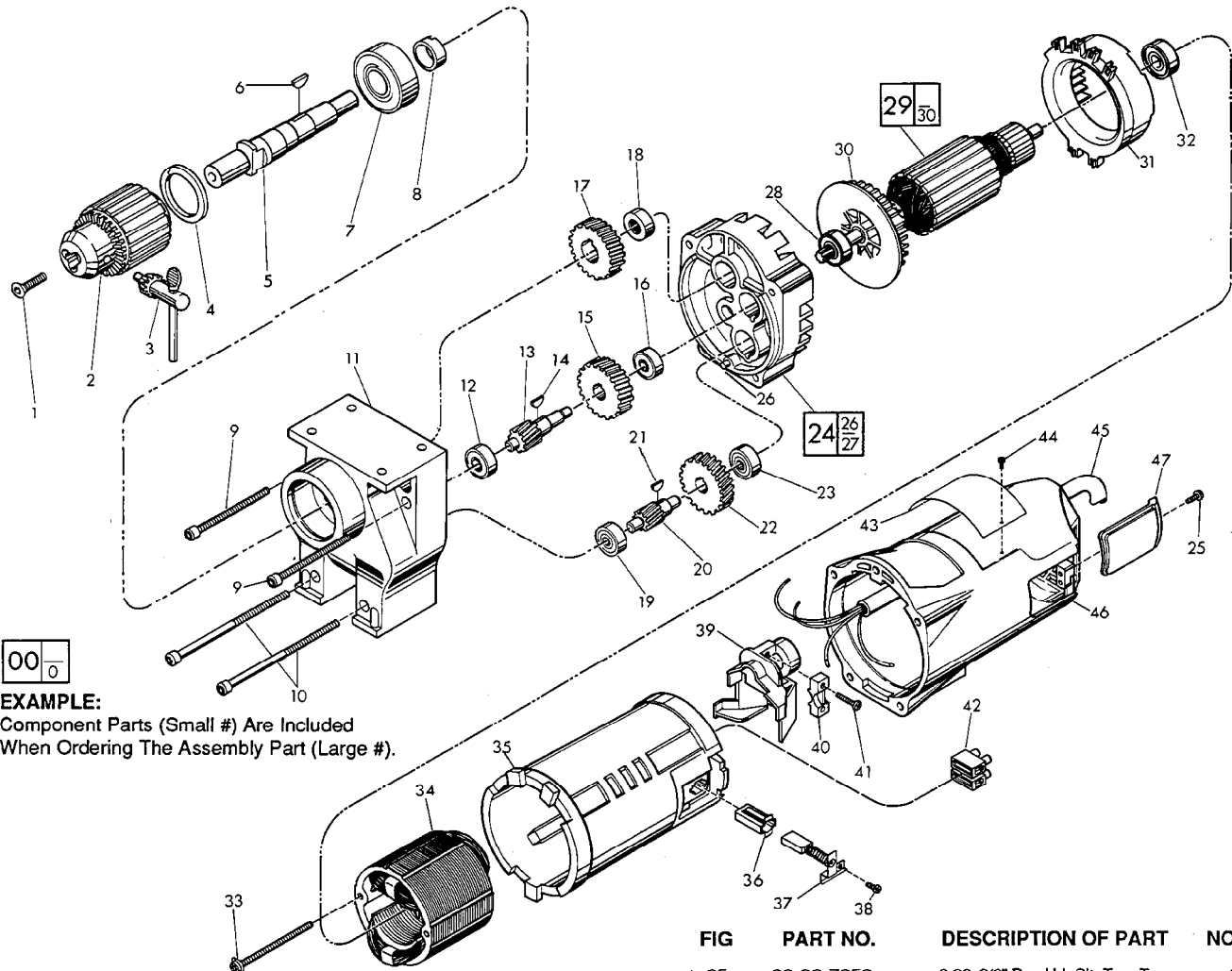




SERVICE PARTS LIST

BULLETIN NO.
54-14-2403

SPECIFY CATALOG NO. AND SERIAL NO. WHEN ORDERING PARTS		REVISED BULLETIN 54-14-2402	DATE April'88
3/4" ELECTRIC DRILL			
CATALOG NO. 4262-1	STARTING SERIAL NO. 502-18600	WIRING INSTRUCTION 58-01-0376	



00
0

EXAMPLE:
Component Parts (Small #) Are Included
When Ordering The Assembly Part (Large #).

FIG.	PART NO.	DESCRIPTION OF PART	NO REQ.	FIG.	PART NO.	DESCRIPTION OF PART	NO. REQ.
				★ 25	06-82-7252	8-32x3/8" Pan Hd. Slit Tap. Torx	(2)
				★ 26	06-65-1155	Groove Pin	(1)
				27	45-30-0070	Ball Bearing Retaining Slug (Not Shown)	(2)
				★ 28	02-04-1229	Ball Bearing	(1)
				★ 29	16-70-0360	120 V. Armature	(1)
				★ 30	22-84-0790	Fan	(1)
				★ 31	42-14-0291	Baffle	(1)
				★ 32	02-04-1041	Ball Bearing	(1)
				★ 33	06-82-9072	10-24x2-1/8" Pan Hd. Torx Sems	(2)
				★ 34	18-70-0320	120 V. Field	(1)
				★ 35	23-16-1410	Insulating Housing	(1)
				★ 36	22-20-0680	Brush Tube	(2)
				★ 37	22-18-0701	Carbon Brush Assembly	(2)
				★ 38	06-82-8835	8-32x5/16" Pan Hd. Slit Torx Sems	(2)
				★ 39	22-38-0140	Wire Trap	(1)
				★ 40	31-17-0200	Cord Clamp	(1)
				★ 41	06-82-7326	8-16x1" Pan Hd. Plast. Slit Torx	(2)
				★ 42	22-56-0470	Terminal Block	(1)
				★ 43	12-15-9040	Service Nameplate	(1)
				★ 44	06-85-0200	Service Nameplate Screw	(2)
				★ 45	22-64-3050	120 V. Cord Set	(1)
				★ 46	28-50-6360	Motor Housing	(1)
				★ 47	22-32-0350	Brush Cover	(2)
1	06-81-3100	5/16-18x1" Skt. Hd. Screw	(1)	FIG.	LUBRICATION		
2	48-66-2085	3/4" Chuck	(1)	11	9-1/2 Oz. Type "E" Grease No. 49-08-4121.		
3	48-66-3160	Chuck Key	(1)	FIG.	NOTES		
4	34-80-3800	Retaining Ring	(1)	9 & 10	Apply Blue Loctite To Threads.		
5	38-50-5480	Reversing Spindle	(1)				
6	06-42-2400	Woodruff Key	(1)				
7	02-20-2521	Ball Bearing	(1)				
8	45-36-0080	Spindle Spacer	(1)				
★ 9	06-82-8550	1/4-20x3-1/8" Fil. Taptite Torx Sems	(2)				
★ 10	06-82-9202	1/4-20x4-1/4" Fil. Taptite Torx Sems	(2)				
11	28-14-0091	Gear Case Assembly	(1)				
12	02-04-1210	Ball Bearing	(1)				
★ 13	36-66-1302	Intermediate Shaft	(1)				
14	06-42-2000	Woodruff Key	(1)				
15	32-44-1141	Intermediate Gear	(1)				
★ 16	02-04-0910	Ball Bearing	(1)				
17	32-75-1261	Spindle Gear	(1)				
18	02-50-4820	Needle Bearing	(1)				
19	02-04-0910	Ball Bearing	(1)				
20	36-66-1251	Intermediate Shaft	(1)				
21	06-42-1200	Woodruff Key	(1)				
22	32-42-1201	Intermediate Gear	(1)				
23	02-04-0910	Ball Bearing	(1)				
★ 24	14-13-0250	Diaphragm Assembly	(1)				