

## Saw Assembly – Parts

Index No.	Part No.	Description	Size	Qty
1	J-9225-01	Body Frame		1
2	J-9225-02	Anchor Block		1
2A	J-9225-02A	Anchor Plate		1
2B	TS-2245102	Button Head Socket Screw	M5x10	2
3	9225-03	Shaft		1
4	TS-1504061	Socket Head Cap Screw	M8x30	3
5	9225-05	Bearing Cover		2
6	9225-06	Tapered Bearing		2
7	TS-1551061	Lock Washer	M8	3
10-1	9180-10-1	Blade Tension Gauge		1
11	9180-11	Bearing		1
12	9180-12	Handle		2
13	9180-13	Hub		1
14	9180-14	Spring Washer	øID16.3xø31.5x1.8t	14
15	9225-15	Lead Screw		1
16	TS-154010	Hex Nut	M16	1
17	TS-1504041	Socket Head Cap Screw	M8x20	3
18	J-9225-18	Fixed Block		1
19	9180-19	Pin	ø 5x40	2
20	9225-20	Locking Handle	M10x60	1
21	J-9225-21	Fixed Block		1
22	TS-1504041	Socket Head Cap Screw	M8x20	2
23	TS-1523051	Set Screw	M6x16	4
25	9225-25	Blade Adjust Bar		1
26	TS-1524021	Set Screw	M8x10	2
27	TS-1503021	Socket Head Cap Screw	M6x10	1
28	9225-28	Lift Handle		1
29	9180-29	Handle Grip		1
32	TS-2246302	Button Head Socket Screw	M6x30	4
35	TS-1503011	Socket Head Cap Screw	M6x8	2
38	9225-38	Guide Block (Front)		1
39	TS-1524051	Set Screw	M8x20	2
40	TS-1540061	Hex Nut	M8	2
41	9225-41	Guide		2
42	9225-42	Guide		2
43	9225-43	Eccentric Guide		2
44	BB-608ZZ	Bearing	608ZZ	4
45	9180-45	C-Retainer Ring	ø8	4
46	9225-46	Eccentric Guide		2
47	TS-2246162	Button Head Socket Screw	M6x16	2
48	J-9225-48	Blade Guard		1
52	TS-1523011	Set Screw	M6x6	2
54	9225-54	Guide Block (Rear)		1
55	TS-1523011	Set Screw	M6x6	2
56	9180-56	Button Head Socket Screw	M8x35	2
58	J-9225-58	Blade Cover		1
59	TS-1550031	Flat Washer	M5	2
60	TS-2245102	Button Head Socket Screw	M5x10	2
63	TS-1505061	Socket Head Cap Screw	M10x40	2
64	TS-1505031	Socket Head Cap Screw	M10x25	2
65	9225-65	Frame Pivot Shaft		1
66	9225-66	Cover		2
67	9225-67	Tapered Bearing		1
71	9225-71	Motor	1.5HP, 3Ph, 230V	1
71-1	9225-71-1	Key	6x6x40	4
72	TS-1482051	Hex Cap Screw	M6x25	4

## Saw Assembly – Parts

Index No.	Part No.	Description	Size	Qty
73	TS-2361061	Lock Washer	M6	4
74GA	9225-74GA	Gear Box Assembly		1
75	TS-1551071	Lock Washer	M10	4
76	TS-1505021	Socket Head Cap Screw	M10x20	4
77	9225-77	Reducer Cover		1
78	9180-78	Hose Fitting	ø8x1/4"PT	1
79	TS-1503041	Socket Head Cap Screw	M6x16	2
80	9180-80	Coolant Block		1
81	9180-81	Hose	ø6x240L	1
82	9180-82	Valve	1/8"	2
83	9180-83	Hose Fitting	ø6x1/8"PT	4
84	9225-84	Hose	ø6x970L	1
85	TS-1505041	Socket Head Cap Screw	M10x30	1
86	9225-86	Washer		1
87	9180-87	Round Head Key	8x7x50	1
88	9225-88	Output Shaft		1
89	9225-89	Round Head Key	8x7x25	1
90	9225-90	Bearing		1
91	9225-91	Spring Support		1
92	9225-92	Spring		1
93	TS-1550071	Flat Washer	M10	2
93-1	9225-93-1	Limit Switch Bracket		1
93-2	TS-1502041	Socket Head Cap Screw	M5x16	1
93-3	TS-1551031	Lock Washer	M5	1
93-4	TS-1550071	Flat Washer	M10	1
93-5	TS-1540071	Hex Nut	M10	1
94	TS-1505061	Socket Head Cap Screw	M10x40	1
95	9225-95	Cylinder Assembly		1
96	9225-96	Idler Wheel		1
97	TS-1551071	Lock Washer	M10	2
98	TS-1505041	Socket Head Cap Screw	M10x30	2
99	9225-99	Nut		1
100		Blade ( <i>local purchase</i> )	1"x.035x96.5"x5/8VT	1
101	9225-101	Drive Wheel		1
102	9225-102	Drive Shaft Washer		1
103	TS-1492021	Hex Cap Screw	M12x30	1
104	9225-104	Frame Back Cover		1
105	TS-1503041	Socket Head Cap Screw	M6x16	4
106	TS-1550041	Flat Washer	M6	4
106-1	9225-106-1	Washer		1
107	TS-2245202	Button Head Socket Screw	M5x20	3
108	9225-108	Hose Clip		3
109	TS-2248162	Button Head Socket Screw	M8x16	2
115	9225-115	Label		1
116	9225-116	Cover		1
117	TS-2245162	Button Head Socket Screw	M5x16	2
165A	9225-165S	Stock Stop Assembly (#165-1 thru #165-8)		1
165-1	9180-165-1	Stop Block		1
165-2	TS-1550061	Flat Washer	M8	2
165-3	9180-165-3	Locking Handle		2
165-4	9180-165-4	Stock Stop Rod		1
165-5	9225-165-5	Distance Set Rod		1
165-7	9225-165-7	Scale		1
165-8	9225-165-8	Rivet	ø2	4
170	9225-170	Hand Wheel		1
171	9180-171	Pin	ø5x35	1

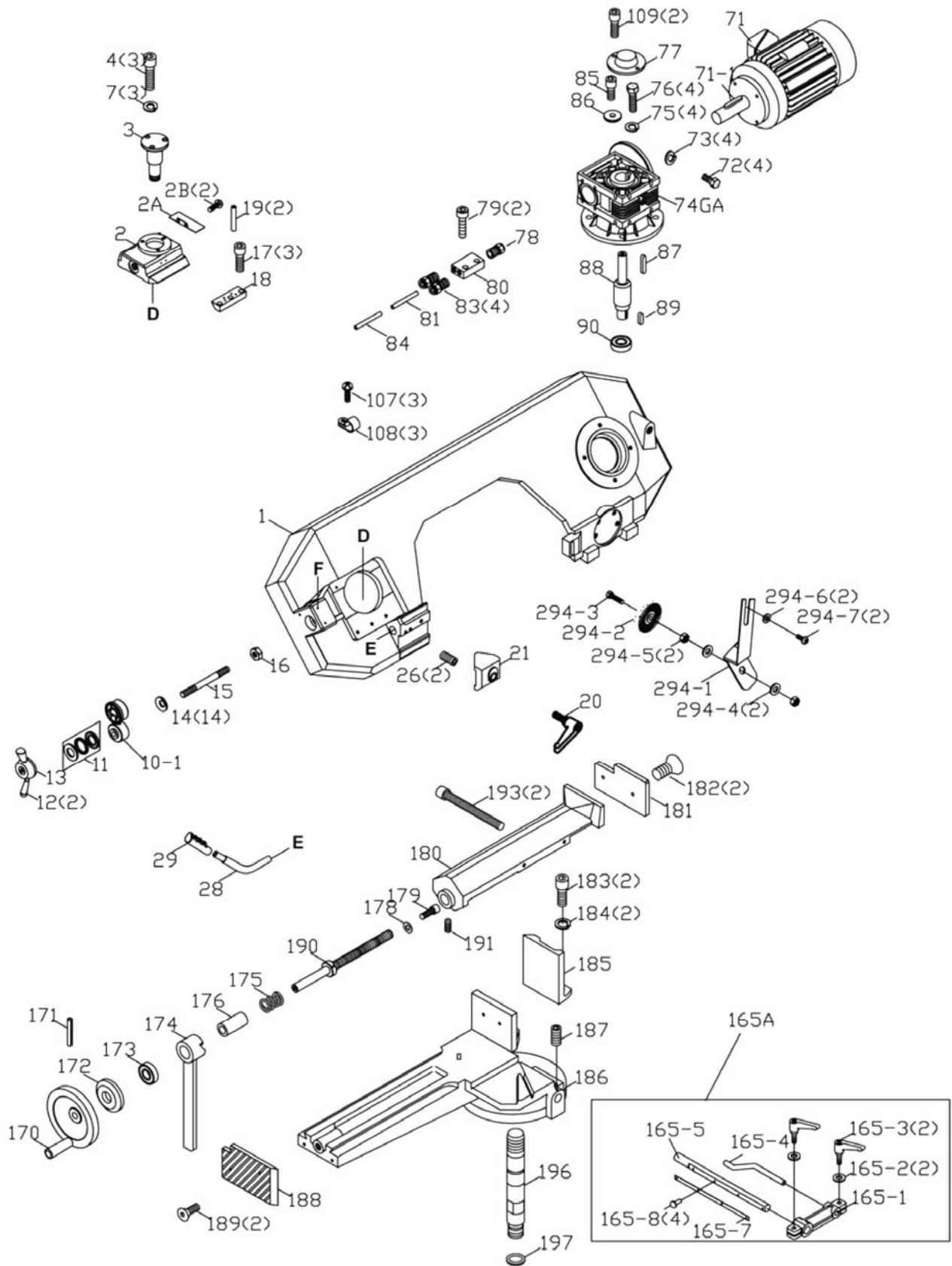
## Saw Assembly – Parts

Index No.	Part No.	Description	Size	Qty
172	9180-172	Bearing Cover		1
173	9180-173	Bearing	ø30xø47x3.5	1
174	9180-174	Vise Handle		1
175	9180-175	Spring		1
176	9180-176	Bushing		1
178	9225-178	Washer	ø6.5xø18x1.5	1
179	TS-1503041	Socket Head Cap Screw	M6x16	1
180	J-9225-180	Front Moveable Vise Jaw		1
181	9225-181	Vise Jaw Insert		1
182	TS-1514011	Flat Head Socket Screw	M6x12	2
183	TS-1505041	Socket Head Cap Screw	M10x30	2
184	TS-1551071	Lock Washer	M10	2
185	9225-185	Vise Jaw		1
186	J-9225-186	Rear Stationary Vise Jaw		1
187	TS-1524021	Set Screw	M8x10	1
188	9225-188	Grooved Jaw Insert		1
189	TS-1514021	Flat Head Socket Screw	M6x16	2
190	9225-190	Lead Screw		1
191	TS-1524051	Set Screw	M8x20	1
193	9225-193	Socket Head Cap Screw	M6x110	2
194	J-9225-194	Swivel Arm		1
195	TS-1540071	Hex Nut	M10	2
196	9225-196	Vise Swivel Rod		1
197	9180-197	O-Retainer Ring	ø19.8xø2.4	1
198	TS-2210451	Hex Cap Screw	M10x45	2
199	9225-199	Bearing		1
200	9225-200	Bushing		1
201	9225-201	Nut		1
202	9180-202	Spring Eye Bolt		1
202-1	TS-1540071	Hex Nut	M10	1
207	TS-1523051	Set Screw	M6x16	2
209	9225-209	Control Box Base		1
209-1	9225-209-1	Speed Valve		1
209-2	9225-209-2	Throttle Valve		1
210-1	9225-210-1	Retaining O-Ring		1
214	9225-214	Control Box Label		1
215		Electrical Control Box Assembly (Reference Only)		1
216	9180-216	Hex Socket Plug	3/8"PT	1
216-1	9180-216-1	Washer		1
217	9225-217	Sight Glass		1
218	9225-218	O-Retainer Ring	ID195x5.7W	1
219	TS-1551071	Lock Washer	M10	6
220	TS-1505021	Socket Head Cap Screw	M10x20	6
221	J-9225-221	Stand Top		1
221-1	J-9225-221-1	Swivel Arm Base		1
222	9180-222	Screen		1
223	TS-2284082	Pan Head Screw	M4x8	2
224	9180-224	Stop Bolt	M10x50	1
224-1	9180-224-1	Stop Bolt	M10x100	1
225	TS-1540071	Hex Nut	M10	2
227	TS-1491031	Hex Cap Screw	M10x25	2
228	TS-2361101	Lock Washer	M10	2
229	9225-229	Fixed Plate		1
230	TS-2246102	Button Head Socket Screw	M6x10	2
231	TS-1505051	Socket Head Cap Screw	M10x35	1

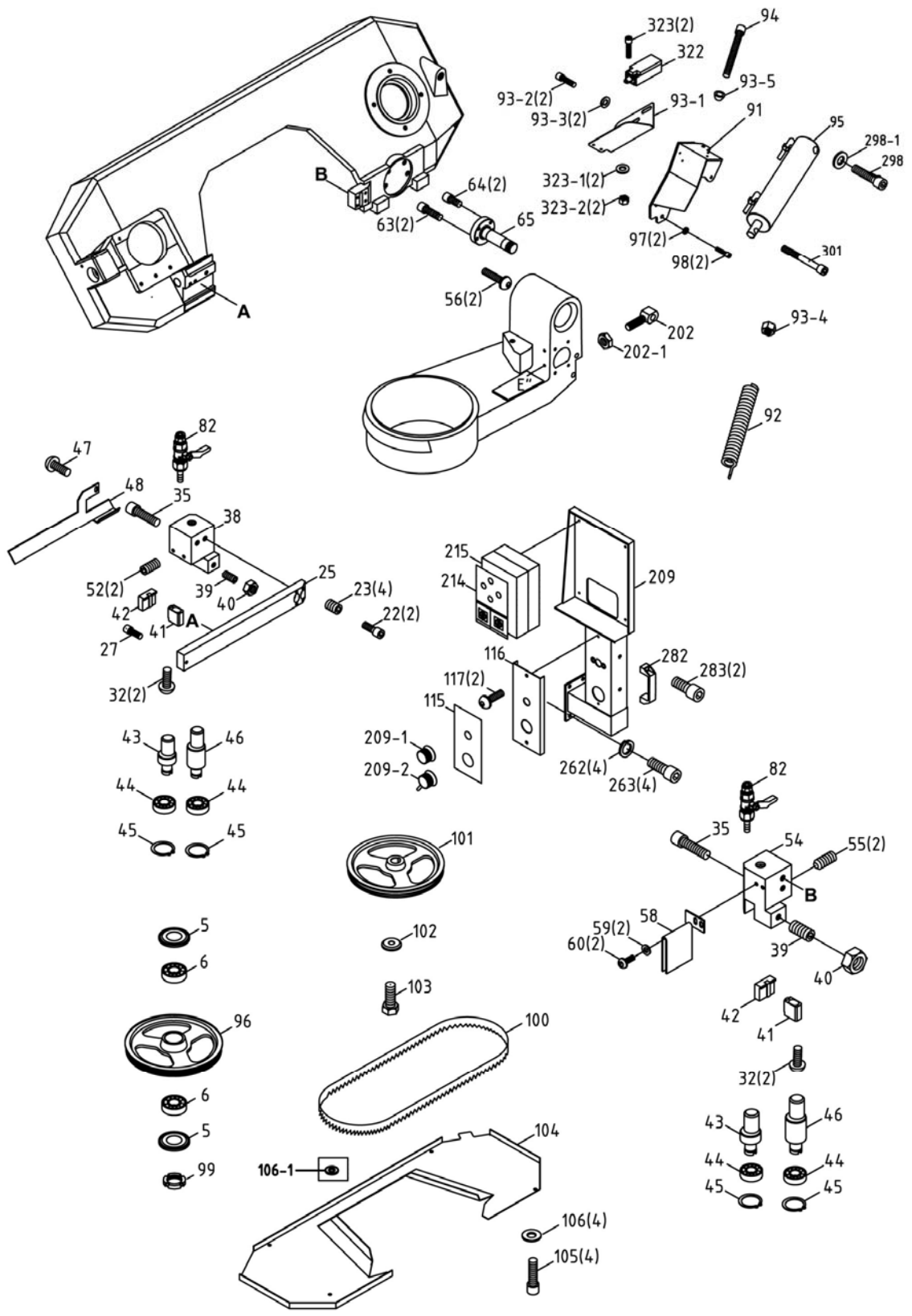
## Saw Assembly – Parts

Index No.	Part No.	Description	Size	Qty
232	9180-232	Nut		1
233	9180-233	Swivel Lock Handle		1
234	TS-1550061	Flat Washer	M8	4
235	TS-1504051	Socket Head Cap Screw	M8x25	4
240	9180-240	Pump	1/8HP	1
241	TS-1534052	Pan Head Screw	M6x16	2
242	TS-2361061	Lock Washer	M6	2
243	9180-243	Elbow	3/8"x3/8"	1
245	9180-245	Hose	ø8x1300L	1
248	9180-248	Tray		1
249	9225-249	Feed Support		1
	J-9225-250A	Stand Panel Set (Index #250-1 thru 250-5)		1
250-1	J-9225-250-1	Rear Stand Panel		1
250-2	J-9225-250-2	Right Stand Panel		1
250-3	J-9225-250-3	Front Stand Panel with door ( <i>serial no 07080025 and higher</i> )		1
250-4	J-9225-250-4	Left Stand Panel with hook ( <i>serial no 07080025 and higher</i> )		1
250-5	J-9225-250-5	Bottom Plate ( <i>serial no 07080025 and higher</i> )		1
253	TS-1490031	Hex Cap Screw	M8x20	12
254	TS-1550061	Flat Washer	M8	24
255	TS-1540061	Hex Nut	M8	12
256-1	9225-193	Socket Head Cap Screw	M6x110	1
256-2	TS-1541021	Nylon Lock Hex Nut	M6	2
256-3	TS-1550041	Washer	M6	2
262	TS-1551041	Lock Washer	M6	4
263	TS-1503041	Socket Head Cap Screw	M6x16	4
282	9180-282	Handle		1
283	TS-1504031	Socket Head Cap Screw	M8x16	2
292	TS-1540071	Hex Nut	M10	1
	9225-294S	Brush Assembly (#294-1 thru 294-7)		1
294-1	9225-294-1	Brush Support		1
294-2	9225-294-2	Brush		1
294-3	TS-1482061	Hex Cap Screw	M6x30	1
294-5	TS-1540041	Hex Nut	M6	1
294-6	TS-1550041	Flat Washer	M6	2
294-7	TS-1503021	Socket Head Cap Screw	M6x10	2
298	TS-1505131	Socket Head Cap Screw	M10x 75L	1
298-1	TS-1550071	Washer	M10	1
301	9225-301	Socket Head Cap Screw	M10x 110L	1
304	TS-1503041	Socket Head Cap Screw	M6x16	2
305	TS-1551041	Lock Washer	M6	2
306	TS-1550041	Flat Washer	M6	2
307	TS-1540041	Hex Nut	M6	2
322	9225-322	Limit Switch		1
323	TS-1501081	Socket Head Cap Screw	M4x30	2
323-1	TS-2361041	Lock Washer	M4	2
323-2	TS-1540021	Hex Nut	M4	2
	JETLOGO-1	JET Logo Plate (not shown)	2-3/4" x 8"	1
	STRIPE-1-3/4	Stripe (not shown)	1-3/4"W	per ft.

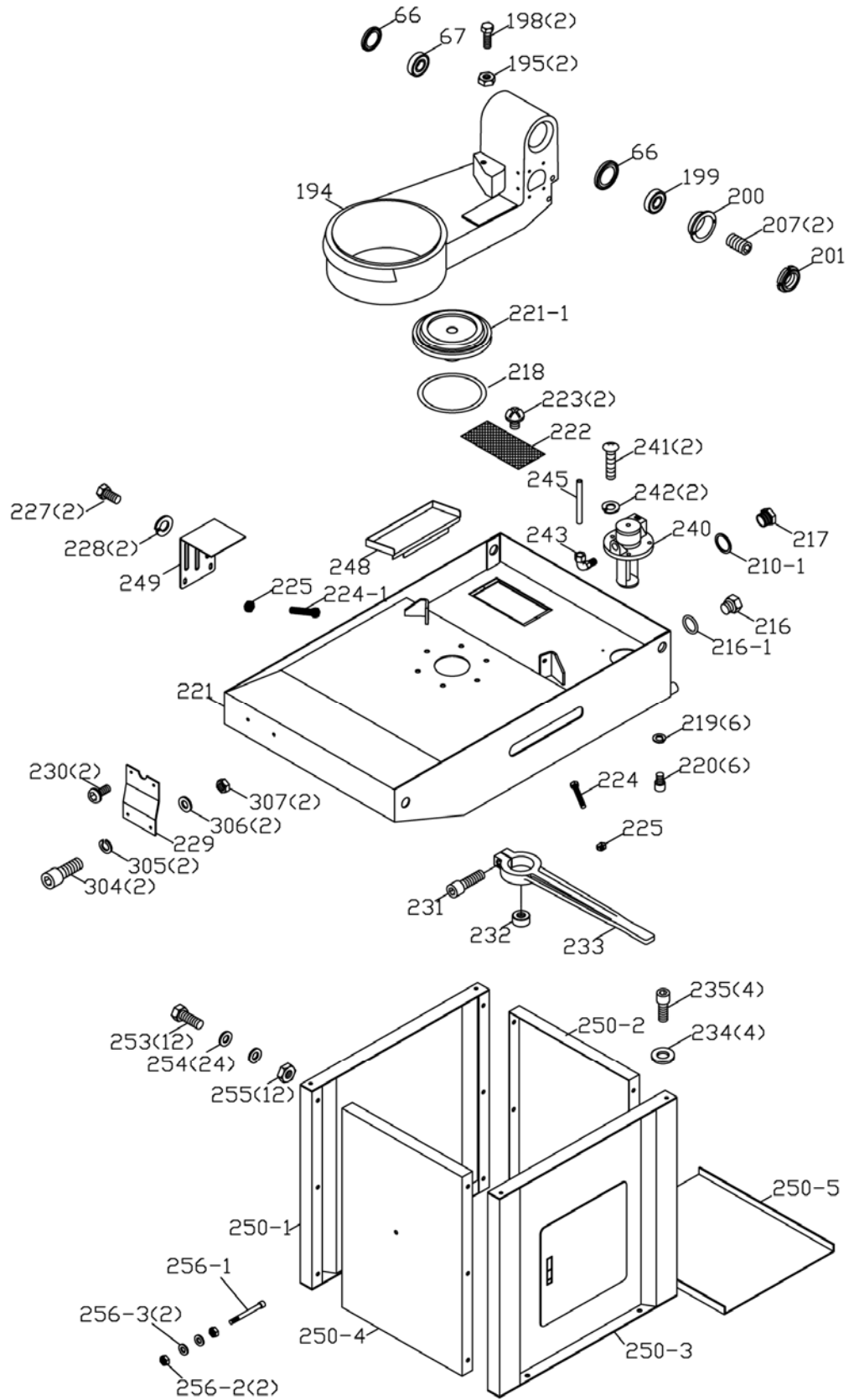
# Saw Assembly Drawing (1 of 3)



# Saw Assembly Drawing (2 of 3)



# Saw Assembly Drawing (3 of 3)

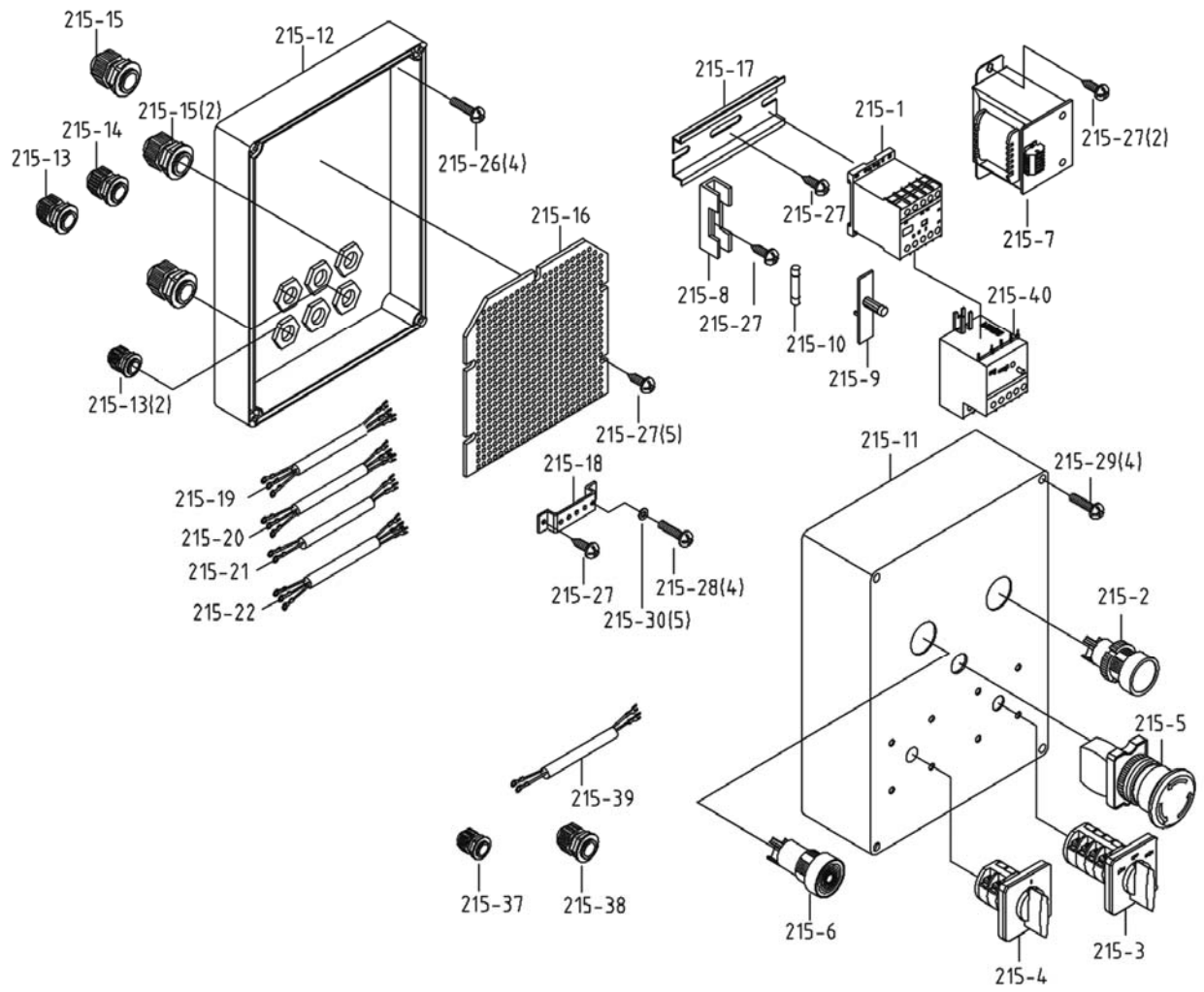


## Electrical Box Assembly – Parts

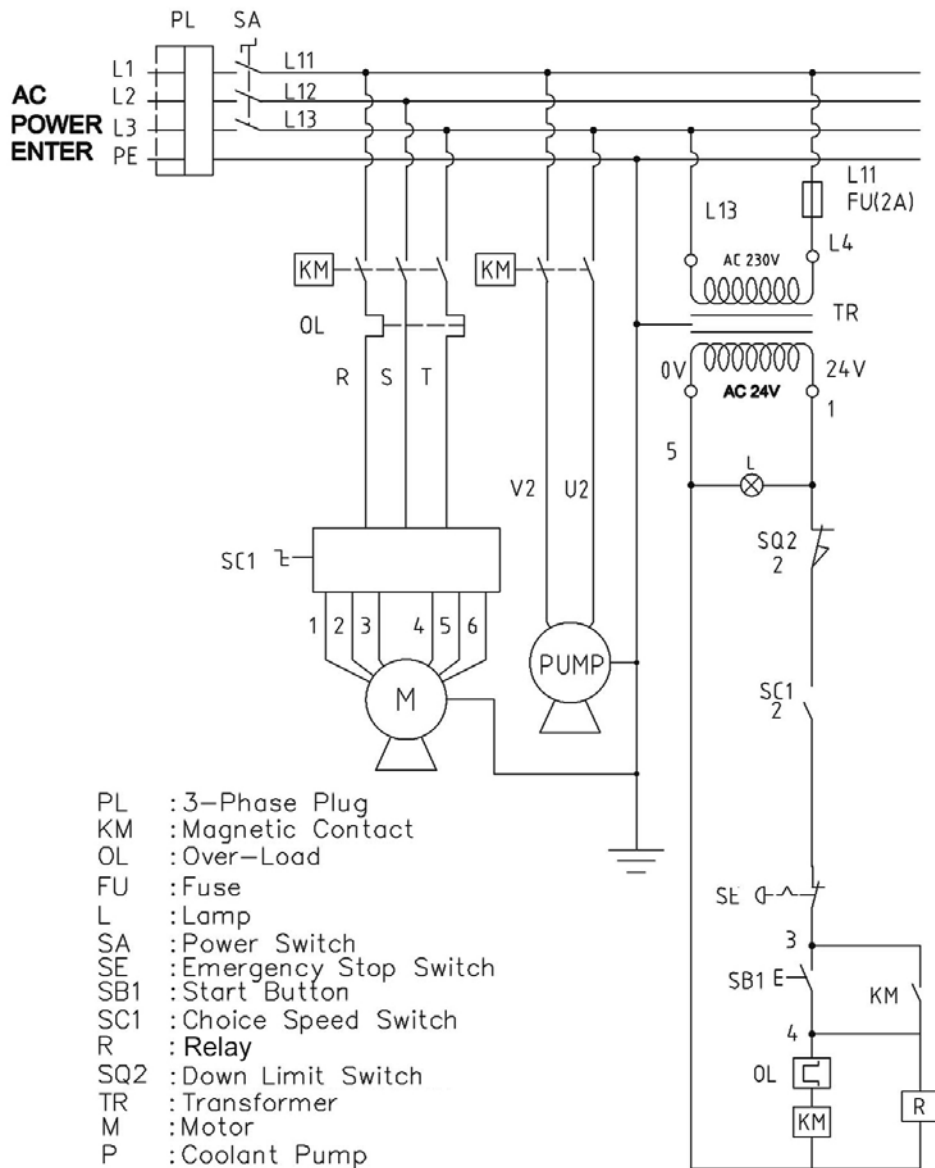
Index No.	Part No.	Description	Size	Qty
215		Electrical Control Box Assembly: 3Ph (Reference Only)		1
215-1	9180-215-1	Magnetic Contactor		1
215-2	9180-215-2	Push Button Start Switch		1
215-3	9180-215-3	Speed Switch		1
215-4	9180-215-4	On/Off Switch		1
215-5	9180-215-5	Emergency Stop Switch		1
215-6	9180-215-6	Power Lamp		1
215-7	9180-215-7	Transformer		1
215-8	9180-215-8	Fuse Base		1
215-9	9180-215-9	Fuse Lid		1
215-10	9180-215-10	Fuse	2A	1
215-11	J-9180-215-11	Electrical Box Cover		1
215-12	J-9225-215-12	Electrical Box		1
215-13	9180-215-13	Cable Relief		2
215-14	9180-215-14	Cable Relief		1
215-15	9180-215-15	Cable Relief		2
215-16	9180-215-16	Net Plate		1
215-17	9180-215-17	Rail		1
215-18	9180-215-18	Bracket		1
215-19	9180-P4C15	Power Cable (for 3Ph)	4cx1.5mm	1
215-20	9180-M4C15	Motor Cable (for 3Ph)	4cx1.5mm	1
215-21	9180-215-21	Limit Cable		1
215-22	9180-215-22	Pump Cable		1
215-26	TS-1533032	Pan Head Screw	M5x10	4
215-27	9180-215-27	Tapping Screw	M4x8	11
215-28	9180-215-28	Screw	M4x6	4
215-29	TS-1532052	Pan Head Screw	M4x16	4
215-30	9180-215-30	Washer	M5	5
215-37	9180-215-37	Cable Relief		1
215-38	9180-215-38	Cable Relief		1
215-39	9180-215-39	Wire		1
215-40	9225-OL-3	Overload	5.5-8A	1



# Electrical Box Assembly



# Wiring Diagram



# JET

**WALTER MEIER (Manufacturing) Inc.**

427 New Sanford Road  
 LaVergne, Tennessee 37086  
 Phone: 800-274-6848  
[www.waltermeier.com](http://www.waltermeier.com)