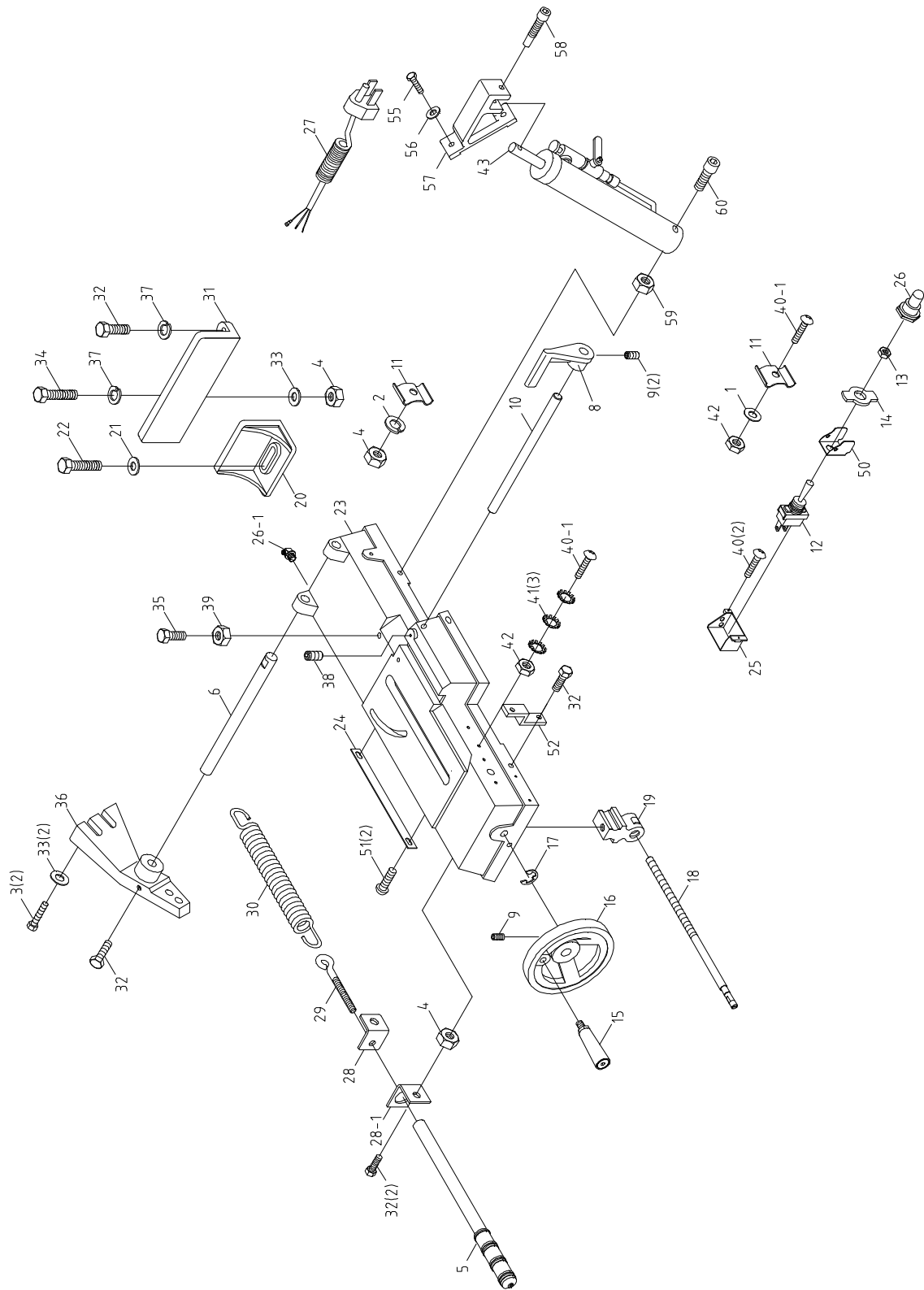


# Saw Base – Exploded View

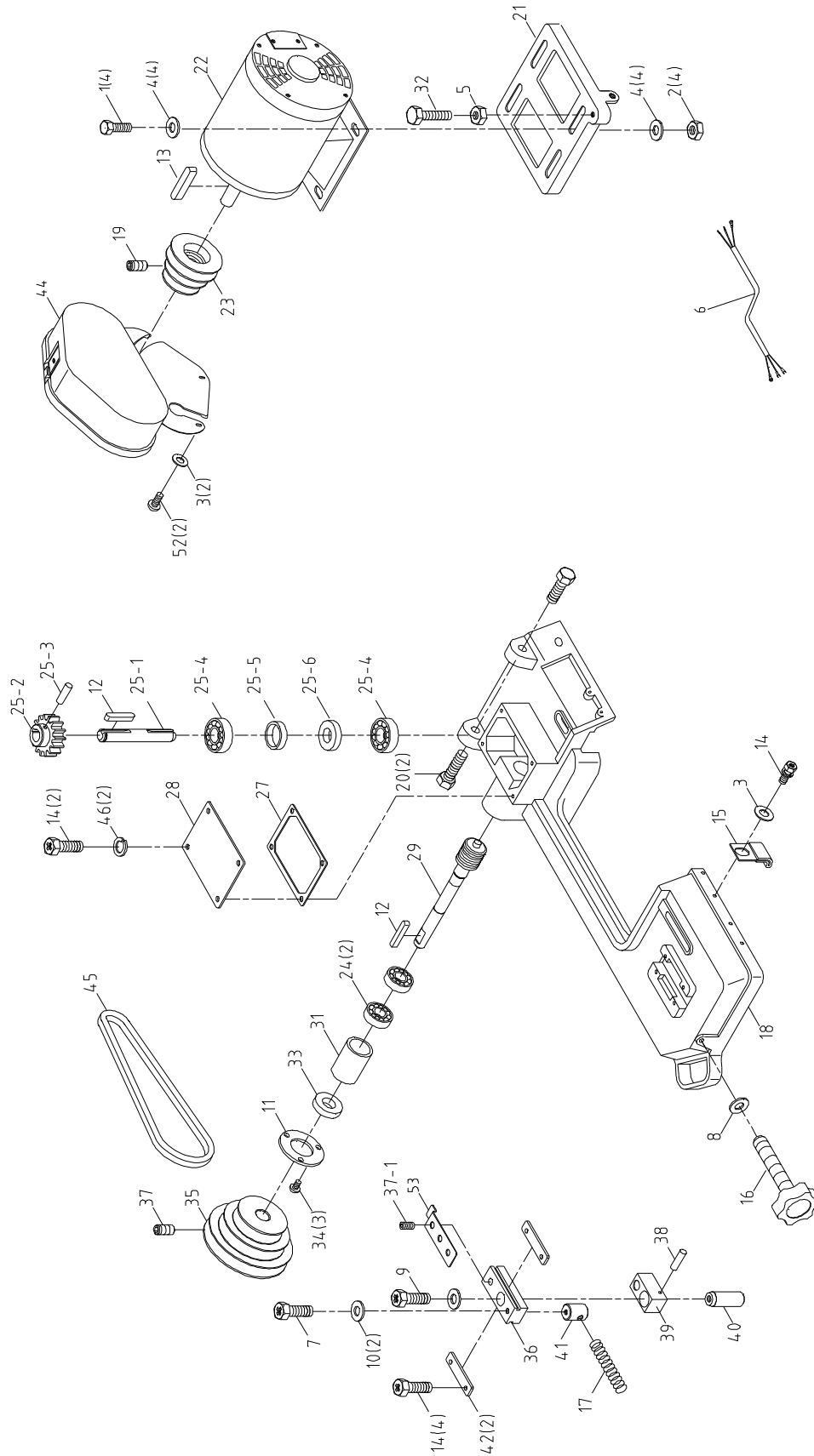


## Saw Base – Parts List

Index No.	Part No.	Description	Size	Qty
01	5630221	Washer	1/4"x16xt1.5	1
02	5630031	Washer	5/16"	1
03	5630051	Hex head screw	5/16"-18x1"L	2
04	5630061	Hex nut	5/16"-18	8
05	5630081	Adjust rod		1
06	5630111	Pivoting rod		1
07	5630121	Support plate		1
08	5630131	Stock stop		1
09	5630241	Set screw	5/16"-18x5/16"L	2
10	5630151	Stock stop rod	1/2"x216L	1
11	5630111	Electric wire restrainer		2
12	5630171	Toggle switch		1
13	5630181	T.S. hex nut		1
14	5630211	ON/OFF plate		1
15	5631091	Handle grip		1
16	5630231	Hand wheel		1
17	5630251	Retaining ring	E10	1
18	5630271	Lead screw		1
19	5630281	Vise nut		1
20	J-5630291	Vise jaw, left		1
21	5630301	Washer	3/8"x27xt3	3
22	5630311	Hex head screw	5/16"-18x1-1/4"L	1
23	J-5630321	Base casting		1
24	5630341	Scale		1
25	5630351	Switch enclosure		1
26	563038A	Wire restrainer		1
26-1	5630381R	Wire restrainer	PG9	1
27	5630391	Power supply cable		1
28	5630401	Feed spring bracket, right		1
28-1	5521946	Feed spring bracket, left		1
29	5630411	Eye bolt		1
30	5630421	Spring		1
31	J-5630441	Vise jaw, right		1
32	5631481	HH screw	5/16"-18x1"L	6
33	5630461	Washer	5/16"x23xt3	3
34	5630451	Hex head screw	5/16"-18x1-1/2"L	1
35	5631491	Hex head screw	7/16"-14x2"L	1
36	J-5630491	Pivot		1
37	5630611	Spring Washer	5/16"x3/4"x1/8"	2
38	5630981	Set screw	5/16"-18x5/8"L	1
39	5632061	Hex nut	7/16"-14	1
40	5632091	RH Phillips screw	3/16"-24x3/8"L	2
40-1	5521947	RH Phillips screw	3/16"-24x3/4"L	2
41	5632101	Star Washer	3/16"	3
42	5632111	Hex nut	3/16"-24	1
43	5521948	Cylinder		1
43-1	TS-1540061	Hex Nut, full	M8	1
44	TS-1505081	Socket head cap screw	M10-P1.5x50	1
44	TS-0209011	Socket head cap screw	3/8"-16x2-1/2	1
45	TS-1550061	Flat washer	M8	1
46	TS-1540071	Hex nut, full	M10	1
46	5521953	Hex nut	3/8"-16	1
47	TS-1504091	Socket head cap screw	M8x45	1
50	5521949	Switch Cover		1
51	5632091	RH Phillips screw	3/16"-24x3/8"L	2
52	5521950	Fixed Plate		1
53	TS-0208061	Socket head cap screw	5/16"-18x1	1
54	TS-0561021	Hex nut, full	5/16"-18	1
55	TS-0050051	Hex cap screw	1/4"-20x1"	2

<b>Index No.</b>	<b>Part No.</b>	<b>Description</b>	<b>Size</b>	<b>Qty</b>
56	TS-0680021	Flat washer	1/4"	2
57	HBS56S-259	Cylinder Upper Support (serial #11110606 and higher)		1
58	TS-0209061	Socket Head Cap Screw	3/8"-16x1-1/4"L	1
59	TS-0561021	Hex Nut	5/16"	1
60	J-3130-60	Socket Head Cap Screw	5/16"-18x4"L	1

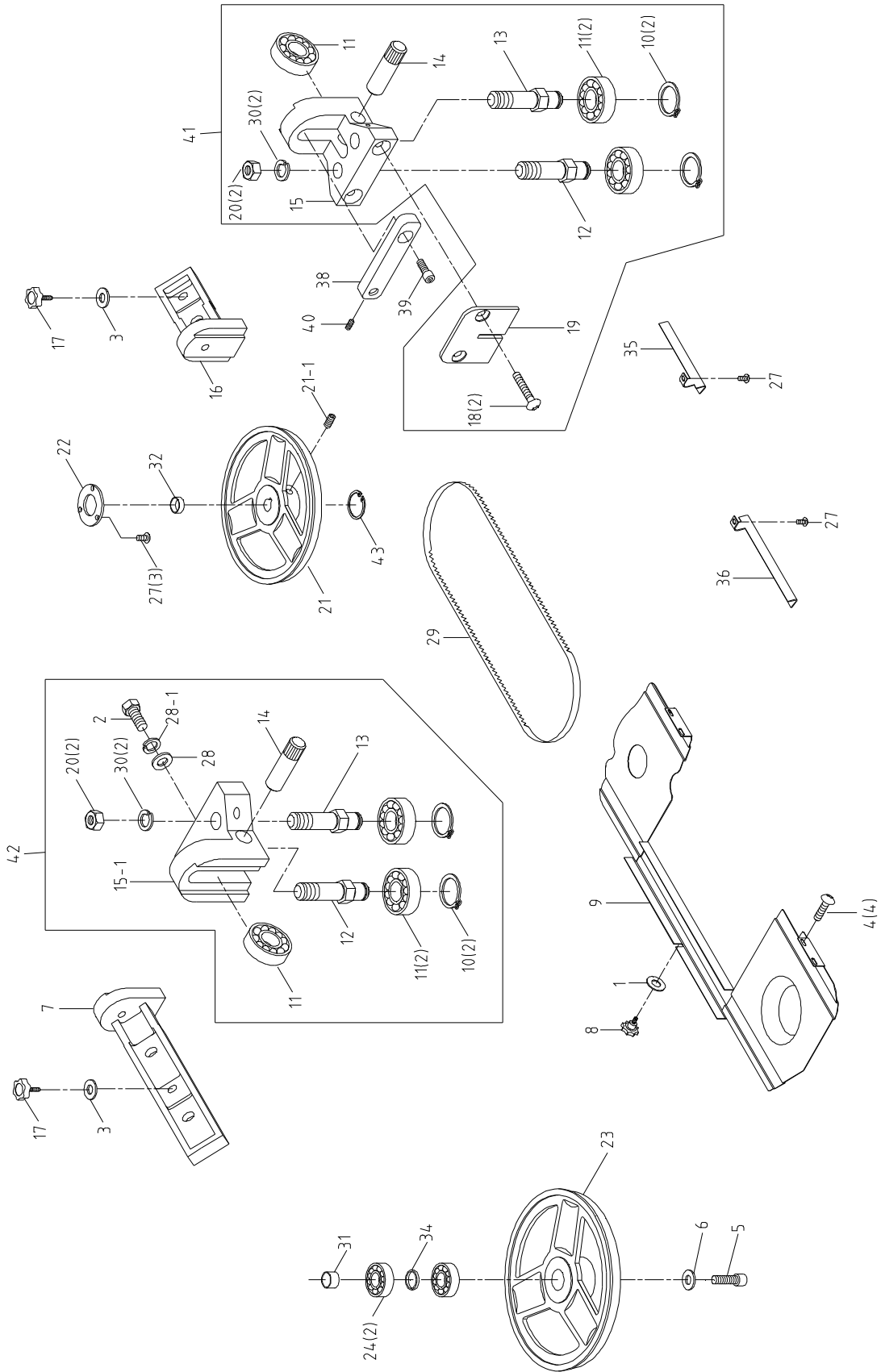
# Lower Saw Head – Exploded View



## Lower Saw Head – Parts List

Index No.	Part No.	Description	Size	Qty
01	5631421	Hex head Screw	1/4"-20x3/4"	4
02	5631431	Hex nut	1/4"-20	4
03	5630221	Washer	1/4"x5/8xt1.5mm	3
04	5631451	Washer	5/16"x23xt2	8
05	5630061	Hex nut	5/16"-18	1
06	5631161	Motor cable		1
07	5630471	Hex head screw	5/16"-18x1-1/4"L	1
08	5630301	Washer	3/8"x27xt3	1
09	5631481	Hex head screw	5/16"-18x3/4"L	2
10	5630461	Washer	5/16"x23xt3	2
11	5630661	Wheel bearing cover		1
12	5630671	Key	5x5x25mm	2
13	5632011	Motor key	5x5x30mm	1
14	5632021	Hex head screw	1/4"-20x1/2"L	7
15	5630701	Switch activator bracket		1
16	5630731	Blade tension adj. knob	3/8"-16UNCx94mmL	1
17	5630741	Spring		1
18	J-5630751	Head casting		1
19	5630681	Set screw	M8-P1.25x8L	1
20	563077A	Hex head screw	3/8"-16x1-1/4"L	2
21	563078A	Motor mounting plate		1
22	J-5630791	Motor	1/2HP,1PH,115V	1
23	5630811	Motor pulley		1
24	5630821	Ball bearing	6202Z	2
25	5633121	Transmission gear shaft		1
25-1	5521940	Transmission wheel shaft		1
25-2	5521941	Transmission gear		1
25-3	5521942	Pin	4x22mmL	1
25-4	5630821	Ball bearing	6202ZZ	2
25-5	5521943	Bushing		1
25-6	5630941	Oil seal	TC15x35x7	1
27	5630871	Gearbox gasket		1
28	5630881	Gearbox cover		1
29	5630921	Worm gear & shaft assembly		1
31	5630911	Bearing bushing		1
32	563093A	Belt tension adj. screw	5/16"-18x1-1/2"L	1
33	5630941	Oil Seal	TC15x35x7	1
34	5632031	RH Phillips screw	5/32"-32x3/8"L	3
35	5630961	Worm gear pulley		1
36	5630971	Blade tension guide block		1
37	5630981	Set screw	M8-P1.25x15mmL	1
38	5630991	Spiral pin	4x20L	1
39	5631001	Sliding plate draw block		1
40	5631011	Blade wheel shaft		1
41	5631021	Tension block		1
42	5631031	Guide block holder		2
43	5631041	Guard plate		1
44	5631051	Pulley guard		1
45	5631061	V-belt	A22	1
46	5631151	Lock washer	1/4"	1
47	5631311	Vent plug		1
48	5632081	Rubber plug		1
49	5521944	Cylinder upper bracket		1
50	5521951	Hex head screw	5/16"-18x7/8"L	2
51	5521952	Lock washer	5/16"	2
52	5632021	Hex head screw	1/4"-20x1/2"L	2
53	5521945	Tension guard		1

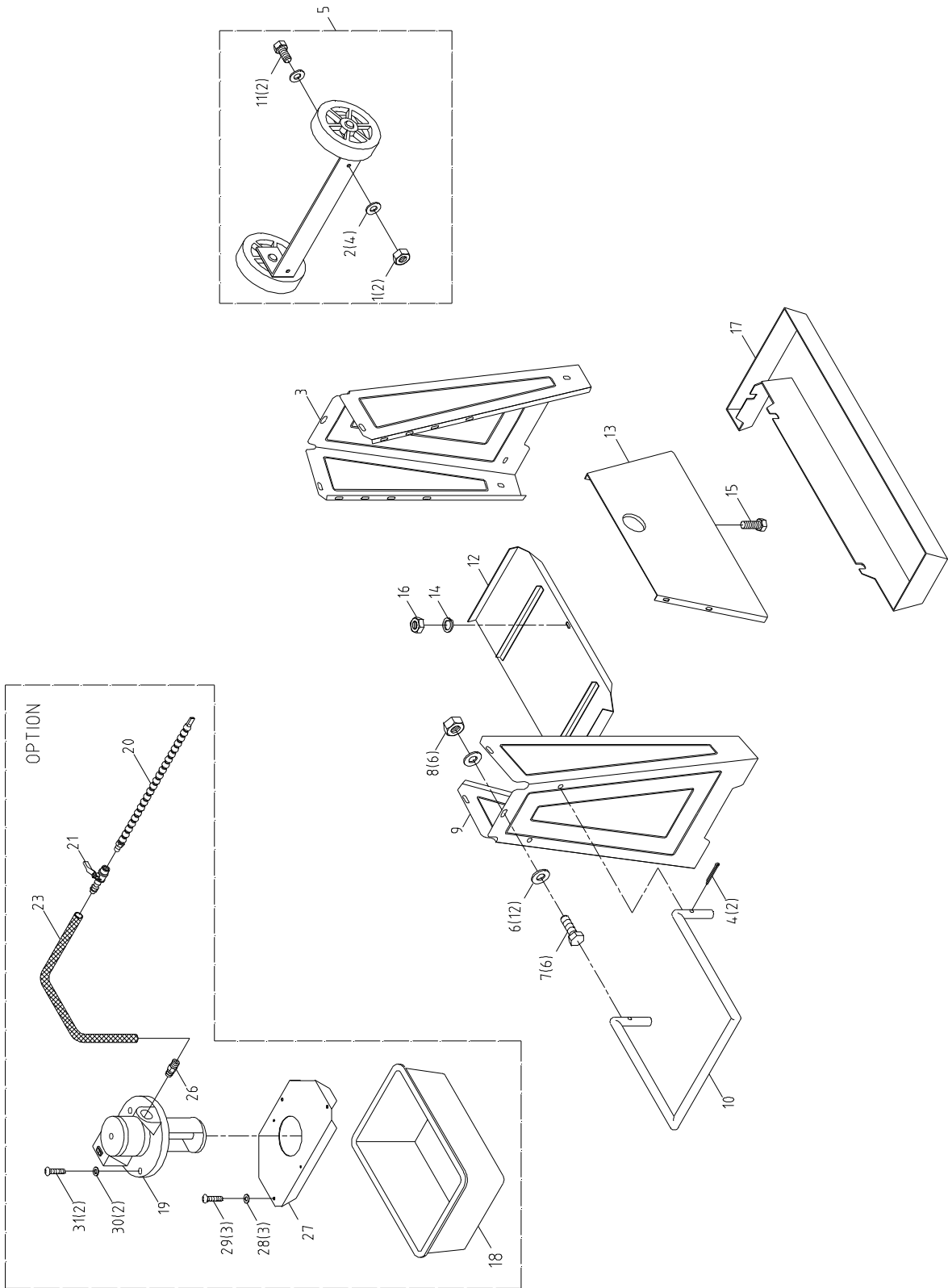
# Upper Saw Head – Exploded View



## Upper Saw Head – Parts List

Index No.	Part No.	Description	Size	Qty
01	5630221	Washer	1/4"x16xt1.5	1
02	5630051	Hex head screw	5/16"-18x1-1/4"L	2
03	5630301	Washer	3/8"x27xt3	3
04	5631471	RH Phillips screw	3/16"-24x3/8"L	4
05	5631481	Hex head screw	5/16"-18x3/4"L	3
06	5630461	Washer	5/16"x23xt3	1
07	563051A	Top guide bar		1
08	5630521	Knob		1
09	J-5630531	Blade guard cover		1
10	5630541	Retaining ring	5/16"x0.040	4
11	563055A	Bearing	608 and 629	6
12	563056A	Straight shaft		2
13	563050A	Eccentric shaft		2
14	563057A	Bearing pin shaft		2
15	563129A	Bearing bracket, right		1
15-1	5521954	Bearing bracket, left		1
16	563059A	Bottom guide bar		1
17	5630601	Hand knob	3/8"-16x31L	1
18	5630621	Flat head screw	1/4"-x20x1/2"L	1
19	5630631	Deflector plate		1
20	5630641	Hex Nut	3/8-16UNC	4
21	5630651	Drive wheel		1
21-1	TS-0270021	Socket set screw	5/16"-18x5/16"L	1
22	5630661	Wheel bearing Cover		1
23	5630711	Idler wheel		1
24	5630821	Ball bearing	6202ZZ	2
27	5632031	RH Phillips screw	5/32"-32x1/4"L	5
28	5632041	Washer	5/16"x2mm	1
28-1	TS-0720081	Lock washer, medium	5/16"	1
29		Blade (local purchase)	14Tx1/2x.025x68	1
30	5631081	Split lock washer	3/8"	4
31	5631121	Bushing		1
32	5632051	Drive wheel bushing		1
33	5631341	Retainer ring		1
34	5630721	Bushing		1
35	J-563120A	Bottom blade guard		1
36	J-5631211	Upper blade guard		1
38	5631231	Bracket		1
39	5630261	Aluminum head screw	5/16"-18x1-1/4"L	1
40	5632131	Set screw	1/4"-20x3/8"L	1
41	5631371	Bottom blade guide assembly		1
42	5631361	Top blade guide assembly		1
43	5518413	C-Ring	S15	1

# Stand and Coolant System – Exploded View





## Stand and Coolant System – Parts List

Index No.	Part No.	Description	Size	Qty
01	5631431	Hex nut	1/4"-20	2
02	5630221	Washer	1/4"x16xt1.5	4
03	J-5630041	Right floor stand		1
04	5631441	Cotter pin	1/8"x1"L	2
05	5633021	Wheel assembly		1
06	5630031	Washer	5/16"x23xt2	12
07	5630051	Hex head screw	5/16"-18x1-1/4"L	6
08	5630061	Hex nut	5/16"-18	6
09	J-5630071	Left floor stand		1
10	5631461	Handle		1
11	5632021	Hex head screw	1/4"-20x1/2"L	2
12	J-5631191	Tray		1
13	J-5631181	Skirt		1
14	5631151	Lock washer	1/4"	1
15	5632071	Carriage bolt	1/4"-20x1/2"	1
16	5630021	Hex nut	1/4"-20	1
17	J-5631171	Trough		1
18	J-5042291	Tank		1
19	J-5042281A	Coolant pump		1
20	5042341	Nozzle		1
21	5042351	Valve		1
22	5049361	Divider		1
23	9307291	Hose		1
24	5042331	Nipple		1
25	5042321	Nipple		1
26	5042981	Elbow		1
27	3230-0527	Support Plate		1
28	TS-1550031	Washer	M5	3
29	TS-1533042	Screw	M5 x10L	3
30	TS-1551041	Spring Washer	M6	2
31	TS-1534052	Pan Head Screw	M6x15L	2
	5056840	Wet Kit, 115V (includes #18-21,23,26-31)		