



Operating Instructions and Parts Manual

Metal/Wood Working MWEVS Band Saw

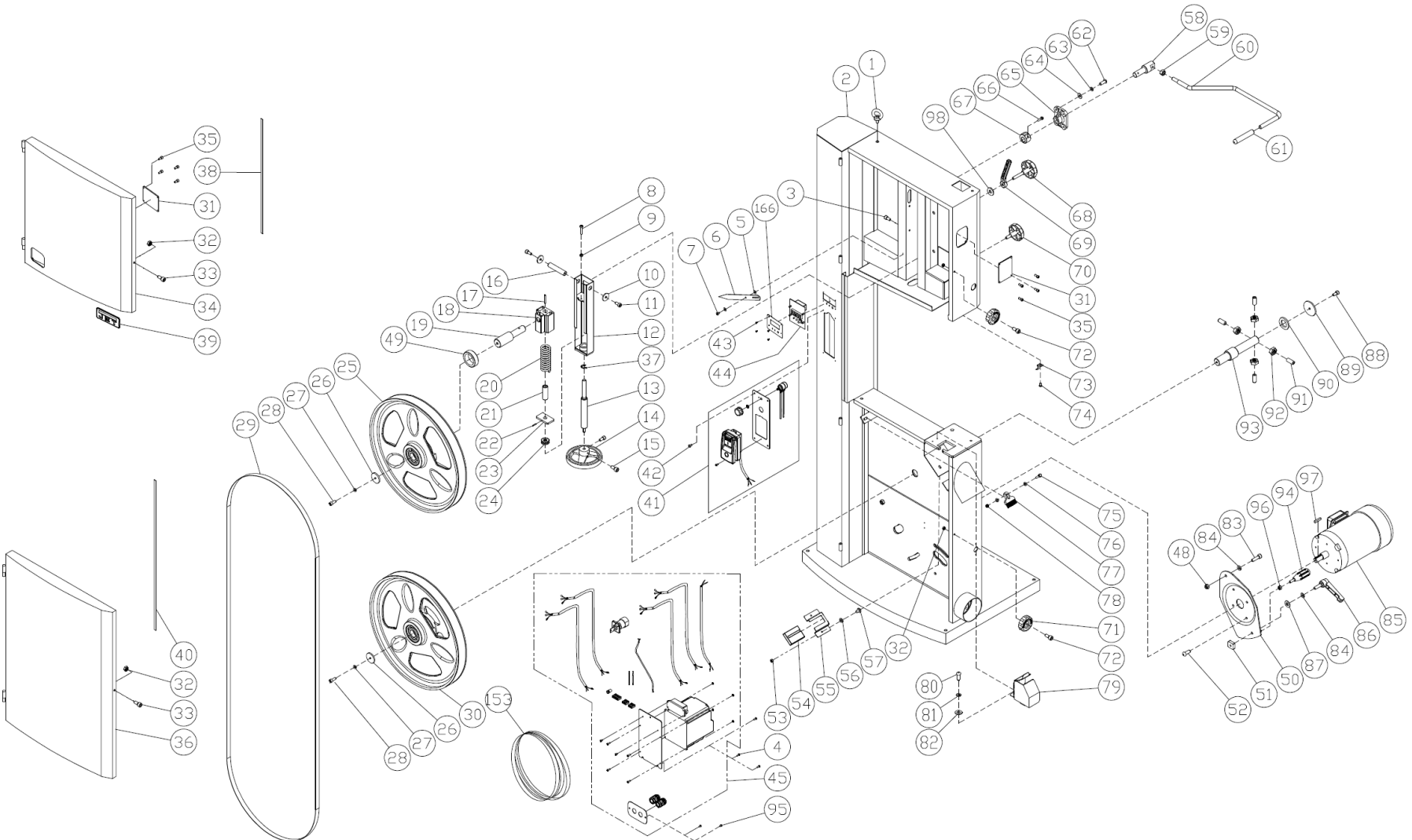
Model VBS-18MWEVS

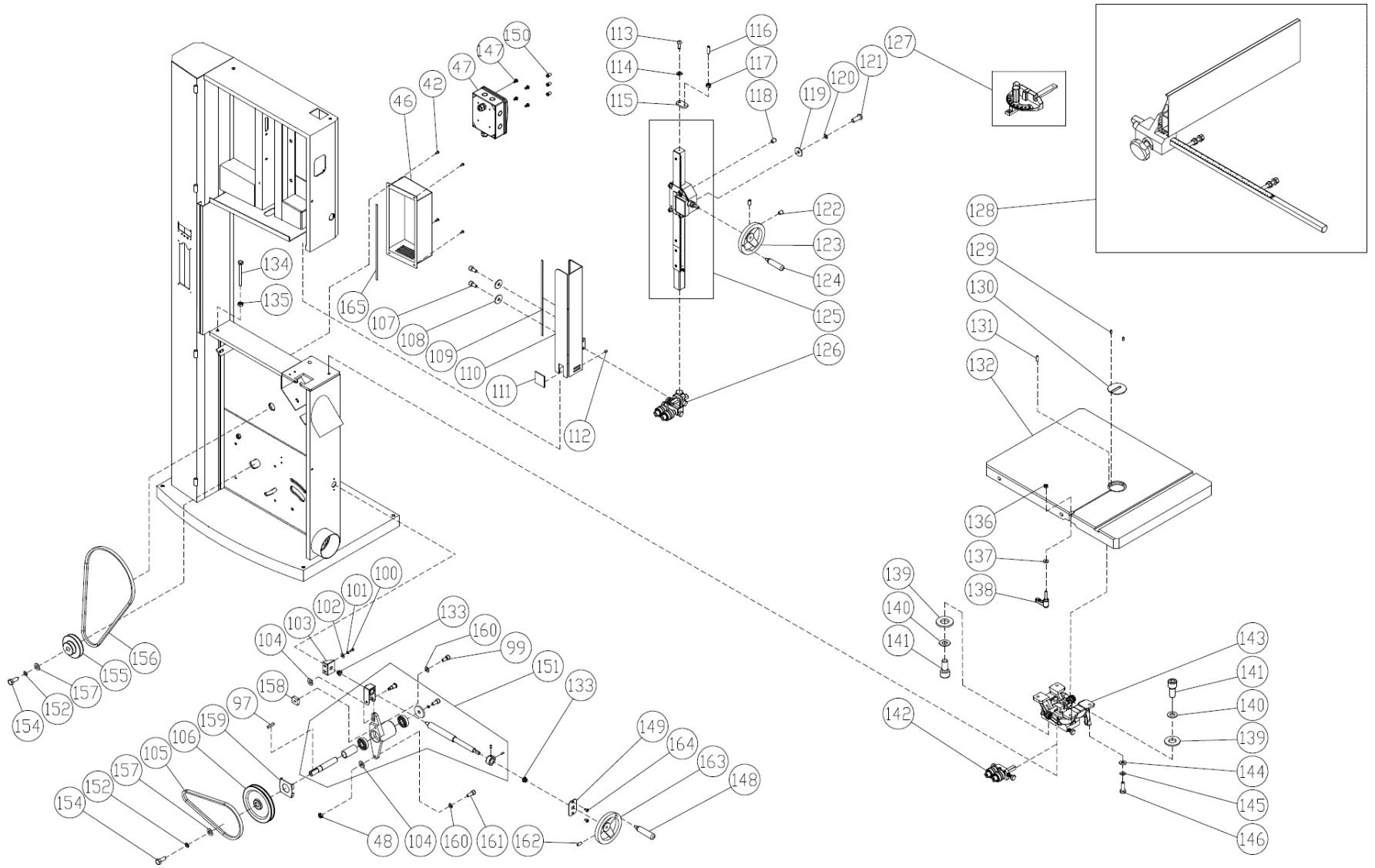


JET
427 New Sanford Road
LaVergne, Tennessee 37086
Ph.: 800-274-6848
www.jettools.com

Part No. M-414428
Edition 1 06/2021
Copyright © 2021 JET

18.1.1 VBS-18MWEVS MW/WW Band saw Assembly – Exploded View





18.1.2 VBS-18MWEVS WW/MW Band saw Assembly – Parts List

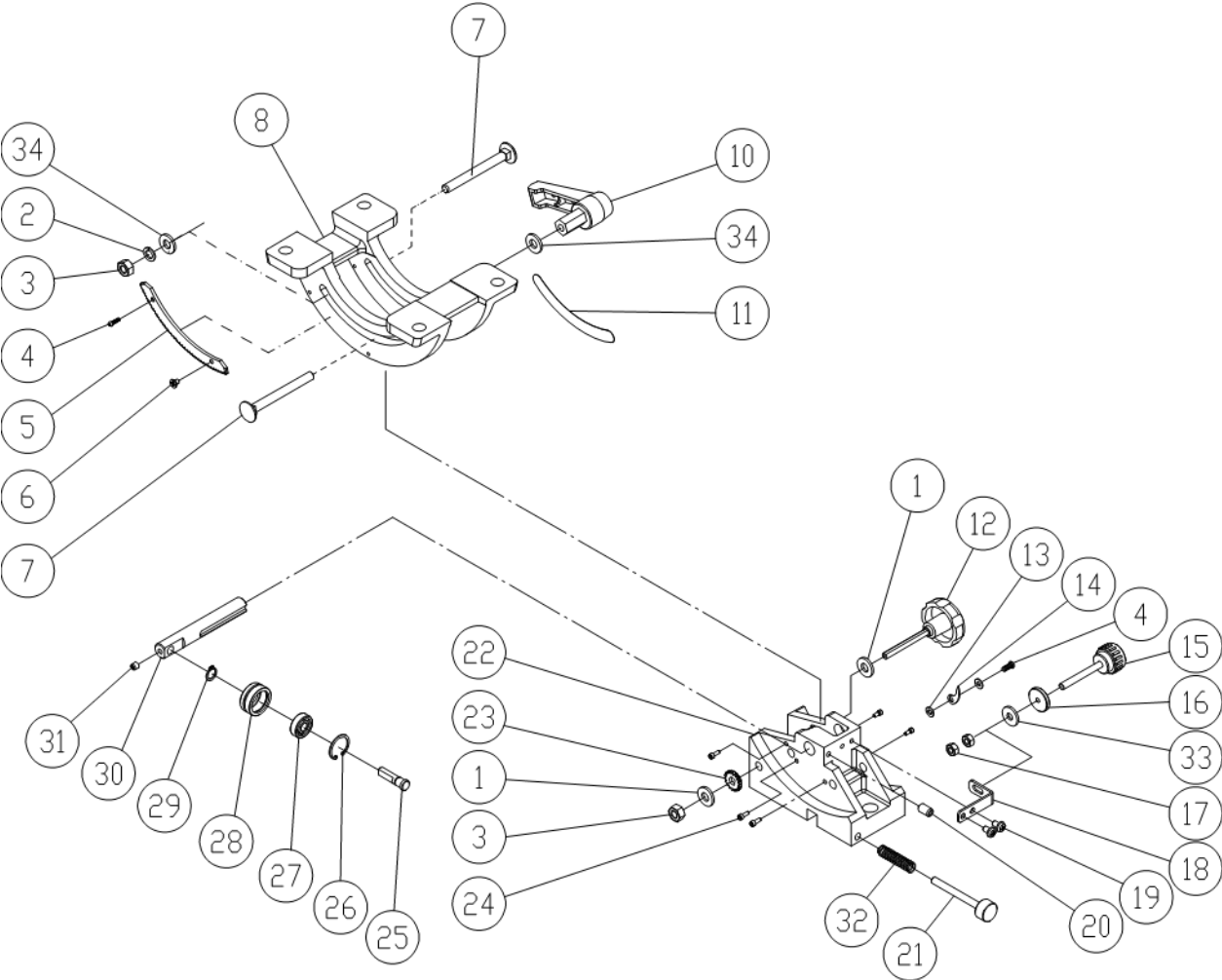
Index No.	Part No.	Description	Size	Qty
1	PM1500-004	Lifting Ring	M10	1
2	VBS-18MWEVS-002	Machine Main Body Frame		1
3	TS-1482021	Hex Cap Bolt	M6x12	1
4	TS-1533032	Pan Head Screw	M5x10	3
5	TS-1550041	Flat Washer	M6	2
6	JWBS18B-106	Tension Pointer		1
7	PM1500-012	Step Screw		1
8	TS-1503111	Socket Head Cap Screw	M6x50	1
9	TS-2311061	Hex Nut	M6	1
10	TS-1550061	Flat Washer	M8	2
11	TS-1504031	Socket Head Cap Screw	M8x16	2
12	JWBS15-112	Upper Wheel Sliding Bracket		1
13	JWBS18B-113	Adjusting Bolt		1
14	JWBS15-114	Hand wheel	6"	1
15	TS-1503051	Socket Head Cap Screw	M6x20	2
16	JWBS15-116	Upper Shaft		1
17	JWBS15-117	Spring Pin	Ø5x36mm	1
18	JWBS15-118	Upper Wheel Sliding Bracket		1
19	JWBS18B-119	Upper Wheel Shaft		1
20	JWBS15-120	Spring		1
21	PM1500-010-02	Bushing		1
22	JWBS15-122	Pin	Ø 3x20mm	1
23	JWBS15-123	Locate Block		1
24	BB-51201	Bearing	51201	1
25	PM1800B-018	Upper Wheel Assembly	Ø18"	1
26	PM1800B-017	Washer		2
27	TS-2361081	Spring Washer	M8	2
28	TS-1504041	Socket Head Cap Bolt	M8x20	2
29	JWBS18B-129	Wood Working Saw Blade	150"L x 3/4" x 0.026" T x 6 TPI	1
30	VBS-18MWEVS-030	Lower Wheel Assembly	Ø18"	1
31	PM1500-050	Viewing Window		2
32	TS-1541021	Hex Nut Nylon Lock	M6	4
33	TS-1503021	Socket Head Cap Screw	M6x10	2
34	JWBS18B-134	Upper Door		1
35	JWBS15-135	Socket Head Cap Screw	M4x8	8
36	JWBS18B-136	Lower Door		1
37	PM1800B-027-026	Retaining Ring (E)	E15	1
38	JWBS15-138	Sponge		1
39	JET-203-R2000	JET Logo	203mm	1
40	JWBS15-140	Sponge	760x10x1T mm	1
41	VBS-18MWEVS-041	Speed control & Switch assembly		1
42	TS-2244102	Socket Head Button Screw	M5x10	8
43	TS-2283102	Pan Head Screw	M3x10	4
44	VBS-18MWEVS-044	Digital Display PC board		1

45	VBS-18MWEVS-045	AC Inverter Assembly	1
46	VBS-18MWEVS-046	Out Cover	1
47	VBS-18MWEVS-047	Wiring Box	1
48	TS-1541041	Hex Nut Nylon Lock M10	2
49	JWBS18B-1147	Bushing	1
50	JWBS15-1104	Motor Bracket	1
51	PM1500-038	Motor Bracket	1
52	TS-2248202	Socket Head Button Screw M8x20	4
53	TS-2311061	Hex Nut M6	2
54	JWBS18DX-249	Dust Collect Insert	1
55	JWBS15-155	Fixed Plate	1
56	TS-2361061	Spring Washer M6	2
57	TS-2246122	Socket Head Button Screw M6x12	2
58	PM1500-074	Tension Quick Release Lever Shaft	1
59	TS-1540083	Hex Nut M12	1
60	JWBS18B-160	Tension Quick Release Lever	1
61	JWBS15-161	Grip	1
62	TS-2248202	Socket Head Button Screw M8x20	4
63	TS-2361081	Spring Washer M8	4
64	TS-1550061	Flat Washer M8xØ18	4
65	PM1500-070	Shaft Fixed Block	1
66	TS-1503061	Socket Head Cap Screw M6x25	1
67	PM1500-069	Cam	1
68	JWBS15-168	Lock Knob M10x53	1
69	PM1500-068	Lock Handle M10	1
70	JWBS15-170	Lock Knob M10x25	1
71	135041	Knob	2
72	TS-1503051	Socket Head Cap Screw M6x20	2
73	JWBS15-173	Pointer	1
74	6286494	Pan Head Screw M5x6	1
75	TS-1482051	Hex Cap Screw M6x25	1
76	TS-1550041	Flat Washer M6	2
77	PM1500-058	Brush	1
78	TS-1541021	Hex Nut Nylon Lock M6	1
79	JWBS18B-179	Lower Blade Guard	1
80	TS-2246102	Socket Head Button Screw M6x10	2
81	TS-2361061	Lock Washer M6	2
82	TS-1550041	Flat Washer M6	2
83	TS-149105	Hex Cap Screw M10x35	1
84	TS-2361101	Lock Washer M10	2
85	VBS-18MWEVS-085	Motor 2HP/3PH/60Hz/220V	1
	VBS-18MWEVS-085CF	Motor Coolant Fan (not shown)	1
	VBS-18MWEVS-085CFC	Motor Fan Cover (not shown)	1
	VBS-18MWEVS-085JB	Junction Box with Cover (not shown)	1
86	PM1500-015	Motor Bracket Lock Handle M10x33	1
87	TS-1550071	Flat Washer M10xØ20	1
88	TS-1504041	Socket Head Cap Screw M8x20	1

89	PM1800B-088	Washer		1
90	PM1800B-087	Plate		1
91	TS-2279301	Set Screw	M10x30	4
92	TS-1541041	Hex Nut	M10	4
93	VBS-18MWEVS-093	Lower Wheel Shaft		1
94	JWBS15-197	Motor Bracket Handle		1
95	PM1500-039	Tapping Screw	M4x8	2
96	TS-1540061	Hex Nut	M8	1
97	VBS-18MWEVS-097	Key	5x5x35	2
98	TS-1550071	Flat Washer	M10	1
99	TS-1505061	Socket Head Cap Screw	M10x40	1
100	TS-1503041	Socket Head Cap Screw	M6x16	2
101	TS-2361061	Lock Washer	M6	2
102	TS-1550041	Flat Washer	M6	2
103	VBS-18MWEVS-103	Fixed Stand		1
104	TS-1550071	Flat Washer	M10	2
105	VBS-18MWEVS-105	V-Belt	A28	1
106	VBS-18MWEVS-106	Pulley		1
107	TS-1503041	Socket Head Cap Screw	M6x16	2
108	TS-1550041	Flat Washer	M6	2
109	JWBS15-1109	Magnet	7x340mm	1
110	JWBS18B-1110	Blade Guard Cover		1
111	PM1800B-093	Viewing Window		1
112	TS-1521011	Set Screw	M4x4	2
113	TS-2246122	Socket Head Button Screw	M6x12	1
114	TS-2361061	Spring Washer	M6	1
115	PM1800B-163	Locate Plate		1
116	F010432	Set Screw	M6x35	1
117	TS-1540041	Hex Nut	M6	1
118	5302731	Set Screw	M8x6	4
119	TS-1550061	Flat Washer	M8	4
120	TS-2361081	Spring Washer	M8	4
121	TS-2248202	Socket Head Button Screw	M8x20	4
122	TS-1523041	Set Screw	M6x12	2
123	JWBS15-1118	Hand wheel	5"	1
124	JWBS15-1119	Handle	M8	1
125	JWBS18B-1125	Guide Bar Bracket Assembly		1
126	JWBS18B-1126	Upper Blade Guide Assembly		1
127	JWBS15-1122	Miter Gauge Assembly		1
128	JWBS18B-1128	Rip Fence Assembly		1
129	F012085	Roll Pin	Ø4x8 mm	2
130	JWBS15-1125	Table Insert		1
131	TS-1522011	Set Screw	M5x5	3
132	JWBS18B-1132	Table		1
133	VBS-18MWEVS-133	Self Lubricating Bearing		2
134	7015-48	Set Screw	M10x110	1
135	TS-2311101	Hex Nut	M10	1

136	TS-1540061	Hex Nut	M8	1
137	TS-1550061	Flat Washer	M8xφ20	1
138	JWBS18B-1138	Handle	M8x35	1
139	TS-1550071	Flat Washer	M10	2
140	TS-2361101	Spring Washer	M10	2
141	TS-1505051	Socket Head Cap Screw	M10x35	2
142	JWBS18B-1142	Lower Blade Guide Assembly		1
143	JWBS15-1138	Trunnion Support Bracket Assembly		1
144	TS-1550061	Flat Washer	M8	4
145	TS-2361081	Spring Washer	M8	4
146	TS-1490041	Hex Cap Screw	M8x25	4
147	TS-1533032	Phillips Pan Head Screw	M5x10	4
148	VBS-18MWEVS-148	Handle	M8	1
149	VBS-18MWEVS-149	Fix Plate		1
150	VBS-18MWEVS-150	Wiring Nut	P2	3
151	VBS-18MWEVS-151	Bearing Stand Assembly		1
152	TS-2361101	Lock Washer	M8	2
153	VBS-18MWEVS-153	Metal Working Saw Blade	150"x3/4"x0.03"x8TPI	1
154	TS-1490031	Hex Cap Screw	M8x20	2
155	VBS-18MWEVS-155	Motor Pulley		1
156	VBS-18MWEVS-156	V-Belt	A46	1
157	TS-1550061	Flat Washer	M8xφ30	2
158	VBS-18MWEVS-158	Locate Block		1
159	VBS-18MWEVS-159	Bearing Stand Plate		1
160	TS-2361101	Lock Washer	M10	3
161	TS-1491031	Hex Cap Screw	M10x25	1
162	TS-1503041	Socket Head Cap Screw	M6x16	1
163	VBS-18MWEVS-163	Hand Wheel	5", Steel	2
164	TS-1534032	Pan Head Screw	M6x10	2
165	VBS-18MWEVS-165	Sponge		1
166	VBS-18MWEVS-166	Speed Display Panel		1

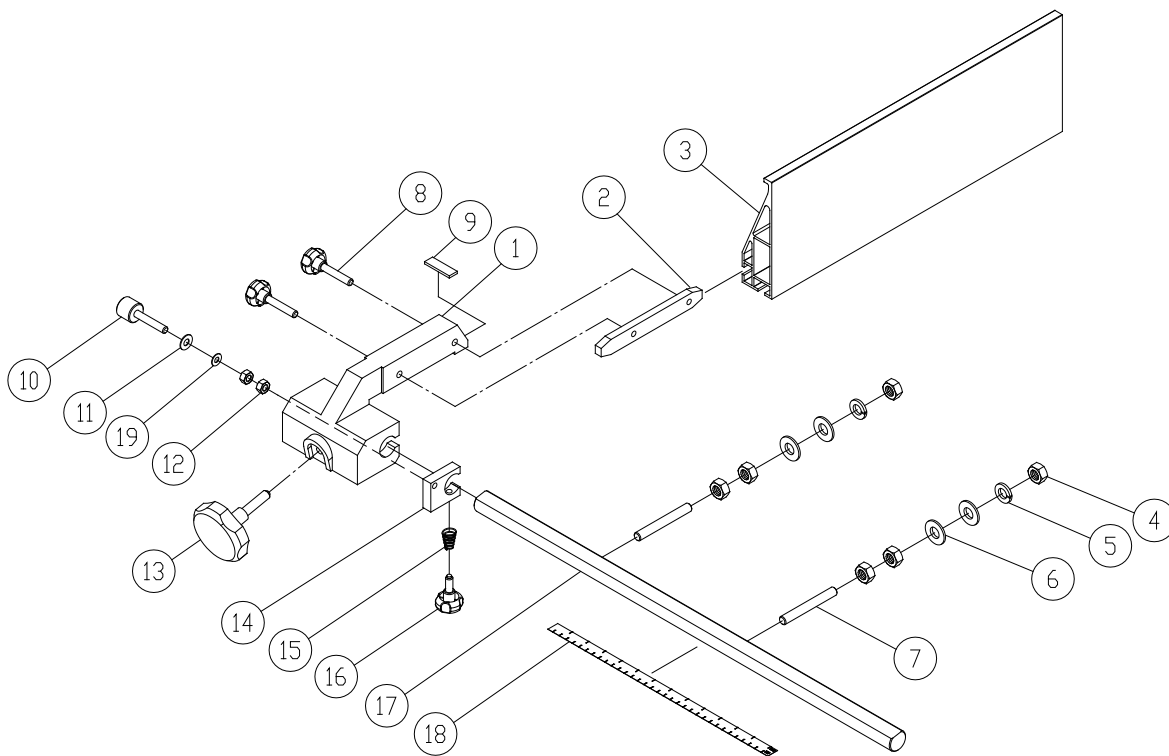
18.2.1 VBS-18MWEVS Trunnion Support Bracket Assembly – Exploded View



18.2.2 VBS-18MWEVS Trunnion Support Bracket Assembly – Parts List

Index No	Part No	Description	Size	Qty
	JWBS15-1138A	Trunnion Support Bracket Assembly (#1 thru 34)		
1	TS-1550061	Flat Washer	M8 x Ø23	2
2	TS-2361081	Lock Washer	M8	1
3	TS-1541031	Nylon Lock Hex Nut	M8	2
4	TS-2171012	Phillips Pan Head Machine Screw	M4x6	2
5	PM1500-085-05	Gear Rack		1
6	TS-2284061	Phillips Flat Head Machine Screw	M4x6	1
7	JWBS15-1138-307	Carriage Bolt	M8x90	2
8	PM1500-085-08	Trunnion Block		1
10	JWBS15-1138-310	Lock Handle		1
11	PM1500-085-11	Tilt Scale		1
12	PM1500-085-12	Adjustment Knob Bolt		1
13	TS-1550021	Flat Washer	M4 x Ø8	2
14	PM1500-085-14	Angle Pointer		1
15	JWBS15-1138-315	Adjustment Knob Bolt	M6	1
16	PM1500-085-16	Locking Ring		1
17	TS-2311061	Hex Nut	M6	2
18	PM1500-085-18	Adjustment Plate		1
19	5712561	Phillips Pan Head Machine Screw	M5x8	2
20	PM1500-085-20	Set Screw		1
21	PM1500-085-21	Lock Knob		1
22	JWBS15-1138-322	Trunnion Support Bracket		1
23	PM1500-085-23	Gear		1
24	TS-2235061	Socket Head Cap Screw	M5x6	6
25	PM1500-085-25	Adjustment Shaft		1
26	PM1500-085-26	Retaining Ring	R22	1
27	BB-608ZZ	Ball Bearing	608ZZ	1
28	PM1500-085-28	Thrust Bearing Holder		1
29	PM1500-085-29	Retaining Ring	S8	1
30	JWBS15-1138-330	Adjustment Bar		1
31	TS-1523011	Socket Set Screw	M6x6	1
32	JWBS15-1138-332	Spring		1
33	TS-1550041	Flat Washer	M6 x Ø19	1
34	JWBS15-1138-334	Flat Washer	M8 x Ø23x5t	2

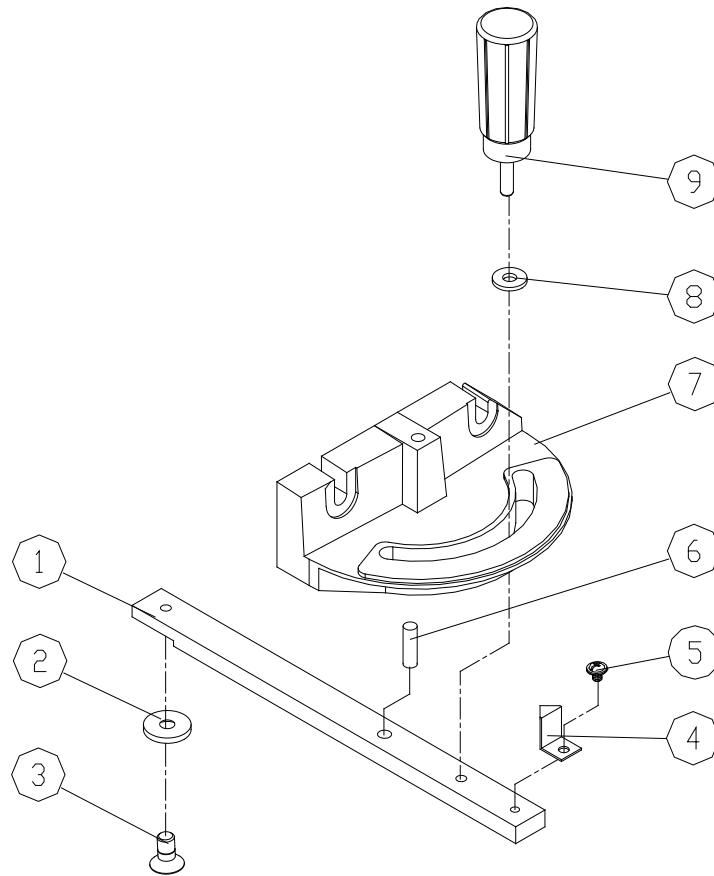
18.3.1 VBS-18MWEVS Rip Fence Assembly – Exploded View



18.3.2 VBS-18MWEVS Fence Assembly – Parts List

Index No.	Part No.	Description	Size	Qty
	JWBS18B-1128	Rip Fence Assembly (#1 thru 18)		
1	JWBS15-1123-201	Fence Body		1
2	JWBS15-1123-202	Lock Block		1
3	JWBS18B-1128-203	Aluminum Fence	572mm	1
4	TS-2311101	Nut	M10	6
5	TS-2361101	Spring Washer	M10	2
6	TS-1550071	Flat Washer	M10	4
7	JWBS15-1123-207	Set Screw	M10x80	2
8	JWBS15-1123-208	Knob	M8x40	2
9	PM1500-107-10	Nylon Pad		1
10	JWBS15-1123-210	Adjustment Knob	M8x50	1
11	JWBS15-1123-211	Fiber Washer		1
12	TS-1540061	Nut	M8	2
13	JWBS15-1123-213	Knob	M8x40	1
14	JWBS15-1123-214	Locate Block		1
15	PM1800B-059-017	Cone Spring		1
16	JWBS15-1123-216	Knob	M6x14	1
17	JWBS18B-1128-217	Fence Guide Rail		1
18	JWBS18B-1128-218	Scale		1
19	JWBS15-1123-219	Wave Washer	Ø8x13 mm	1

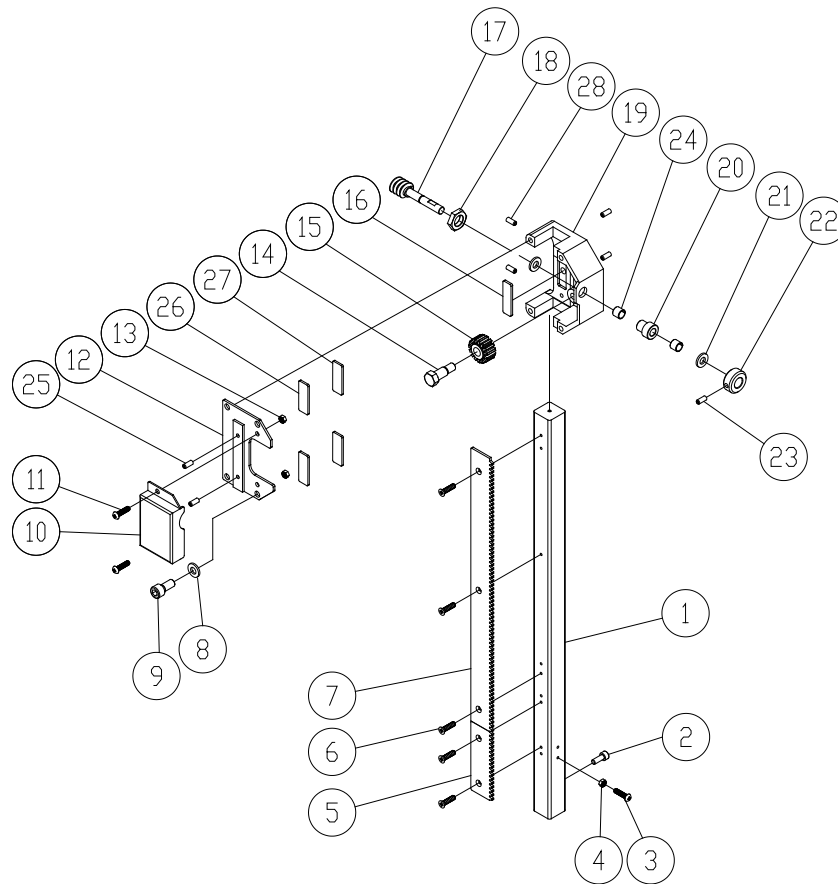
18.4.1 VBS-18MWEVS Miter Gauge Assembly – Exploded View



18.4.2 VBS-18MWEVS Miter Gauge Assembly – Parts List

Index No	Part No	Description	Size	Qty
	JWBS15-1122	Miter Gauge Assembly (#1 thru 9)		1
1	JWBS15-1122-701	Guide Bar		1
2	JWBS15-1122-702	Guide Piece		1
3	JWBS15-1122-703	Countersunk Bolt	M6x6	1
4	JWBS15-1122-704	Pointer		1
5	PWBS14-251-5	Pan Head Flanged Screw	M5x8	1
6	JWBS15-1122-706	Steel Pin	Ø6x10mm	1
7	JWBS15-1122-707	Miter Gauge Body		1
8	JWBS15-1122-708	Nylon Washer		1
9	JWBS15-1122-709	Handle		1

18.5.1 VBS-18MWEVS Guide Bar Bracket Assembly – Exploded View

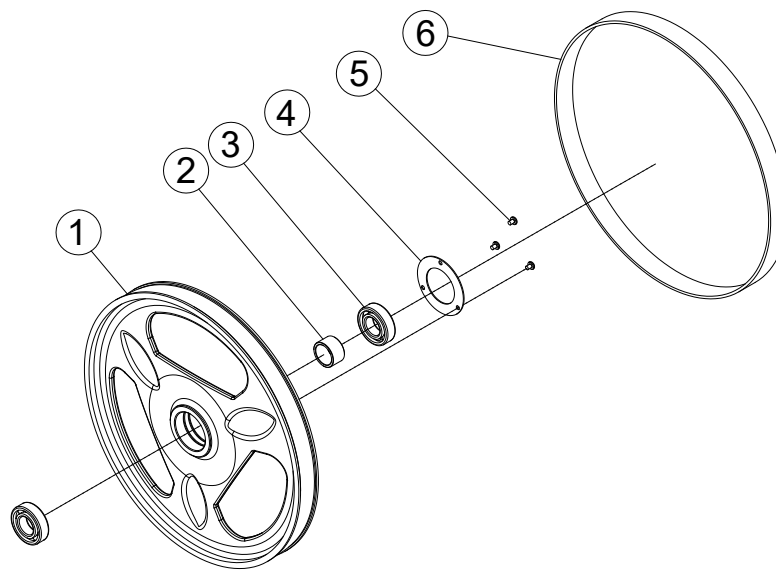


18.5.2 VBS-18MWEVS Guide Bar Bracket Assembly – Parts List

Index No	Part No	Description	Size	Qty
	JWBS18B-1125	Guide Bar Bracket Assembly (#1 thru 28)		
1	JWBS18B-1125-401	Guide Bar		1
2	TS-1503021	Socket Head Cap Screw	M6x10	2
3	TS-1532032	Pan Head Screw	M4x10	1
4	TS-1540021	Nut	M4	1
5	PM1500-091-08	Guide Bar Rack (Short)		1
6	TS-2284081	Phillips Flat Head Machine Screw	M4x8	5
7	PM1500-091-20	Guide Bar Rack (Long)		1
8	TS-2361081	Spring Washer	M8	4
9	TS-1504031	Socket Head Cap Screw	M8x16	4
10	PM1500-091-04	Cover		1
11	TS-1534041	Pan Head Screw	M5x10	2
12	JWBS18B-1125-412	Cover		1
13	TS-1540031	Hex Nut	M5	2
14	PM1500-091-10	Fixed Screw		1
15	PM1500-091-11	Gear		1
16	PM1500-091-12	Fixed Plate		1
17	PM1500-091-13	Worm Shaft		1

18	JWBS15-1120-418	Nut	1	
19	PM1500-091-15	Guide Bracket	1	
20	PM1500-091-18	Bushing	1	
21	PM1500-091-25	Fiber Washer	2	
22	PM1500-091-19	Collar	1	
23	TS-1522011	Set Screw	M5x5	2
24	JWBS15-1120-424	Bushing Bearing	DU 10x12	2
25	TS-1523011	Set Screw	M6x6	2
26	JWBS18B-1125-426	Plate	2	
27	JWBS18B-1125-427	Nylon Piece	2	
28	JWBS15-1120-425	Plastic Nylon Set Screw	M7x10	4

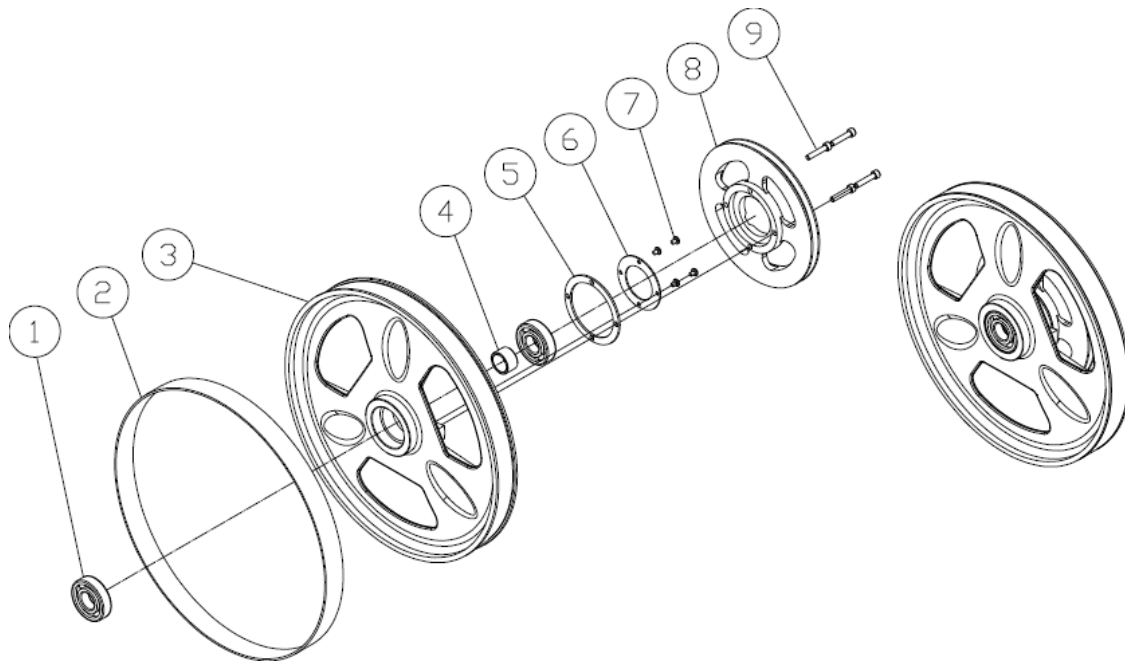
18.6.1 VBS-18MWEVS Upper Wheel Assembly – Exploded View



18.6.2 VBS-18MWEVS Upper Wheel Assembly – Parts List

Index No	Part No	Description	Size	Qty
	PM1800B-018	Upper Wheel Assembly (#1 thru 6)		
1	PM1800B-018-01	Upper Wheel		1
2	PM1800B-018-02	Spacer		1
3	BB-6306LLU	Ball Bearing	6306LLU	2
4	PM1800B-018-04	Bearing Press Plate		1
5	PM1800B-018-05	Phillips Pan Head Machine Screw	M6 x 8	3
6	PM1800B-018-06	Tire		1

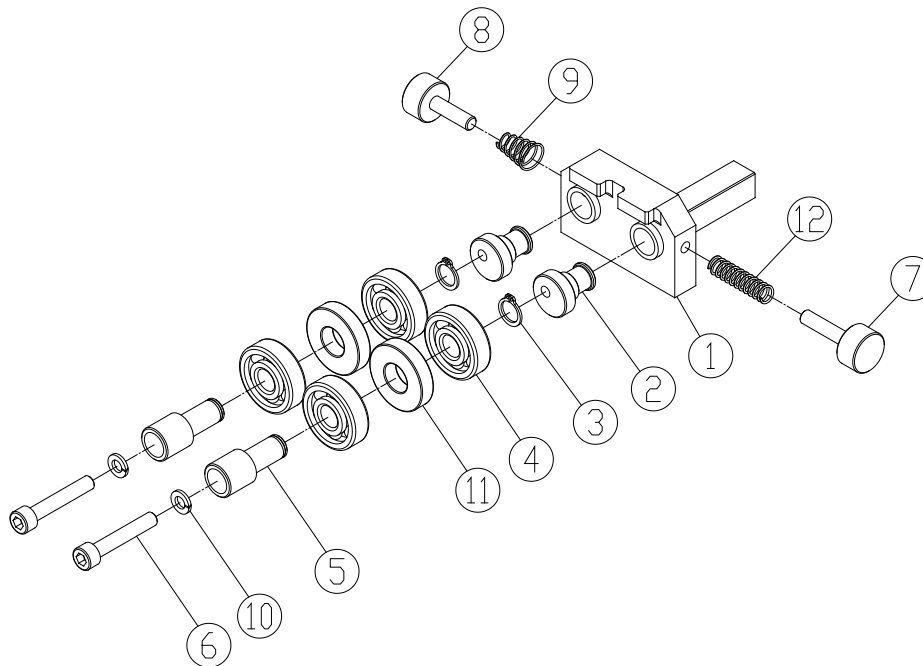
18.7.1 VBS-18MWEVS Lower Wheel Assembly – Exploded View



18.7.2 VBS-18MWEVS Lower Wheel Assembly – Parts List

Index No	Part No	Description	Size	Qty
	VBS-18MWEVS-030	Lower Wheel Assembly (#1 thru 9)		
1	BB-6306LLU	Ball Bearing	6306LLU	2
2	PM1800B-018-06	Wheel Tire	PU	1
3	VBS-18MWEVS-030-03	Lower Wheel	18"	1
4	VBS-18MWEVS-030-04	Bushing		1
5	VBS-18MWEVS-030-05	Gasket		1
6	VBS-18MWEVS-030-06	Bearing Press Plate		1
7	VBS-18MWEVS-030-07	Phillips Pan Head Machine Screw	M6x6	4
8	VBS-18MWEVS-030-08	Pulley		1
9	TS-2248402	Socket Head Button Screw	M8x40	4

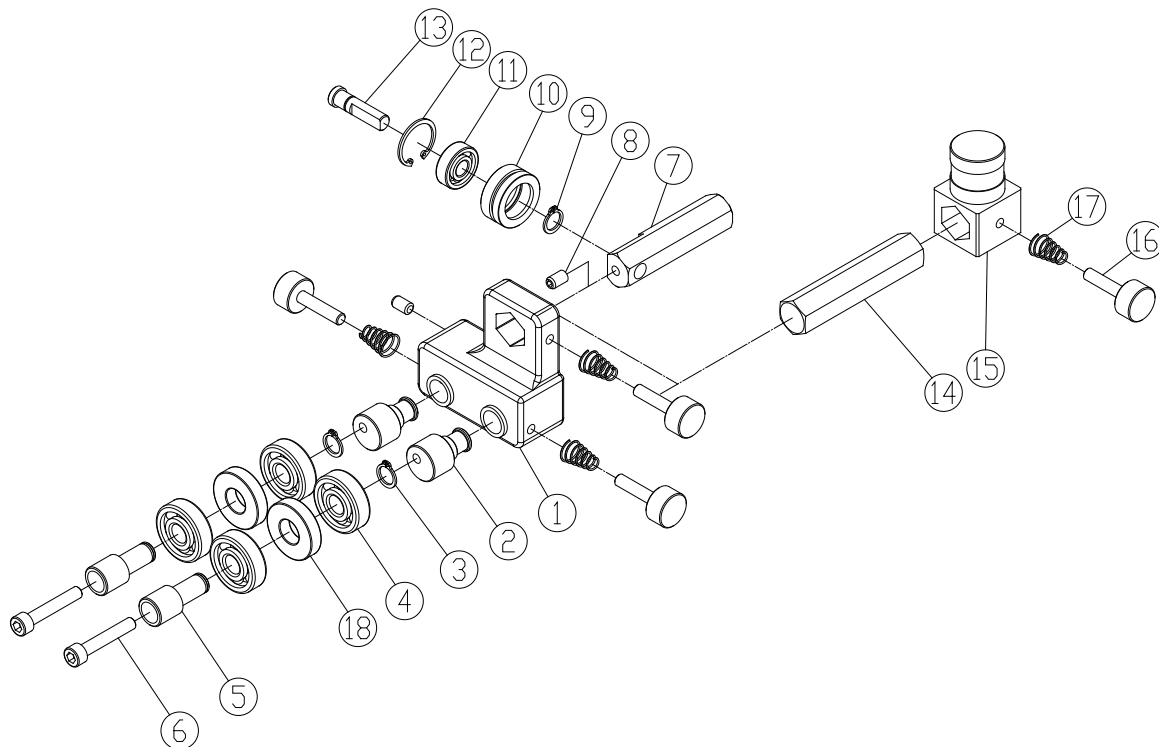
18.8.1 VBS-18MWEVS Lower Blade Guide Assembly – Exploded View



18.8.2 VBS-18MWEVS Lower Blade Guide Assembly – Parts List

Index No	Part No	Description	Size	Qty
	JWBS18B-1142	Lower Blade Guide Assembly (#1 thru 12)		
1	PM1500-096-01	Lower Blade Guide Support		1
2	PM1500-096-02	Eccentric Shaft		2
3	PM1800B-059-05	Retaining Ring	S15	2
4	BB-6202ZZ	Ball Bearing	6202ZZ	4
5	PM1800B-059-02	Knurled Adjusting Knob		2
6	TS-1503101	Socket Head Cap Screw	M6x45	2
7	PM1500-095-16	Lock Knob		1
8	JWBS15-1137-508	Lock Knob		1
9	PM1800B-059-017	Cone Spring		1
10	TS-2361061	Spring Washer	M6	2
11	PM1800B-059-04	Spacer		2
12	JWBS15-1138-332	Spring		1

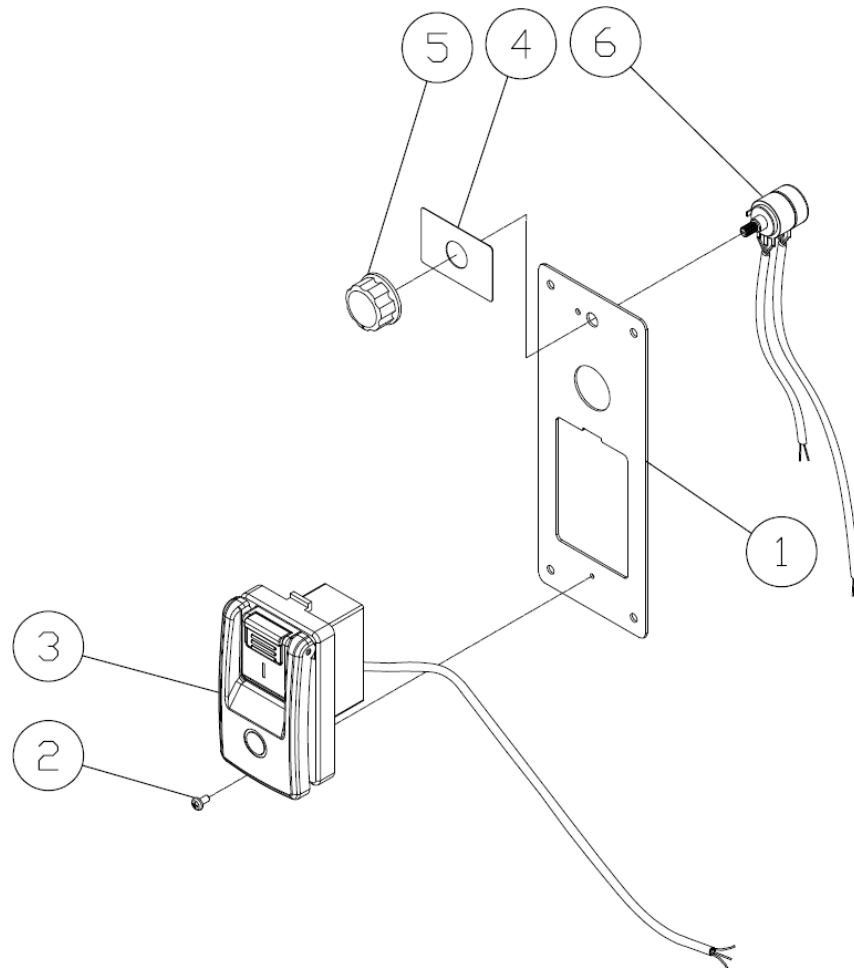
18.9.1 VBS-18MWEVS Upper Blade Guide Assembly – Exploded View



18.9.2 VBS-18MWEVS Upper Blade Guide Assembly – Parts List

Index No	Part No	Description	Size	Qty
	JWBS18B-1126	Upper Blade Guide Assembly (#1 thru 18)		
1	PM1500-095-01	Upper Blade Guide Support		1
2	PM1500-095-02	Eccentric Shaft		2
3	PM1800B-059-05	Retaining Ring	S15	2
4	BB-6202ZZ	Ball Bearing	6202ZZ	4
5	PM1800B-059-02	Knurled Knob		2
6	TS-1503101	Socket Head Cap Screw	M6x45	2
7	PM1500-095-07	Spacing Sleeve		1
8	TS-1523011	Set Screw	M6x6	2
9	PM1500-085-29	Retaining Ring	S8	1
10	PM1500-085-28	Thrust Bearing Holder		1
11	JWBS15-1121-611	Ball Bearing	608ZZ	1
12	PM1500-085-26	Retaining Ring	R22	1
13	PM1500-085-25	Adjust Shaft		1
14	PM1500-095-14	Hex Post		1
15	PM1500-095-15	Upper Guide Support Block		1
16	PM1500-095-16	Lock Knob		1
17	PM1800B-059-017	Cone Spring		4
18	PM1800B-059-04	Spacer		2

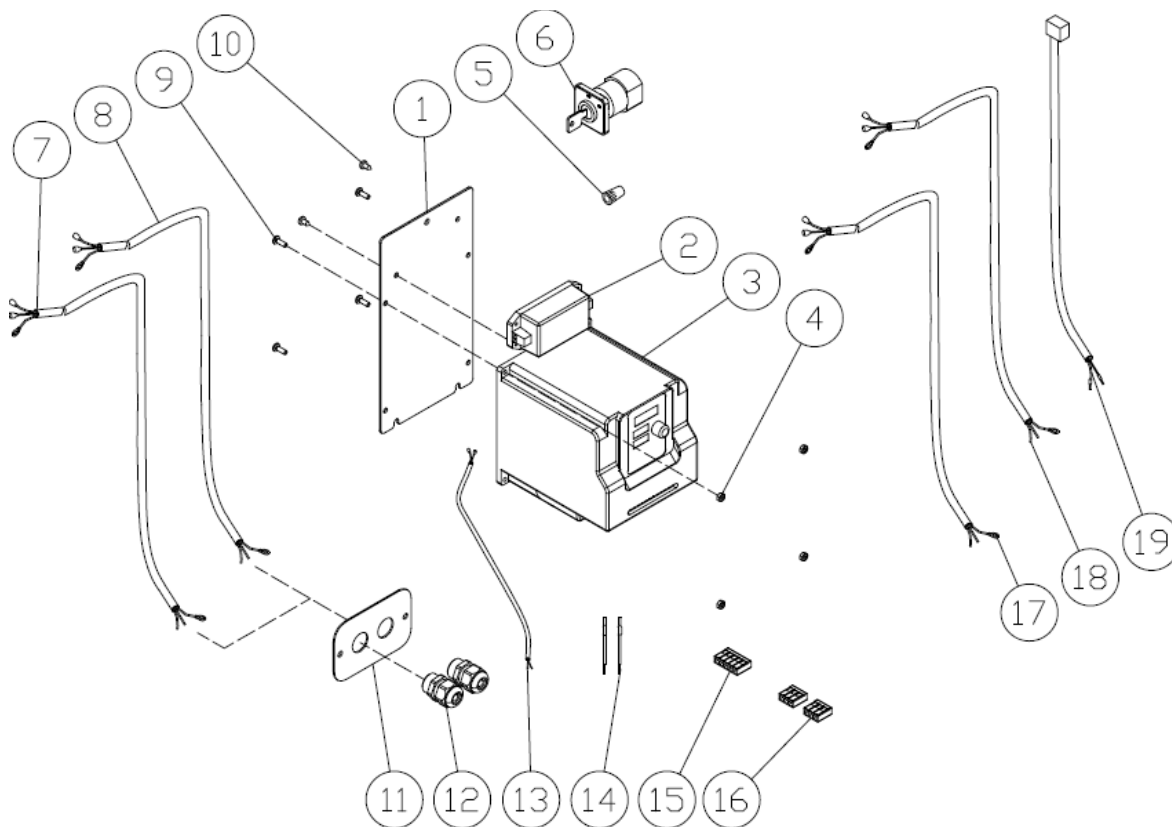
18.10.1 VBS-18MWEVS Speed control & Switch assembly – Exploded View



18.10.2 VBS-18MWEVS Speed control & Switch assembly – Parts List

Index No	Part No	Description	Size	Qty
	VBS-18MWEVS-041	Speed control & Switch assembly (#1 thru 6)		1
1	VBS-18MWEVS-041-01	Switch Plate		1
2	TS-2284081	Phillips Pan Head Machine Screw	M4x8	1
3	VBS-18MWEVS-041-03	Control Switch Assembly		1
4	VBS-18MWEVS-041-04	Speed Knob Label		1
5	VBS-18MWEVS-041-05	Speed Adjustment Knob		1
6	VBS-18MWEVS-041-06	Variable Resistance		1

18.11.1 VBS-18MWEVS AC Inverter Assembly – Exploded View



18.11.2 VBS-18MWEVS AC Inverter Assembly – Parts List

Index No	Part No	Description	Size	Qty
	VBS-18MWEVS-045	AC Inverter Assembly (#1 thru 16)		1
1	VBS-18MWEVS-045-01	Inverter Mounted Plate		1
2	VBS-18MWEVS-045-02	Power Supply	O/P+24V/1.3A	1
3	VBS-18MWEVS-045-03	Inverter	220V 2HP	1
4	TS-1540021	Hex Nut	M4	4
5	VBS-18MWEVS-150	Wiring Nut	P2	1
6	VBS-18MWEVS-045-06	Switch Key		1
7	VBS-18MWEVS-045-07	Motor Cord		1
8	VBS-18MWEVS-045-08	Motor Cooling Fan cord		1
9	TS-1532042	Phillips Pan Head Screw	M4x12	4
10	VBS-18MWEVS-045-10	Iron Screw	M4x8	2
11	VBS-18MWEVS-045-11	Strain Relief Plate		1
12	PM1500-062	Strain Relief	PG-13.5	2
13	VBS-18MWEVS-045-13	Power Cord		1
14	VBS-18MWEVS-045-14	Inverter Connect Line	8mm	2
15	VBS-18MWEVS-045-15	Cord Connector	221-415(5P)	1
16	VBS-18MWEVS-045-16	Cord Connector	221-413(3P)	2
17	VBS-18MWEVS-045-17	Power Cord		1
18	VBS-18MWEVS-045-18	Power Cord		1
19	VBS-18MWEVS-045-19	PCB Power Cord		1