



# SERVICE PARTS LIST

**BUL. 54-16-3040**

## TWO SPEED DYMODRILL

REVISED BUL. 6346-1      DATE Sept. '73

**Catalog No. 4035**

Starting Serial No. **346-1001**

WIRING INSTRUCTIONS  
**58-01-0390**

Specify Catalog and Serial No. when ordering parts

ILLUSTRATION ON REVERSE SIDE

FOR 230V TOOL USE:  
16-86-1621 ARMATURE  
18-86-1060 FIELD

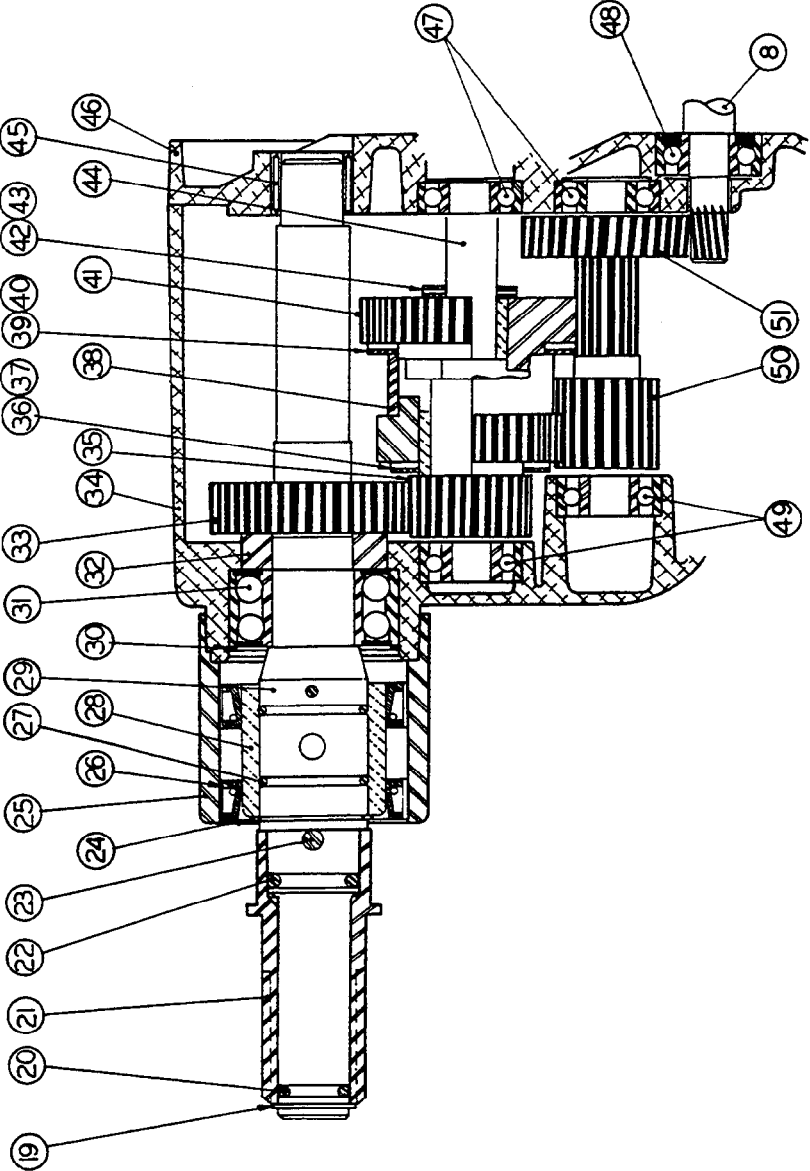
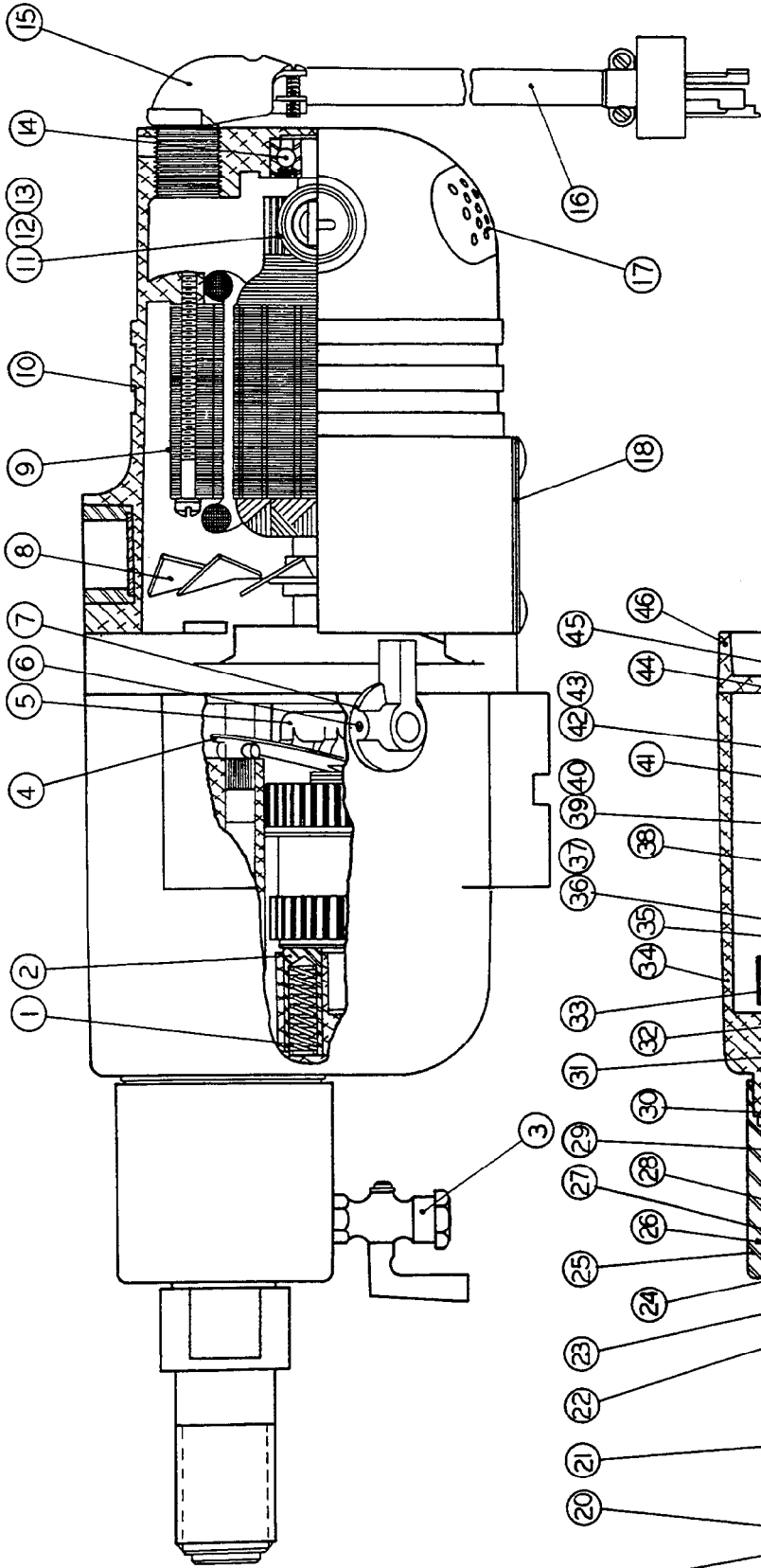
### ILLUSTRATED PARTS

FIG.	PART NO.	DESCRIPTION OF PART	NO. REQ.	FIG.	PART NO.	DESCRIPTION OF PART	NO. REQ.
1	40-50-6300	Shifting Spring	(2)	27	34-40-1350	"O" Ring	(2)
2	44-70-0100	Shifting Plunger	(2)	28	42-40-0391	Spindle Bushing	(1)
3	45-80-0060	Valve	(1)	29	38-50-4551	Spindle	(1)
4	45-98-0090	Shifting Yoke	(1)	30	34-80-3800	Retaining Ring	(1)
5	30-15-0051	Shifting Cam	(1)	31	02-20-2530	Ball Bearing	(1)
6	06-65-0840	Groove Pin	(1)	32	45-36-0380	Spindle Spacer	(1)
7	28-60-0051	Shifting Knob	(1)	33	32-75-2481	Spindle Gear	(1)
8	16-82-1770	Armature Assy.	(1)	34	28-14-1281	Gear Case	(1)
9	18-82-1070	Field Assy.	(1)	35	32-60-2011	Pinion Gear	(1)
10	28-50-4121	Motor Housing	(1)	36	02-80-1800	Thrust Bearing	(1)
11	22-22-0015	Brush Holder Assy.	(2)	37	45-88-0520	Thrust Washer	(1)
12	22-18-0055	Carbon Brush Assy.	(2)	38	32-10-0061	Clutch Gear Assy.	(1)
13	23-44-0030	Brush Retaining Screw	(2)	39	02-80-5000	Thrust Bearing	(1)
14	02-04-1070	Ball Bearing	(1)	40	45-88-0530	Thrust Washer	(1)
15	22-56-0060	Right Angle Connector	(1)	41	32-10-0051	Clutch Gear Assy.	(1)
16	22-64-0065	Cord Set	(1)	42	02-80-1200	Thrust Bearing	(1)
17	44-66-0180	Air Intake Cover Plate	(1)	43	45-88-0510	Thrust Washer	(2)
18	44-66-0050	Body Cover Plate	(1)	44	36-14-0061	Clutch Shaft	(1)
19	34-60-1800	Retaining Ring	(2)	45	02-50-4830	Needle Bearing	(1)
20	34-40-1100	"O" Ring	(1)	46	28-28-1361	Diaphragm	(1)
21	45-22-0050	Spindle Sleeve	(1)	47	02-04-1205	Ball Bearing	(2)
22	34-40-1200	"O" Ring	(1)	48	02-04-1260	Ball Bearing	(1)
23	44-60-0050	Shear Pin	(1)	49	02-04-1260	Ball Bearing	(2)
24	34-60-2115	Retaining Ring	(1)	50	36-66-3751	Intermediate Pinion Shaft	(1)
25	43-76-0051	Water Swivel Housing	(1)	51	32-40-1581	Intermediate Gear	(1)
26	45-06-0050	Water Seal	(2)				

### MISCELLANEOUS PARTS NOT SHOWN

PART NO.	DESCRIPTION OF PART	NO. REQ.	PART NO.	DESCRIPTION OF PART	NO. REQ.
49-18-0050	Water Hose	(1)	06-97-3800	Kantlink Lockwasher	(4)
06-81-8650	6-32x1/4 Rd. Hd. Air Intake Plate Sem	(2)	06-81-1150	10-24x3-1/8 Fil. Hd. Field Screw	(2)
06-81-5000	1/4-20x3/8 Truss Hd. Cover Plate Screws	(4)	06-42-1600	Woodruff Key	(1)
06-81-2125	1/4-20x3-1/2 Fil. Hd. Gear Case Screws	(4)	06-42-2000	Woodruff Key	(1)
06-81-8625	6-32x1/4 Ground Screw	(1)	06-42-2400	Woodruff Key	(1)
06-81-8400	4-40x1/4 Rd. Hd. Nameplate Sems	(2)	12-98-2100	Instruction Plate	(1)
06-81-8400	4-40x1/4 Rd. Hd. Instruction Plate Sems	(2)	12-99-0040	Nameplate	(1)
06-83-2650	1/4-20x3/8 Hd'less Brush Holder Set Screw	(2)	06-83-2650	1/4-20x3/8 Hd'less Cord Elbow Set Screw	(1)
06-97-2200	Kantlink Lockwasher	(2)	49-96-4700	Open End Wrench	(1)
45-88-5520	Flat Washer	(1)	06-65-1530	1/8x1/2 Roll Pin	(1)
45-88-5540	Flat Washer	(1)	45-88-5560	Flat Washer	(1)

Speed changes on the MILWAUKEE Two Speed Dymodril are accomplished simply and easily by means of a conveniently located shift lever. Gears are constantly in mesh and the position of a positive jawed clutch determines the speed range. It is suggested that speed changes be made while the tool is coasting to a stop after turning off the switch. This procedure minimizes the shock accompanying the instantaneous speed change.



PARTS LIST ON REVERSE SIDE