

PARTS LEGEND

5250/65C, 402090
5300/75C, 402030
5300/75CF, 500573
5350/90C, 402040

▲	1	091873	4	Socket Head Capscrew 1/4" - 20 x 2"	53	091622	1	Reducing Pipe Bushing	
▲	1A	404367	4	Socket Head Capscrew 1/4" - 20 x 3 1/4"	54	009016	4	Socket Head Capscrew, 5/16 - 18 x 1"	
	2	402447	4	Spacer, Diffuser	55	095412	1	Flat Washer, 5/16"	
	3	402448	1	Air Diffuser	56	402093	1	Spacer, Magazine Kit Bracket	
	4	500453	1	Bumper, Post	57	034976	1	Flexloc Nut, 5/16 - 18	
	5	404325	1	Stop Nut	58	015298	2	Socket Head Capscrew, #8 - 32 x 5/8"	
	7	002187	6	Lock Washer, 1/4"	59	402659	2	Steel Grommet	
	8	091447	6	Flat Washer, 1/4"	60	005562	1	Flat Socket Head Capscrew, 1/4 - 20x1"	
	9A	500462	1	Cap (5350/90C)	61	091733	3	Flexloc Nut, 1/4 - 20	
	9	500452	1	Cap (All Other Models)	62	404313	1	Insert, Feeder Body (5250/65C)	
*	*10	401983	1	Gasket	63	008388	4	Flat Washer, #10	
	11	500407	1	Spring	64	004238	4	Lock Washer, #10	
	12	406041	1	Retaining Ring	65	402666	1	Bushing	
*	*13	500461	1	"O" Ring, Inner Cap	66	009037	2	Socket Head Capscrew, #10 - 32 x 1/2"	
	14	500455	1	Upper Valve Piston	67	402662	1	Debris Shield (5350/90C)	
	15	401946	1	Seal, Main Valve		402661	1	Debris Shield (All Other Models)	
*	*16	092042	1	"O" Ring, Outer Cap	*68	402008	1	Gasket, Nose	
*	*17	091208	1	"O" Ring, Lower Valve Piston	69	402059	1	Flange, Nose	
*	*18	401950	1	"O" Ring, Lower Valve Piston	70	006787	2	Roll Pin 3/16" Dia. x 1" Lg.	
	19	500456	1	Lower Valve Piston	70A	401697	2	Roll Pin	
	20	500454	1	Post	71	402296	1	Spring, Work Contacting Element	
*	*21	095432	1	"O" Ring, Post	73	402062	1	Work Contacting Element (5350/90C)	
	22	402906	1	Button Head Screw 10-32 x 5/8"	☞	404053	1	Work Contacting Element (5300/75CF)	
	23	091861	1	Nut		402044	1	Work Contacting Element (All Other Models)	
	24	092116	2	Washer	74	095417	4	Lock Washer, 5/16"	
*	*25	092971	1	"O" Ring, Piston	75	402046	1	Nose (5350/90C)	
	26	401956	1	Piston (5350/90C)		402043	1	Nose (All Other Models)	
		402985	1	Piston (All Other Models)	76	402017	1	Pin, Door Hinge	
▲	*27	402023	1	Driver Blade (5350/90C)	77	402487	1	Holdback Pivot Pin	
		402021	1	Driver Blade (All Other Models)	78	402486	2	Retaining Washer	
	28	402011	1	Seal, Sleeve	79	402026	1	Holdback Spring	
	29	401901	1	Sleeve (5350/90C)	80	402037	1	Holdback Claw	
		401900	1	Sleeve (All Other Models)	81	402053	1	Door	
*	*30	092762	1	"O" Ring, Sleeve	82	402461	1	Locator	
*	*31	500367	1	"O" Ring, Sleeve (5350/90C)	83	402055	1	Feeder Body	
		091024	1	"O" Ring, Sleeve (All Other Models)	84	263239	1	Retaining Ring	
	32	401984	1	Flange	85	402018	1	End Cap	
*	*33	401985	1	"O" Ring, Flange	86	402084	1	Bumper, Feed Claw Piston	
	34	402993	1	Shim, Flange	87	402024	1	Spring	
*	*35	401986	1	Bumper	*88	091541	1	"O" Ring, Feed Claw Piston	
	36	401936	1	Housing	*88A	091541	1	"O" Ring, Cylinder End Seal	
	37	404937	2	Logo, Housing	89	402038	1	Piston, Feed Claw	
	38	097748	1	Spring, Valve Pin	*90	402031	1	"O" Ring, Cylinder End Seal	
	39	097746	1	Pin, Valve	91	402039	1	Cylinder End Seal	
*	*40	092174	1	"O" Ring, Valve Body	92	402027	1	Air Feed Tube	
	41	401958	1	Body, Valve	93	402488	1	Pivot Pin, Feed Claw	
	42	026133	3	Roll Pin, 1/8" Dia. x 1" Lg.	**94	500457	1	Warning Label	
	43	401992	1	Spring, Intermediate Work Contacting Element	*95	402041	1	Torsion Spring, Feed Claw	
	44	401991	1	Intermediate Work Contacting Element	96	404314	1	Feed Claw (5250/65C)	
	45	096893	1	Nameplate		402016	1	Feed Claw (All Other Models)	
	46	402079	1	Pin, Trigger	97	091363	2	Flexloc Thin Nut, #8 - 32	
	47	402668	1	Retaining Washer	98	402082	1	Nut Plate	
	48	005849	1	Roll Pin	99	402083	1	Latch Plate	
	49	405144	1	Trigger	100	402081	1	Reinforcement Plate	
	50	405147	1	Lever, Trigger	▲	101	091613	2	Socket Head Capscrew, #8 - 32 x 3/8"
	51	500488	1	Grip, Handle		102	091866	2	Roll Pin, 1/18" Dia. x 3/4" Lg.
▲	52	401940	1	End Plug		103	403296	1	Cap, Post

* Denotes normal wear items.

** NOTE: Make sure Warning Label (500457) is properly affixed. Replace if necessary. Label available at no charge through Service Department.

▲ Apply Loctite 242 (Blue) Part No. 093500

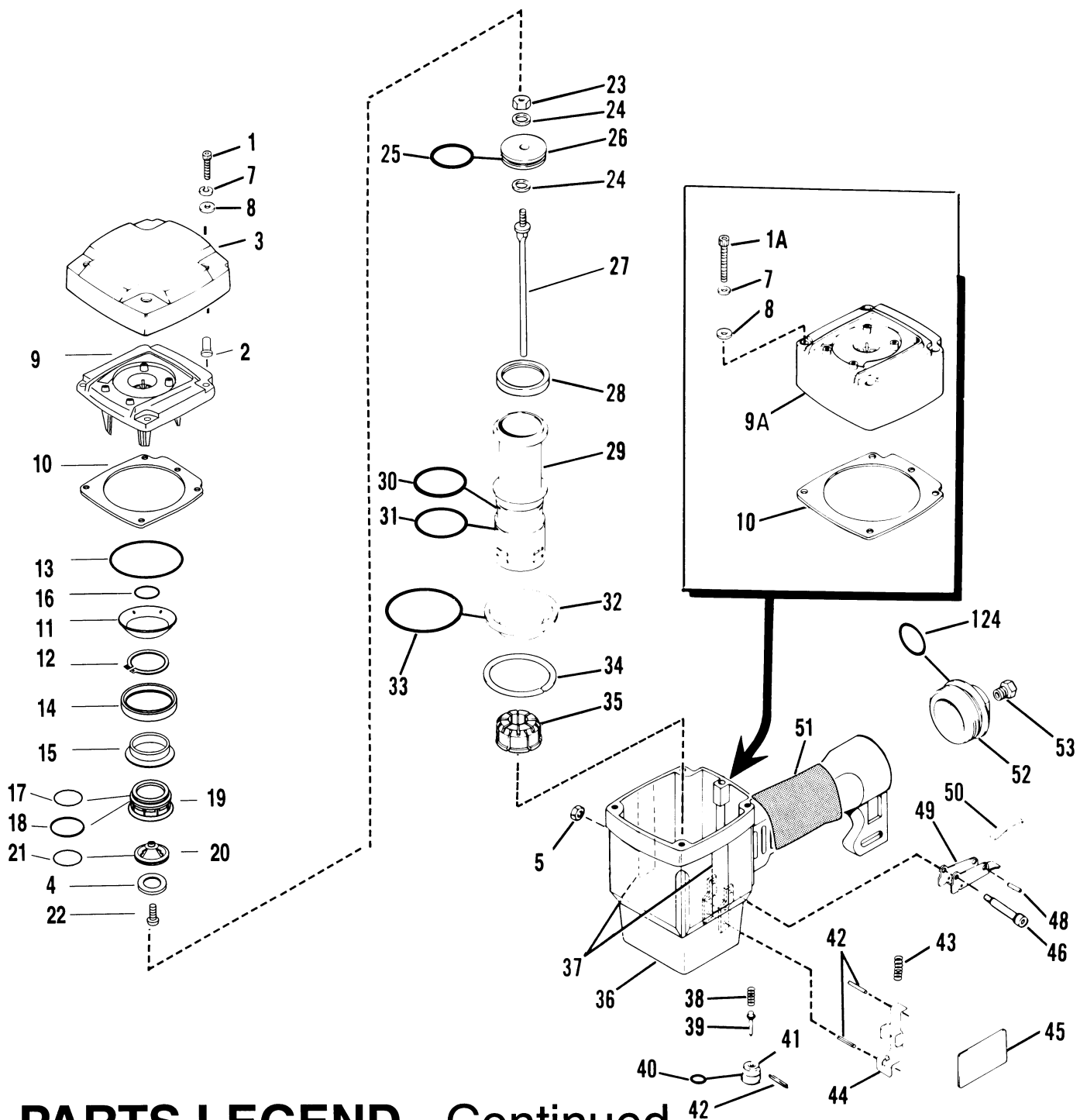
→ Denotes new change.

☞ Unique part to designated tool model.



WARNING

All parts must be periodically inspected and replaced if worn or broken. Failure to do this can affect the tool's operation and present a safety hazard.



PARTS LEGEND - Continued

104	402071	1	Extension Spring, Post	▲ 115	900295	2	Socket Head Capscrew, #10 - 32 x 3/8"
105	406047	1	Outer Center Post	116	402905	1	Label (5250/65C)
106	404046	1	Inner Center Post		402904	1	Label (5300/75C,5300/75CF)
108	091860	1	Flexlock Nut, 1/4 - 20		402903	1	Label (5350/90C)
109	402063	1	Magazine (5250/65C)	▲ 117	092735	2	Socket Head Capscrew, 1/4 - 20 x 1 1/4"
	402064	1	Magazine (5300/75C,5300/75CF)	118	402074	1	Nail Plate Assembly
	402065	1	Magazine (5350/90C)	119	402075	1	Retaining Ring, Post
110	009041	1	Socket Head Capscrew, 1/4 - 20 x 3/4"	124	091591	1	"O" Ring, End Plug
111	013631	1	Socket Head Capscrew, 5/16" - 18 x 1 1/4"	125	402066	1	Cover, Magazine
113	402088	1	Bracket, Magazine Kit	126	402655	1	Logo, Magazine
114	402089	2	Tee Nut				

PARTS OFFERED AS ASSEMBLIES

402035 Piston Assembly 402036 Piston Assembly (5350/90C)

Includes

23	091861	1	Nut
24	092116	1	Washer
25	092971	1	"O" Ring, Piston
26	402985	1	Piston
	401956	1	Piston (5350/90C)
27	402021	1	Driver Blade
	402023	1	Driver Blade (5350/90C)

402408 Trigger Assembly (All Models)

Includes

48	005849	1	Roll Pin
49	405144	1	Trigger
50	405147	1	Lever, Trigger

500595 Standard Tray Assembly (All Models)

Includes

61	091733	1	Flexloc Nut, 1/4 - 20
102	091866	2	Roll Pin, 1/18" Dia. x 3/4" Lg.
103	403296	1	Cap, Post
104	402071	1	Extension Spring, Post
105	406047	1	Outer Center Post
106	406046	1	Inner Center Post
118	402074	1	Nail Plate Assembly
119	402075	1	Retaining Ring

500463 Main Valve Assembly (All Models)

Includes

12	406041	1	Retaining Ring
14	500455	1	Upper Valve Piston
15	401946	1	Seal, Main Valve
17	091208	1	"O" Ring, Lower Valve Piston
18	401950	1	"O" Ring, Lower Valve Piston
19	500456	1	Lower Valve Piston

500596 Post Assembly (All Models)

Includes

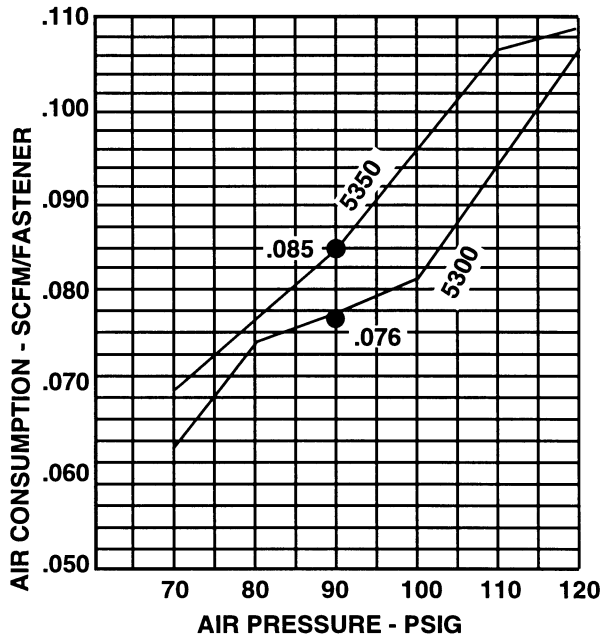
61	091733	1	Flexloc Nut, 1/4 - 20
102	091866	2	Roll Pin, 1/18" Dia. x 3/4" Lg.
103	403296	1	Cap, Post
104	402071	1	Extension Spring, Post
105	406047	1	Outer Center Post
106	406046	1	Inner Center Post

500466 Cap Assembly 500467 Cap Assembly (5350/90C)

Includes

4	500453	1	Bumper, Post
9	500452	1	Cap
9A	500462	1	Cap (5350/90C)
11	500407	1	Spring
12	406041	1	Retaining Ring
13	500461	1	"O" Ring, Outer Cap
14	500455	1	Upper Valve Piston
15	401946	1	Seal, Main Valve
16	092042	1	"O" Ring, Inner Cap
17	091208	1	"O" Ring, Lower Valve Piston
18	401950	1	"O" Ring, Lower Valve Piston
19	500456	1	Lower Valve Piston
20	500454	1	Post
21	095432	2	"O" Ring, Post
22	402906	1	Button Head Screw, #10 - 32 x 5/8"

AIR CONSUMPTION CHART



SAFETY INSTRUCTIONS

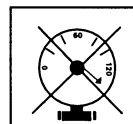
WEAR EYE AND HEARING PROTECTION



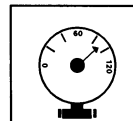
Always wear hearing protection and eye protection devices, including side shields when operating or working in the vicinity of a tool.



DO NOT EXCEED MAXIMUM RECOMMENDED AIR PRESSURE



Operate the tool using only the recommended air pressure. Do not exceed the maximum air pressure marked on the tool. Be sure the air pressure gauge is operating properly and check it at least twice a day.



Never use any bottled air or gases such as oxygen to operate the tool since they could cause the tool to explode.