

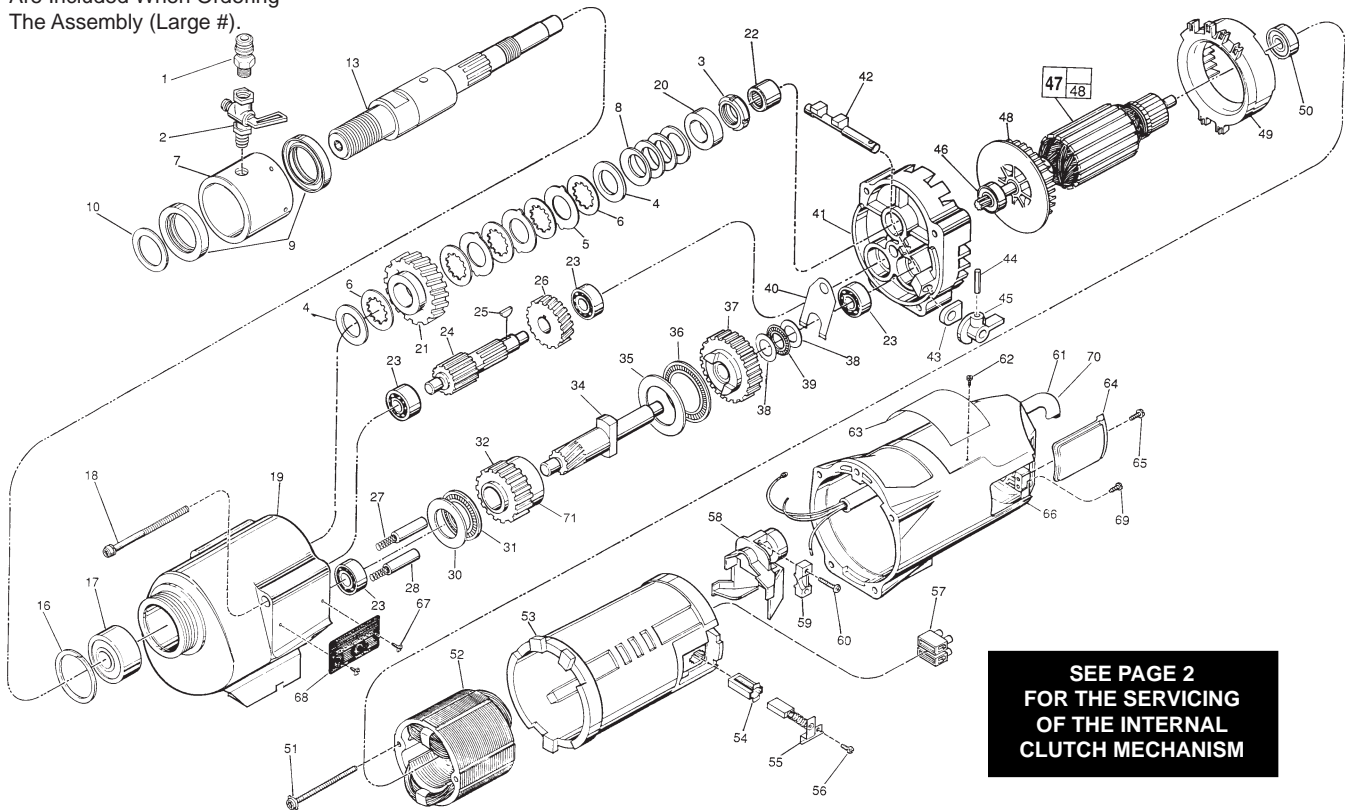


SERVICE PARTS LIST

BULLETIN NO.
55-16-0130

SPECIFY CATALOG NO. AND SERIAL NO. WHEN ORDERING PARTS		REVISED BULLETIN	DATE
DYMODRILL with INTERNAL CLUTCH			Jan. 2012
CATALOG NO. 4004-59A	STARTING SERIAL NO. D89A	WIRING INSTRUCTION See Pages 3 and 4	

EXAMPLE:
Component Parts (Small #)
Are Included When Ordering
The Assembly (Large #).



**SEE PAGE 2
FOR THE SERVICING
OF THE INTERNAL
CLUTCH MECHANISM**

FIG.	PART NO.	DESCRIPTION OF PART	NO. REQ.
1	42-90-0210	Water Hose Fitting	(1)
2	45-80-0060	Shut Off Valve	(1)
3	06-57-1050	Retaining Nut	(1)
4	45-88-1140	Thrust Washer	(2)
5	43-06-0160	Clutch Disc-Outer	(3)
6	43-06-0150	Clutch Disc-Inner	(5)
7	43-76-0051	Water Swivel Hsg Incl 06-83-2430 Scr	(1)
8	40-50-2150	Disc Spring	(2)
9	45-06-0635	Seal	(4)
10	45-88-8565	Washer (Bag of 2)	(1)
13	38-50-6020	Spindle	(1)
16	34-80-3800	Retaining Ring	(1)
17	02-20-2515	Ball Bearing	(1)
18	06-82-9202	1/4-20 x 4-1/4" Taptite T-30	(4)
19	28-14-1870	Gear Case Assy.(Inc. 06-65-1535 Pin)	(1)
20	45-36-1520	Spindle Spacer	(1)
21	32-75-3430	Spindle Gear	(1)
22	02-50-4830	Needle Bearing	(1)
23	02-04-1205	Ball Bearing	(4)
24	36-66-3751	Pinion Shaft Assy.	(1)
25	06-42-1600	Woodruff Key	(1)
26	32-40-1581	Intermediate Gear	(1)
27	40-50-6300	Shifting Spring	(2)
28	44-70-0100	Shifting Plunger	(2)
30	45-88-0520	Thrust Bearing Washer	(1)
31	02-80-1800	Thrust Bearing	(1)
32	32-10-0060	Clutch Gear Assembly	(1)
34	36-14-0720	Clutch Pinion Shaft	(1)
35	45-88-0530	Thrust Bearing Washer	(1)
36	02-80-5000	Thrust Bearing	(1)
37	32-10-0051	Clutch Gear Assembly	(1)
38	45-88-0510	Thrust Bearing Washer	(2)
39	02-80-1200	Thrust Bearing	(1)
40	45-98-0090	Shifting Yoke	(1)
41	14-13-0210	Diaphragm Assy.(Inc. 06-65-1155 Pin)	(1)
42	30-15-0272	Shift Cam	(1)
43	43-44-0580	Foam Gasket	(2)
44	06-65-0840	1/8 x 3/4" Groove Pin	(1)
45	25-60-0056	Shifting Knob	(1)
46	02-04-1229	Ball Bearing	(1)
47	16-76-0325	230 V Armature	(1)
48	22-84-0790	Fan	(1)

FIG.	PART NO.	DESCRIPTION OF PART	NO. REQ.
49	42-14-0291	Baffle	(1)
50	02-04-1041	Ball Bearing	(1)
51	06-82-9152	10-24 x 2-3/4" Pan Hd. Sem. T-25	(2)
52	18-74-0120	220 V. Field	(1)
53	23-16-1410	Motor Insulator	(1)
54	22-20-0680	Brush Tube	(2)
55	22-18-0706	Carbon Brush Assembly	(2)
56	06-82-8835	8-32 x 5/16" Pan Hd. Sem.T-20	(2)
57	22-56-0470	Terminal Block	(1)
58	22-38-0140	Wire Trap	(1)
59	31-17-0200	Cord Clamp	(1)
60	06-82-7326	8-16 x 1" Pan Hd. Plastite T-20	(2)
61	23-37-4096	Control Assy. (See Page 4)	(1)
62	06-72-1720	Service Rivet	(2)
63	-----	Service Nameplate	(1)
64	22-32-0350	Brush Cover	(2)
65	06-82-5316	8-32 x 1/2" Pan Hd. Slit. Taptite T-20	(2)
66	28-50-6363	Motor Housing	(1)
67	06-82-5266	4-40 x 1/4" Pan Hd. TaptiteT-10	(2)
68	12-98-2100	Instruction Plate	(1)
69	06-95-5200	8-32 x 5/16" Slotted Hex Hd. Screw	(1)
70	22-36-0090	PRCD (See Page 4)	(1)
71	45-36-0225	Gear Spacer	(1)
	49-96-4705	1-3/8" Open End Wrench	(1)
	49-96-0050	3/32" Hex Socket Wrench	(1)
	49-96-0080	3/16" Hex Socket Wrench	(1)
	45-56-0210	Strap and Buckle	(1)
	61-10-0660	Retaining Nut Spanner Tool	(1)
	61-30-0061	Water Seal Jig	(1)

FOR MOUNTING DRILL MOTOR USE:
06-75-3100 1/4-20 x 1" Socket Hd. Screw (4)
06-97-4050 1/4" Split Ring Lock Washer (4)

FIG. LUBRICATION
19 18 Oz. Type "J" Grease, No. 49-08-4220.

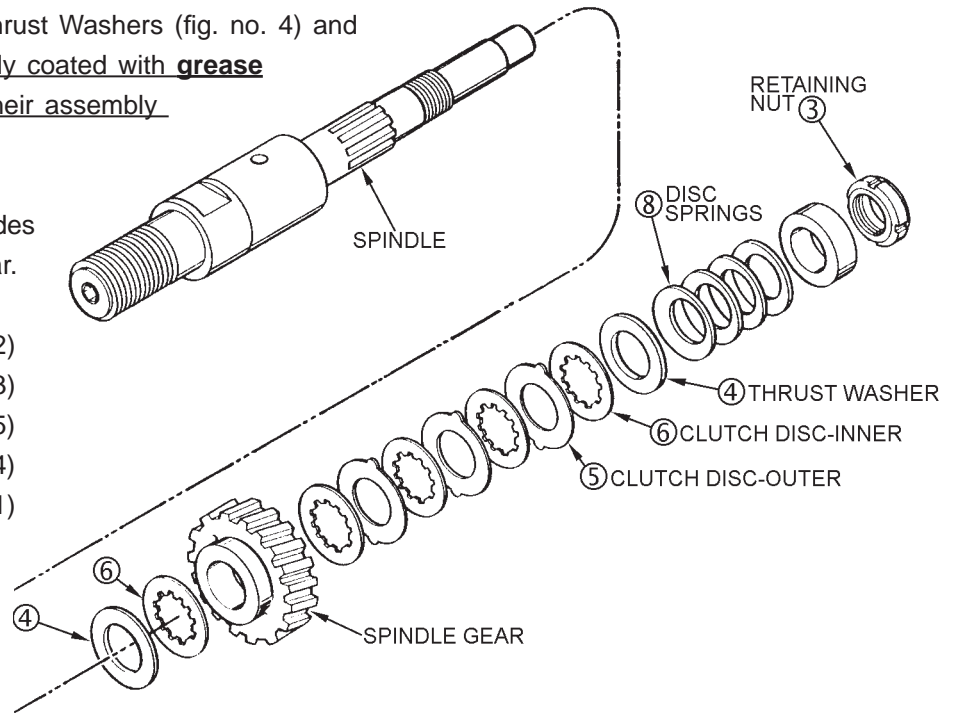
Servicing the Clutch Mechanism-

Torque Value for the Clutch Mechanism Retaining Nut (fig. no. 3).

Grease / Lubrication — when assembling the internal clutch component parts: the Clutch Discs (fig. nos. 5 and 6), Thrust Washers (fig. no. 4) and Disc Springs (fig. no. 8) are to be lightly coated with grease (Cat. No. 49-08-4220 type 'J') during their assembly into the spindle gear.

Grease / Lubrication specification includes coating internal bore of the spindle gear.

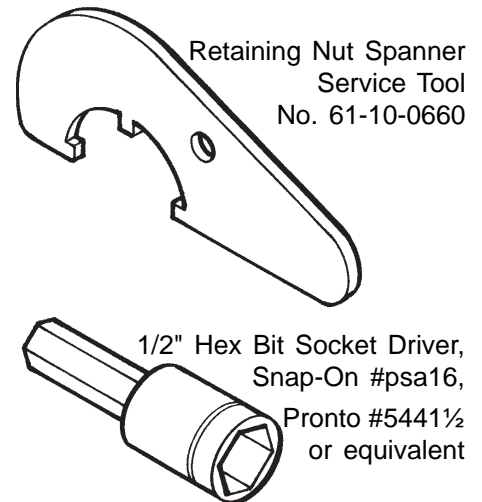
4	45-88-1140	Thrust Washers	(2)
5	43-06-0160	Clutch Discs-Outer	(3)
6	43-06-0150	Clutch Discs-Inner	(5)
8	40-50-2150	Spring Discs	(4)
	32-75-3430	Spindle Gear	(1)



Service note: the assembly torque for the Clutch Mechanism Retaining Nut, No. 06-57-1050 (fig. no. 3), which insures the static torque required to slip the clutch mechanism, as lubricated, should be **45-50 ft-lbs (61-68 Nm)**.

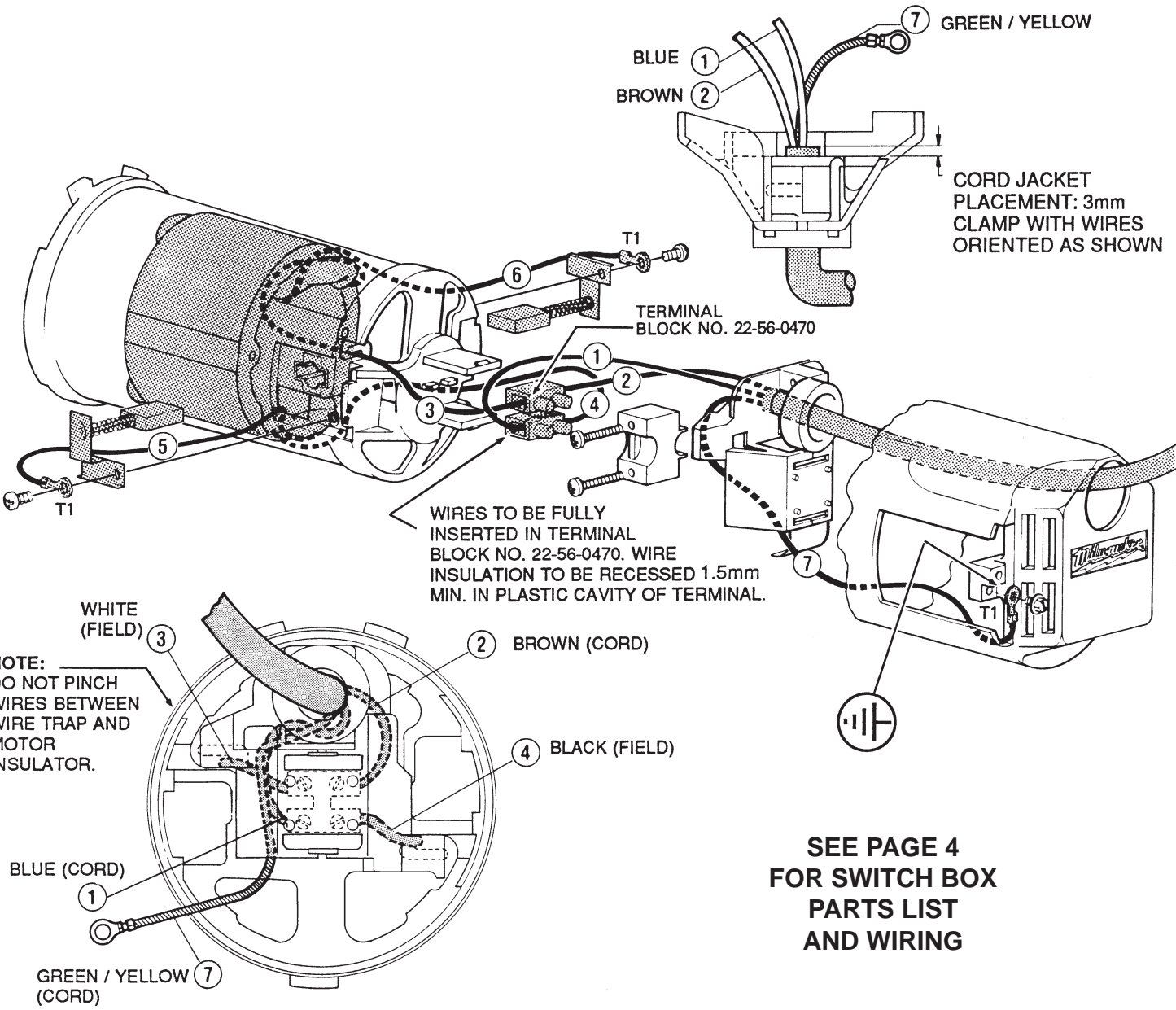
With the gear case separated from the diaphragm & motor housing of the Clutch Dymo-Drill motor —

- insert & engage a **61-10-0660** retaining nut spanner with the notches in the **06-57-1050** clutch adjustment retaining nut.
- with a **1/2" hex socket bit driver** attached to a torque wrench, interlock the male hex with the female hex found in the threaded end of the dymo-drill spindle.
- turn the torque wrench clockwise ↻, observing the torque reading and tighten the clutch adjustment retaining nut on the rear of the spindle shaft until a value of **45-50 ft-lbs (61-68 Nm)** is obtained.



WIRING INSTRUCTIONS

TITLE	DYMODRILL and SWITCH BOX	BULLETIN
MILWAUKEE ELECTRIC TOOL CORP. 13135 WEST LISBON RD. BROOKFIELD, WIS.	DATE	

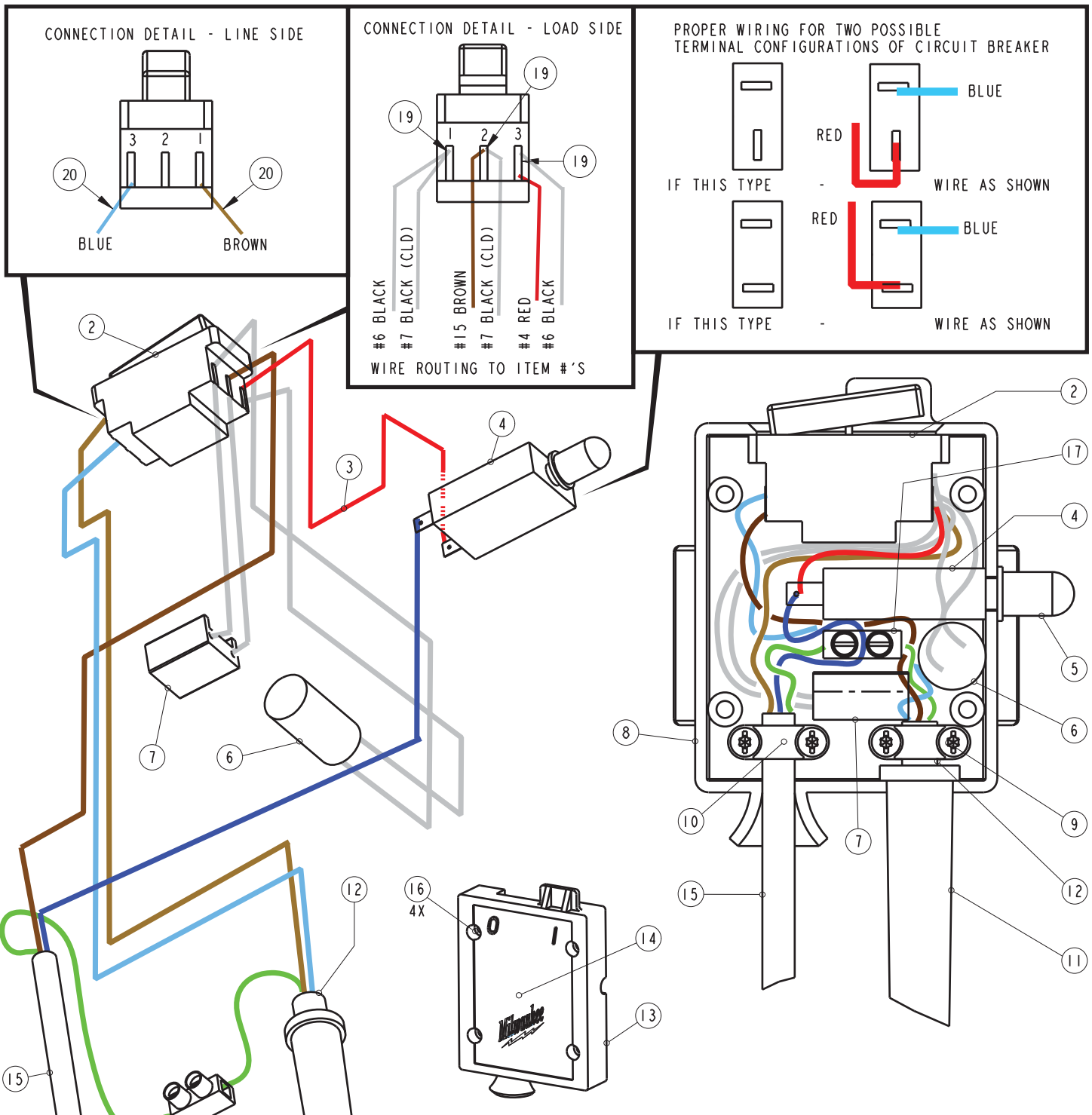


WIRING SPECIFICATIONS

Wire No.	Wire Color	Origin or Gauge	Length	Terminals, Connectors and 1 or 2 End Wire Preparation
1	Blue	Cord	70mm	As received, apply with #8.
2	Brown	Cord	70mm	As received, apply with #9.
3	White	Field	-----	As received.
4	Black	Field	-----	As received.
5	White	Field	-----	Strip 5mm for T1.
6	White	Field	-----	Strip 5mm for T1.
7	Green/Yellow	Cord	-----	Strip 5mm for T1.

NOTE:
All leads must be held to $\pm 1/8"$.
All lead lengths are before strip-

TERMINAL DESCRIPTION		
Code	Part No.	Qty.
T1	23-74-0840	3
CONNECTOR DESCRIPTION		



SERVICE NOTES:

- Screws can use either a flat blade or T-20 screwdriver.
- Cover (13) should mate flush with enclosure (8) before securing with cover screws (16). A gap indicates a misplaced wire or component.
- Tighten breaker boot (5) after installing cover (13).
- Cord jackets (12 and 15) are to extend a minimum of .125" beyond cord clamps (10), 2 places. Cord set (12) is shown inside cord protector (11).
- Ground label (18) is to be applied to the inside of the enclosure (8), under the terminal block (17).
- Tuck the red leadwire assembly (3) down below pegs.

ITEM	PART NUMBER	DESCRIPTION	QTY.
1	22-68-0200	SWITCH BOOT (Not Shown)	(1)
2	23-66-1430	SWITCH - DELAY TYPE	(1)
3	23-94-9915	LEADWIRE ASSEMBLY - RED	(1)
4	22-36-0150	BREAKER	(1)
5	22-68-0210	BREAKER BOOT	(1)
6	22-33-0430	SUPPRESSOR	(1)
7	22-74-0053	CURRENT LIMIT DEVICE	(1)
8	22-12-0200	ENCLOSURE	(1)
9	06-82-7299	SCREW	(4)
10	31-17-0155	CLAMP	(2)
11	44-76-0140	CORD PROTECTOR	(1)
12	22-64-0201	CORD SET ASSEMBLY	(1)
13	22-68-0190	COVER	(1)
14	12-98-3080	INSTRUCTION PLATE	(1)
15	22-64-5050	CORD SET	(1)
16	06-82-7326	SCREW	(4)
17	22-56-0480	TERMINAL BLOCK	(1)
18	10-98-3030	GROUND LABEL (Not Shown)	(1)
19	23-74-2005	1.5MM FERRULE (Not Shown)	(3)
20	23-74-2000	1.0MM FERRULE (Not Shown)	(2)