

Table Mitre Saw - F 012 331 600 - 3316



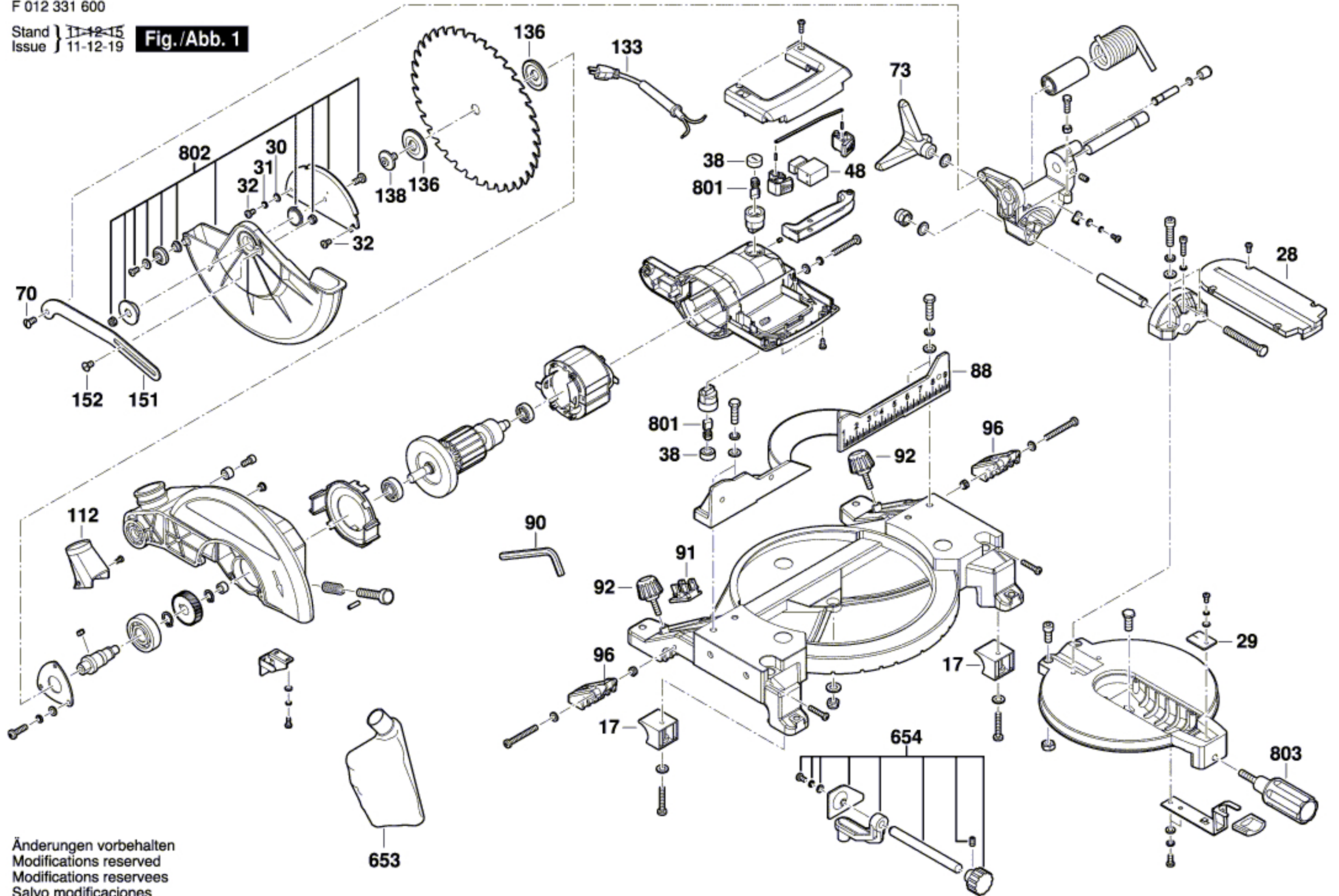
Item	Part Number	Description	Illustration	Price	Quantity	Price Group
17	2 610 018 630	Clamp		1 \$ 1.60	2	13
28	2 610 018 642	Plate		1 \$ 3.55	1	17
29	2 610 018 643	Pointer		1 \$ 0.65	1	10
30	2 610 018 644	Plain Washer		1 \$ 0.65	2	10
31	2 610 018 645	Spring Washer		1 \$ 0.65	6	10
32	2 610 018 646	Screw		1 \$ 0.65	3	10
38	2 610 018 652	Protective Cap		1 \$ 0.65	2	10
48	2 610 018 662	Switch		1 \$ 9.35	1	24
70	2 610 018 683	Screw		1 \$ 0.65	1	10
73	2 610 018 686	Knob		1 \$ 2.42	1	15
88	2 610 018 693	Mitre Fence		1 \$ 14.15	1	28
90	2 610 018 695	Disassembly Tool		1 \$ 1.07	1	11
91	2 610 018 696	Holder		1 \$ 0.65	1	10
92	2 610 018 697	Knob		1 \$ 2.77	2	16
96	2 610 018 699	Clamp		1 \$ 2.77	2	16
112	2 610 018 714	Dust Separator		1 \$ 1.90	1	14
133	2 610 018 730	Cord		1 \$ 14.15	1	28
136	2 610 018 733	Special Washer		1 \$ 4.70	1	19
138	2 610 018 734	Locking Bolt		1 \$ 1.90	1	14
151	2 610 018 743	Rod		1 \$ 2.77	1	16
152	2 610 007 827	Screw		1 \$ 0.65	1	10
653	2 610 017 172	Dust Bag		1 \$ 3.55	1	17
654	2 610 017 173	Clamp		1 \$ 10.60	1	25
801	2 610 018 664	Brush		1 \$ 6.25	1	21
802	2 610 018 720	Lower guard		1 \$ 18.70	1	31
803	2 610 018 731	Handle		1 \$ 4.10	1	18

Information subject to change without further notice.

F 012 331 600

Stand } 11-12-15
Issue } 11-12-19

Fig./Abb. 1



Änderungen vorbehalten
Modifications reserved
Modificaciones reservées
Salvo modificaciones