



SERVICE PARTS LIST

BULLETIN NO.
54-49-2710

SPECIFY CATALOG NO. AND SERIAL NO. WHEN ORDERING PARTS		REVISED BULLETIN	DATE
M18™ FUEL™ STRING TRIMMER			Aug. 2020
CATALOG NO. 2725-20	STARTING SERIAL NO. H35A and B	WIRING INSTRUCTION See Page 3	

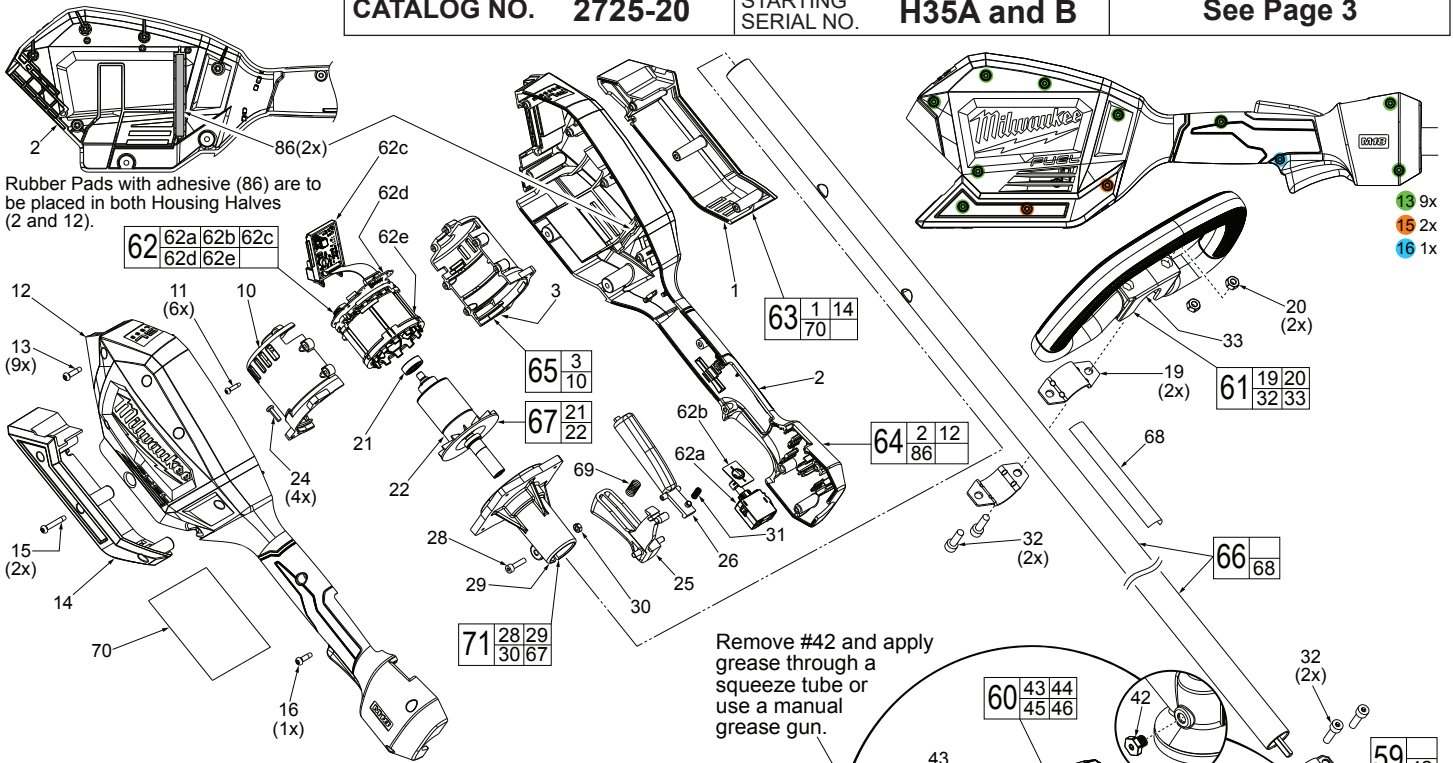
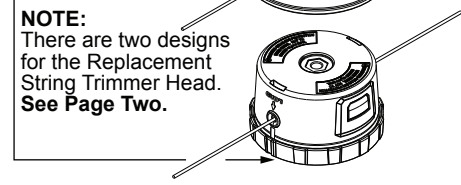
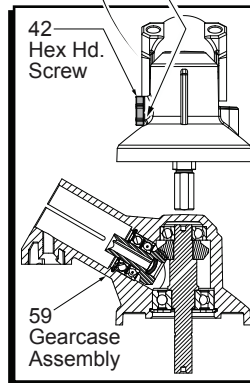


FIG.	PART NO.	DESCRIPTION OF PART	NO. REQ.
1	-----	Lower Cover Halve-Left	1
2	-----	Housing Support-Left Housing Halve	1
3	-----	Motor Insulator-Left	1
10	-----	Motor Insulator-Right	1
11	06-82-1080	M3 x 14mm Pan Hd. ST T-10 Screw	6
12	-----	Housing Cover-Right Housing Halve	1
13	05-88-1200	M4 x 16mm Pan Hd. ST T-20 Screw	9
14	-----	Lower Cover Halve-Right	1
15	05-88-1300	M4 x 28mm Pan Hd. ST T-20 Screw	2
16	05-88-5375	M4 x 13.5 Pan Hd. ST T-20 Screw	1
19	42-68-0292	Carrier Handle Clip	2
20	05-55-0006	M6 Hex Nut	2
21	02-04-0034	Ball Bearing	1
22	-----	Rotor with Drive Shaft Coupling	1
24	06-82-7240	6-19 x 1/2" Pan Hd. ST T-15 Screw	4
25	45-72-0083	On-Off Trigger	1
26	45-72-0084	Release Trigger	1
28	05-74-0013	M4 x 20mm Hex Skt. Hd. Cap Screw (Silver)	1
29	44-34-0095	Motor Mount Assembly with Bearing	1
30	05-55-0004	M4 Hex Nut (Silver)	1
31	40-50-0373	Spring	1
32	05-74-0015	M6 x 21.5mm, 5mm Hex Socket Cap Screw	4
33	-----	Carrier Handle	1
41	05-81-0131	M6 x 18mm, 5mm Hex Flat Hd. Screw	1
42	05-85-0080	M8 x 1.25 Hex Hd. Screw	1
43	-----	String Guard	1
44	42-26-0024	Line Cut-Off Blade	1
45	05-74-0935	M5 x 15mm Pan Hd. T-25 Machine Screw	2
46	05-81-0132	M6 x 14mm Pan Hd. T-30 Machine Screw	4
52	44-66-0029	Lock Plate Assembly	1
59	14-30-0205	Gearcase Assembly	1
60	14-32-0140	String Guard Assembly	1
61	14-34-0124	Carrier Handle Assembly	1
62	14-20-0056	Electronics Assembly	1
62a	-----	On-Off Switch	1
62b	-----	Two Speed Selector/PCBA Assembly	1
62c	-----	Battery Connector/PCBA Assembly	1
62d	-----	Hall Board Assembly	1
62e	-----	Stator Assembly	1
63	31-44-0181	Lower Cover Kit	1

Remove #42 and apply grease through a squeeze tube or use a manual grease gun.



NOTE:
There are two designs for the Replacement String Trimmer Head. See Page Two.

It is recommended to lubricate Gearcase Assembly (59) at 50 hour intervals. Remove Hex Head Screw (42) and place 9.5-11.5g of Type 'Y' grease, 49-08-5270 inside Gearcase. **DO NOT OVERFILL.**

FIG.	PART NO.	DESCRIPTION OF PART	NO. REQ.
64	31-44-0182	Housing Kit	1
65	31-50-0881	Motor Insulator Kit	1
66	45-08-0174	Drive Shaft Assembly	1
67	16-01-0021	Rotor Assembly	1
68	10-20-1043	Warning Label	1
69	40-50-0374	Bias Spring	1
70	12-20-0088	Service Nameplate	1
71	14-50-2725	Rotor/Motor Mount Assembly	1
84	49-96-0012	5mm Hex Key (Not Shown)	1
85	49-96-0055	T-30 Key (Not Shown)	1
86	44-52-0001	Rubber Pad with Adhesive (Set of 2)	1

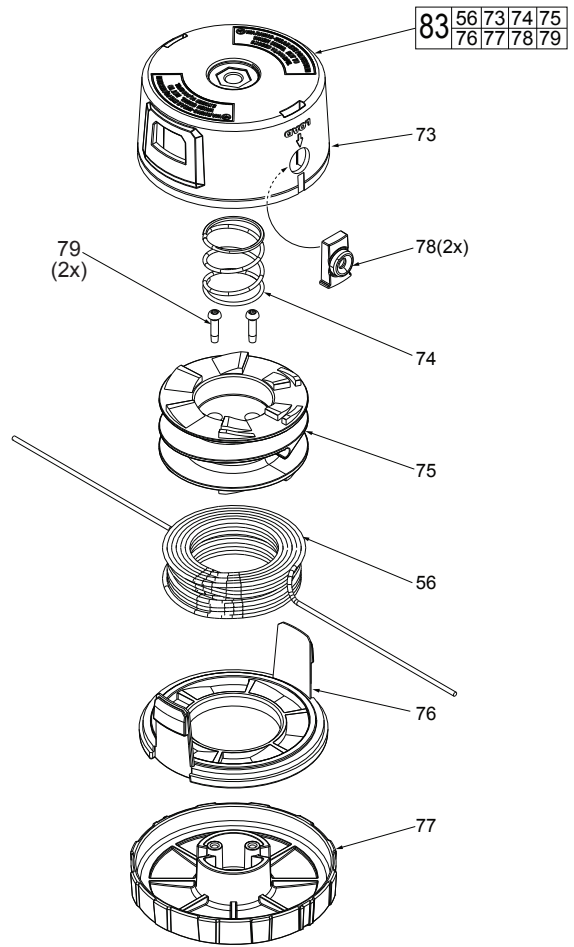
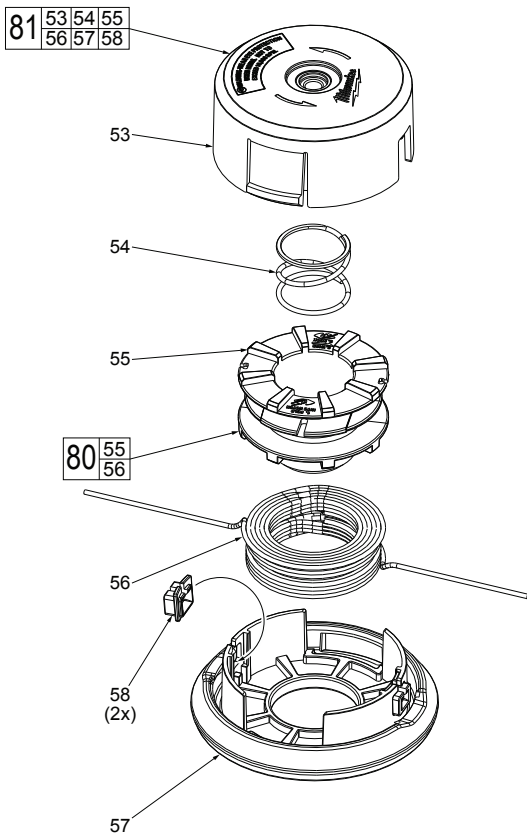


FIG.	PART NO.	DESCRIPTION OF PART	NO. REQ.
53	-----	Trimmer Head Body	1
54	-----	Trimmer Head Spring	1
55	-----	Spool and Bump Knob	1
56	-----	0.080" x 150' String	1
57	-----	Trimmer Head Cover	1
58	-----	Guideline Eyelets	2
80	49-16-2711	Loaded Replacement Spool	1
81	49-16-2710	Loaded Replacement Head	1

FIG.	PART NO.	DESCRIPTION OF PART	NO. REQ.
56	-----	0.080" x 150' String	1
73	-----	Trimmer Head Body	1
74	-----	Trimmer Head Spring	1
75	-----	Spool	1
76	-----	Trimmer Head Ring	1
77	-----	Trimmer Head Bump Cap	1
78	-----	Guideline Eyelets	2
79	05-88-1200	M4 x 16mm Pan Hd. ST T-20 Screw	2
83	49-16-2714	Loaded Replacement Head	1

To remove string trimmer head assembly follow these steps:

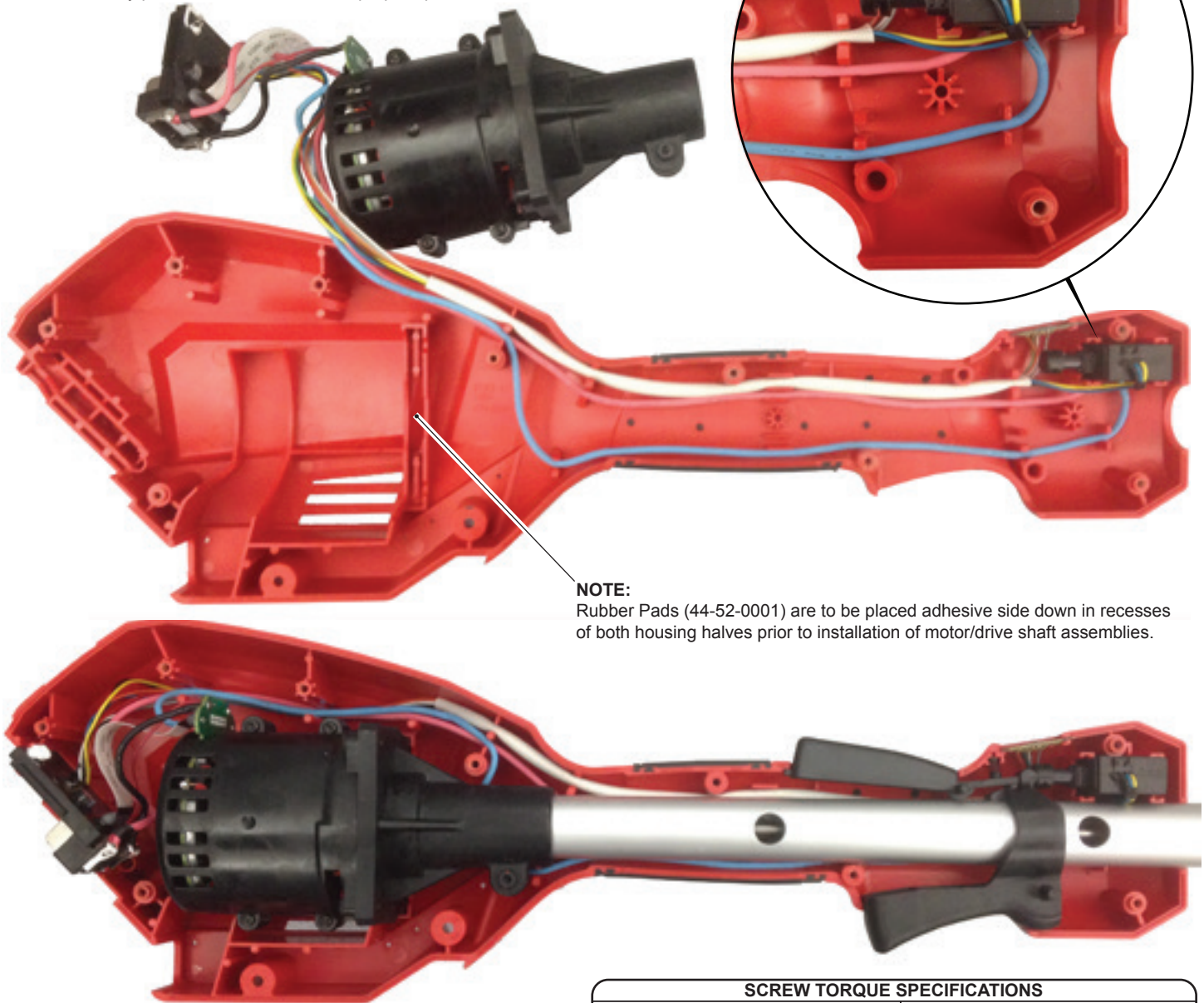
1. Use pin supplied with Easy Load Trimmer Head replacement (or a similar tool). Insert pin into gearcase hole as shown.
2. Slowly rotate head in either direction until pin drops into a gear detent, locking gear in place. Rotate in a counter-clockwise direction to break loose.
3. Continue to rotate head in a counter-clockwise direction to remove from spindle.

To install Easy Load Trimmer Head (49-16-2714) follow these steps:

1. Use pin supplied with Easy Load Trimmer Head replacement (or a similar tool). Insert pin into gearcase hole as shown. Slowly rotate spindle in either direction until pin drops into a gear detent, locking spindle in place.
2. Place trimmer head assembly onto spindle and begin threading in a clockwise direction.
3. Continue to rotate assembly in a clockwise direction and hand tighten until snug.

WIRING INSTRUCTION

- Place On-Off Switch (62a) and Two Speed Selector PCBA (62b) squarely and firmly in the cavities of the Support Housing (2).
- Route wires from those components through the wire traps in the Support Housing, removing as much slack in the wires along the way.
- The Rotor/Stator Assemblies (62d, 62e, 67) are captured in the Motor Insulator/Motor Mount Assemblies (65, 71). Place these components squarely and firmly in the cavities of the Support Housing.
- Route wires from those components through wire traps in the Support Housing, removing as much slack in the wires along the way.
- Place Battery Connector/PCBA squarely and firmly in the cavity of the Support Housing.
- Be sure to tuck all wires and sleeved wire assemblies to the bottom of all wire traps.
- Carefully insert Drive Shaft Assembly (66) into the Rotor/Motor Mount Assembly (71). Be sure to orient Drive Shaft so the two holes are perpendicular to the Support Housing. Tighten Hex Screw (28) with a 3mm hex wrench to secure Drive Shaft to Motor Mount.
- Reinstall On-Off Trigger (25), Release Trigger (26) and Release Trigger Spring (31).
- Carefully place Housing Cover (12) onto Housing Support being sure to check for any interference and secure with Screws (13).
- Attach the Lower Cover Halves (63) with Screws (15).
- Check for the proper functionality of the On-Off Trigger (25) and Release Trigger (26).
- Install a battery pack and check the tool for proper operation.



NOTE:

Rubber Pads (44-52-0001) are to be placed adhesive side down in recesses of both housing halves prior to installation of motor/drive shaft assemblies.

**ALWAYS REMOVE BATTERY PACK
BEFORE PERFORMING ANY
MAINTENANCE OR REPAIRS**

FIG.	PART NO.	WHERE USED	SCREW TORQUE SPECIFICATIONS	
			SEAT TORQUE	
			(KG/CM)	(IN/LBS)
11	06-82-1080	Motor Insulator	12.0-16.0	10.4-13.8
13	05-88-1200	Housing Cover	15.0-20.0	13.0-17.3
15	05-88-1300	Lower Cover	15.0-20.0	13.0-17.3
16	05-88-5375	Housing Cover	15.0-20.0	13.0-17.3
24	06-82-7240	Motor Insulator	12.0-16.0	10.4-13.8
28	05-74-0013	Motor Mount	11.0-14.0	9.5-12.1
32	05-74-0015	Carrier Handle	25.0-28.0	21.6-24.3
32	05-74-0015	Gearcase Assy.	25.0-28.0	21.6-24.3
41	05-81-0131	Gearcase Assy.	20.0-25.0	17.3-21.6
42	05-85-0080	Gearcase Assy.		
45	05-74-0935	Line Cut-Off Blade	15.0-20.0	13.0-17.3
46	05-81-0132	String Guard Assy.	28.0-32.0	24.3-27.7
53	-----	Trimmer Head	145-155	125.8-134.5