

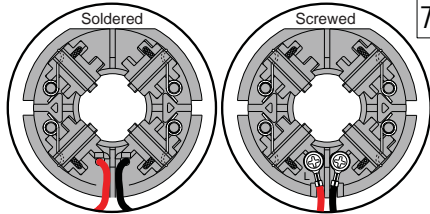


SERVICE PARTS LIST

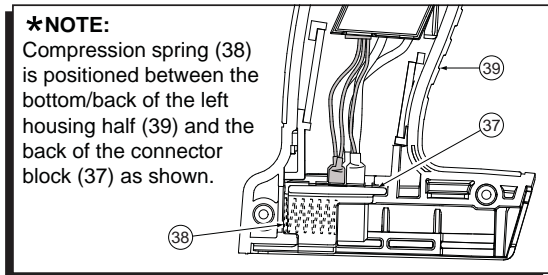
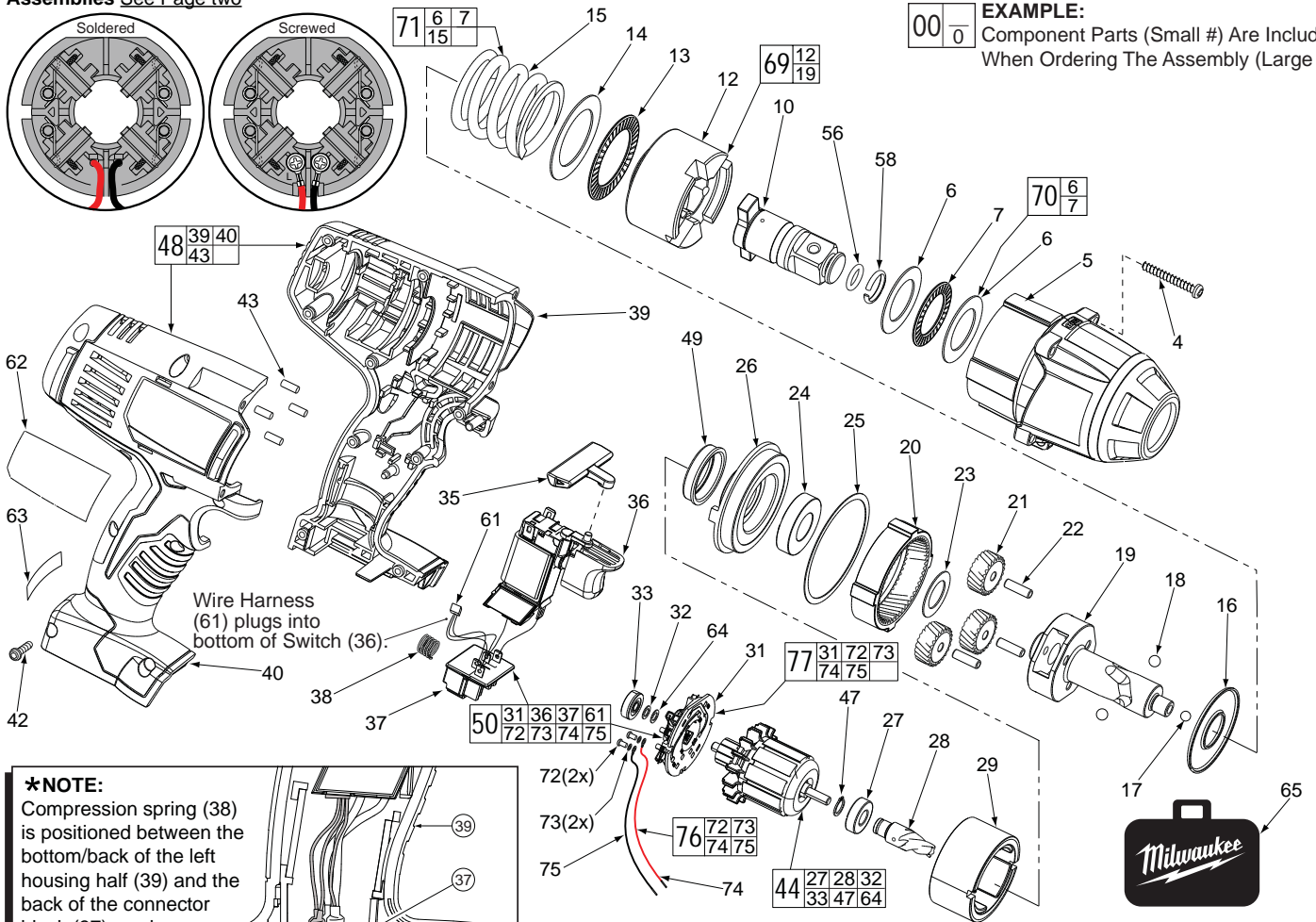
BULLETIN NO.
55-26-2680

| | | | |
|--|---------------------------------|---|-----------|
| SPECIFY CATALOG NO. AND SERIAL NO. WHEN ORDERING PARTS | | REVISED BULLETIN | DATE |
| CORDLESS 18V 3/4" SQUARE IMPACT WRENCH | | | Aug. 2014 |
| CATALOG NO. 2664-059 | STARTING SERIAL NO. D44A | WIRING INSTRUCTION See Page 3 | |

#77 Two styles of Brush Card Assemblies See Page two



EXAMPLE:
Component Parts (Small #) Are Included When Ordering The Assembly (Large #).



| FIG. | PART NO. | DESCRIPTION OF PART | NO.REQ. |
|------|------------|--|---------|
| 4 | 05-88-5988 | M5 X 35mm Pan Hd. Sit. T-20 Screw | (4) |
| 5 | 14-30-0965 | Front Housing Assy. w/ Bushing and O-Rings | (1) |
| 6 | ----- | Washer | (2) |
| 7 | ----- | Thrust Bearing | (1) |
| 10 | 42-06-0690 | 3/4" Anvil | (1) |
| 12 | ----- | Hammer | (1) |
| 13 | 02-80-0200 | Thrust Bearing | (1) |
| 14 | 45-88-1006 | Washer | (1) |
| 15 | ----- | Compression Spring | (1) |
| 16 | 45-88-1650 | Washer | (1) |
| 17 | 02-02-7010 | 7/32" Ball | (1) |
| 18 | 02-02-0250 | 1/4" Ball | (2) |
| 19 | ----- | Camshaft | (1) |
| 20 | 32-65-0260 | Ring Gear | (1) |
| 21 | 32-62-0500 | Planet Gear | (3) |
| 22 | 44-60-1960 | Pin | (3) |
| 23 | 45-88-1655 | Washer | (1) |
| 24 | 02-04-0375 | Ball Bearing | (1) |
| 25 | 34-40-0290 | Seal Ring | (1) |
| 26 | 44-66-0895 | Motor Mount Plate | (1) |
| 27 | ----- | Ball Bearing - Front | (1) |
| 28 | ----- | Pinion | (1) |
| 29 | 18-01-3025 | Service Field Assembly | (1) |
| 31 | ----- | Brush Card | (1) |
| 32 | ----- | Washer | (1) |
| 33 | ----- | Ball Bearing - Rear | (1) |
| 35 | 45-24-0570 | Forward / Reverse Shuttle | (1) |
| 36 | 23-66-0427 | Switch | (1) |
| 37 | ----- | Connector Block | (1) |
| 38 | 40-50-1090 | Compression Spring | (1) |
| 39 | ----- | Handle - Left | (1) |
| 40 | ----- | Handle - Right | (1) |
| 42 | 06-82-0995 | M4 x 16mm Pan Hd. T-20 Screw | (9) |

| FIG. | PART NO. | DESCRIPTION OF PART | NO.REQ. |
|------|------------|---------------------------------|---------|
| 43 | 45-30-0255 | Rubber Slug | (4) |
| 44 | 16-01-3030 | Armature Assembly | (1) |
| 47 | ----- | Retaining Ring | (1) |
| 48 | 31-44-0695 | Handle Set | (1) |
| 49 | 45-22-0380 | Rubber Cap | (1) |
| 50 | 22-56-1450 | Switch/Connector Block Assembly | (1) |
| 56 | 34-40-1210 | O-Ring | (1) |
| 58 | 44-90-4540 | C-Ring | (1) |
| 61 | ----- | Wire Harness | (1) |
| 62 | ----- | Service Nameplate Kit | (1) |
| 63 | 10-20-2998 | Warning Label | (1) |
| 64 | ----- | Washer | (1) |
| 65 | 42-55-2665 | Carrying Case, Optional | (1) |
| 69 | 14-46-2070 | Camshaft/Hammer Service Kit | (1) |
| 70 | 45-88-1877 | Washer/Bearing Kit | (1) |
| 71 | 14-46-0755 | Spring/Washer/Bearing Kit | (1) |
| 72 | 05-88-0928 | M3 x 5mm Pan Hd. T10 Screw | (2) |
| 73 | 45-88-1980 | Spring Washer | (2) |
| 74 | ----- | Leadwire Assembly - Red | (1) |
| 75 | ----- | Leadwire Assembly - Black | (1) |
| 76 | 14-46-2395 | Leadwire/Screw/Washer Kit | (1) |
| 77 | 14-46-2024 | Brush Card Assembly | (1) |

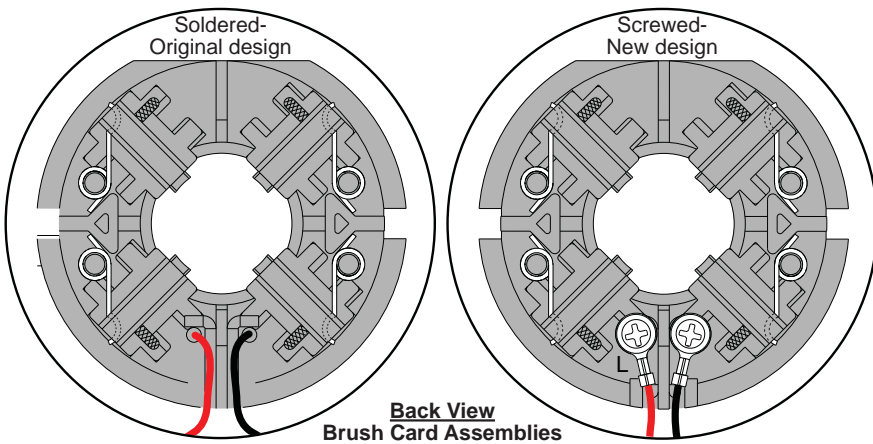
FIG. LUBRICATION
(Type 'Z' Grease, No. 49-08-7655):

20,21 Lightly coat the I.D. of the Ring Gear (20) and the center of the three Planet Gears (21) with grease.

19 Place a dab of grease in ball grooves of the Cam Shaft (19).

10 Lightly coat the front washer surface of Anvil (10) with grease, place a dab in the Ball hole on the backside of Anvil.

3 Coat outside grooves of Bushing (3) with grease.

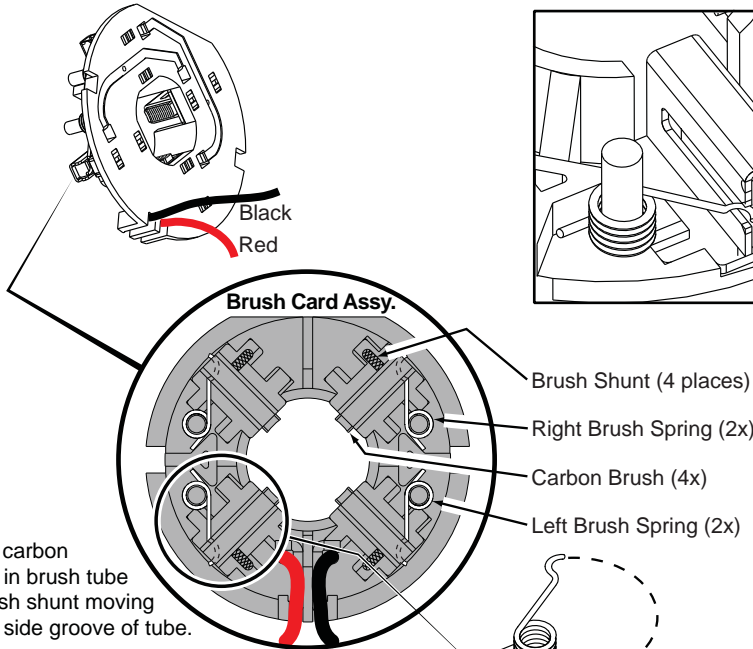


NOTE:
There are two Brush Card Assembly designs.

On the original brush card design the red and black wires that go to the switch are soldered on the brush card.

On the new brush card design the red and black wires that go to the switch are secured to the brush card with spring washers and screws.

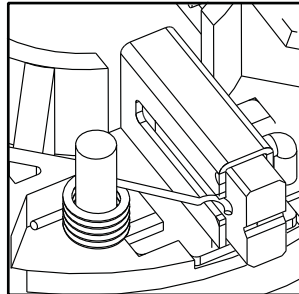
The new brush card design is **directly interchangeable** in tools that have the old brush card design.



Be sure carbon brush is in brush tube with brush shunt moving freely in side groove of tube.

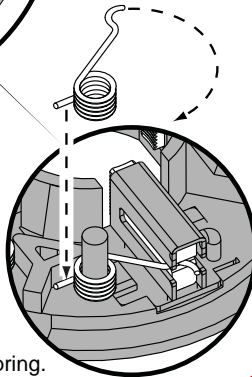
Place brush spring over post with short leg positioned downward as shown. Be sure spring is completely down with short leg trapped against 'Y' shaped wall on brush card.

While holding spring in place, bring the long leg of spring over the brush tube and through rear opening of tube. Position rounded hook of spring in groove on back of carbon brush. Be sure to check for free movement between carbon brush, brush shunt and brush spring.



NOTE:
As an aid to prevent damage to the armature commutator or the brushes when removing and installing the armature assembly, it is recommended to pull the carbon brushes partially back into the brush tube. The carbon brushes will be held in place with the brush spring moving from the rear of the brush to the side of the brush.

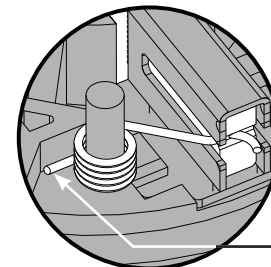
In the unlikely event that the spring pops off follow the instructions below.



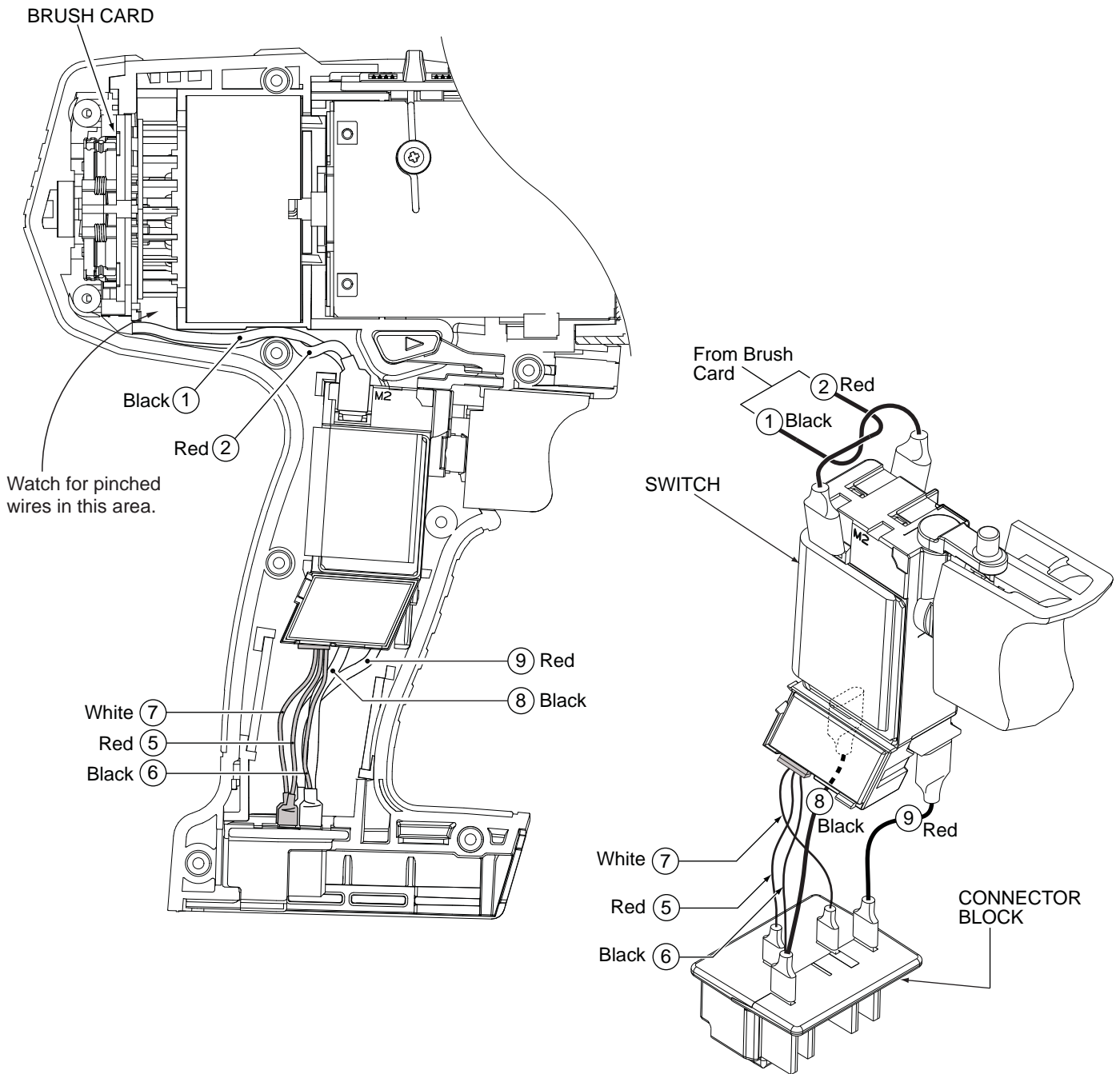
Wrong



Correct



Short leg of spring to the bottom



WIRING SPECIFICATIONS

| Wire No. | Wire Color | Origin or Gauge | Length | Terminals, Connectors and 1 or 2 End Wire Preparation |
|----------|------------|-----------------|--------|---|
| 1 | Black | ---- | ---- | Component of the Switch/Connector Block Assembly. |
| 2 | Red | ---- | ---- | Component of the Switch/Connector Block Assembly. |
| 5 | Red | ---- | ---- | Component of the Switch/Connector Block Assembly. |
| 6 | Black | ---- | ---- | Component of the Switch/Connector Block Assembly. |
| 7 | White | ---- | ---- | Component of the Switch/Connector Block Assembly. |
| 8 | Black | ---- | ---- | Component of the Switch/Connector Block Assembly. |
| 9 | Red | ---- | ---- | Component of the Switch/Connector Block Assembly. |
| | | | | |
| | | | | |

