



SERVICE PARTS LIST

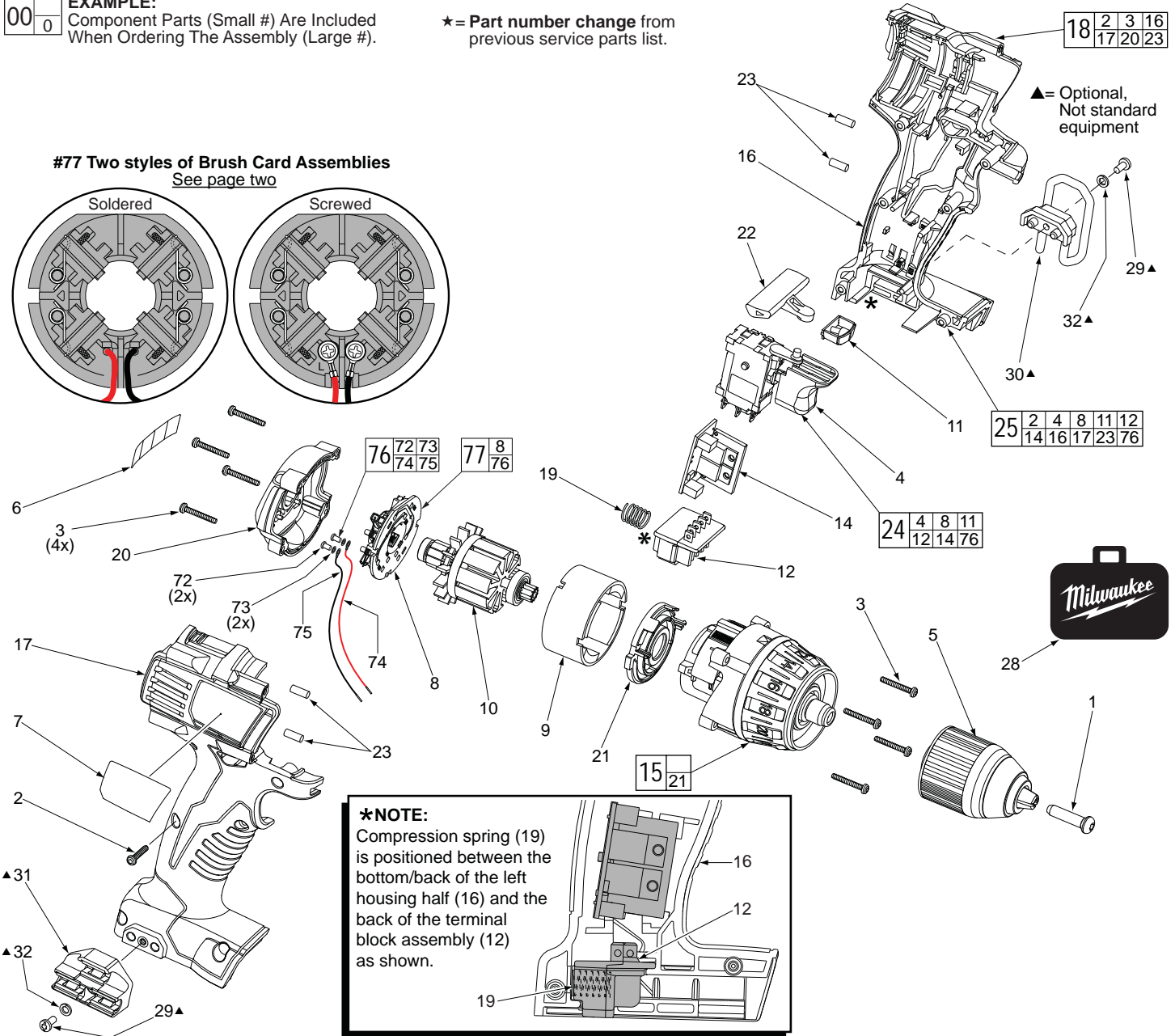
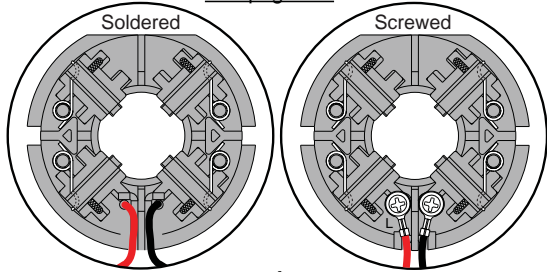
BULLETIN NO.
54-06-2611

SPECIFY CATALOG NO. AND SERIAL NO. WHEN ORDERING PARTS		REVISED BULLETIN	DATE
1/2" Compact Driver Drill		54-06-2610	Aug. 2014
CATALOG NO.	2601-20	WIRING INSTRUCTION	
STARTING SERIAL NO.	B28B	See Page 3	

EXAMPLE:
Component Parts (Small #) Are Included
When Ordering The Assembly (Large #).

★ = Part number change from
previous service parts list.

#77 Two styles of Brush Card Assemblies
See page two

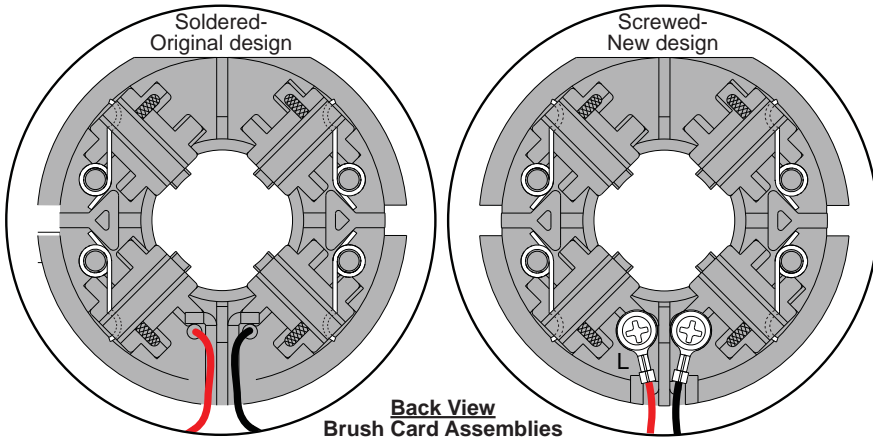


***NOTE:**
Compression spring (19)
is positioned between the
bottom/back of the left
housing half (16) and the
back of the terminal
block assembly (12)
as shown.

FIG.	PART NO.	DESCRIPTION OF PART	NO. REQ.
1	05-88-1500	M6 x 1 LH Chuck Screw	(1)
2	06-82-7236	#4-20 x .625 Pan Hd. Plast. T-10 Screw	(6)
3	06-82-7336	#4-20 x .750 Pan Hd. Plast. T-10 Screw	(8)
★ 4	-----	Switch	(1)
5	48-66-1275	Keyless Chuck Assembly	(1)
6	10-20-2695	Warning Label	(1)
7	12-20-0800	Service Nameplate	(1)
★ 8	-----	Brush Card	(1)
★ 9	18-01-3020	Service Field	(1)
★ 10	16-01-3000	Service Armature Assembly	(1)
★ 11	-----	LED Assembly	(1)
★ 12	-----	Terminal Block Assembly	(1)
★ 14	-----	PCB Assembly	(1)
★ 15	28-14-0661	Gearcase Assembly	(1)
★ 16	-----	Handle Halve-Left	(1)
★ 17	-----	Handle Halve-Right	(1)
★ 18	31-44-2600	Handle Halve Set	(1)
19	40-50-1090	Compression Spring	(1)
★ 20	-----	Housing End Cap	(1)

FIG.	PART NO.	DESCRIPTION OF PART	NO. REQ.
★ 21	-----	Motor Mount	(1)
★ 22	45-24-0910	Forward/Reverse Shuttle	(1)
★ 23	45-30-0255	Rubber Slug	(4)
★ 24	23-66-1233	Switch Assembly	(1)
★ 25	23-66-1232	Switch and Handle Halve Assembly	(1)
28	48-55-0960	Accessory Carrying Case	(1)
29	06-82-5275	6-32 x 5/16" Pan Hd. T-15 Screw, <i>Optional</i>	(2)
30	42-70-5150	Belt Hook, <i>Optional</i>	(1)
31	43-72-0550	Bit Holder, <i>Optional</i>	(1)
32	05-90-0225	Washer, <i>Optional</i>	(2)
72	05-88-0928	M3 x 5mm Pan Hd. T10 Screw	(2)
73	45-88-1980	Spring Washer	(2)
74	-----	Leadwire Assembly - Red	(1)
75	-----	Leadwire Assembly - Black	(1)
76	14-46-2399	Leadwire/Screw/Washer Kit	(1)
77	14-46-2012	Brush Card Assembly	(1)

MILWAUKEE ELECTRIC TOOL CORPORATION
13135 W. Lisbon Road, Brookfield, WI 53005
Drwg. 3

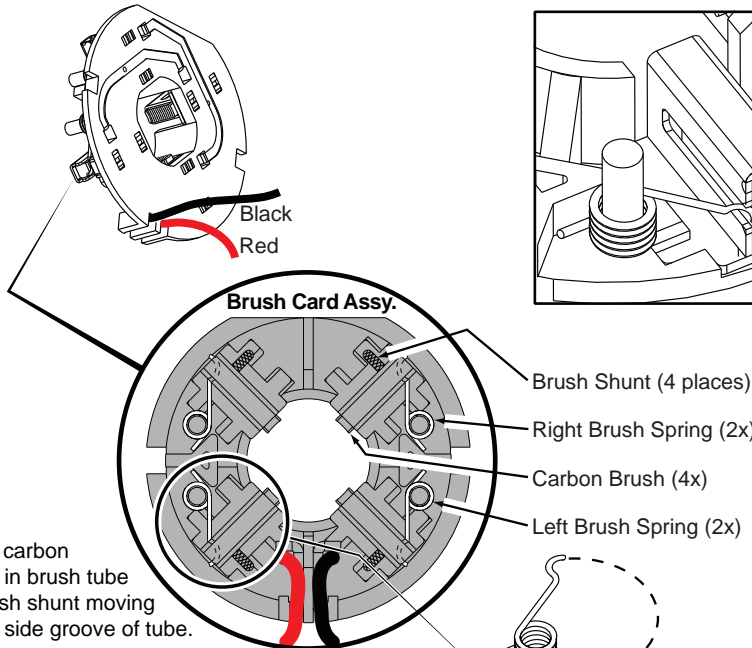


NOTE:
There are two Brush Card Assembly designs.

On the original brush card design the red and black wires that go to the switch are soldered on the brush card.

On the new brush card design the red and black wires that go to the switch are secured to the brush card with spring washers and screws.

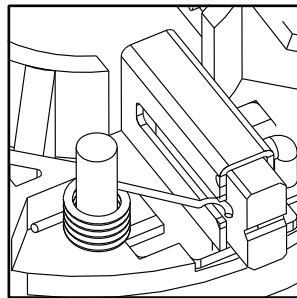
The new brush card design is **directly interchangeable** in tools that have the old brush card design.



Be sure carbon brush is in brush tube with brush shunt moving freely in side groove of tube.

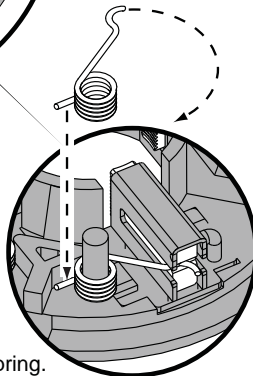
Place brush spring over post with short leg positioned downward as shown. Be sure spring is completely down with short leg trapped against 'Y' shaped wall on brush card.

While holding spring in place, bring the long leg of spring over the brush tube and through rear opening of tube. Position rounded hook of spring in groove on back of carbon brush. Be sure to check for free movement between carbon brush, brush shunt and brush spring.



NOTE:
As an aid to prevent damage to the armature commutator or the brushes when removing and installing the armature assembly, it is recommended to pull the carbon brushes partially back into the brush tube. The carbon brushes will be held in place with the brush spring moving from the rear of the brush to the side of the brush.

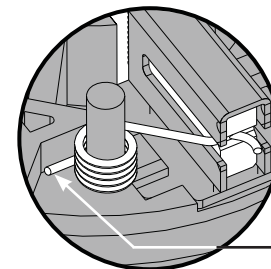
In the unlikely event that the spring pops off follow the instructions below.



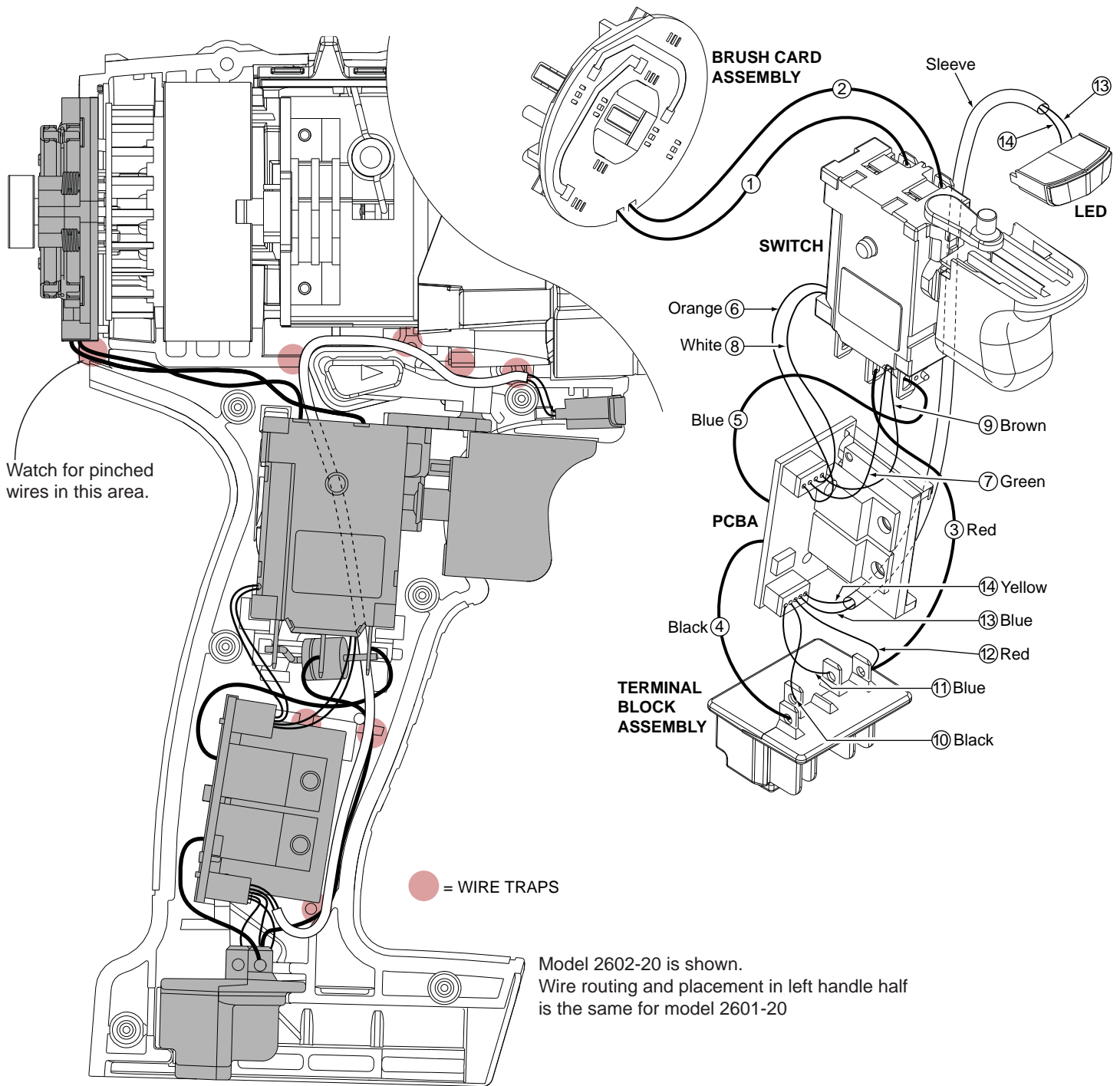
Wrong



Correct



Short leg of spring to the bottom



WIRING SPECIFICATIONS

Wire No.	Wire Color	Origin or Gauge	Length	Terminals, Connectors and 1 or 2 End Wire Preparation
1	Black	-----	-----	Component of Brush Card Assy. Connect to M2 on Switch.
2	Red	-----	-----	Component of Brush Card Assy. Connect to M1 on Switch.
3	Red	-----	-----	Component of Switch/Brush Card/Terminal Block Assembly.
4	Black	-----	-----	Component of Switch/Brush Card/Terminal Block Assembly.
5	Blue	-----	-----	Component of Switch/Brush Card/Terminal Block Assembly.
6	Orange	-----	-----	Component of Switch/Brush Card/Terminal Block Assembly.
7	Green	-----	-----	Component of Switch/Brush Card/Terminal Block Assembly.
8	White	-----	-----	Component of Switch/Brush Card/Terminal Block Assembly.
9	Brown	-----	-----	Component of Switch/Brush Card/Terminal Block Assembly.
10	Black	-----	-----	Component of Switch/Brush Card/Terminal Block Assembly.
11	Blue	-----	-----	Component of Switch/Brush Card/Terminal Block Assembly.
12	Red	-----	-----	Component of Switch/Brush Card/Terminal Block Assembly.
13	Blue	-----	-----	Component of Switch/Brush Card/Terminal Block Assy. (LED)
14	Yellow	-----	-----	Component of Switch/Brush Card/Terminal Block Assy. (LED)