

SERVICE PARTS LIST

BULLETIN NO.
54-40-2555

SPECIFY CATALOG NO. AND SERIAL NO. WHEN ORDERING PARTS		REVISED BULLETIN	DATE
M12 FUEL™ JIG SAW			July 2023
CATALOG NO.	2545-20	SERIAL NO.	N84A
		WIRING INSTRUCTION SEE PAGE 2-3	

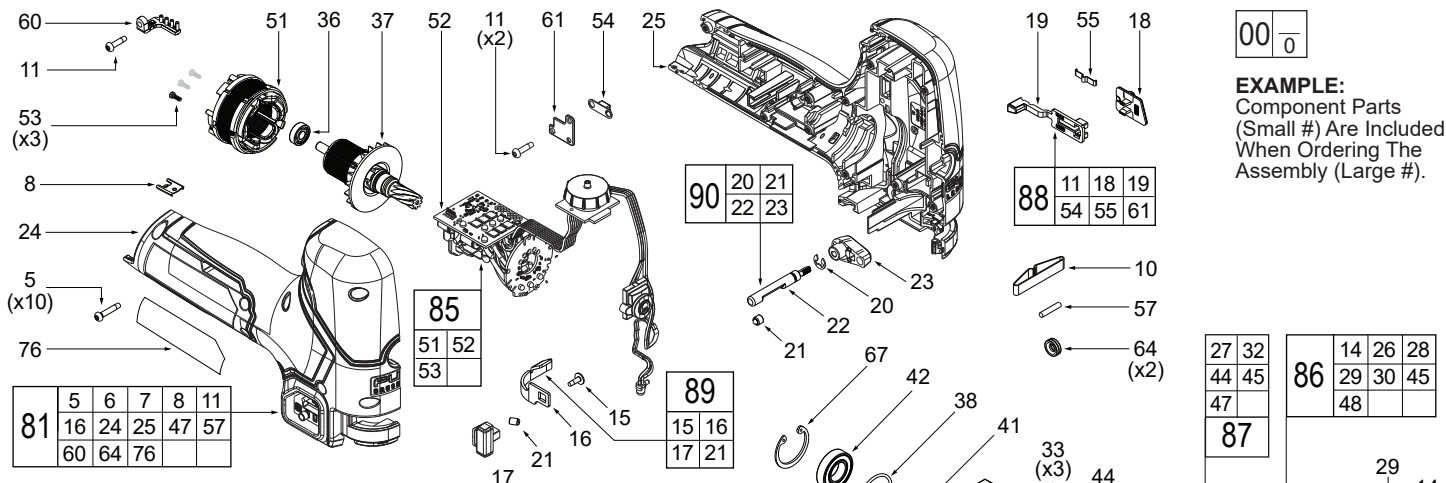


FIG.	PART NO.	DESCRIPTION OF PART	NO. REQ.
1	-----	Spring	(1)
2	-----	Ejection Pin	(2)
3	-----	M2.6 x 10mm Flat Head Self-tap. Screw	(1)
4	-----	Spring	(1)
5	06-82-6351	M3 x 16mm Pan Hd. Torx T-10B Screw	(10)
6	40-50-1001	Spring	(1)
7	44-10-5001	Rotating Lever	(1)
8	42-70-0058	Housing Connection Clip	(1)
9	49-96-0605	Hex Key	(1)
10	40-50-1812	Spindle Spring	(1)
11	06-82-1087	M3 x 12mm Pan Hd. Torx T-10B Screw	(3)
12	05-81-1050	M4 x 10mm Torx T-20 Screw	(6)
13	-----	MIM Pivot Bushing	(1)
14	-----	Cam Roller	(1)
15	-----	M2.6 x 8mm Washer Hd. Philips #1B	(1)
16	-----	Blower Shut-off Stamping	(1)
17	-----	Blower Button	(1)
18	-----	Switch Button	(1)
19	-----	Switch Slide	(1)
20	-----	E-Ring	(1)
21	-----	Resilient Assy	(1)
22	-----	Orbital Adjustment Cam	(1)
23	-----	Orbit Lever	(1)
24	-----	Handle Cover	(1)
25	-----	Handle Support	(1)
26	-----	Output Pin Shim	(1)
27	43-56-0008	Orbit Plate	(1)
28	-----	Helical Gear	(1)
29	-----	Drive Pin	(1)
30	-----	CW Shim	(1)
31	42-28-0532	Counter Weight	(1)
32	-----	Shim, Lower Orbit	(1)
33	-----	Dowell Pin 3mm x 18mm	(3)
34	-----	Frame	(1)
35	-----	Air Guide Plate	(1)
36	-----	Ball Bearing (Radial)	(1)
37	-----	Rotor	(1)
38	-----	Rubber O-Ring	(1)
39	06-55-0009	M6 Double Thread Nut, Barrel Grip	(1)
40	-----	Output Shaft	(1)
41	-----	Retaining Washer	(1)
42	-----	Ball Bearing	(1)
43	-----	Pin Dia2.5	(1)
44	-----	Output Shim	(1)
45	-----	Retaining Ring	(1)
46	-----	Orbit Plate Hold Rod	(1)
47	-----	Felt Seal	(1)
48	-----	Needle Bearing	(2)
51	-----	Stator	(1)
52	-----	PCBA	(1)
53	06-82-0243	M2 x 6mm Pan Hd Torx T-6 B Screw	(3)
54	-----	Gasket for Switch	(1)
55	-----	Switch Spring Plate	(1)
56	-----	Clamp Plate	(1)
57	-----	Rubber	(1)
58	-----	Spring Plate	(2)
59	23-94-2402	Guard Wire	(1)
60	-----	Light Pipe	(1)
61	-----	Switch Hold Down	(1)
62	31-15-0685	Base Cover	(1)
63	-----	Shoe Base	(1)
64	-----	Rubber Ring	(2)
65	-----	Shoe	(1)
66	-----	Black Pin	(1)
67	-----	Bevel Retaining Ring	(1)
68	-----	M6 x 24mm Double Thread Hex Screw	(1)
69	-----	Blade Clamp	(1)

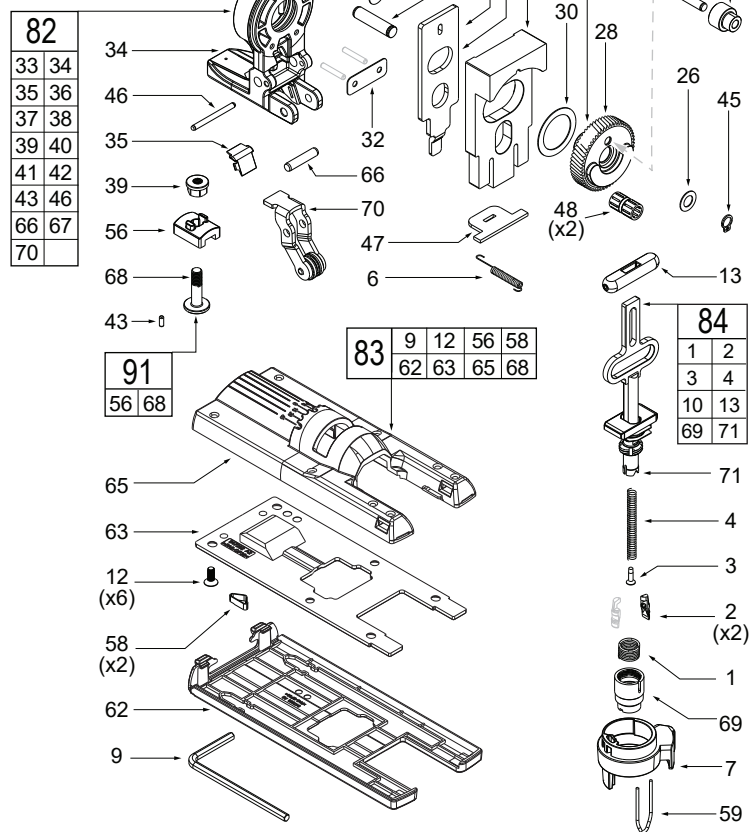


FIG.	PART NO.	DESCRIPTION OF PART	NO. REQ.
70	-----	Roller Assembly	(1)
71	-----	Saw Bar Assembly	(1)
76	12-20-2514	Service Nameplate	(1)
81	14-34-0029	Service Housing Kit	(1)
82	14-46-0429	Rotor Assembly	(1)
83	14-74-0113	Shoe Kit	(1)
84	14-46-0392	Spindle Kit	(1)
85	14-20-0573	Electronics and Stator Kit	(1)
86	14-29-0076	Gear Kit	(1)
87	14-46-0427	Orbit Plate Kit	(1)
88	14-46-0353	Switch Kit	(1)
89	14-46-0387	Blower Shut-off Kit	(1)
90	14-46-7005	Orbit Adjustment Kit	(1)
91	14-46-0428	Bevel Adjust Kit	(1)

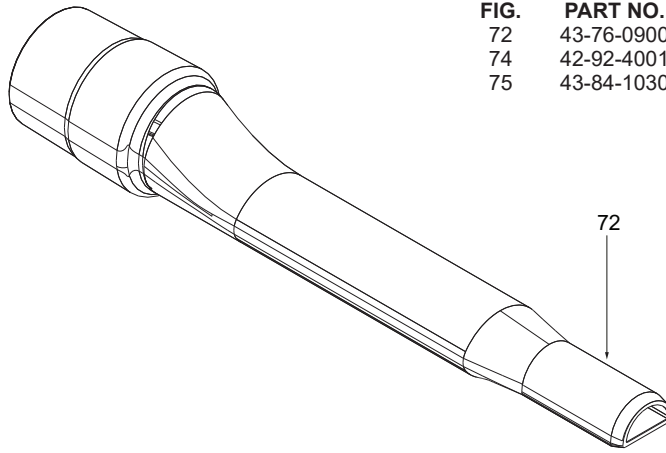
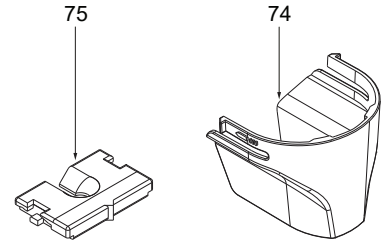
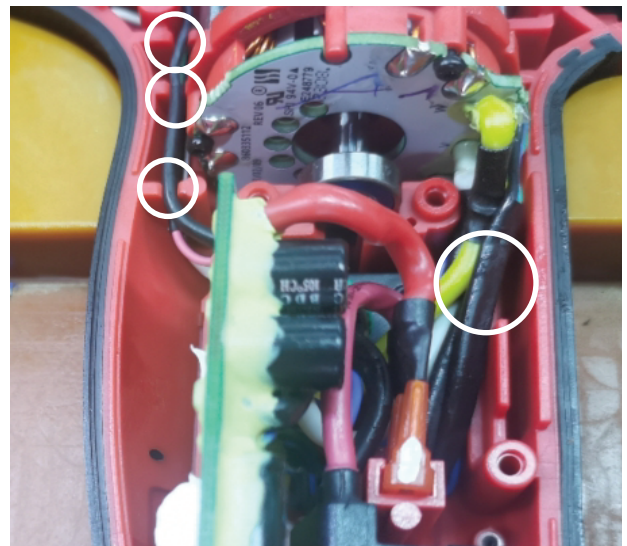
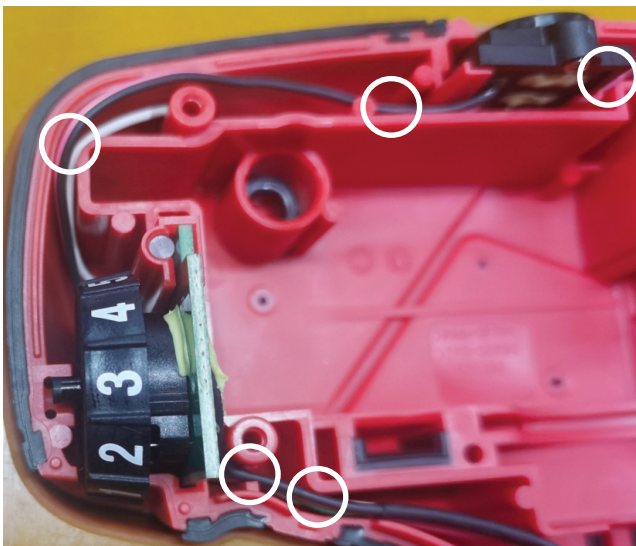
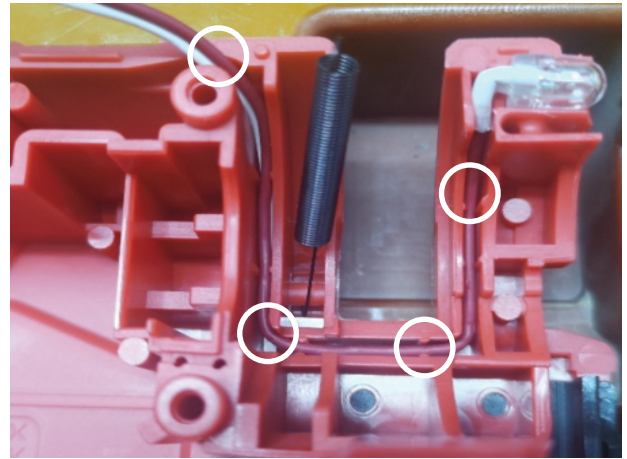
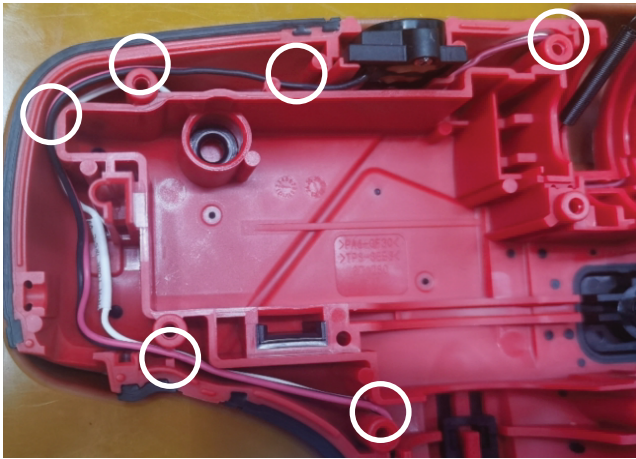


FIG.	PART NO.	DESCRIPTION OF PART	NO. REQ.
72	43-76-0900	Dust Tube	(1)
74	42-92-4001	Dust Cover	(1)
75	43-84-1030	Anti-Splintering Insert	(1)



Service Wiring



NOTE - As an aid to reassembly, take notice of wire routings and position in wire guides and traps while dismantling tool. Route wires into wire traps and channels as shown.

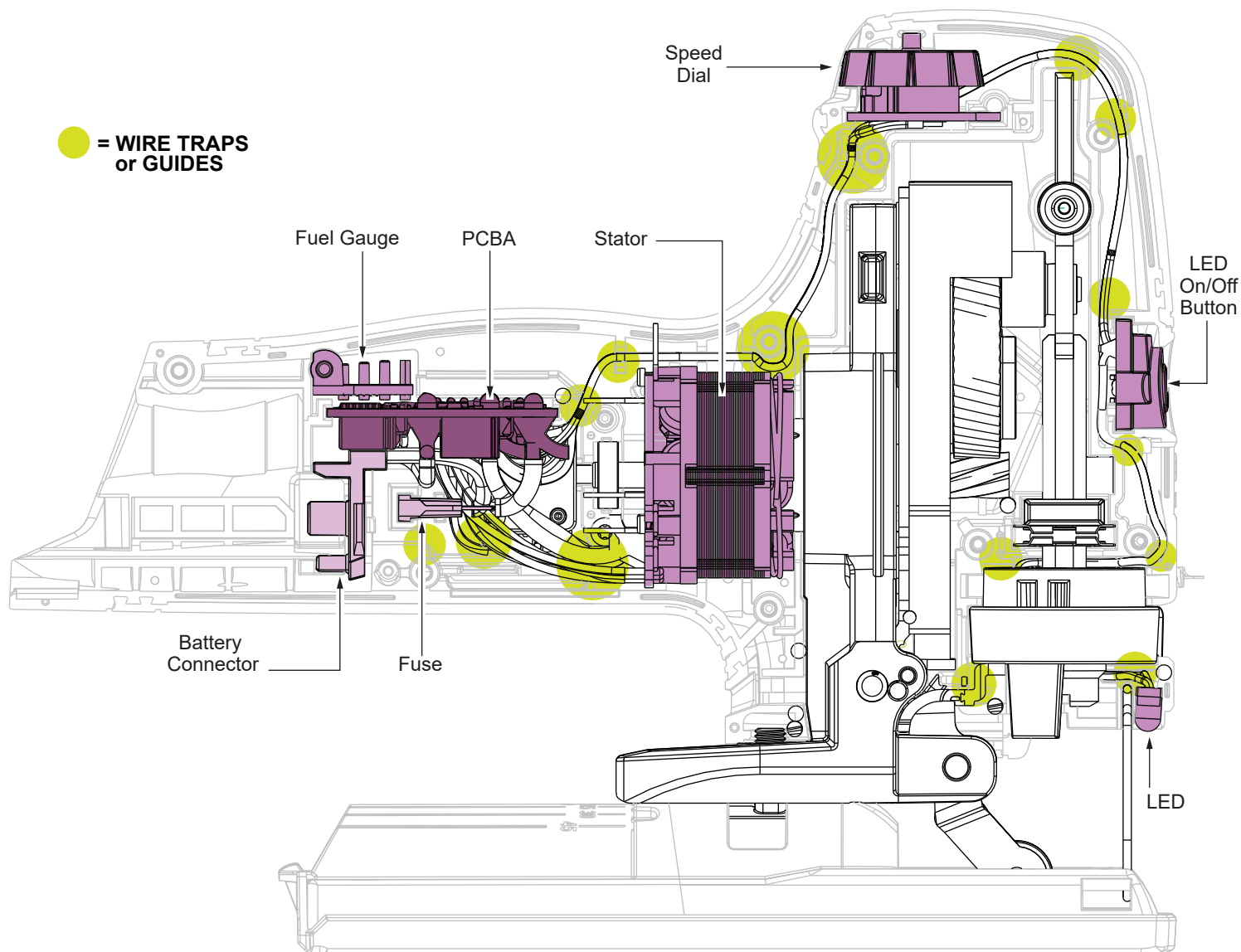
Be sure to place wires down into wire traps, being sure to remove any wire slack while routing.

Be sure all components of electronics assembly are seated firmly and squarely in the corresponding cavity of handle support.

Be sure there are no interferences when installing handle cover over handle support. Watch for pinched wires.

Check for proper functionality of slide buttons and speed dial prior to installing battery.

Service Wiring

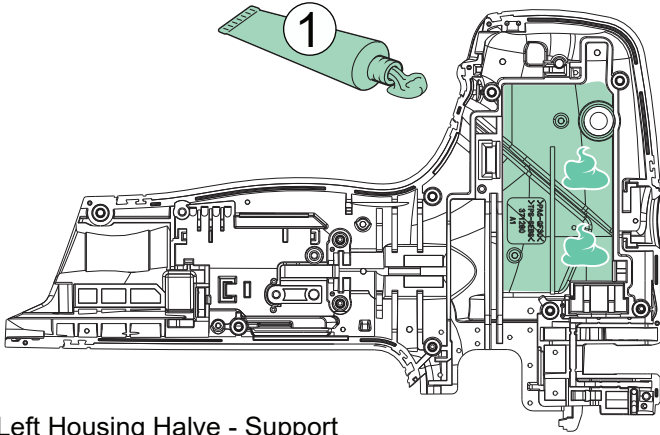


Torque Specifications

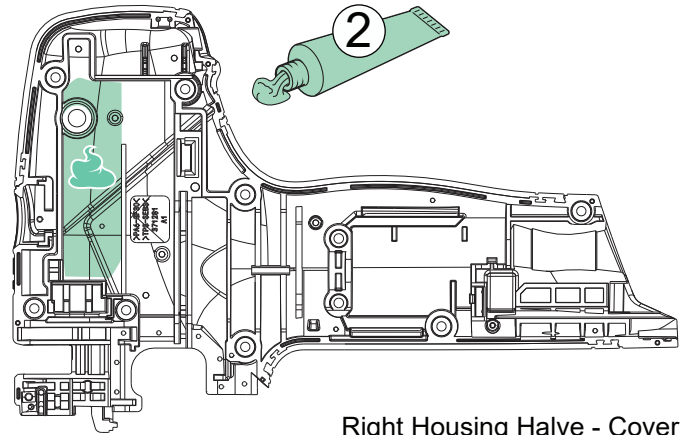
SCREW TORQUE SPECIFICATIONS

FIG.	PART NO.	DESCRIPTION OF FASTENER	WHERE USED	SEAT TORQUE	
				(kgf-cm)	(lb-in)
5	06-82-6351	M3 x 16mm Pan Hd. Torx T-10B Screw	Handle Cover	10 ± 1	8.7 ± 0.9
11	06-82-1087	M3 x 12mm Pan Hd. Torx T-10B Screw	Light Pipe Screw (Qty 1)	4.5 ± 0.5	4 ± 0.4
11	06-82-1087	M3 x 12mm Pan Hd. Torx T-10B Screw	Switch Holder (Qty 2)	6 ± 1	5.2 ± 0.9
12	05-81-1050	M4 x 10mm Torx T-20 Screw	Fasten Shoe Base on Shoe	23 ± 3	20 ± 2.6
15	-----	M2.6 x 8mm Washer Hd. Philips #1B	Blower Shut-off on bottom	15 ± 1	13 ± 0.9
53	06-82-0243	M2 x 6mm Pan Hd Torx T-6 B Screw	Fasten PCBA on Stator	1.5 ± 0.5	1.3 ± 0.4
68	-----	M6 x 24mm Double Thread Hex Screw	Fasten Shoe Assembly on Frame	70 ± 5	60 ± 4.3

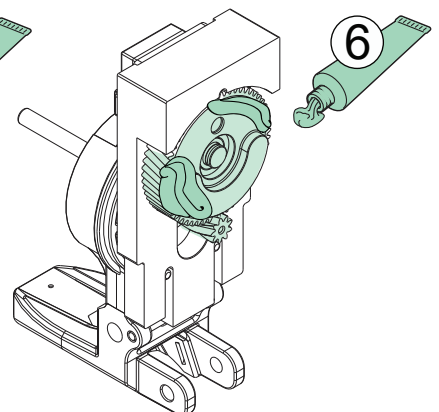
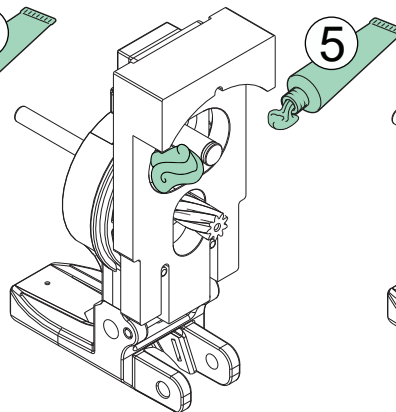
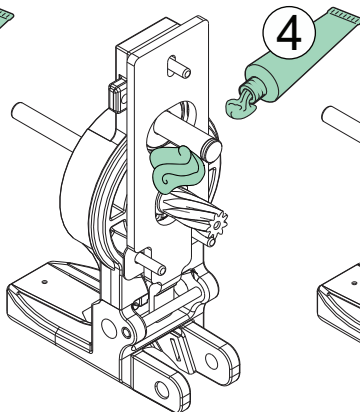
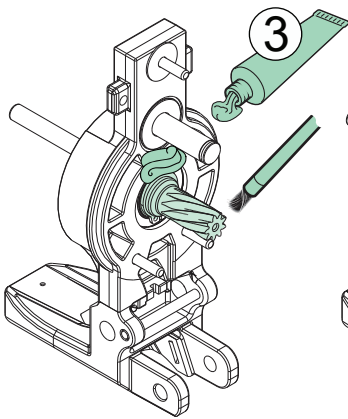
Lubrication Notes



Left Housing Halve - Support



Right Housing Halve - Cover



Type 'J' Grease

No. 49-08-4220, 1 lb. can

When servicing gears or Gear Case, 90-95% of the old grease must be removed prior to new grease being added. Clean gear assemblies with a clean, dry cloth.

- 1 Place two separate dabs - 3.5 grams each - of 'J' grease (7 grams total) into the cavity of the Left Housing Support (25). Also brush grease on the Rotor Pinion (37) being sure to cover all the teeth.
- 2 Place a dab of grease (about 3 grams) into the Right Housing Cover (24).
- 3 Place 2 grams of grease on the Frame (34) between the Output Shaft (40) and the Rotor Pinion.
- 4 Place the Orbit Plate (27) on the Frame and then add another 2 grams of grease between the Output Shaft and the Rotor Pinion.
- 5 Place the Counter Weight (31) to the Frame and then add another 2 grams of grease in the opening of the weight - next to the Output Shaft.
- 6 Add another 2 grams of grease around the Helical Gear (28) and the Rotor Pinion.
- 7 Add another 2 dabs of grease - 3.5 grams each - to the top of the parts assembled in the Housing Support as shown. Spread over the Counter Weight and Helical Gear and Saw Bar Assembly (71) top portion as shown.

