



SERVICE PARTS LIST

BULLETIN NO.
54-40-2431

SPECIFY CATALOG NO. AND SERIAL NO. WHEN ORDERING PARTS		REVISED BULLETIN	DATE
CORDLESS M12 COMPACT BAND SAW		54-40-2430	May 2018
CATALOG NO. 2429-20	STARTING SERIAL NO. E25B	WIRING INSTRUCTION SEE PAGE 3	

EXAMPLE:
Component Parts (Small #)
Are Included When Ordering
The Assembly (Large #).

**SEE ADJACENT PAGES
FOR ADDITIONAL SERVICE
NOTES, LUBRICATION
AND WIRING**

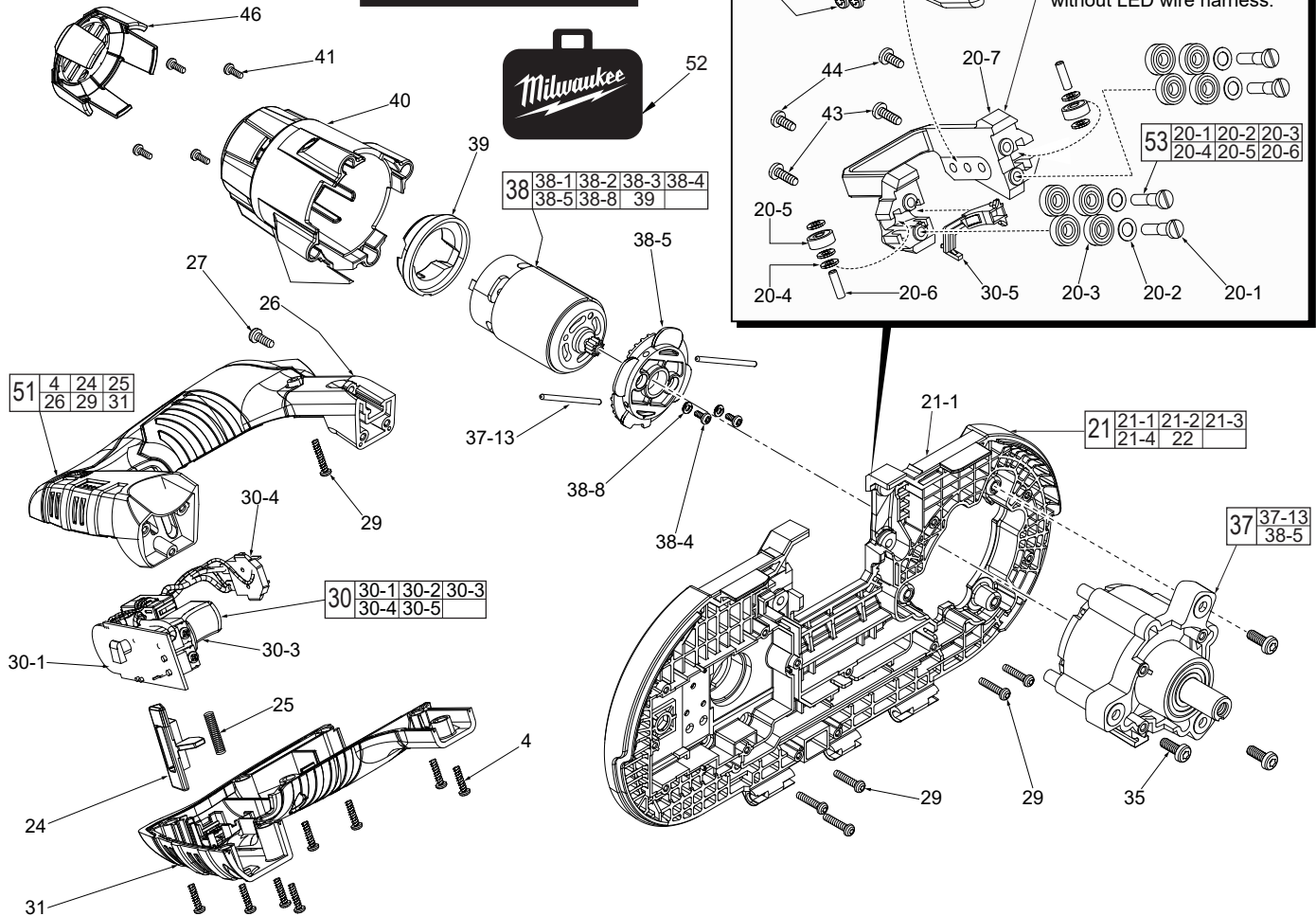
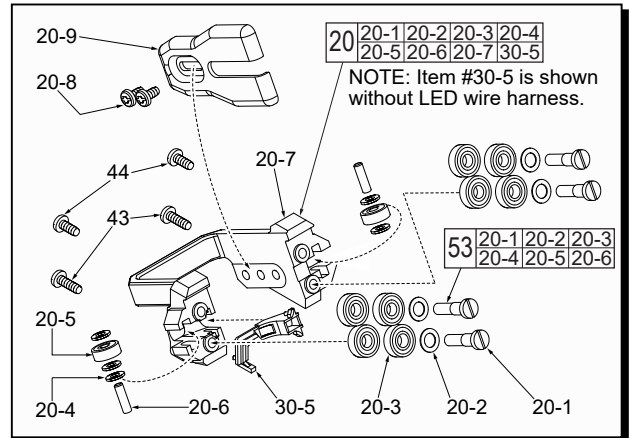


FIG.	PART NO.	DESCRIPTION OF PART	NO. REQ.
4	06-82-7225	4-20 x 1/2" Pan Hd. Plast. T-10 Screw	(8 of 22)
20	42-28-2429	Blade Guide Assembly	(1)
20-1	-----	12-24 x .96 Slotted UNC Screw	(4)
20-2	-----	Washer	(4)
20-3	-----	Ball Bearing	(8)
20-4	-----	Washer	(5)
20-5	-----	Ball Bearing	(2)
20-6	-----	Steel Pin	(2)
20-7	42-28-2430	Blade Guide	(1)
20-8	06-82-8828	8-32 x 5/16" Pan Hd. Taptite T-20 Screw	(2)
20-9	42-38-2429	Bumper	(1)
21	28-95-2430	Deck Assembly	(1)
21-1	-----	Deck	(1)
★ 24	-----	Shuttle	(1)
★ 25	40-50-0270	Shuttle Spring	(1)
★ 26	-----	Handle Support	(1)
27	06-82-3001	Pan Hd. Taptite Phillips Screw	(1)
29	06-82-2025	Pan Hd. Plastite T-10 Screw	(6)
30	23-66-4500	Switch Assembly	(1)
30-1	-----	PCB Assembly	(1)
30-2	23-48-2429	Fiber Tube (Not Shown, see wiring pages)	(2)
30-3	-----	Switch	(1)
30-4	-----	Battery Contact Plate	(1)
30-5	22-80-2429	LED Holder	(1)
★ 31	-----	Handle Cover	(1)
35	06-82-7409	8-16 x 1/2" Pan Hd. Plastite T-20 Screw	(3)

FIG.	PART NO.	DESCRIPTION OF PART	NO. REQ.
37	14-30-2429	Gear Box Assembly	(1)
37-13	-----	Pin	(2)
38	14-30-2430	Motor Assembly	(1)
38-1	23-94-2429	Red Motor Wire (Not Shown, see wiring)	(1)
38-2	23-94-2430	White Motor Wire (Not Shown, see wiring)	(1)
38-3	23-48-2430	Fiber Tube (Not Shown, see wiring)	(1)
38-4	05-81-0205	M3 x 6 Pan Hd. Phillips Screw	(2)
38-5	-----	Motor Mount Bracket	(1)
38-8	45-88-1980	3mm Lock Washer	(2)
39	31-12-2429	Rubber Motor Ring	(1)
40	31-15-2430	Motor Cover	(1)
41	06-82-3002	Pan Hd. Taptite T-10 ST Screw	(4)
43	06-82-5316	8-32 x 0.5" Pan Hd. Taptite T-20 Screw	(2)
44	06-82-7253	8-32 x .375" Pan Hd. Taptite T-20 Screw	(3)
46	42-52-2429	Motor Housing Cap	(1)
★ 51	31-44-2002	Handle Assembly	(1)
52	42-55-2429	Carrying Case	(1)
53	14-46-0465	Guide Roller Kit	(1)

MILWAUKEE ELECTRIC TOOL CORPORATION
13135 W. LISBON RD., BROOKFIELD, WI 53005

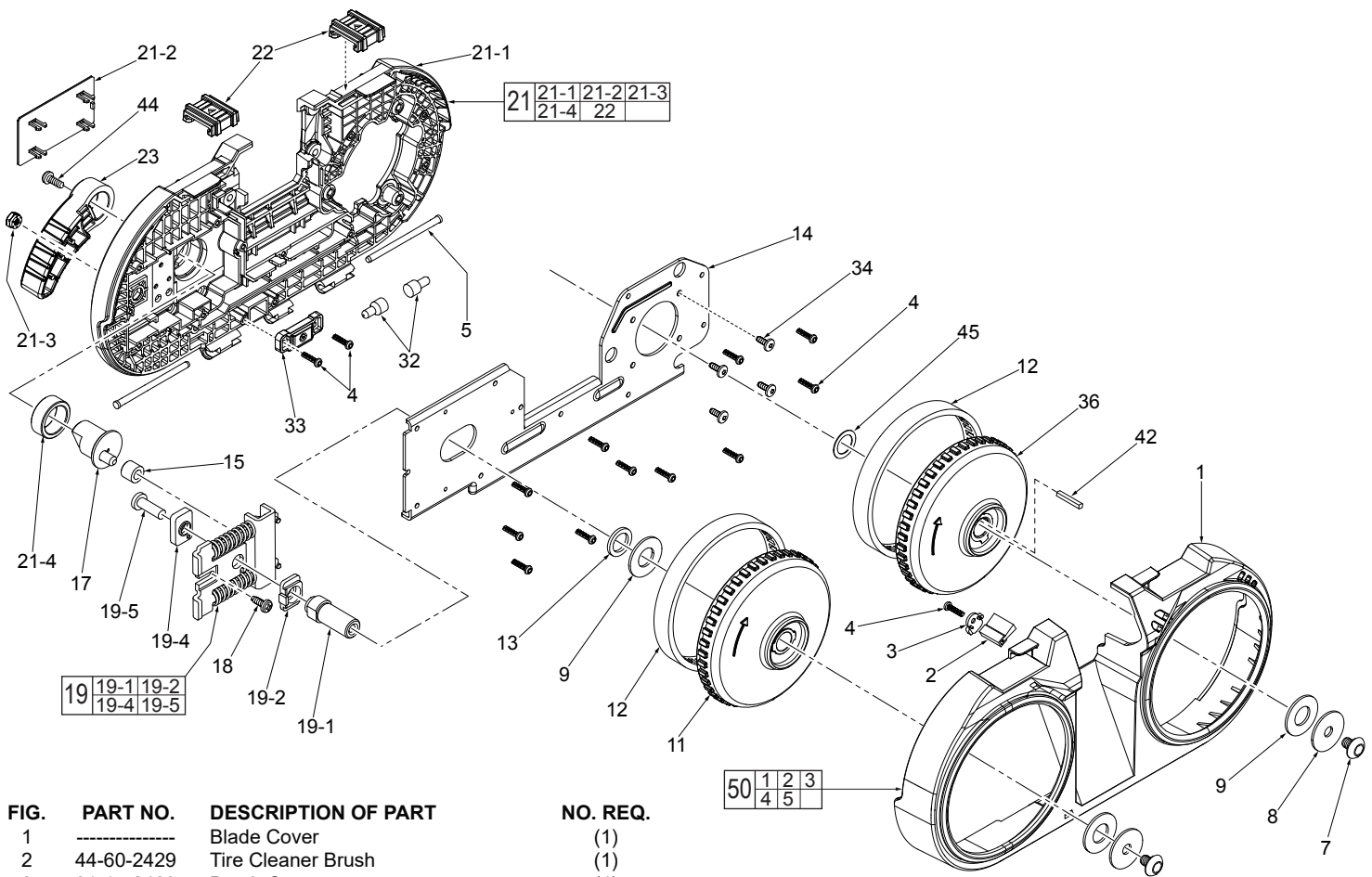


FIG.	PART NO.	DESCRIPTION OF PART	NO. REQ.
1	-----	Blade Cover	(1)
2	44-60-2429	Tire Cleaner Brush	(1)
3	31-15-2429	Brush Cover	(1)
4	06-82-7225	4-20 x 1/2" Pan Hd. Plast. T-10 Screw	(14 of 22)
5	06-65-2429	Steel Pin	(2)
7	06-82-0040	1/4" x 20 UNC-2A TH Hex Screw	(2)
8	45-88-0832	Steel Washer	(2)
9	45-88-0545	Plastic Washer	(3)
11	28-95-0030	Front Pulley Assembly	(1)
12	45-69-0030	Pulley Tire	(2)
13	45-88-2429	Flat Washer	(1)
14	42-92-2429	Deck Cover Plate	(1)
15	42-40-1010	Bushing	(1)
17	45-08-0065	Blade Release Shaft Assembly	(1)
18	06-82-3000	Screw	(1)
19	42-18-2429	Blade Tension Bar Assembly	(1)
19-1	42-12-2429	Front Pulley Axle	(1)
19-2	45-88-2430	Angle Washer	(1)
19-4	45-88-2431	Block Washer	(1)
19-5	06-82-5382	1/4-20 x 3/4" Pan Hd. Taptite T-27 Screw	(1)
21	28-95-2430	Deck Assembly	(1)
21-1	-----	Deck	(1)
21-2	22-68-2429	Logo Plate	(1)
21-3	06-57-2429	Hex Nut	(1)
21-4	42-40-0640	Sleeve Bearing	(1)
22	14-46-2430	Latch	(2)
23	31-52-2429	Blade Release Lever	(1)
32	22-56-0150	Connector	(2)
33	14-46-2431	Wear Block Assembly	(1)
34	06-95-0075	6-32 x 3/8" Truss Hd. Taptite T-10 Screw	(4)
36	44-77-0170	Rear Pulley	(1)
42	43-96-0105	Flat Key	(1)
44	06-82-7253	8-32 x .375" Pan Hd. Taptite T-20 Screw	(3)
45	45-88-2432	Flat Washer	(1)
50	14-46-2429	Blade Cover Assembly	(1)