



SERVICE PARTS LIST

BULLETIN NO.
55-06-2415

SPECIFY CATALOG NO. AND SERIAL NO. WHEN ORDERING PARTS		REVISED BULLETIN	DATE
12 VOLT 3/8" RAD DRILL			Jan. 2014
CATALOG NO.	2415-059	STARTING SERIAL NO.	D24A
		WIRING INSTRUCTION SEE REVERSE SIDE	

EXAMPLE:

00	0
----	---

 Component Parts (Small #) Are Included
 When Ordering The Assembly (Large #).

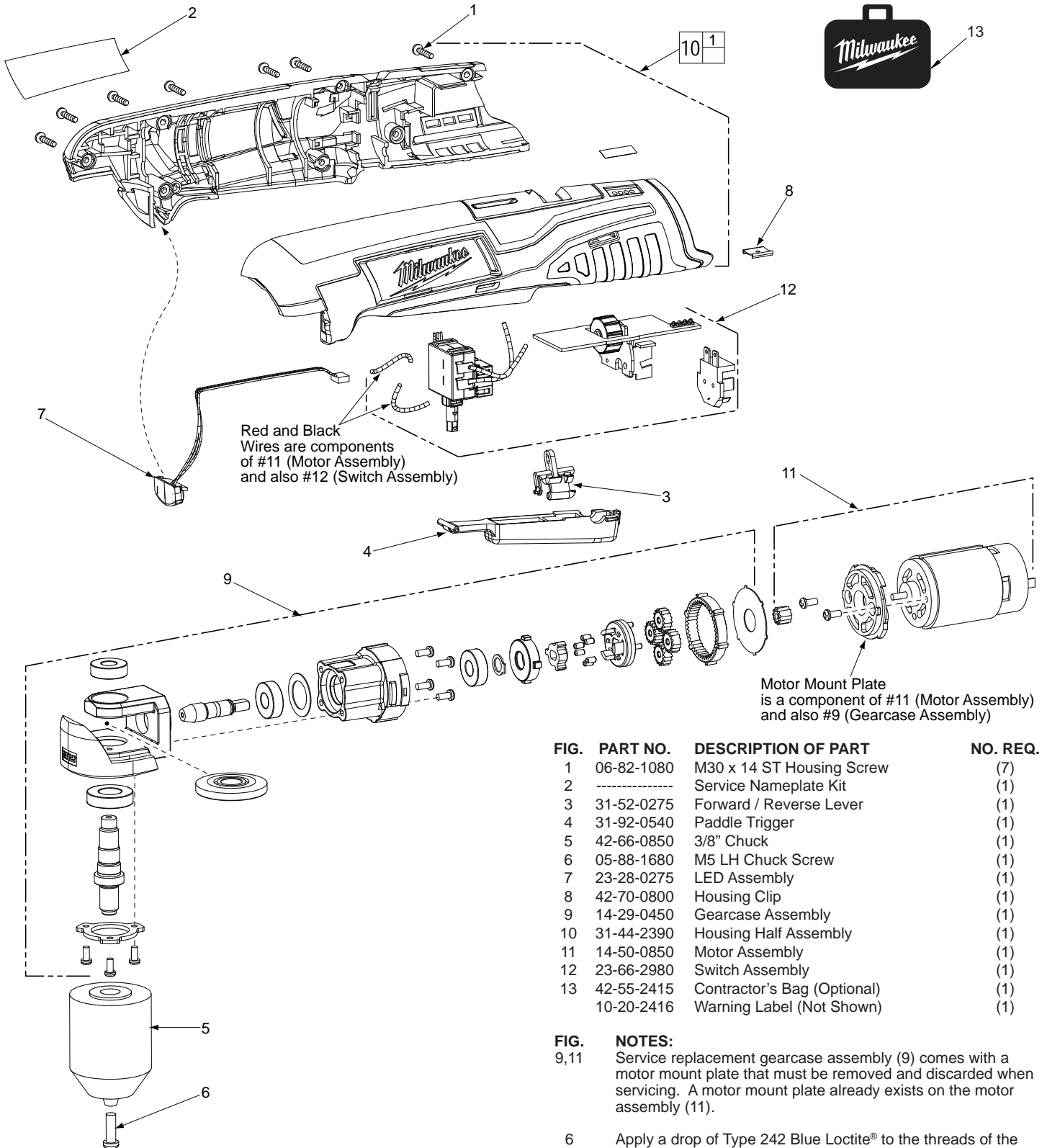
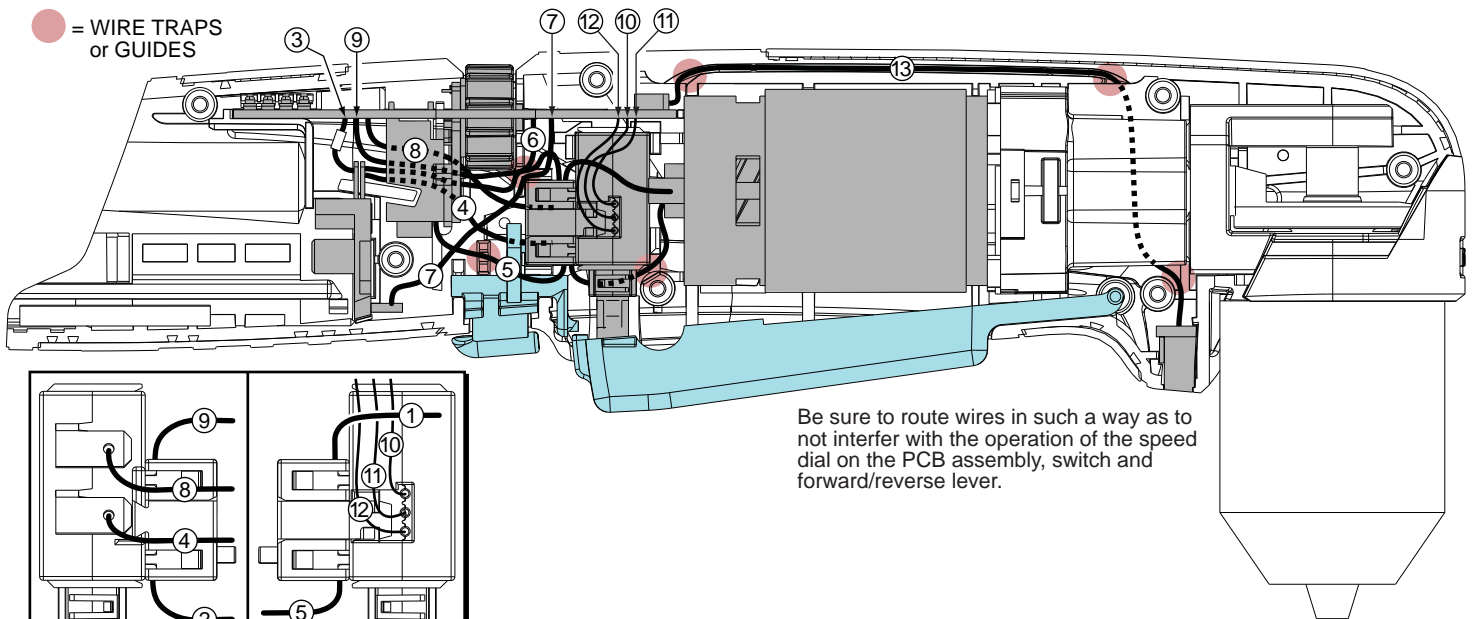


FIG.	PART NO.	DESCRIPTION OF PART	NO. REQ.
1	06-82-1080	M30 x 14 ST Housing Screw	(7)
2	-----	Service Nameplate Kit	(1)
3	31-52-0275	Forward / Reverse Lever	(1)
4	31-92-0540	Paddle Trigger	(1)
5	42-66-0850	3/8" Chuck	(1)
6	05-88-1680	M5 LH Chuck Screw	(1)
7	23-28-0275	LED Assembly	(1)
8	42-70-0800	Housing Clip	(1)
9	14-29-0450	Gearcase Assembly	(1)
10	31-44-2390	Housing Half Assembly	(1)
11	14-50-0850	Motor Assembly	(1)
12	23-66-2980	Switch Assembly	(1)
13	42-55-2415	Contractor's Bag (Optional)	(1)
	10-20-2416	Warning Label (Not Shown)	(1)

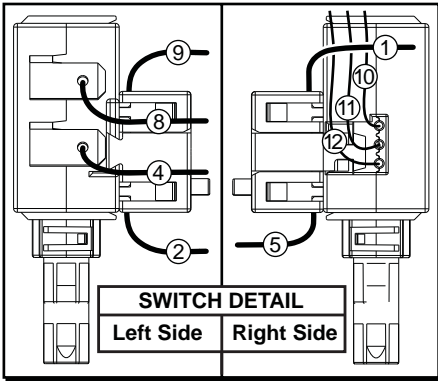
FIG. 9,11 NOTES:
 Service replacement gearcase assembly (9) comes with a motor mount plate that must be removed and discarded when servicing. A motor mount plate already exists on the motor assembly (11).

6 Apply a drop of Type 242 Blue Loctite® to the threads of the motor mount screws and the chuck screw (6).

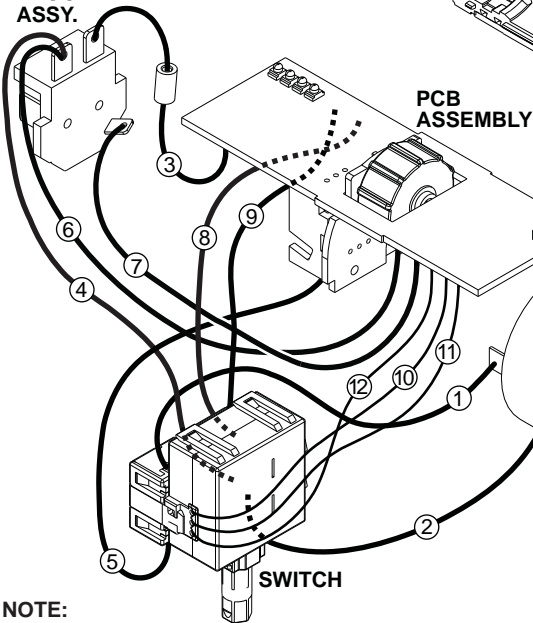
● = WIRE TRAPS or GUIDES



Be sure to route wires in such a way as to not interfere with the operation of the speed dial on the PCB assembly, switch and forward/reverse lever.



TERMINAL BLOCK ASSY.



NOTE:
SWITCH ASSEMBLY (23-66-2980) CONSISTS OF: SWITCH, PC BOARD AND TERMINAL BLOCK ASSY.

GEARCASE ASSEMBLY

LEFT HANDLE HALF

LED ASSEMBLY

WIRING SPECIFICATIONS

Wire No.	Wire Color	Origin or Gauge	Length	Terminals, Connectors and 1 or 2 End Wire Preparation
1	Black	Motor Assy.	-----	Connect from Motor (pos. terminal) to Switch.
2	Red	Motor Assy.	-----	Connect from Motor (neg. terminal) to Switch.
3	Black	Switch Assy.	-----	Attached to the PC Board and Terminal Block.
4	Red	Switch Assy.	-----	Attached to the Switch and Terminal Block.
5	White	Switch Assy.	-----	Attached to the Switch and the PC Board.
6	Red	Switch Assy.	-----	Attached to the PC Board and Terminal Block.
7	White	Switch Assy.	-----	Attached to the PC Board and Terminal Block.
8	Black	Switch Assy.	-----	Attached to the Switch and the PC Board.
9	Red	Switch Assy.	-----	Attached to the Switch and the PC Board.
10	Yellow	Switch Assy.	-----	Attached to the Switch and the PC Board.
11	Blue	Switch Assy.	-----	Attached to the Switch and the PC Board.
12	Black	Switch Assy.	-----	Attached to the Switch and the PC Board.
13	-----	LED Assy.	-----	Attach connector end of 4 wire ribbon to PC Board.