



# SERVICE PARTS LIST

**BULLETIN NO.**  
**55-24-2410**

SPECIFY CATALOG NO. AND SERIAL NO. WHEN ORDERING PARTS			REVISED BULLETIN	DATE
<b>Cordless 12 Volt 3/8" Hammer-Drill</b>				Nov. 2011
<b>CATALOG NO.</b>	<b>2411-059</b>	<b>STARTING SERIAL</b>	<b>WIRING INSTRUCTION</b>	
		<b>D23A</b>	<b>SEE REVERSE SIDE</b>	

**EXAMPLE:**  

00	0
----	---

 Component Parts (Small #)  
 Are Included When Ordering  
 The Assembly (Large #).

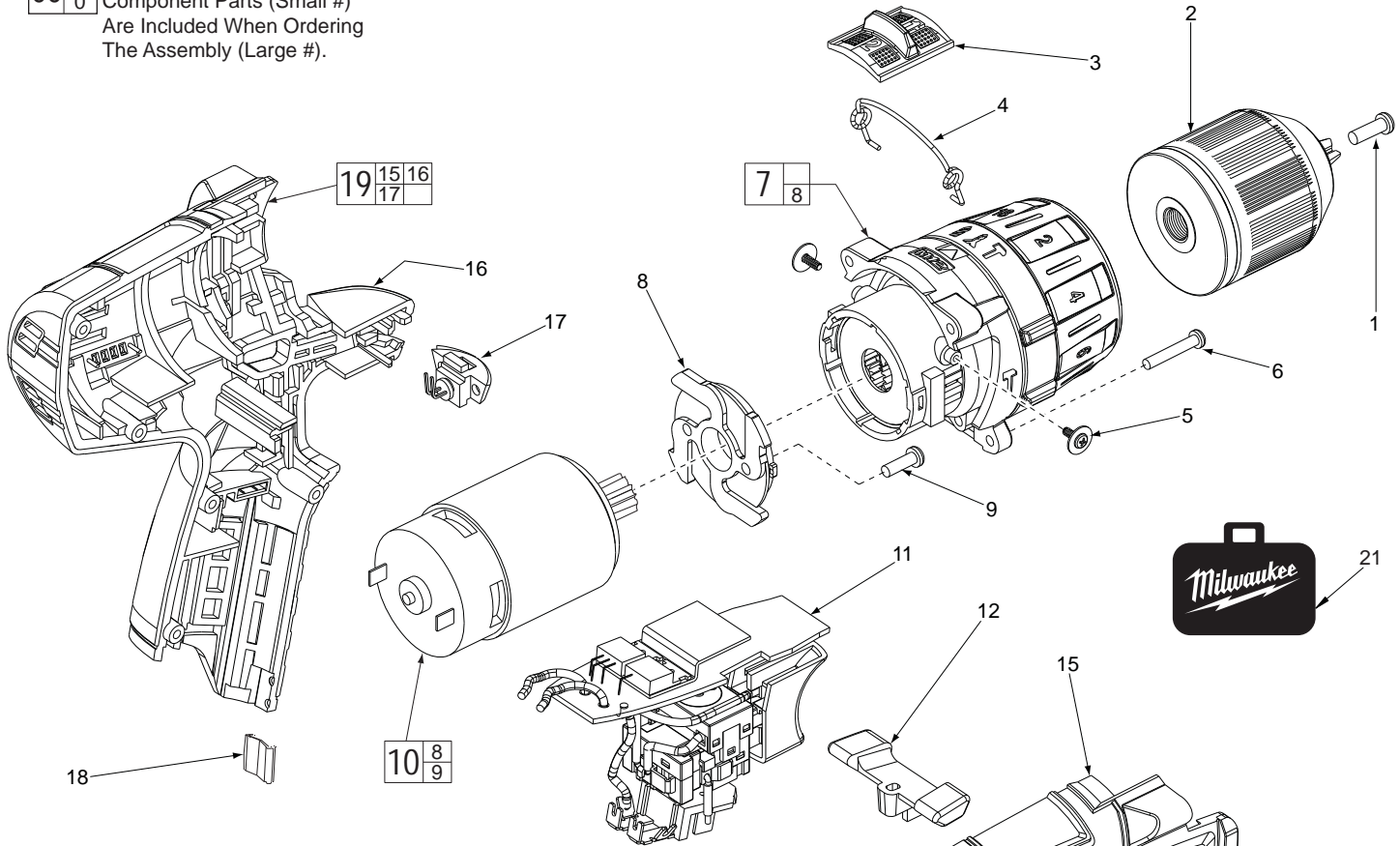
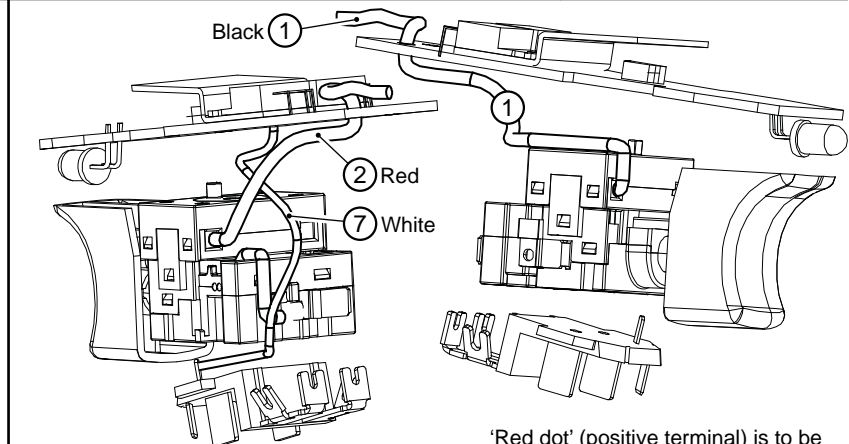
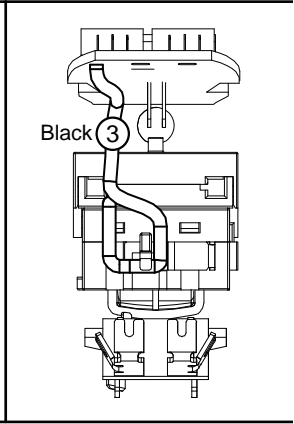
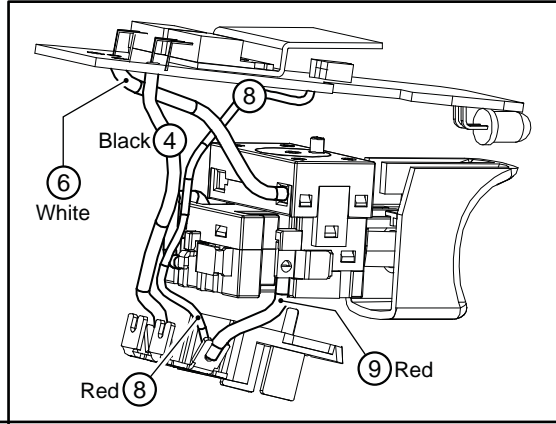
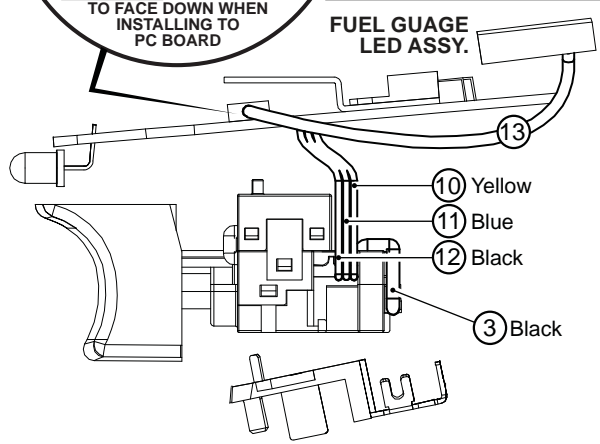
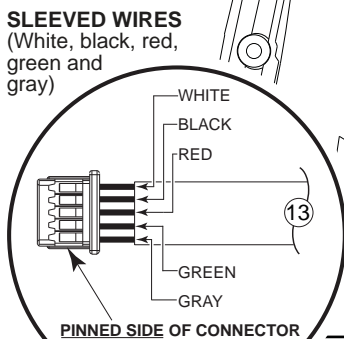
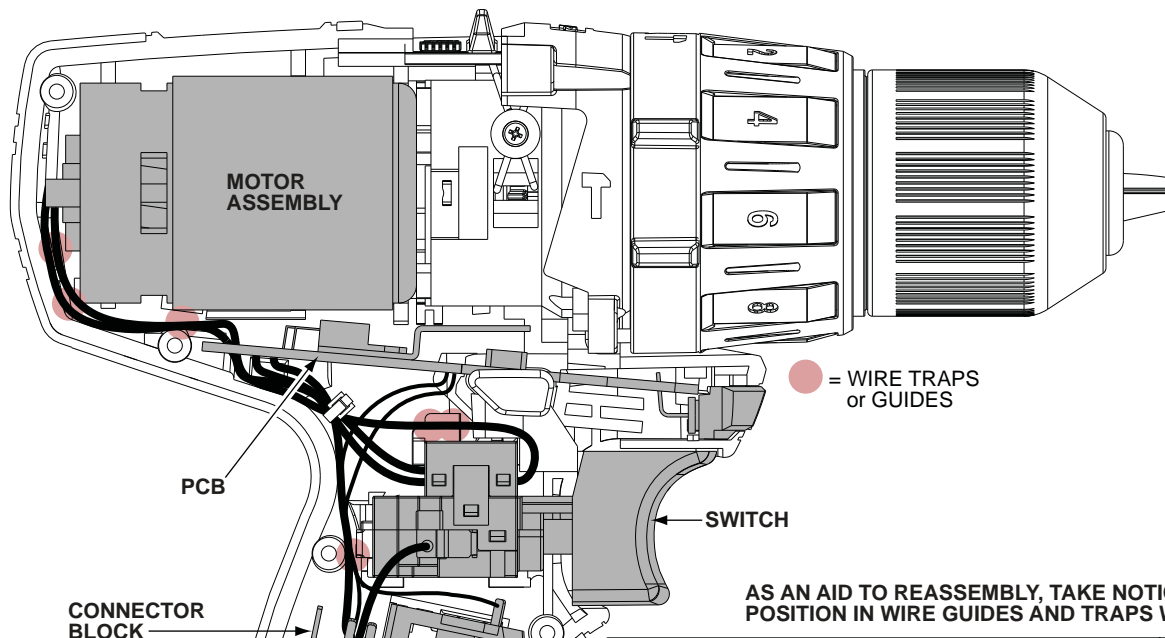


FIG.	PART NO.	DESCRIPTION OF PART	NO. REQ.
1	05-88-1680	M5 x 13.5 LH Chuck Screw	(1)
2	42-66-0530	3/8" Keyless Chuck	(1)
3	45-24-0325	Speed Slide	(1)
4	44-10-0720	Speed Selector Wire Link	(1)
5	05-81-0535	M2.3 x 4.5 Philips Shift Lever Screw	(2)
6	05-88-0780	M3 x 18 ST T-10 Gearcase Screw	(4)
7	14-30-1080	Gearcase Assembly	(1)
8	-----	Motor Mounting Plate	(1)
9	-----	Motor Mounting Screw	(2)
10	23-30-0830	Motor Assembly	(1)
11	23-66-4000	Switch Assembly	(1)
12	45-24-0275	Forward/Reverse Lever	(1)
13	-----	Service Nameplate	(1)
14	06-82-1080	M3 x 14 ST T-10 Housing Screw	(5)
15	-----	Right Housing	(1)
16	-----	Left Housing	(1)
17	31-15-1575	LED Cover	(1)
18	42-70-0055	Housing Clip	(1)
19	31-44-2580	Housing Kit	(1)
20	10-20-2886	Warning Label (Not Shown)	(1)
21	42-55-2480	Carrying Case, Optional	(1)

**FIG. 7, 8, 10 NOTES:**  
 Service replacement gearcase assembly (7) comes with a motor mount plate (8) that must be removed and discarded when servicing. A motor mount plate already exists on the motor assembly (10).



WIRING SPECIFICATIONS				
Wire No.	Wire Color	Origin or Gauge	Length	Terminals, Connectors and 1 or 2 End Wire Preparation
1	Black	23-30-0830	----	Component of the motor assembly.
2	Red	23-30-0830	----	Component of the motor assembly.
3	Black	23-66-4000	----	Component of the switch assembly.
4	Black	23-66-4000	----	Component of the switch assembly.
6	White	23-66-4000	----	Component of the switch assembly.
7	White	23-66-4000	----	Component of the switch assembly.
8	Red	23-66-4000	----	Component of the switch assembly.
9	Red	23-66-4000	----	Component of the switch assembly.
10	Yellow	23-66-4000	----	Component of the switch assembly.
11	Blue	23-66-4000	----	Component of the switch assembly.
12	Black	23-66-4000	----	Component of the switch assembly.
13	Sleeve	23-66-4000	----	Component of the switch assembly / fuel gauge LED.

