



# SERVICE PARTS LIST

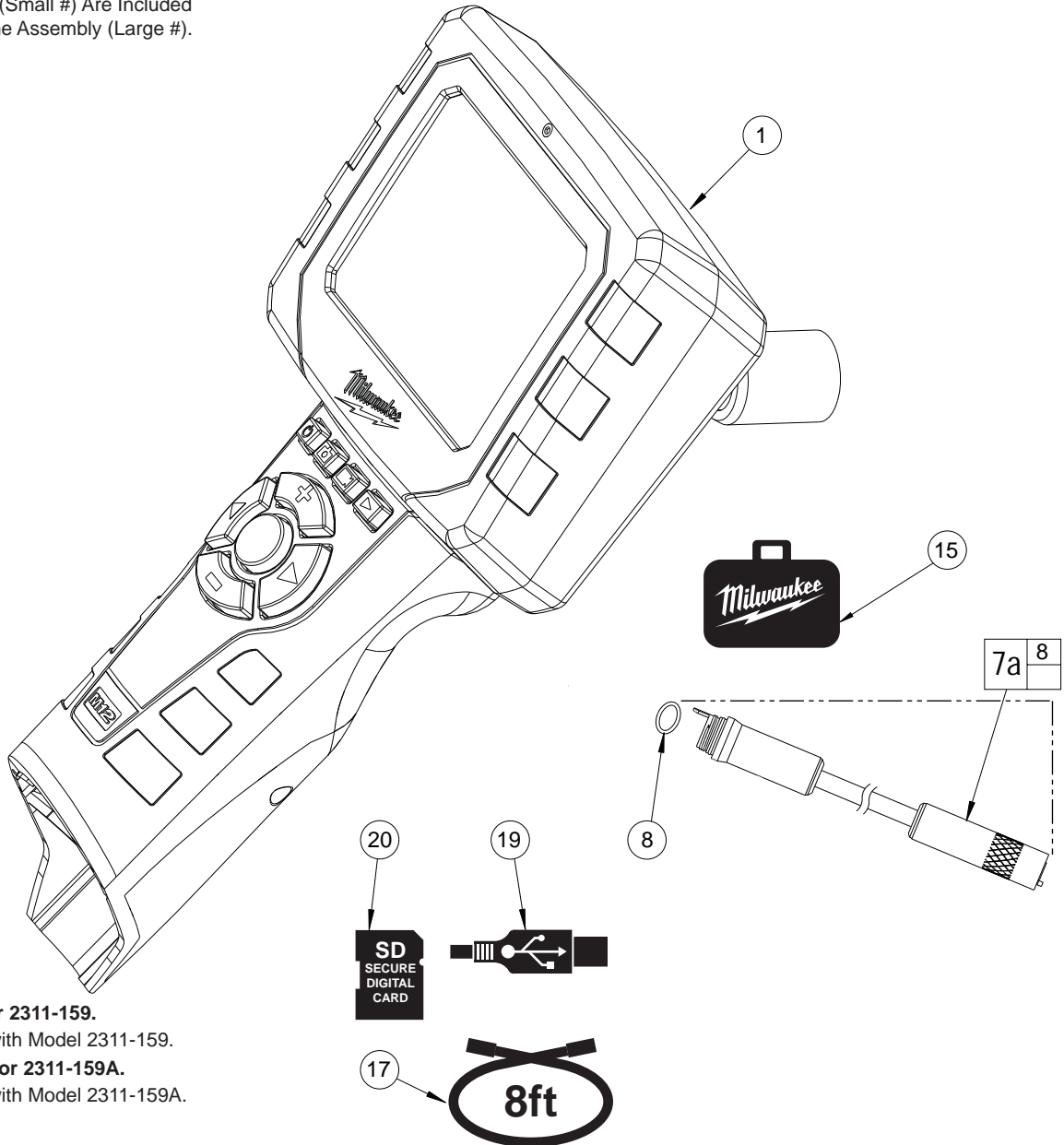
BULLETIN NO.  
55-07-2320

SPECIFY CATALOG NO. AND SERIAL NO. WHEN ORDERING PARTS		REVISED BULLETIN	DATE
<b>12 VOLT M-SPECTOR 2 (Digital Inspection Camera)</b>			Feb. 2012
CATALOG NO.	<b>2311-059</b> <b>2311-059A</b>	SERIAL NUMBER	<b>E18A</b>
WIRING INSTRUCTION			

**EXAMPLE:**  

00	0
----	---

 Component Parts (Small #) Are Included When Ordering The Assembly (Large #).



**2311-059: Base model for 2311-159.**

\* Standard equipment with Model 2311-159.

**2311-059A: Base model for 2311-159A.**

\* Standard equipment with Model 2311-159A.

FIG.	PART NO.	DESCRIPTION OF PART	NO. REQ.
1	14-46-2311	Inspection Camera	(1)
7a	48-53-0125	Digital Camera Cable *	(1)
8	34-40-0195	O-Ring	(1)
15	42-55-2311	Carrying Case	(1)
16	-----	Service Nameplate (Not Shown)	(1)
17	48-53-0140	Accessory 8' Extension Cable	(1)
19	42-44-0200	USB (Universal Serial Bus) Cable	(1)
20	22-74-3000	SD (Secure Digital) Card	(1)