



# SERVICE PARTS LIST

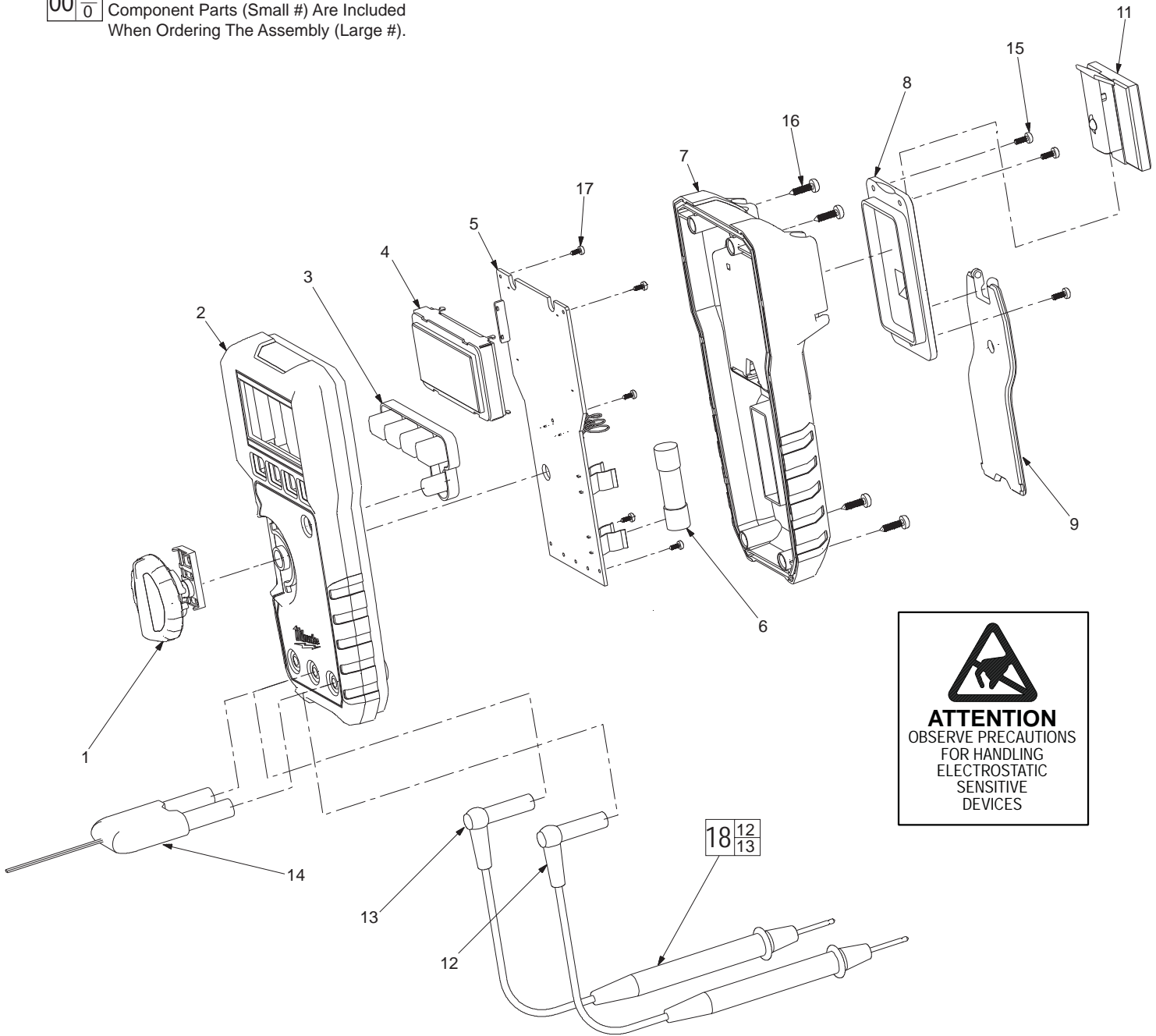
**BULLETIN NO.**  
**54-07-2200**

| SPECIFY CATALOG NO. AND SERIAL NO. WHEN ORDERING PARTS |                | REVISED BULLETIN     | DATE        |
|--|----------------|----------------------|-------------|
| <b>DIGITAL MULTIMETER</b>                              |                |                      | Apr. 2010   |
| <b>CATALOG NO.</b>                                     | <b>2217-20</b> | <b>SERIAL NUMBER</b> | <b>B83A</b> |
| WIRING INSTRUCTION                                     |                |                      |             |

**EXAMPLE:**  

|    |   |
|----|---|
| 00 | 0 |
|----|---|

 Component Parts (Small #) Are Included  
 When Ordering The Assembly (Large #).



| FIG. | PART NO.   | DESCRIPTION OF PART              | NO. REQ. |
|------|------------|----------------------------------|----------|
| 1    | 23-66-0545 | Rotary Switch                    | (1)      |
| 2    | 31-50-0380 | Top Case                         | (1)      |
| 3    | 42-42-0900 | Rubber Keypad                    | (1)      |
| 4    | 44-06-0070 | LCD Module                       | (1)      |
| 5    | 22-06-0140 | Main PCA                         | (1)      |
| 6    | 22-89-0300 | Fuse                             | (1)      |
| 7    | 31-50-0385 | Bottom Case                      | (1)      |
| 8    | 31-21-0035 | Battery Door                     | (1)      |
| 9    | 31-70-0155 | Bale, DMM Stand                  | (1)      |
| 11   | 49-77-3001 | Magnet                           | (1)      |
| 12   | -----      | Red Test Lead                    | (1)      |
| 13   | -----      | Black Test Lead                  | (1)      |
| 14   | 49-77-2001 | K-Type Thermocouple              | (1)      |
| 15   | 05-81-0260 | Battery Door Screw               | (3)      |
| 16   | 05-81-0265 | Bottom Case Screw                | (4)      |
| 17   | 05-81-0370 | PCA Screw                        | (5)      |
| 18   | 49-77-1001 | Test Lead Set (Contains 12 & 13) | (1)      |

**MILWAUKEE ELECTRIC TOOL CORPORATION**  
 13135 W. LISBON RD., BROOKFIELD, WI 53005  
 Drwg. 4