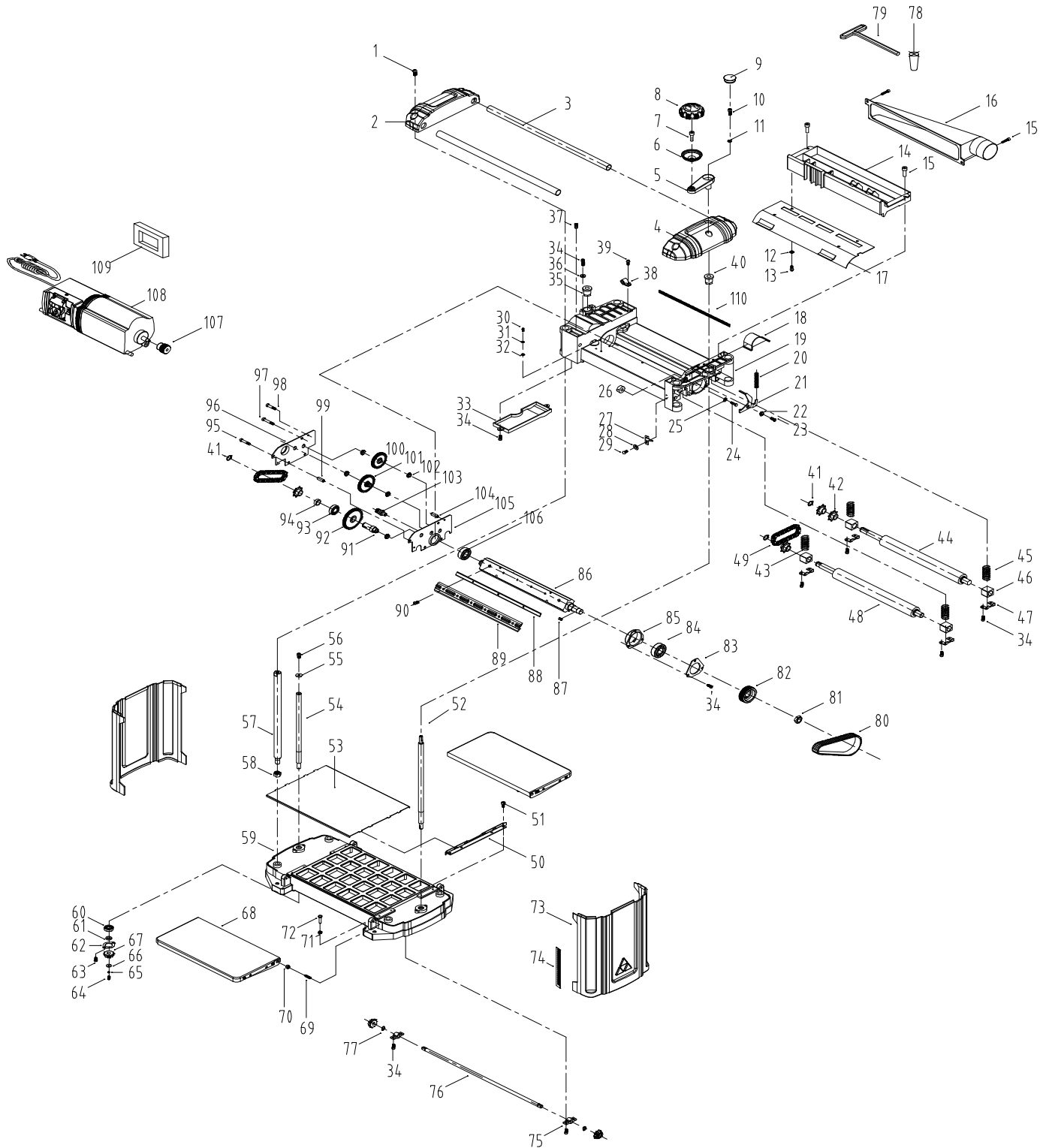




POWER EQUIPMENT CORPORATION

P-16  
PART # DPEC002725  
DATE: 1-31-2013  
REVISED: 5-16-2014

### 22-555 13 - INCH SURFACE PLANER



## REPLACEMENT PARTS

ITEM	PART NO.	DESCRIPTION	QTY	ITEM	PART NO.	DESCRIPTION	QTY
1	DPEC002511	PanHead Screw M6 x 16L	4	37	DPEC002547	Set Screw M5 X 10L	1
2	DPEC002512	Left Cap	1	38	DPEC002548	Cord Clamp	1
3	DPEC002513	Roller	2	39	DPEC002549	Cross Hd Scr M5 X 10L	1
4	DPEC002514	Right Cap	1	40	DPEC002550	Elevating nut (R.H.)	1
5	DPEC002515	Crank arm	1	41	DPEC002551	Exterior Ret Ring dia 5	3
6	DPEC002516	Handle	1	42	DPEC002552	Sprocket	4
7	DPEC002517	Handle Shaft	1	43	DPEC002553	Infeed Spring	2
8	DPEC002518	Handle Cap	1	44	DPEC002554	Outfeed Roller	1
9	DPEC002519	Plug	1	45	DPEC002555	Outfeed Spring	2
10	DPEC002520	Socket Hd Screw M5 X 16L	1	46	DPEC002556	Bearing Block	4
11	DPEC002521	Washer M5	1	47	DPEC002557	Retainer	4
12	DPEC002522	Washer M5	4	48	DPEC002558	Infeed Roller	1
13	DPEC002523	Self Tap Scr ST4.8 X 10L	4	49	DPEC002559	Chain	2
14	DPEC002524	Dust Hood	1	50	DPEC002720	Guide	2
15	DPEC002525	Socket Hd Scr M6 X 15L	4	51	DPEC002561	Socket Hd Scr M5 X 8L	8
16	DPEC002526	Dust adapter	1	52	DPEC002562	Elevating Screw (R.H.)	1
17	DPEC002527	Dust Chute	1	53	DPEC002563	Platen	1
18	DPEC002528	Belt Guard	1	54	DPEC002564	Elevating Screw (L.H.)	1
19	DPEC002529	Carriage Frame	1	55	DPEC002565	Flat washer M6	1
20	DPEC002530	Spring	1	56	DPEC002566	Socket Hd Scr M6 X 10	1
21	DPEC002531	Cutterhead Lock plate	1	57	DPEC002567	Column	3
22	DPEC002532	Spacer	1	58	DPEC002568	Hex Nut M12	4
23	DPEC002533	Socket Head Scr M6 X 20L	1	59	DPEC002569	Base	1
24	DPEC002534	Hex Bolt M8 X 20L	1	60	DPEC002570	Bearing	2
25	DPEC002535	Flat washer M8	1	61	DPEC002571	Spacer	2
26	DPEC002536	Spacer	1	62	DPEC002572	Retainer	2
27	DPEC002537	Pointer	1	63	DPEC002573	Pan Head Screw M5 X 12L	4
28	DPEC002538	Flat washer M3	2	64	DPEC002574	Socket Hd Scr M4 X 12L	2
29	DPEC002539	Cross Hd Scr M3 X 6L	2	65	DPEC002575	Spring Washer M4	2
30	DPEC002540	Cross Hd Scr M3 X 6	2	66	DPEC002576	Flat washer	2
31	DPEC002541	Spring Washer M4	2	67	DPEC002577	Gear	4
32	DPEC002542	Serrated Washer dia 5.3	2	68	DPEC002578	Extend table ass.	2
33	DPEC002543	Gearbox Cover	1	69	DPEC002579	Adjust Screw M10 X P1.5	4
34	DPEC002544	Socket Hd Scr M5 X 12L	20	70	DPEC002580	Hex nut M10	4
35	DPEC002545	Elevating nut (L.H.)	1	71	DPEC002581	Hex nut M6	4
36	DPEC002546	Flat washer M5	4	72	DPEC002582	Hex Bolt M6 X 20	4

## REPLACEMENT PARTS

ITEM	PART NO.	DESCRIPTION	QTY	ITEM	PART NO.	DESCRIPTION	QTY
73	DPEC002583	Side Cover	2	109	DPEC002620	Foam Gasket	1
74	DPEC002249	Scale	1	110	DPEC002621	Foam Gasket	1
75	DPEC002585	Support	2	113	DPEC002254	Logo Label	1
76	DPEC002586	Shaft	1	114	DPEC002256	Warning Label	1
77	DPEC002587	Extend ret ring dia 10	2	115	DPEC002723	Spec Label	1
78	DPEC002588	Magnet	2	116	DPEC002251	Label	2
79	DPEC002590	Hex wrench	1	117	DPEC002250	Blade Changing Label	1
80	DPEC002591	Belt	1	118	DPEC002250	Handle Direction Label	1
81	DPEC002592	Hex nut M16 X P2.0	1	119	DPEC002257	Warning Label	2
82	DPEC002593	Pulley	1				
83	DPEC002594	Bearing Retainer	1				
84	DPEC002595	Bearing	1				
85	DPEC002596	Bearing Seat	1				
86	DPEC002597	Cutterhead	1				
87	DPEC002598	Key	1				
88	22-549	Blade Set	Ref				
89	DPEC002722	Gib	2				
90	DPEC002601	Pan head Screw M6 X 16L	12				
91	DPEC002602	Shaft	1				
92	DPEC002603	Gear	1				
93	DPEC002604	Bearing	1				
94	DPEC002605	Spacer	1				
95	DPEC002606	Socket Hd Scr M5 X 30L	1				
96	DPEC002607	Outside Cover	1				
97	DPEC002608	Socket Hd Scr M5 X 35L	3				
98	DPEC002609	Socket Hd Scr M5 X 27L	2				
99	DPEC002610	Spacer B	4				
100	DPEC002611	Gear	1				
101	DPEC002612	Gear	1				
102	DPEC002613	Bushing	5				
103	DPEC002614	Pinion	1				
104	DPEC002615	Spacer A	2				
105	DPEC002616	Inside Cover	1				
106	DPEC002617	Bearing	1				
107	DPEC002618	Motor Pulley	1				
108	DPEC002619	Motor	1				