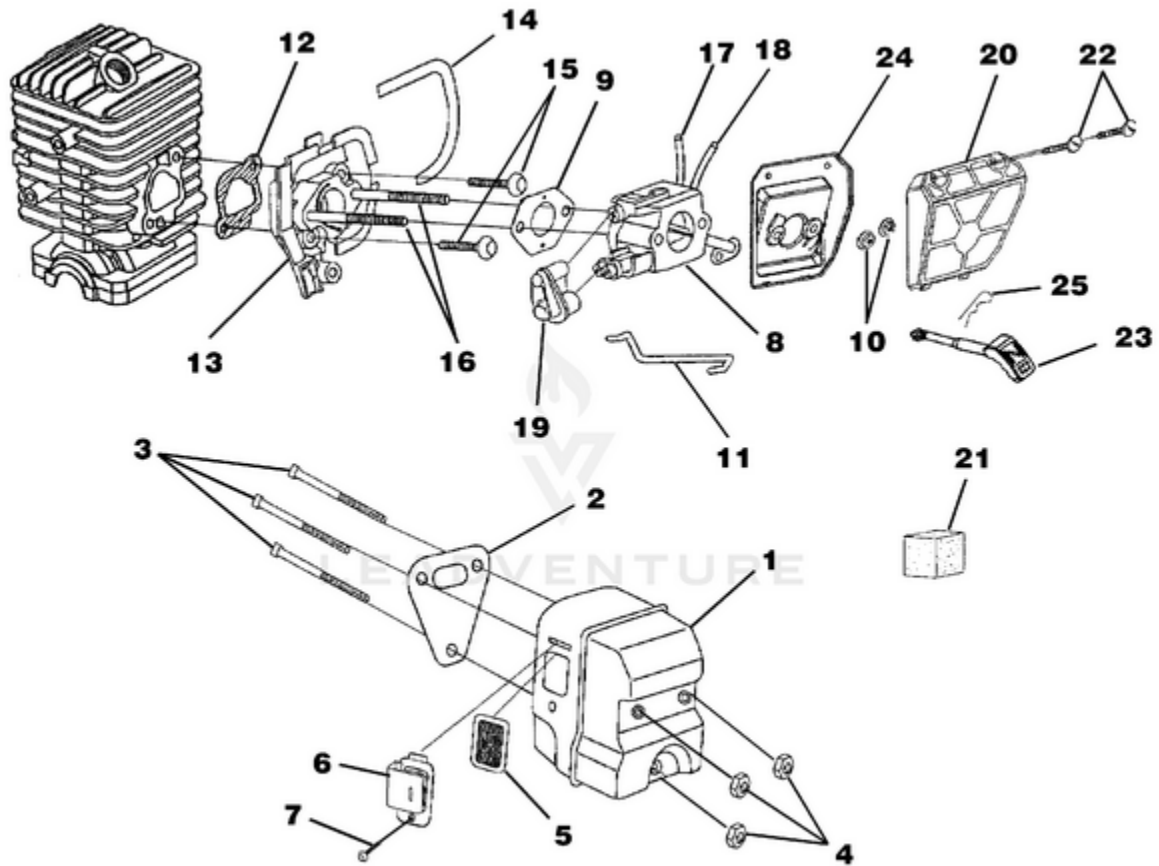


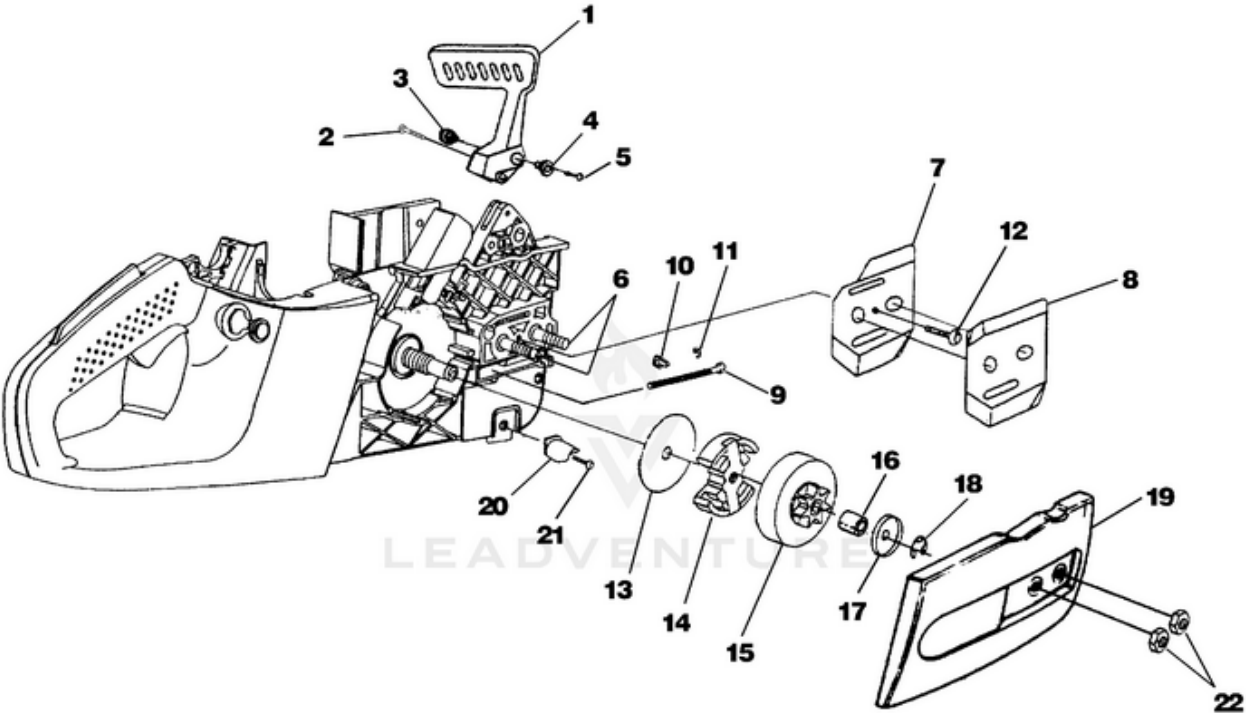
20 Chain Saw UT-10782-A 10782-A-UT 20 Chain Saw UT-10782-A 20 Chain Saw - Carburetor - Muffler -
Air Filter



Rendered by LeadVenture, Inc.

| Ref # | Part # | Description | Qty |
|-------|---------|---|-----|
| 1 | UP06752 | Muffler Kit | 1 |
| 2 | UP04183 | Muffler Gasket | 1 |
| 3 | UP04049 | Screw-Square Hd. | 3 |
| 4 | UP04059 | Nut-Locking Hex (10-32) | 3 |
| 5 | UP04203 | Screen, Spark | 1 |
| 6 | UP04204 | Deflector, Muffler | 1 |
| 7 | UP04244 | Screw (8-32 x .312) | 1 |
| 8 | A09159 | Carburetor Assembly | 1 |
| 9 | UP04094 | Carburetor Gasket | 1 |
| 10 | UP04217 | Flange Nut (10-24) | 2 |
| 11 | UP04230 | Throttle Wire | 1 |
| 12 | UP04184 | Gasket, Heat Dam | 1 |
| 13 | UP04173 | Heat Dam | 1 |
| 14 | UP04191 | Seal, Heat Dam | 1 |
| 15 | UP04084 | Screw, Truss Hd. Taptite (10-24 x 7/8") | 2 |
| 16 | UP04189 | Screw, Carburetor | 2 |
| 17 | UP04211 | Fuel Line (Tank to Carburetor 8 1/2") | 1 |
| 18 | UP04209 | Fuel Line (Carburetor to Purge Bulb 4") | 1 |
| 19 | UP04171 | Carburetor Grommet | 1 |
| | UP06753 | Air Filter Kit | 1 |
| 20 | UP04533 | Air Filter Cover | 1 |
| 21 | UP04208 | Pre Filter (In engine housing) | 1 |
| 22 | UP04235 | Screw-Slotted Pan Hd. (8-16 x 5/8") | 2 |
| 23 | UP04213 | Rod, Choke | 1 |
| 24 | UP04178 | Air Filter Plate | 1 |
| 25 | UP04227 | Spring Clip (Choke Rod) | 1 |

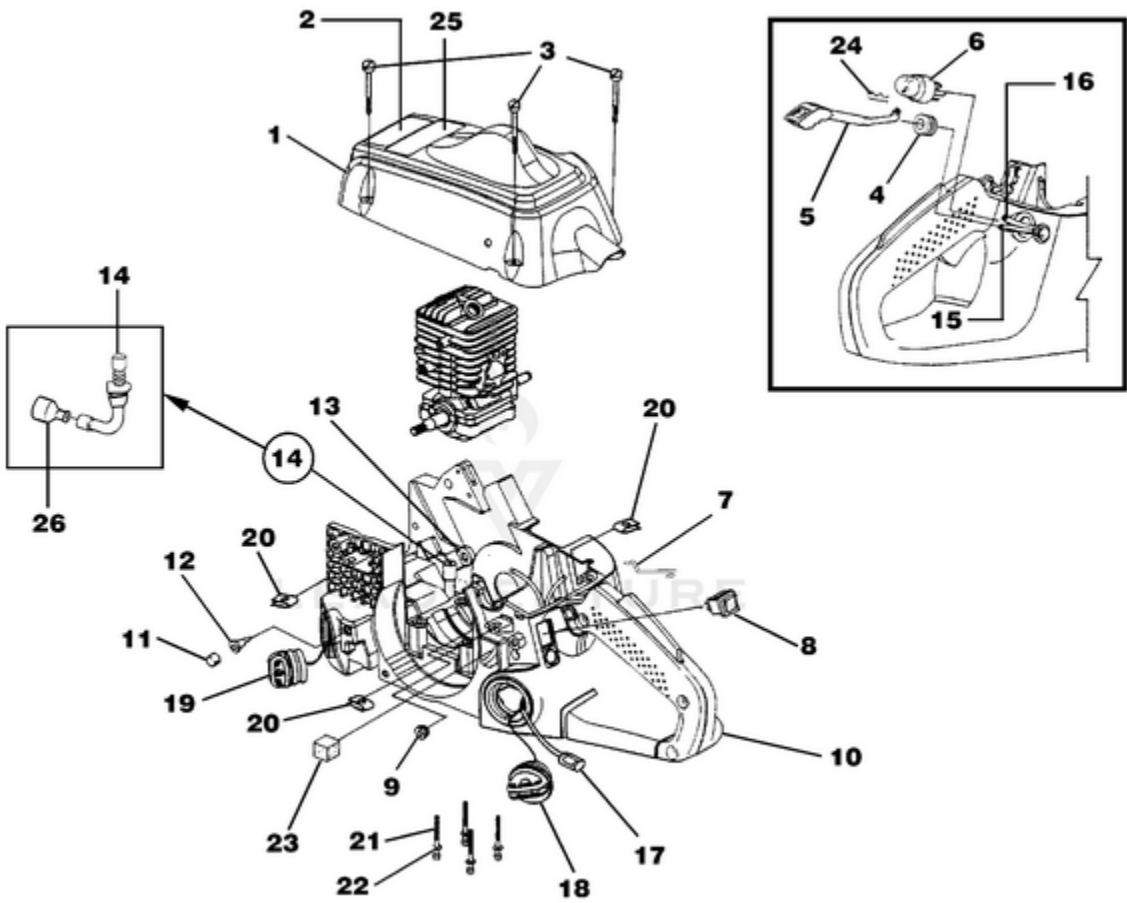
20 Chain Saw UT-10782-A 10782-A-UT 20 Chain Saw UT-10782-A 20 Chain Saw - Clutch - Hand Guard - Drive Case
Cover



Rendered by LeadVenture, Inc.

| Ref # | Part # | Description | Qty |
|-------|---------|--|-----|
| 1 | UP06568 | Hand Guard Kit | 1 |
| 2 | UP03898 | Screw-Thd. form. (#8-14 x .625) | 1 |
| 3 | UP04202 | Pivot, L.H. | 1 |
| 4 | UP04201 | Pivot, R.H. | 1 |
| 5 | UP04240 | Screw, Hex Socket Hd. (8-32 x 5/8") | 1 |
| 6 | UP04180 | Guide Bar Bolt | 2 |
| | UP06966 | Guide Bar Adjusting Kit | 1 |
| 7 | UP04206 | Plate, Guide Bar | 1 |
| 8 | UP04085 | Plate, Guide Bar | 1 |
| 9 | UP04187 | Screw, Guide Bar Adjusting | 1 |
| 10 | UP04186 | Pin, Guide Bar Adjusting | 1 |
| 11 | UP04056 | Ring, Retaining | 1 |
| 12 | UP04082 | Screw, Thread Form., Plastite (6-19 x 1/2") | 1 |
| 13 | UP04182 | Thrust Washer | 1 |
| 14 | UP06727 | Clutch & Hardware | 1 |
| 15 | UP06967 | Sprocket, Drum (3/8 Pitch) | 1 |
| 16 | UP04175 | Bearing, Needle | 1 |
| 17 | UP04179 | Washer, Cupped | 1 |
| 18 | UP04228 | Ring, Retaining | 1 |
| 19 | UP06975 | Drive Case Cover | 1 |
| 20 | UP04088 | Stop, Chain | 1 |
| 21 | UP03900 | Screw, Thread Form., Plastite (10-14 x 3/4") | 1 |
| 22 | UP04058 | Nut, Hex | 2 |

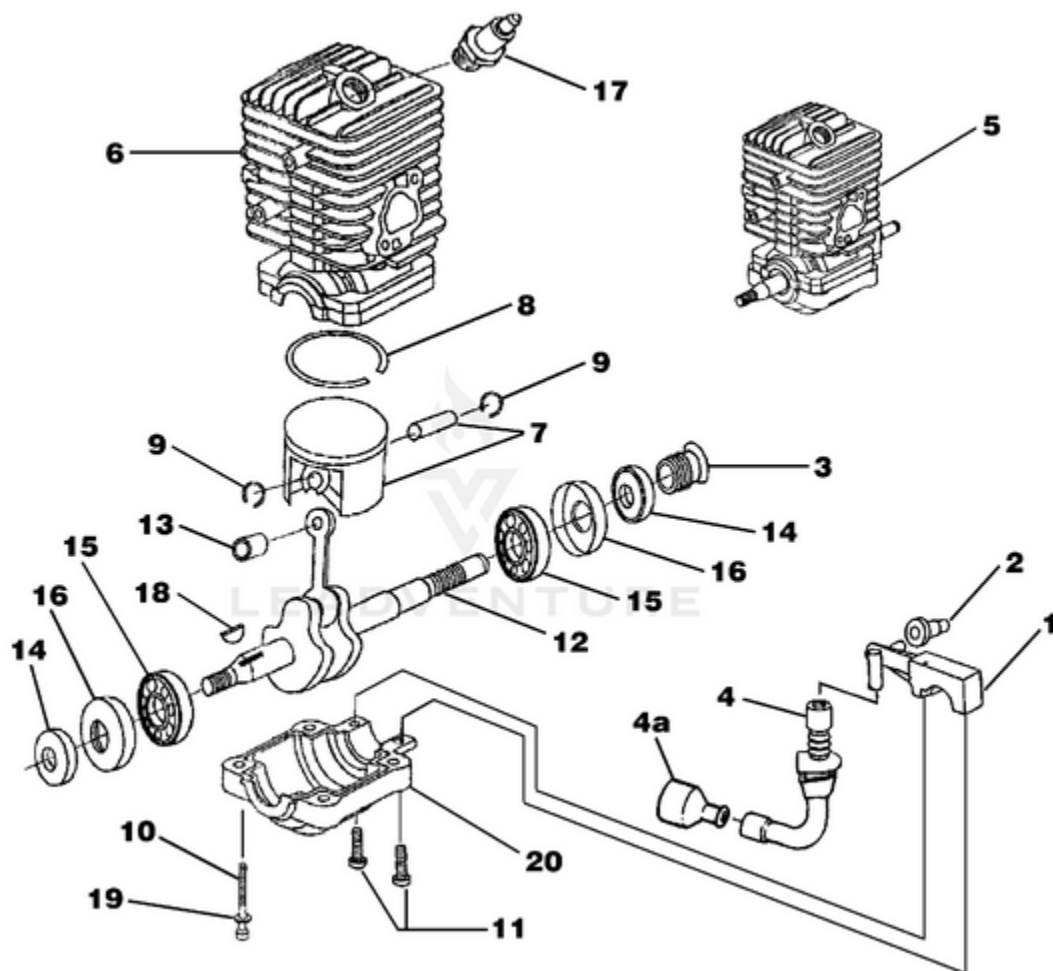
20 Chain Saw UT-10782-A 10782-A-UT 20 Chain Saw UT-10782-A 20 Chain Saw - Engine Housing - Fuel Tank - Oil Tank



Rendered by LeadVenture, Inc.

| Ref # | Part # | Description | Qty |
|--------------|---------------|---------------------------------------|------------|
| 1 | A09162 | Cylinder Cover Kit | 1 |
| 2 | UP04212 | Safety Decal | 1 |
| 3 | UP04219 | Screw-Slotted Pan Hd. | 3 |
| 4 | UP04052 | Grommet | 1 |
| 5 | UP04213 | Rod, Choke | 1 |
| 6 | UP04033 | Bulb, Air Purge | 1 |
| 7 | UP04230 | Throttle Wire | 1 |
| 8 | UP04197 | Switch, Rocker | 1 |
| 9 | UP04215 | Grommet-Split | 1 |
| 10 | UP06751 | Engine Housing | 1 |
| 11 | UP04205 | Element, Filter (Bronze) | 2 |
| 12 | UP04045 | Duck Bill Valve | 2 |
| 13 | UP04185 | Oil Outlet Grommet | 1 |
| 14 | UP04048 | Oil Intake Tube | 1 |
| 15 | UP04210 | Rubber Tubing (5 1/2") | 1 |
| 16 | UP04211 | Rubber Tubing (8 1/2") | 1 |
| 17 | UP03871 | Fuel Filter | 1 |
| 18 | DA07590 | Fuel Cap w/ Retainer | 1 |
| 19 | DA07591 | Oil Cap w/ Retainer | 1 |
| | UP04054 | Oil Filter | 1 |
| | UP04180 | Guide Bar Bolt | 2 |
| 20 | UP04221 | Speed Nut ("U-Type") | 3 |
| 21 | UP04083 | Screw, Cap-Socket Hd. (10-24 x 2") | 4 |
| 22 | UP04087 | Washer | 4 |
| 23 | UP04208 | Pre Filter | 1 |
| 24 | UP04227 | Spring Clip (Choke Rod) | 1 |
| 25 | UP04225 | Kickback-Decal | 1 |
| 26 | UP04054 | Oil Filter | 1 |

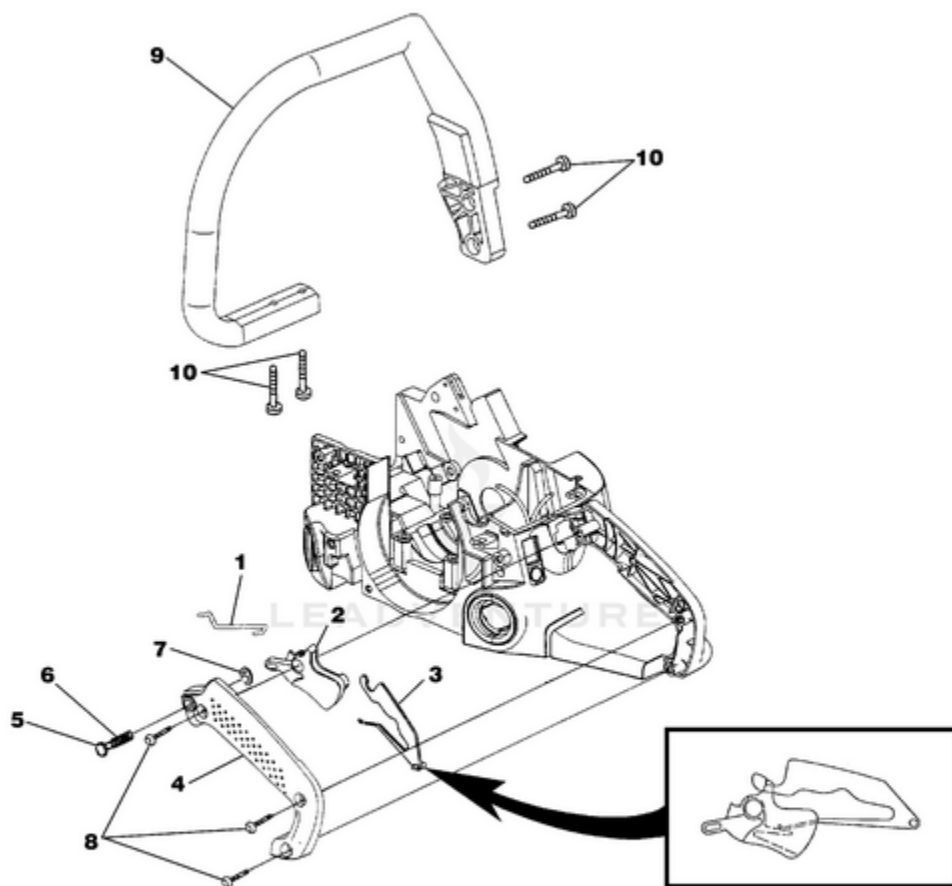
20 Chain Saw UT-10782-A 10782-A-UT 20 Chain Saw UT-10782-A 20 Chain Saw - Engine Internal - Oil
Pump



Rendered by LeadVenture, Inc.

| Ref # | Part # | Description | Qty |
|--------------|---------------|---|------------|
| 1 | UP06602 | Oil Pump Kit | 1 |
| 2 | UP04185 | Grommet, Oil Outlet | 1 |
| 3 | UP04188 | Left Hand Worm | 1 |
| 4 | UP04048 | Tube, Oil Intake | 1 |
| 4A | UP04054 | Oil Filter | 1 |
| 5 | UP03696 | Short Block, Complete (33cc) | 1 |
| | UP03853 | Short Block, Complete (38cc) | 1 |
| 6 | A08666 | Cylinder Kit (33cc) | 1 |
| | A08667 | Cylinder Kit (38cc) | 1 |
| | UP04183 | Gasket, Muffler | 1 |
| | UP04184 | Gasket, Heat Dam | 1 |
| | UP04094 | Gasket, Carburetor | 1 |
| 7 | UP06971 | Piston & Pin (33cc) | 1 |
| 8 | UP04177 | Piston Ring | 1 |
| 9 | UP04051 | Ring, Retaining | 2 |
| 7 | UP06972 | Piston & Pin (38cc) | 1 |
| 8 | UP04190 | Piston Ring | 1 |
| 9 | UP04051 | Ring, Retaining | 2 |
| 10 | UP04083 | Screw, Cap-Socket Hd. (10-24 x 2") | 4 |
| 11 | UP03898 | Screw, Pan Hd., Plastite (8-16 x 5/8") | 2 |
| 12 | UP03587 | Crankshaft & Rod Assembly | 1 |
| 13 | UP04174 | Bearing, Needle | 1 |
| 14 | UP04047 | Shaft Seal | 2 |
| 15 | UP04176 | Bearing & Rubber Case | 2 |
| 16 | UP04046 | Rubber Case | 1 |
| 17 | UP04093 | Spark Plug | 1 |
| 18 | UP03874 | Woodruff Key | 1 |
| 19 | UP04087 | Washer | 4 |
| 20 | UP04172 | Lower Crankcase | 1 |

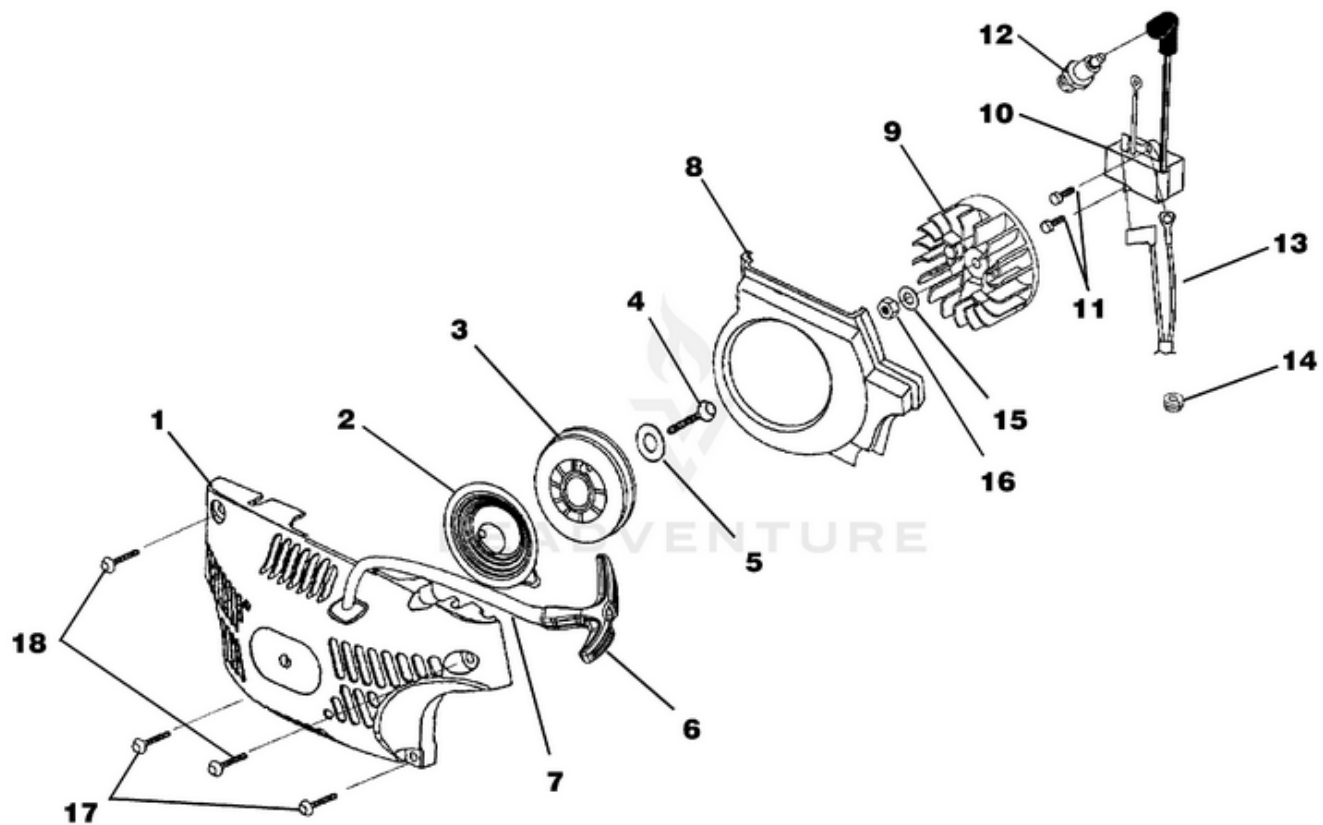
20 Chain Saw UT-10782-A 10782-A-UT 20 Chain Saw UT-10782-A 20 Chain Saw - Handles



Rendered by LeadVenture, Inc.

| Ref # | Part # | Description | Qty |
|--------------|---------------|---|------------|
| 1 | UP04230 | Throttle Wire | 1 |
| 2 | UP04229 | Trigger, Throttle | 1 |
| 3 | UP04196 | Throttle Lock Out | 1 |
| 4 | UP06736 | Handle Cover Kit | 1 |
| 5 | UP04243 | Throttle Lock Pin | 1 |
| 6 | UP04226 | Spring, Compression | 1 |
| 7 | UP04050 | Ring, Retainer | 1 |
| 8 | UP03900 | Screw, Thread Form., Plastite (10-14 x 3/4") | 3 |
| 9 | UP06974 | Front Handle Kit | 1 |
| 10 | UP03895 | Screw, Plastite (10-14 x 5/8") | 4 |

20 Chain Saw UT-10782-A 10782-A-UT 20 Chain Saw UT-10782-A 20 Chain Saw - Starter - Ignition



Rendered by LeadVenture, Inc.

| Ref # | Part # | Description | Qty |
|--------------|---------------|--|------------|
| 1 | UP06749 | Starter Kit | 1 |
| 2 | UP04092 | Spring & Container | 1 |
| 3 | UP05460 | Pulley, Starter | 1 |
| 4 | UP04237 | Screw, Thread Form, Plastite (10-14 x 5/8") | 1 |
| 5 | UP04089 | Washer, Retaining | 1 |
| 6 | UP04216 | Grip, Starter | 1 |
| 7 | UP03911 | Rope, Starter 46" | 1 |
| 8 | UP04192 | Baffle, Fan Housing | 1 |
| 9 | UP04242 | Rotor & Starter Pawl | 1 |
| 10 | A08676A | Ignition Kit | 1 |
| | UP05851 | Ignition Kit | 1 |
| 11 | UP04086 | Screw, Thread Form (8-32 x 5/8") | 2 |
| 12 | UP04093 | Spark Plug | 1 |
| 13 | UP04222 | Ignition Switch Harness | 1 |
| 14 | UP04215 | Grommet, Wire Harness (Split) | 1 |
| 15 | UP04241 | Washer, Flat | 1 |
| 16 | UP04081 | Nut, Jam | 1 |
| 17 | UP04236 | Screw, Truss Hd., Plastite (10-14 x 7/8") | 2 |
| 18 | UP04237 | Screw, Truss Hd., Plastite (10-14 x 5/8") | 2 |

No
Diagram
Available

LEADVENTURE
Parts List
Only

| Ref # | Part # | Description | Qty |
|--------------|---------------|----------------------------------|------------|
| | PT12371MD | Guide Bar 12" (Power Tip) (3/8") | |
| | H1N7245AH | Chain 12" (3/8") | |
| | PT14371MD | Guide Bar 14" (Power Tip) (3/8") | |
| | H1N7252AH | Chain 14" (3/8") | |
| | PT16371MD | Guide Bar 16" (Power Tip) (3/8") | |
| | H1N7256AH | Chain 16" (3/8") | |
| | PT18371MD | Guide Bar 18" (Power Tip) (3/8") | |
| | H1N7262AH | Chain 18" (3/8") | |
| | PS24823 | Sealant Silicon | |
| | UP06561 | Rubber tubing (10') | |
| | 09207 | Wrench - Combination | |
| | 18416 | Digital Tachometer | |
| | 18453 | Grease, Multi-purpose | |
| | 94194 | Compression Tester | |
| | UP07160 | Bit, Torx T27 | |
| | UP04562 | Carry Case | |
| | UP06732 | Bumper Spike Kit | |