



SERVICE PARTS LIST

BUL. 54-12-3040

3/4" ELECTRIC DRILL

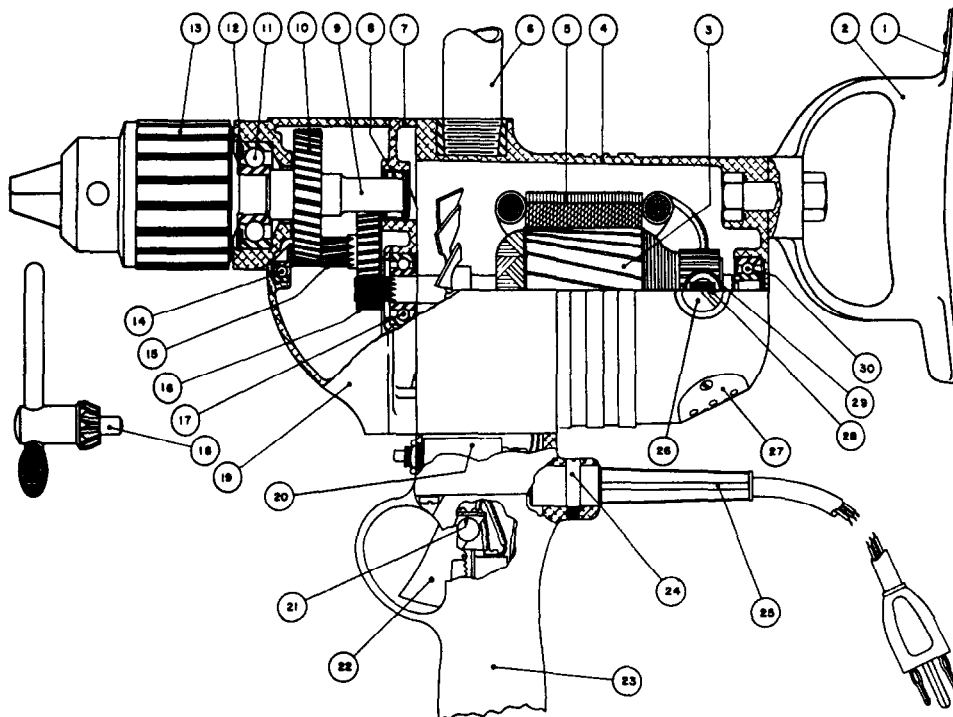
REVISED BUL 6125-2 DATE FEB. '68

MODEL NO. E-349

Starting Serial No. **125-1005**

WIRING INSTR.

Both Model and Serial No. must be furnished to obtain correct parts.



ILLUSTRATED PARTS

FIG.	PART NO.	DESCRIPTION OF PART	FIG.	PART NO.	DESCRIPTION OF PART
1	88D1-6	Spade Handle Key Clip	16	89D-14	Intermediate Gear
2	88D1-3A	Spade Handle	17	WC8011	Armature Ball Bearing
3	L34-600	Armature Assembly	18	4CKJ	Chuck Key
4	23D-1	Motor Housing	19	2D-3	Gear Case
5	9U-700	Field Assembly	20	MP-600	Circuit Breaker
6	88D-43	Pipe Handle	21	88D-23A	Switch Bracket
7	2D-2	Diaphragm	22	CH8636K1	Switch
8	MH-1081	Spindle Needle Bearing	23	TH1-1A	Switch Handle
9	3D-8A	Spindle	24	14DS1-1	Cord Retaining Screw (2)
10	TM-11	Spindle Gear	25	16G-10SR2	Cord Set
11	ND8603	Spindle Ball Bearing	26	88D-400	Brush Retaining Screw Assy. (2)
12	RR-185	Spindle Ball Brg. Retaining Ring	27	23D-41	Air Intake Cover Plate
13	3/4	Chuck (5/8-16 Thread)	28	88D-370	Carbon Brush Assembly (2)
14	ND39	Inter. Shaft Ball Bearing	29	88D-320	Brush Holder Assembly (2)
15	TM-13	Intermediate Shaft	30	WC8500	Armature Ball Brg.

MISCELLANEOUS PARTS NOT SHOWN

SIZE OR PART NO.	DESCRIPTION OF PART	SIZE OR PART NO.	DESCRIPTION OF PART
MH681	Inter. Shaft Needle Bearing	1/4-20x1 Fil. Hd.	Gear Case Screws (2)
349-1	Name Plate	1/4-20x1 1/4 Fil. Hd.	Gear Case Screws (2)
1/2-13x1 1/2 Hex. Hd.	Spade Handle Bolt	8-32x2 1/2 Rd. Hd.	Field Screws (2)
1/2-13	Spade Handle Jam Nut	1/4-20x1 1/2 Fil. Hd.	Switch Handle Screws (4)
4x5/16 Driv-In	Spade Handle Key Clip Screws	1/4-20x 1/2 Hd'less	Brush Holder Set Scs. (2)
6x32x1/4 Rd. Hd.	Switch Mounting Screws (2)	#8	Kantlink Lock Washer (2)
6x32x1/4 Fil. Hd.	Switch Bracket Screws (2)	#14	Kantlink Lock Washers (10)
4x5/16 Driv-In	Name Plate Screws (2)	#2	Woodruff Keys
6x1/4 P.K.	Air Intake Plate Screws (2)	#61	Woodruff Key
88R1-4	Fiber Insulator		

Numbers in brackets indicate number required.