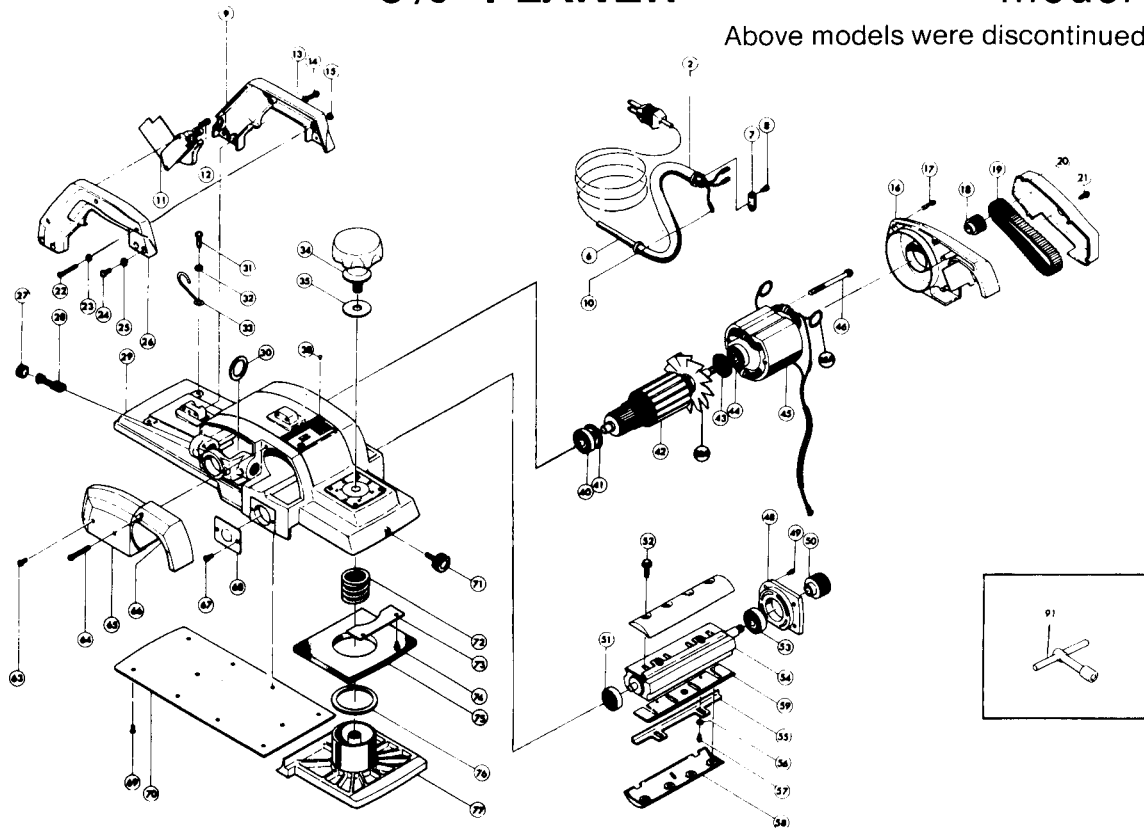


Above models were discontinued in 1976



| ITEM NO. | PART NO. | NO. USED | DESCRIPTION | ITEM NO. | PART NO. | NO. USED | DESCRIPTION |
|----------|----------|----------|--|----------|----------|----------|-------------------------------------|
| 2 | 682507-4 | 1 | CORD GUARD | 43 | 213102-5 | 1 | DUST SEAL |
| 6 | 664322-8 | 1 | CORD WITH PLUG | 44 | 211106-1 | 1 | BALL BEARING 6201LLB |
| 7 | 687000-3 | 1 | STRAIN RELIEF | 45 | 623022-9 | 1 | FIELD with Garter Spring (654020-2) |
| 8 | 911131-9 | 2 | SCREW M4x18 | 45A | 654020-2 | 1 | GARTER SPRING |
| 9 | 411162-3 | 1 | HANDLE (L) | 46 | 911291-7 | 2 | FIELD SCREW M5x70 |
| 10 | 911821-4 | 1 | SCREW M4x8 | 48 | 312278-6 | 1 | DRUM HOUSING |
| 11 | 651007-5 | 1 | SWITCH | 49 | 911116-5 | 4 | SCREW M4x12 |
| 12 | 911101-8 | 2 | SCREW M4x6 | 50 | 222006-0 | 1 | V-PULLEY |
| 13 | 941102-2 | 4 | FLAT WASHER | 51 | 211067-5 | 1 | BALL BEARING 6200ZZ |
| 14 | 911211-1 | 4 | SCREW M5x12 | 52 | 251609-3 | 8 | HEX BOLT M6x17 |
| 15 | 931102-0 | 3 | HEX NUT | 53 | 211107-9 | 1 | BALL BEARING 6201ZZ |
| 16 | 156314-6 | 1 | BRACKET | 54 | 161017-9 | 1 | DRUM - 1804 |
| 17 | 911241-2 | 4 | SCREW M5x25 | | 161006-4 | 1 | DRUM - 1805 |
| 18 | 222007-8 | 1 | V-PULLEY | 55 | 342193-0 | 2 | ADJUST PLATE - 1804 |
| 19 | 225006-9 | 1 | POLY V-BELT | | 342165-5 | 2 | ADJUST PLATE - 1805 |
| 20 | 343072-5 | 1 | BELT COVER | 56 | 941051-3 | 4 | FLAT WASHER |
| 21 | 911206-4 | 1 | SCREW M5x10 | 57 | 251246-3 | 4 | SCREW M4x5 |
| 22 | 911156-3 | 3 | SCREW M4x30 | 58 | 345005-6 | 2 | DRUM PLATE - 1804 |
| 23 | 941052-1 | 3 | FLAT WASHER | | 345027-6 | 2 | DRUM PLATE - 1805 |
| 24 | 911211-1 | 4 | SCREW M5x12 | 59 | | 2 | PLANER BLADE, See Catalog |
| 25 | 941102-2 | 4 | FLAT WASHER | 63 | 911206-4 | 2 | SCREW M5x10 |
| 26 | 411161-5 | 1 | HANDLE (R) | 64 | 911166-0 | 1 | SCREW M4x40 |
| 27 | 643650-4 | 2 | BRUSH CAP | 65 | 284032-7 | 1 | REAR COVER |
| 28 | 643152-0 | 2 | CARBON BRUSH | 66 | 312279-4 | 1 | CHIP COVER |
| 29 | 156509-1 | 1 | FRAME - 1804 with Brush Holder (643653-8), Set Screw M5x8 (913206-0), Scale Plate (812073-9), Rivet 0.5 (953106-2) | 67 | 911206-4 | 2 | SCREW M5x10 |
| | 156508-3 | 1 | FRAME - 1805 | 68 | 285009-5 | 1 | BEARING COVER |
| 30 | 681002-1 | 2 | INSULATION WASHER | 69 | 912112-6 | 10 | SCREW M4x10 |
| 31 | 911321-4 | 1 | SCREW M6x16 | 70 | 341224-2 | 1 | BASE - 1804 |
| 32 | 941151-9 | 1 | FLAT WASHER | | 341223-4 | 1 | BASE - 1805 |
| 33 | 281001-9 | 1 | HOLDER | 71 | 251814-2 | 1 | SCREW M6x18 |
| 34 | 271202-7 | 1 | KNOB | 72 | 231058-0 | 1 | COMPRESSION SPRING |
| 35 | 253004-3 | 1 | FLAT WASHER | 73 | 341114-9 | 1 | GUIDE PLATE |
| 38 | 953106-2 | 4 | RIVET | 74 | 911106-8 | 2 | SCREW M4x8 |
| 40 | 211066-7 | 1 | BALL BEARING 6200LLB | 75 | 421059-8 | 1 | RUBBER PACKING - 1804 |
| 41 | 213051-6 | 1 | DUST SEAL | | 421056-4 | 1 | RUBBER PACKING - 1805 |
| 42 | 613022-7 | 1 | ARMATURE - 1804 Includes Item No. 40. | 76 | 253704-5 | 1 | FLAT WASHER |
| | 613142-7 | 1 | ARMATURE - 1805 41, 42A, 43, 44 | 77 | 312293-0 | 1 | FRONT BASE - 1804 |
| 42A | 241013-4 | 1 | FAN | | 312277-8 | 1 | FRONT BASE - 1805 |
| | | | | 91 | 782209-3 | 1 | SOCKET WRENCH |

