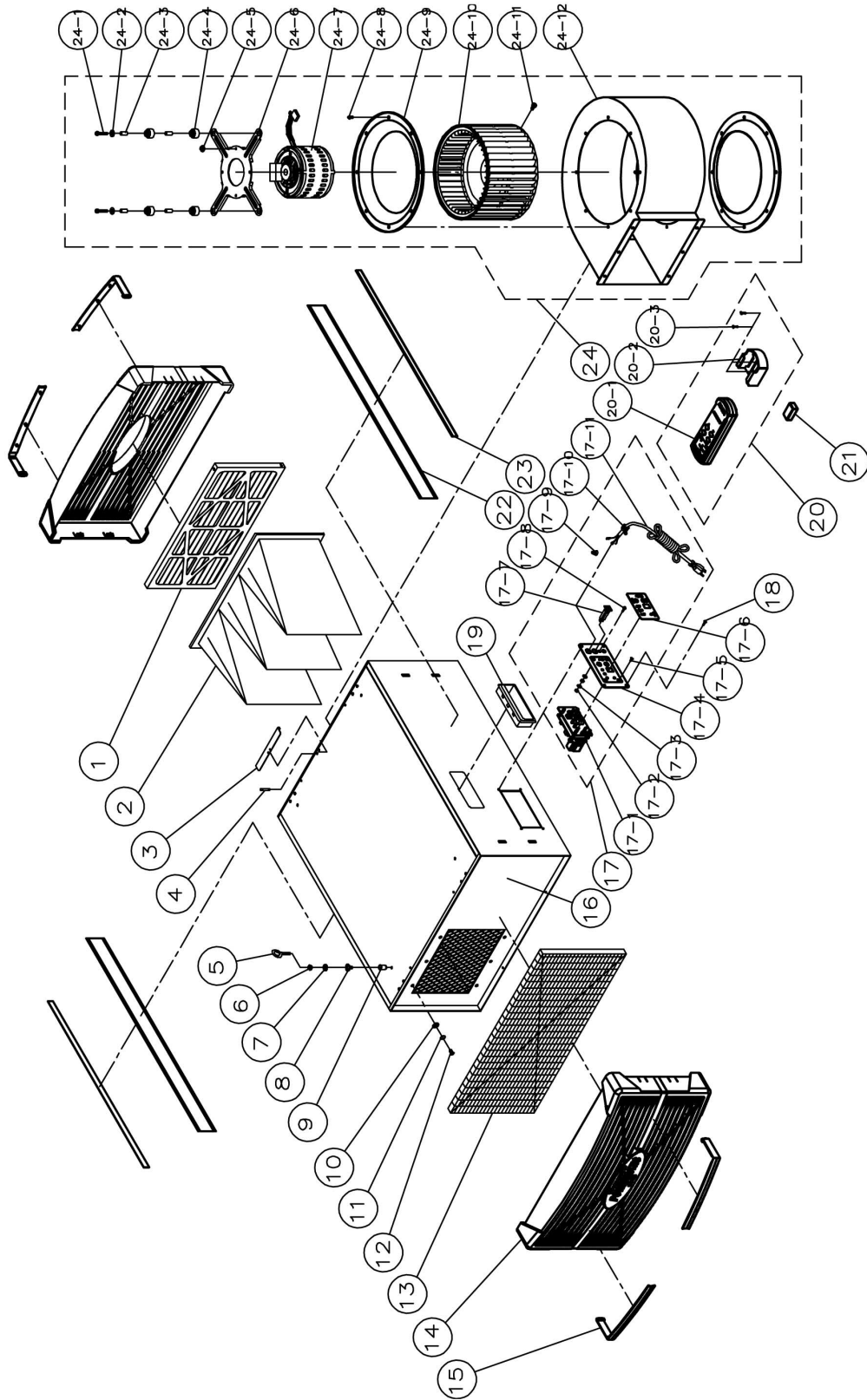


# Parts Breakdown for PM1200 Air Filtration System



## Parts List for PM1200 Air Filtration System

Index No.	Part No.	Description	Size	Qty
1	1791083	Outer Filter for PM1200		1
2	1791082	Inner Filter for PM1200		1
3	PM1200-03	Retaining Plate		1
4	PM1200-04	Rivet	NSS 4-4	2
5	PM1200-05	Eye Bolt *	M6	4
6	TS-1540041	Hex Nut *	M6	4
7	TS-1550041	Flat Washer *	M6	4
8	TS-1534032	Phillips Pan Head Machine Screw	M6x8	4
9	PM1200-09	Special Nut	M6	4
10	TS-1550041	Flat Washer	M6	6
11	TS-1551041	Lock Washer	M6	6
12	TS-1503031	Socket Head Cap Screw	M6x12	6
13	PM1200-13	Diffusion Filter		1
14	PM1200-14	Filter Guard		2
15	PM1200-15	Short Chrome Strip		4
	PM1200-14A	Filter Guard Assembly (includes #14 and 15)		1
16	PM1200-16	Cabinet		1
	PM1200-16A	Cabinet Assembly (includes #3, 4, 9 and 16)		1
17	PM1200-17	Control Switch Assembly		1
17-1	PM1200-1701	Circuit Board Assembly		1
17-2	TS-1540031	Hex Nut	M5	2
17-3	PM1200-1703	Toothed Washer	M5	2
17-4	PM1200-1704	Switch Plate		1
17-5	TS-1531012	Counter Sunk Screw	M3x6	4
17-6	PM1200-1706	Control Switch Label		1
17-7	PM1200-1707	Thermos Switch	5A	1
17-8	TS-1533042	Phillips Pan Head Machine Screw	M5x12	1
17-9	PM1200-1709	Wiring Nut	P2	1
17-10	PM1200-1710	Strain Relief		1
17-11	PM1200-1711	Power Cord	18AWGx3C	1
18	PM1200-18	Tapping Screw	M4x6	4
19	PM1200-19	Concave Handle		2
20	PM1200-20	RF Transmitter Assembly		1
20-1	PM1200-2001	RF Transmitter		1
20-2	PM1200-2002	Holder		1
20-3	PM1200-2003	Wood Screw	M3x12	2
21		Battery ( <i>local purchase</i> )	9 Volt	1
22	6823013	Black Stripe		2
23	PM1200-23	Long Chrome Strip		2
24	PM1200-24	Blower Assembly		1
24-1	TS-1503071	Socket Head Cap Screw	M6x30	4
24-2	TS-1550041	Flat Washer	M6	4
24-3	PM1200-2403	Sleeve		4
24-4	PM1200-2404	Rubber Pad		4
24-5	TS-1540031	Hex Nut	M5	4
24-6	PM1200-2406	Motor Bracket		1
24-7	PM1200-2407	Motor	1/4HP, 115V	1
24-8	TS-1534032	Phillips Pan Head Machine Screw	M6x8	12
24-9	PM1200-2409	Air Guide Plate		2
24-10	PM1200-2410	Fan Blade		1
24-11	TS-1504021	Socket Head Cap Screw	M8x12	1
24-12	PM1200-2412	Fan Housing		1
	PM1200-HD	Hardware Kit (includes index # 5, 6 and 7)		1
	PM1200-ID	I.D. Label (not shown)		1
	LM000210	Warning Label (not shown)		1

Items with an asterisk (\*) are included in the PM1200-HD Hardware Kit.

## Replacement Filters:

Stock No.	Description
1791082 .....	Inner Filter, PM1200
1791083 .....	Outer Filter, PM1200
1791084 .....	Charcoal Diffusion Filter, PM1200 (optional)
1791085 .....	Washable Electrostatic Filter, PM1200 (optional)

## Electrical Connections

