



# SERVICE PARTS LIST

BULLETIN NO.  
54-12-1206

SPECIFY CATALOG NO. AND SERIAL NO. WHEN ORDERING PARTS		REVISED BULLETIN 54-12-1205	DATE Nov. '96
<b>SUPER HOLE-SHOOTER</b>			
CATALOG NO. 1754-1	SERIAL NUMBER 566B	WIRING INSTRUCTION 58-01-0940	

**EXAMPLE:**  
Component Parts (Small #)  
Are Included When Ordering  
The Assembly (Large #).

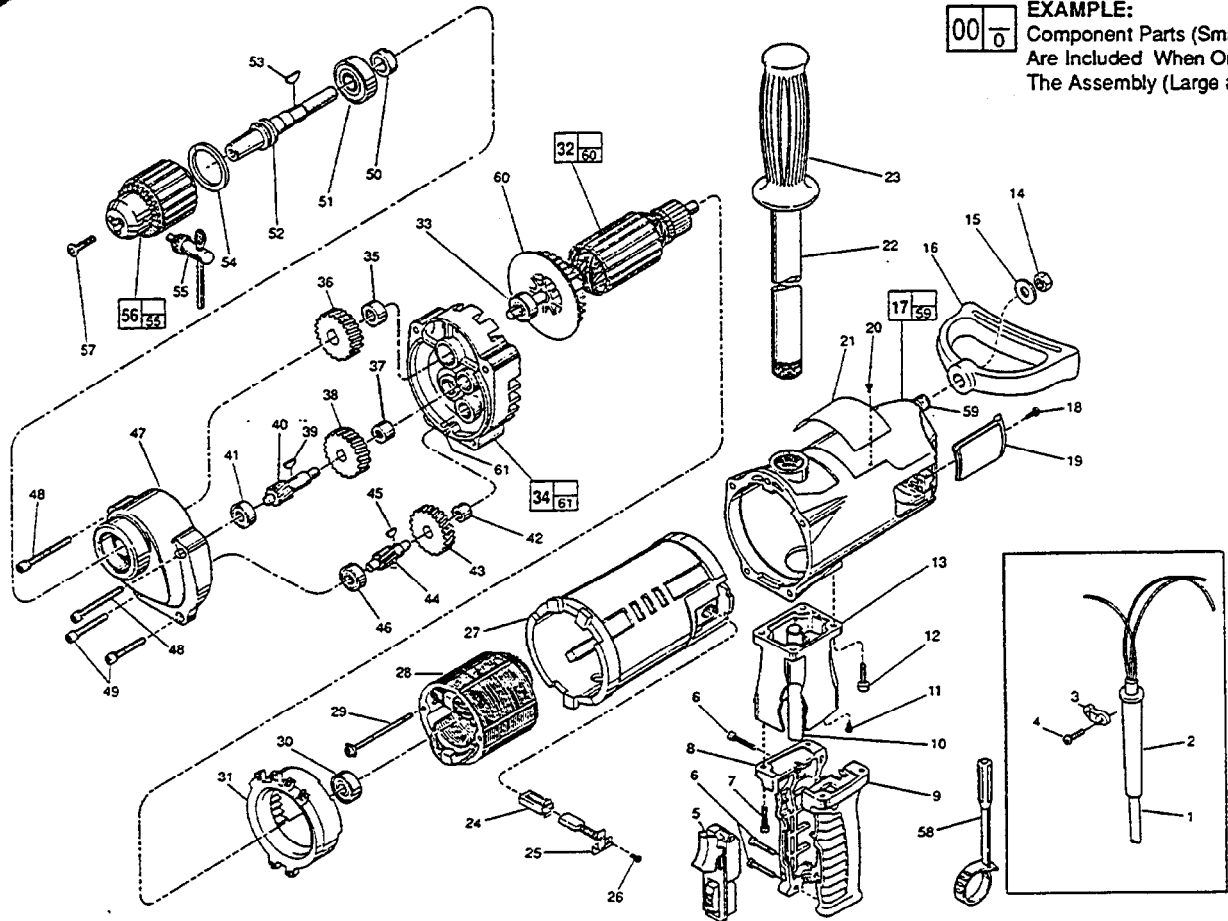


FIG.	PART NO.	DESCRIPTION OF PART	NO.	REQ.
	1	22-64-0121 Cord Set	(1)	
	2	44-76-0140 Cord Protector	(1)	
	3	31-17-0156 Cord Clamp	(1)	
	4	06-82-7270 8-16 x 5/8" Slotted Plastite T-20 Screw	(2)	
	5	23-66-1420 Switch	(1)	
	6	06-82-7326 8-16 x 1" Slotted Plastite T-20 Screw	(3)	
★	7	06-82-5382 1/4-20 x 3/4" Pan Hd. Tapite T-27 Screw	(4)	
★	8	31-44-1441 Right Handle Half	(1)	
★	9	31-44-1446 Left Handle Half	(1)	
	10	23-16-1440 Insulating Tube	(1)	
	11	06-95-5200 8-32 x 5/16" Slotted Hex Hd. Screw	(1)	
	12	06-95-5645 1/4-20 x 3/4" Pan Hd. Tapite Screw	(4)	
★	13	25-86-1615 Handle Spacer	(1)	
	14	06-55-2850 1/2-13 Hex Nut	(1)	
	15	45-88-5253 Thrust Washer	(1)	
	16	31-44-1450 Spade Handle	(1)	
	17	28-50-6365 Motor Housing	(1)	
	18	06-82-5316 8-32 x 1/2" Sit. Pan Hd. Tapite T-20 Screw	(2)	
	19	22-32-0350 Brush Cover	(2)	
	20	06-72-1720 Nameplate Rivet	(2)	
	21	12-15-7510 Service Nameplate	(1)	
	22	43-62-0121 Pipe Handle	(1)	
	23	43-62-0246 Handle Grip	(1)	
	24	22-20-0680 Brush Tube	(2)	
	25	22-18-0701 Carbon Brush Assembly	(2)	
	26	06-82-8835 8-32 x 5/16" Pan Hd. T-20 Sems	(2)	
	27	23-16-1420 Insulated Housing	(1)	
	28	18-70-0310 120 V. Field	(1)	
	29	06-82-9072 10-24 x 2-1/8" Pan Hd. T-25 Sems	(2)	
	30	02-04-1041 Ball Bearing	(1)	
	31	42-14-0291 Baffle	(1)	
	32	16-70-0340 120 V. Armature	(1)	
	33	02-04-1229 Ball Bearing	(1)	
	34	14-13-0241 Diaphragm Assembly	(1)	
	35	02-50-4040 Needle Bearing	(1)	
	36	32-75-1001 Spindle Gear	(1)	
	37	02-50-2450 Needle Bearing	(1)	
	38	32-44-1221 Intermediate Gear	(1)	

FIG.	PART NO.	DESCRIPTION OF PART	NO.	REQ.
	39	06-42-1600 Woodruff Key	(1)	
	40	36-66-0501 Intermediate Pinion Shaft	(1)	
	41	02-04-0910 Ball Bearing	(1)	
	42	02-50-2450 Needle Bearing	(1)	
	43	32-40-1001 Intermediate Gear	(1)	
	44	36-66-3001 Intermediate Pinion Shaft	(1)	
	45	06-42-1200 Woodruff Key	(1)	
	46	02-04-0910 Ball Bearing	(1)	
	47	28-14-0402 Gear Case	(2)	
	48	06-82-8440 1/4-20 x 2-1/2" Fil. Tapite T-30 Sems	(2)	
	49	06-82-8396 1/4-20 x 2-1/4" Fil. Tapite T-30 Sems	(2)	
	50	45-36-0200 Spacer	(1)	
	51	02-04-2031 Ball Bearing	(1)	
	52	38-50-5500 Reversing Spindle	(1)	
	53	06-42-2400 Woodruff Key	(1)	
	54	34-80-3450 Retaining Ring	(1)	
	55	48-66-3160 Chuck Key	(1)	
	56	48-66-2085 Chuck	(1)	
	57	06-81-3100 5/16-18x1" Socket Hd. Screw	(1)	
	58	48-66-4020 Chuck Key Holder	(1)	
	59	06-14-0010 1/2 x 13 x 1-3/8" Hex Hd. Bolt	(1)	
	60	22-84-0790 Fan	(1)	
	61	06-65-1155 Pin	(1)	

FIG. 47 LUBRICATION  
7-3/4 Oz. "E" Grease, No. 49-08-4122.

FIG. 12 NOTES  
Tighten one screw until lockwasher is touching handle spacer. Tighten the diagonally opposite screw (70-80 lbs./in. on new motor housing) and then sequentially tighten the other screws.

48,49 Apply Type 242 Blue Loctite.

MILWAUKEE ELECTRIC TOOL CORPORATION  
13135 W. LISBON RD., BROOKFIELD, WI 53005