



# SERVICE PARTS LIST

**BULLETIN NO.**  
**54-12-1205**

SPECIFY CATALOG NO. AND SERIAL NO. WHEN ORDERING PARTS		REVISED BULLETIN 54-12-1204	DATE Mar.'94
<b>SUPER HOLE-SHOOTER</b>		WIRING INSTRUCTION <b>58-01-0940</b>	
CATALOG NO. <b>1754-1</b>	SERIAL NUMBER <b>566A</b>		

**EXAMPLE:**  
Component Parts (Small #)  
Are Included When Ordering  
The Assembly (Large #).

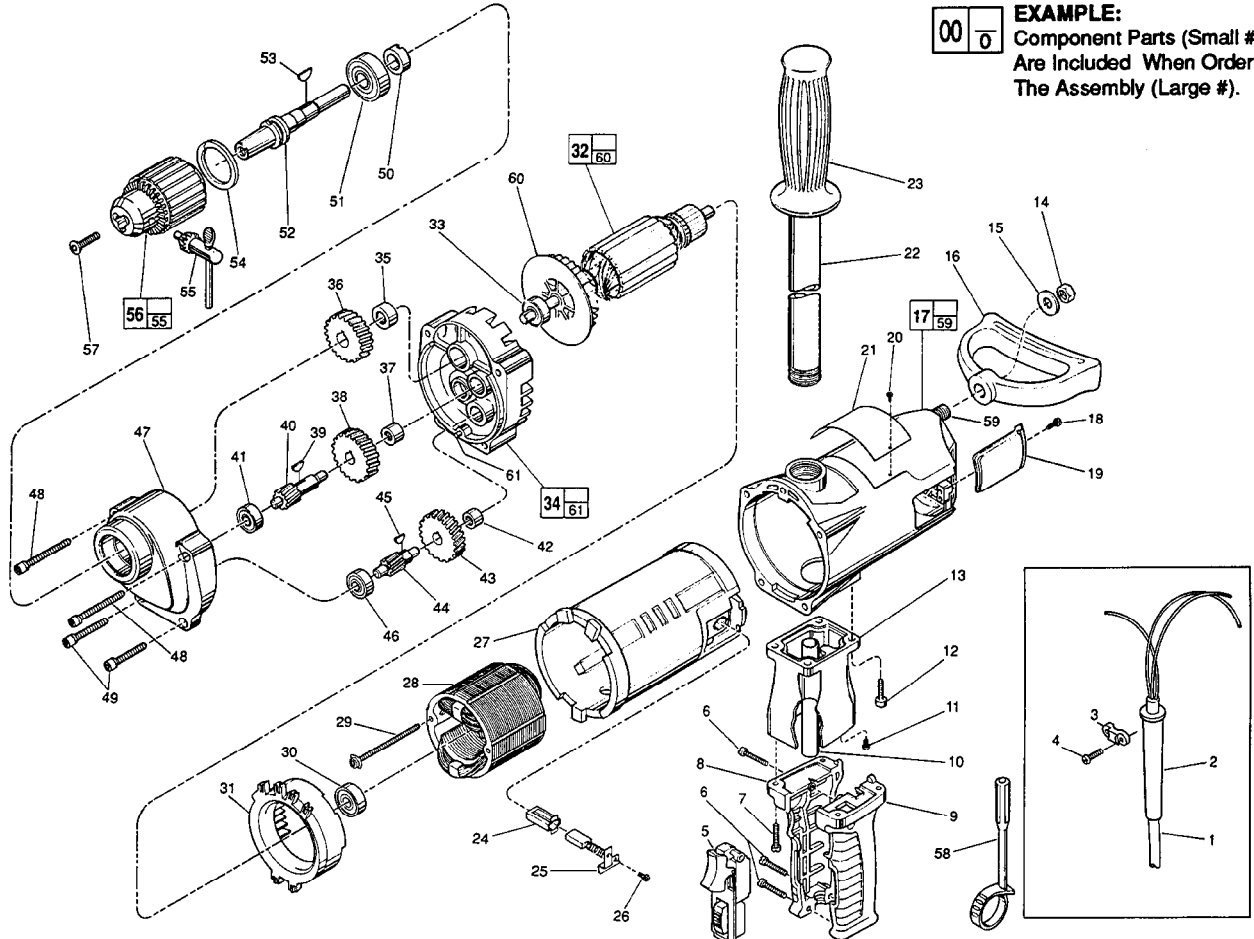


FIG. PART NO.	DESCRIPTION OF PART	NO. REQ.
1	22-64-0121 Cord Set	(1)
2	44-76-0140 Cord Protector	(1)
3	31-17-0156 Cord Clamp	(1)
4	06-82-7270 8-16 x 5/8" Slotted Plastite T-20 Screw	(2)
5	23-66-1420 Switch	(1)
6	06-82-7326 8-16 x 1" Slotted Plastite T-20 Screw	(3)
7	06-82-5358 12-24 x 3/4" Pan Hd. Taptite T-27 Screw	(4)
8	31-44-1440 Right Handle Half	(1)
9	31-44-1445 Left Handle Half	(1)
10	23-16-1440 Insulating Tube	(1)
11	06-95-5200 8-32 x 5/16" Slotted Hex Hd. Screw	(1)
12	06-95-5645 1/4-20 x 3/4" Pan Hd. Taptite Screw	(4)
★ 13	25-86-1610 Handle Spacer	(1)
14	06-55-2850 1/2-13 Hex Nut	(1)
15	45-88-5253 Thrust Washer	(1)
16	31-44-1450 Spade Handle	(1)
17	28-50-6365 Motor Housing	(1)
18	06-82-5316 8-32 x 1/2" Slit. Pan Hd. Taptite T-20 Screw	(2)
19	22-32-0350 Brush Cover	(1)
★ 20	06-72-1720 Nameplate Rivet	(2)
★ 21	12-15-7510 Service Nameplate	(1)
22	43-62-0121 Pipe Handle	(1)
23	43-62-0246 Handle Grip	(1)
24	22-20-0680 Brush Tube	(2)
25	22-18-0701 Carbon Brush Assembly	(2)
26	06-82-8835 8-32 x 5/16" Pan Hd. T-20 Sems	(2)
27	23-16-1420 Insulated Housing	(1)
28	18-70-0310 120 V. Field	(1)
29	06-82-9072 10-24 x 2-1/8" Pan Hd. T-25 Sems	(2)
30	02-04-1041 Ball Bearing	(1)
31	42-14-0291 Baffle	(1)
32	16-70-0340 120 V. Armature	(1)
33	02-04-1229 Ball Bearing	(1)
34	14-13-0241 Diaphragm Assembly	(1)
35	02-50-4040 Needle Bearing	(1)
36	32-75-1001 Spindle Gear	(1)
37	02-50-2450 Needle Bearing	(1)
38	32-44-1221 Intermediate Gear	(1)

FIG. PART NO.	DESCRIPTION OF PART	NO. REQ.
39	06-42-1600 Woodruff Key	(1)
40	36-66-0501 Intermediate Pinion Shaft	(1)
41	02-04-0910 Ball Bearing	(1)
42	02-50-2450 Needle Bearing	(1)
43	32-40-1001 Intermediate Gear	(1)
44	36-66-3001 Intermediate Pinion Shaft	(1)
45	06-42-1200 Woodruff Key	(1)
46	02-04-0910 Ball Bearing	(1)
47	28-14-0402 Gear Case	(1)
48	06-82-8440 1/4-20 x 2-1/2" Fil. Taptite T-30 Sems	(2)
★ 49	06-82-8396 1/4-20 x 2-1/4" Fil. Taptite T-30 Sems	(2)
50	45-36-0200 Spacer	(1)
51	02-04-2031 Ball Bearing	(1)
52	38-50-5500 Reversing Spindle	(1)
53	06-42-2400 Woodruff Key	(1)
54	34-80-3450 Retaining Ring	(1)
55	48-66-3160 Chuck Key	(1)
56	48-66-2085 Chuck	(1)
57	06-81-3100 5/16-18x1" Socket Hd. Screw	(1)
58	48-66-4020 Chuck Key Holder	(1)
59	06-14-0010 1/2 x 13 x 1-3/8" Hex Hd. Bolt	(1)
60	22-84-0790 Fan	(1)
61	06-65-1155 Pin	(1)

**FIG. LUBRICATION**  
47 7-3/4 Oz. "E" Grease, No. 49-08-4122.

**FIG. NOTES**  
12 Tighten one screw until lockwasher is touching handle spacer. Tighten the diagonally opposite screw (70-80 lbs./in. on new motor housing) and then sequentially tighten the other screws.

48,49 Apply Type 242 Blue Loctite.

**MILWAUKEE ELECTRIC TOOL CORPORATION**  
13135 W. LISBON RD., BROOKFIELD, WI 53005