



Parts Manual

Mfg. No: 1696741-00
1222EE, B&S 11.5 Gross TP 22" Single
Stage Snowthrower (2017)

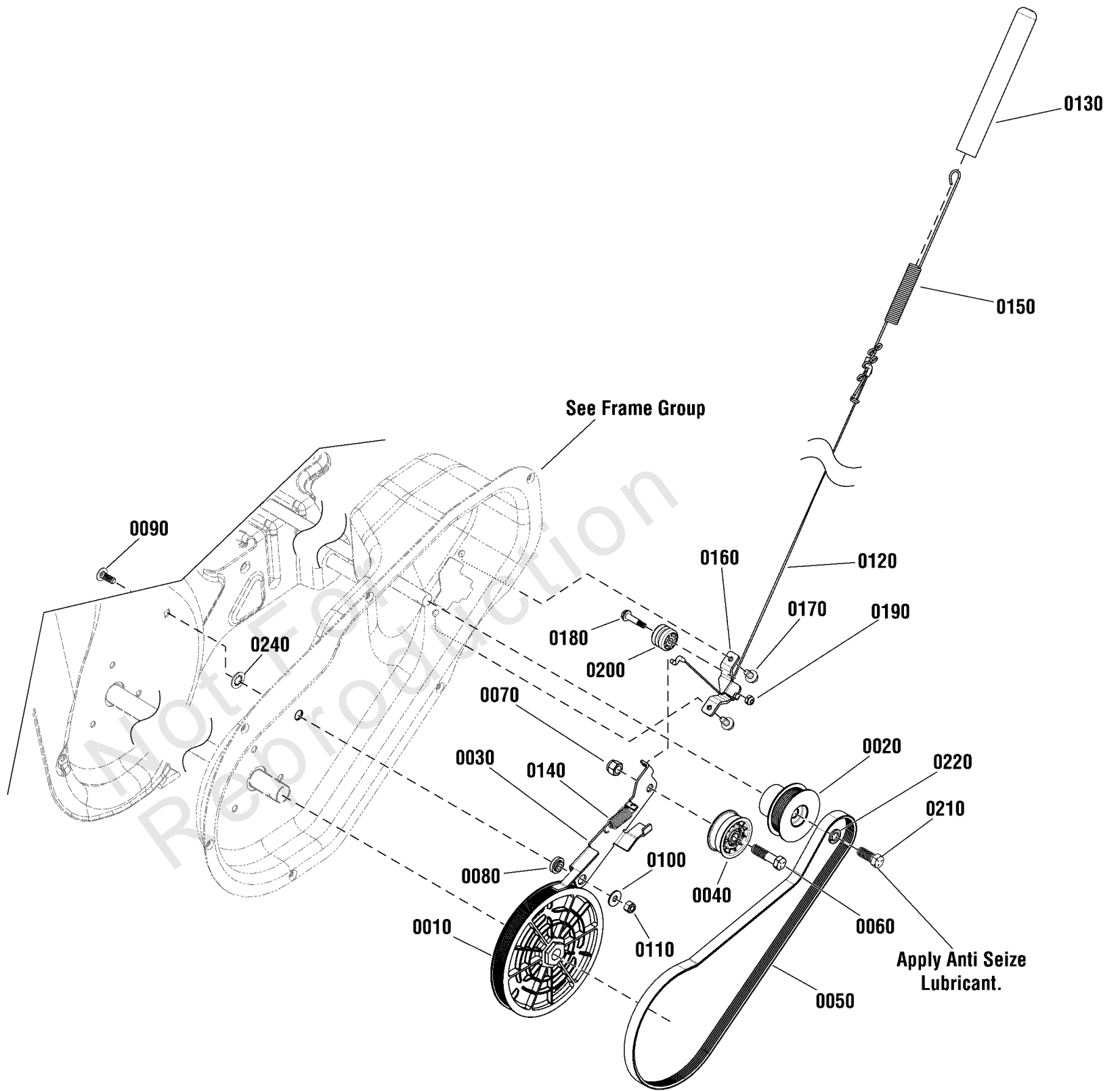
| Model Components | Page |
|--|-------------|
| Auger Drive Group..... | 4 |
| Auger Group..... | 6 |
| Chute Group - Electric..... | 8 |
| Chute Rotation Group - Electric..... | 10 |
| Decals Group..... | 12 |
| Engine Group..... | 14 |
| Frame Group..... | 16 |
| Handles & Controls Group - Electric..... | 18 |
| Light Panel Group..... | 20 |
| Wheel & Body Covering Group..... | 22 |
| Torque Specification Chart..... | 24 |

Not For
Reproduction

Auger Drive Group

Note: Unless noted otherwise, use the standard torque specifications

Mfg. No: 1696741-00



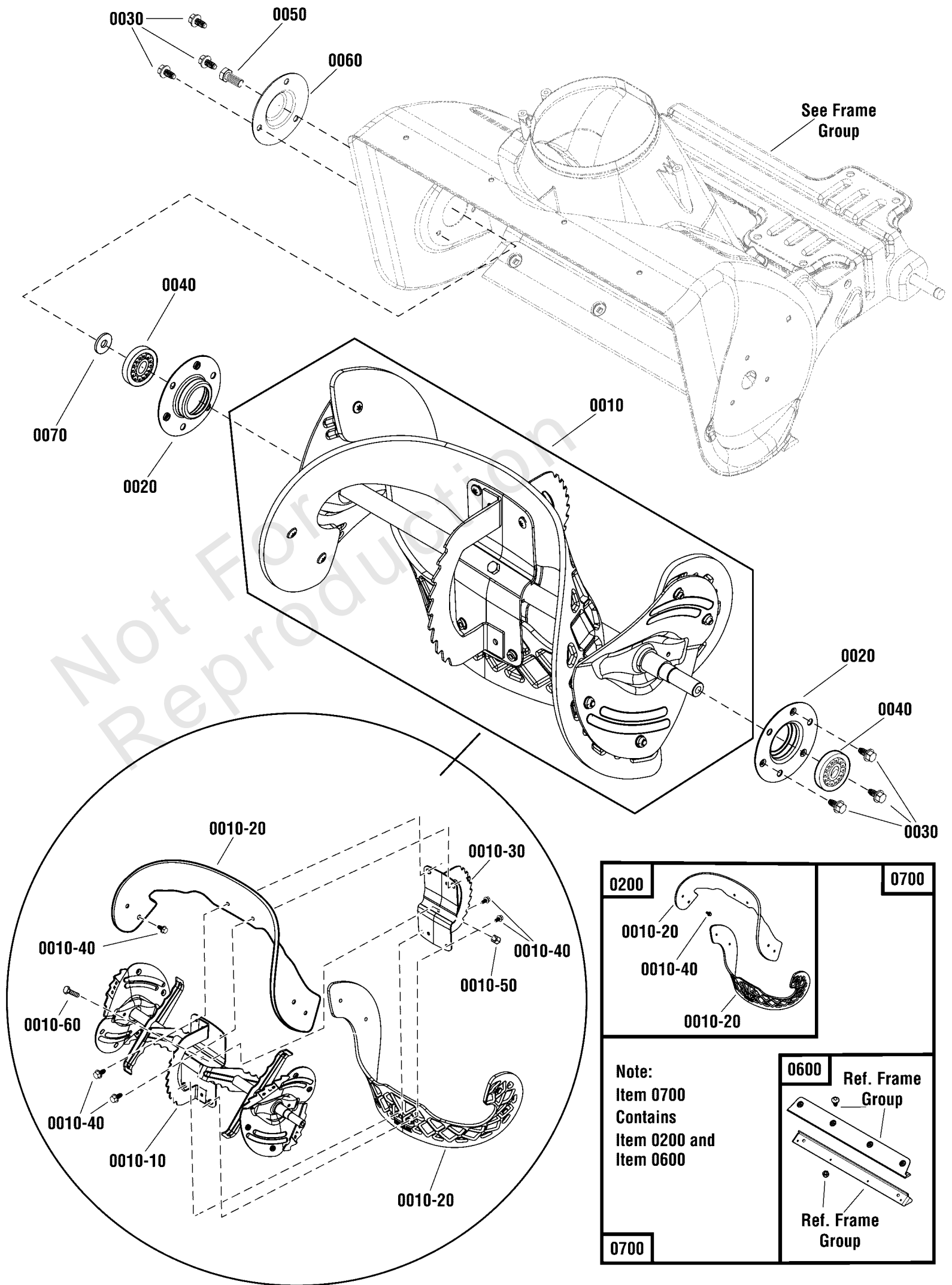
Auger Drive Group

| REF NO | PART NO | QTY | DESCRIPTION |
|--------|-----------|-----|---|
| 0010 | 707379 | 1 | PULLEY, Driven |
| 0020 | 1739179YP | 1 | PULLEY, Driver |
| 0030 | 1739526YP | 1 | ARM, Idler, Drive |
| 0040 | 1502120MA | 1 | IDLER, Plastic Ball Bearing |
| 0050 | 1739338YP | 1 | BELT, Drive |
| 0060 | 703406 | 1 | CAPSCREW, Hex Head, 3/8-16 x 1-1/2 |
| 0070 | 703117 | 1 | NUT, Nylock, 3/8 |
| 0080 | 1739709YP | 1 | SPACER, Idler Arm |
| 0090 | 1931318SM | 1 | BOLT, Carriage, Short Neck, 1/4-20 x 7/8 G5 |
| 0100 | 7091253YP | 1 | WASHER, Flat, .281 X 3/4 x 1/2 |
| 0110 | 703232 | 1 | NUT, Nylock, 1/4 |
| 0120 | 1502113MA | 1 | CABLE, Handle |
| 0130 | 1739935YP | 1 | BOOT, Clutch Spring |
| 0140 | 1750226YP | 1 | SPRING, Idler |
| 0150 | 1750315YP | 1 | SPRING, Extension |
| 0160 | 1750329YP | 1 | BRACKET, Cable Guide |
| 0170 | 704130 | 2 | SCREW, Hex Washer Head, 1/4-20 x 1/2 |
| 0180 | 1750594YP | 1 | CAPSCREW, Hex Shoulder, 1/4 x 3/4 |
| 0190 | 703937 | 1 | NUT, Locking, #10 |
| 0200 | 579860MA | 1 | SPOOL CABLE, Auger Control |
| 0210 | 001X20MA | 1 | CAPSCREW, Hex Head, 3/8-24 x 1 |
| 0220 | 706162 | 1 | WASHER, Locking, 3/8 |
| 0240 | 703826 | 1 | RETAINER, Pushnut, 1/4 |

Auger Group

Note: Unless noted otherwise, use the standard torque specifications

Mfg. No: 1696741-00



Auger Group

| REF NO | PART NO | QTY | DESCRIPTION |
|---------|------------|-----|--|
| 0010 | 1687814 | 1 | AUGER ASSEMBLY, Complete -(Incl. Ref. Nos. 0010-10, 0010-20, 0010-30, 0010-40, 0010-50 & 0010-60) |
| 0010-10 | ----- | 1 | * AUGER SHAFT ASSEMBLY |
| 0010-20 | ----- | 2 | ** FLIGHT, Auger -(Included with Ref. No. 0200) |
| 0010-30 | ----- | 2 | * PLATE, Auger, Center |
| 0010-40 | 770003 | 12 | SCREW, Pan Head Torx, 1/4-20 x 3/4 -(Included with Ref. No. 0200) |
| 0010-50 | 703232 | 1 | NUT, Nylock, 1/4-20 |
| 0010-60 | 703234 | 1 | CAPSCREW, Hex Head, 1/4-20 X 1 1/2, G5 |
| 0020 | 1739228YP | 2 | RETAINER, Bearing |
| 0030 | 704130 | 6 | SCREW, Hex Washer Head, Trilob, 1/4-20 x 1/2 |
| 0040 | 1705897SM | 2 | BEARING, Ball, 11/16 x 1-9/16 x 15/32 |
| 0050 | 704287 | 1 | CAPSCREW, Hex Head, 5/16-18 x 3/4 |
| 0060 | 1739229AYP | 1 | CAP, BEARING |
| 0070 | 703118 | 1 | WASHER, Flat, 7/8 x 21/64 |
| 0200 | 1687804 | 1 | KIT, AUGER FLIGHT -(Incl. Ref. Nos. 0030 & 0010-40) |
| 0600 | 1687805 | 1 | KIT, Scraper Bar -(Reference Frame group) |
| 0700 | 1687806 | 1 | KIT, Scraper Bar & Flight -(Incl. Ref. Nos. 0200 & 0600) |

Footnotes:

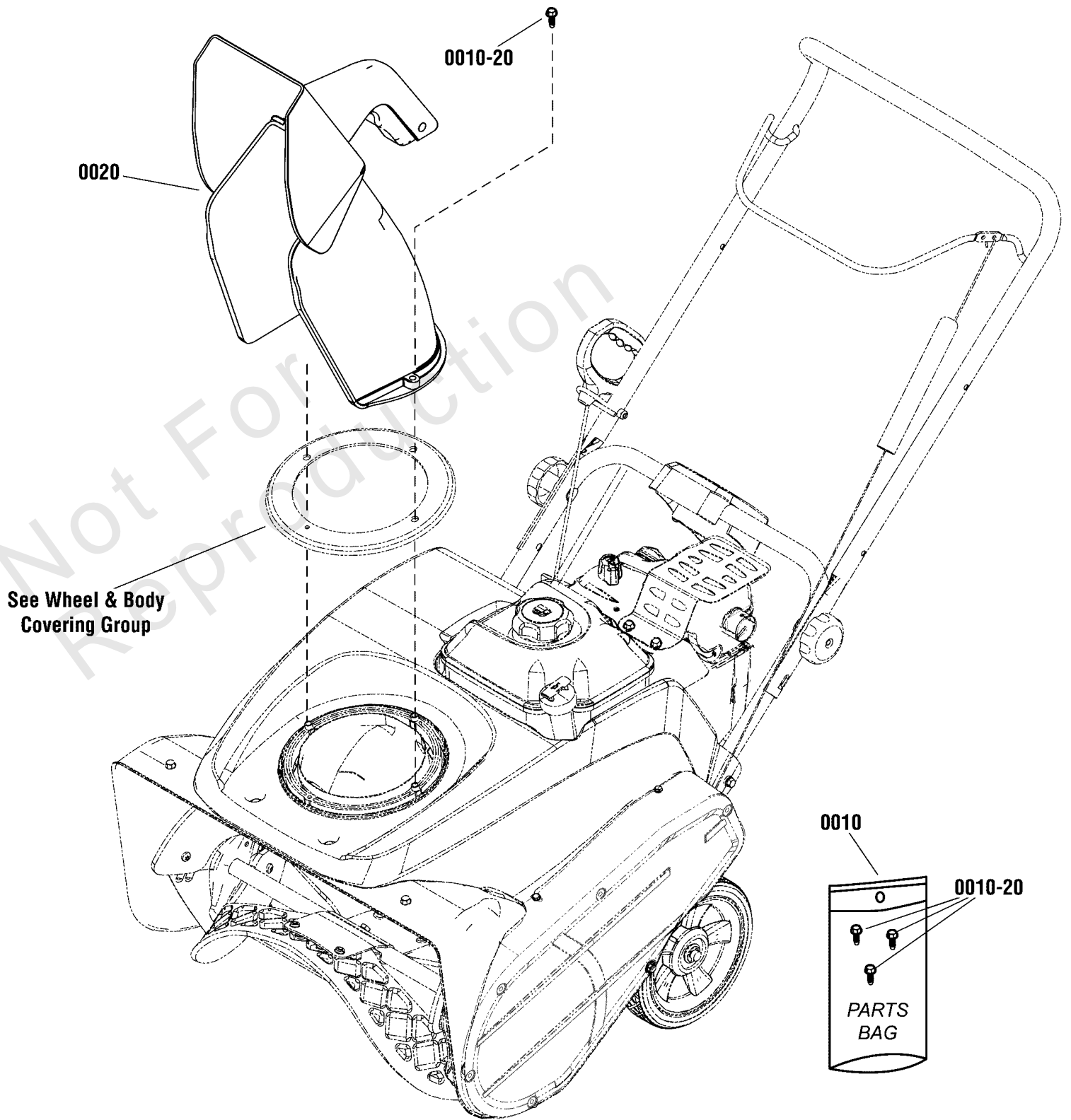
Note: ** Not a servicable part, order Auger Flight Kit.

Note: * Not a servicable part, order complete Auger Assembly.

Chute Group - Electric

Note: Unless noted otherwise, use the standard torque specifications

Mfg. No: 1696741-00



Chute Group - Electric

| REF NO | PART NO | QTY | DESCRIPTION |
|---------------|----------------|------------|---|
| 0010 | 1751006YP | 1 | PARTS BAG |
| 0010-20 | 1751399YP | 3 | SCREW, Hex Washer Head, HI-LO, 1/4-15 x 1-1/4 |
| 0020 | 1739522YP | 1 | CHUTE ASSEMBLY |

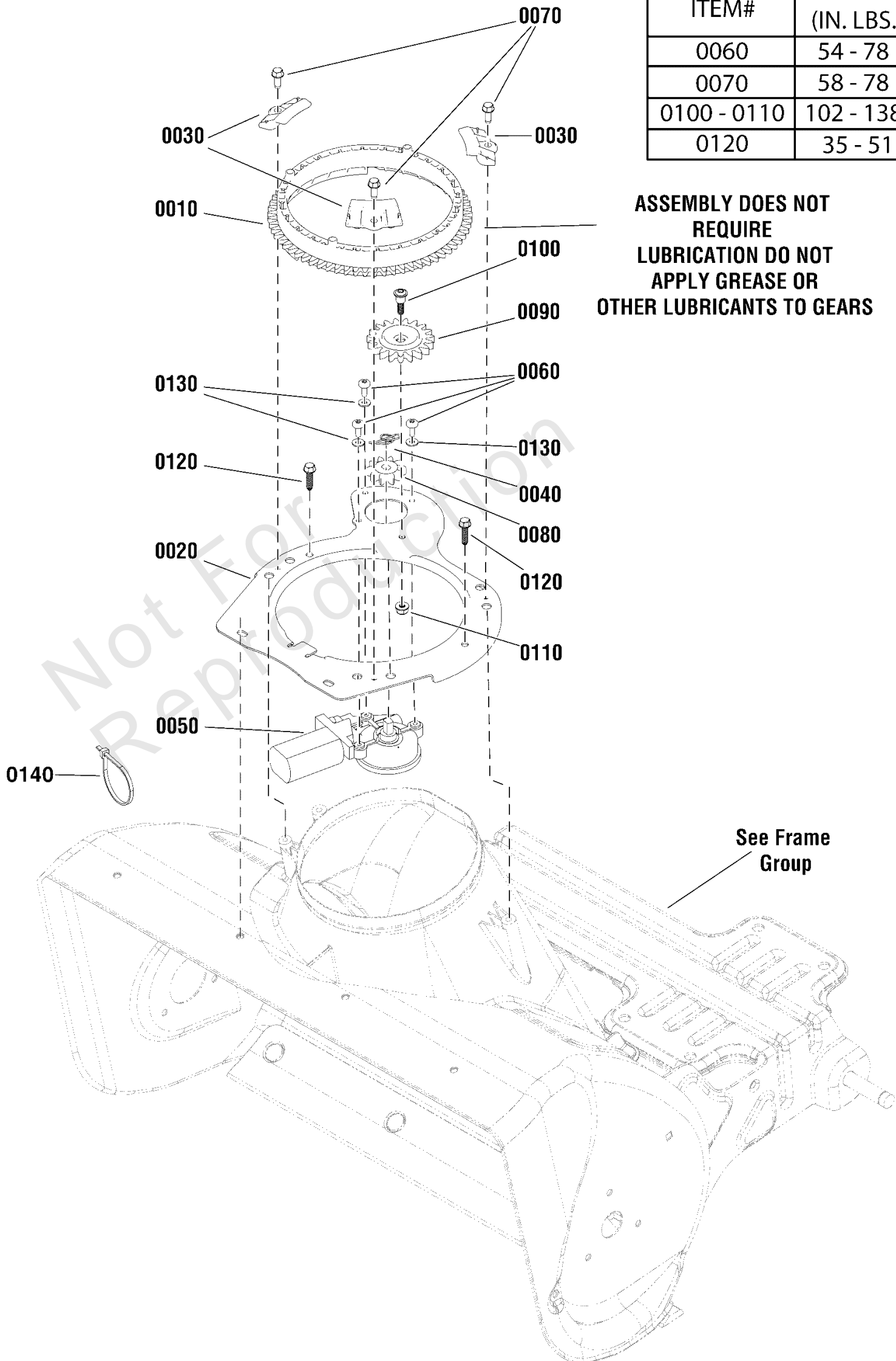
Not For Reproduction

Chute Rotation Group - Electric

Note: Unless noted otherwise, use the standard torque specifications

Mfg. No: 1696741-00

| ITEM# | TORQUE (IN. LBS.) |
|-------------|----------------------|
| 0060 | 54 - 78 |
| 0070 | 58 - 78 |
| 0100 - 0110 | 102 - 138 |
| 0120 | 35 - 51 |



Chute Rotation Group - Electric

| REF NO | PART NO | QTY | DESCRIPTION |
|--------|-----------|-----|---|
| 0010 | 706509 | 1 | GEAR, Chute Rotation |
| 0020 | 706510 | 1 | PLATE, Chute Mounting |
| 0030 | ----- | 3 | RETAINER, Chute |
| 0040 | 7091594SM | 1 | PIN, Cotter, 1/2 |
| 0050 | 1739309YP | 1 | MOTOR, Chute Rotation |
| 0060 | 1739621YP | 3 | SCREW, Torx Button Head, M5 x .8 x 14 |
| 0070 | 703054 | 3 | SCREW, Hex Washer Head, 1/4-20 x 5/8 |
| 0080 | 706512 | 1 | GEAR, 10T |
| 0090 | 706513 | 1 | GEAR, 19T |
| 0100 | 706514 | 1 | SCREW, Shoulder Button Washer Head, 1/4-20 x 1.00 |
| 0110 | 703463 | 1 | NUT, Flange Nylock , 1/4-20 |
| 0120 | 706516 | 2 | SCREW, High-Low, 1/4-15 x 1.00 |
| 0130 | 7091552SM | 3 | WASHER, Flat, 1/4 |
| 0140 | 7024649YP | 1 | WIRE TIE, 11 Inch Standard Black Nylon |

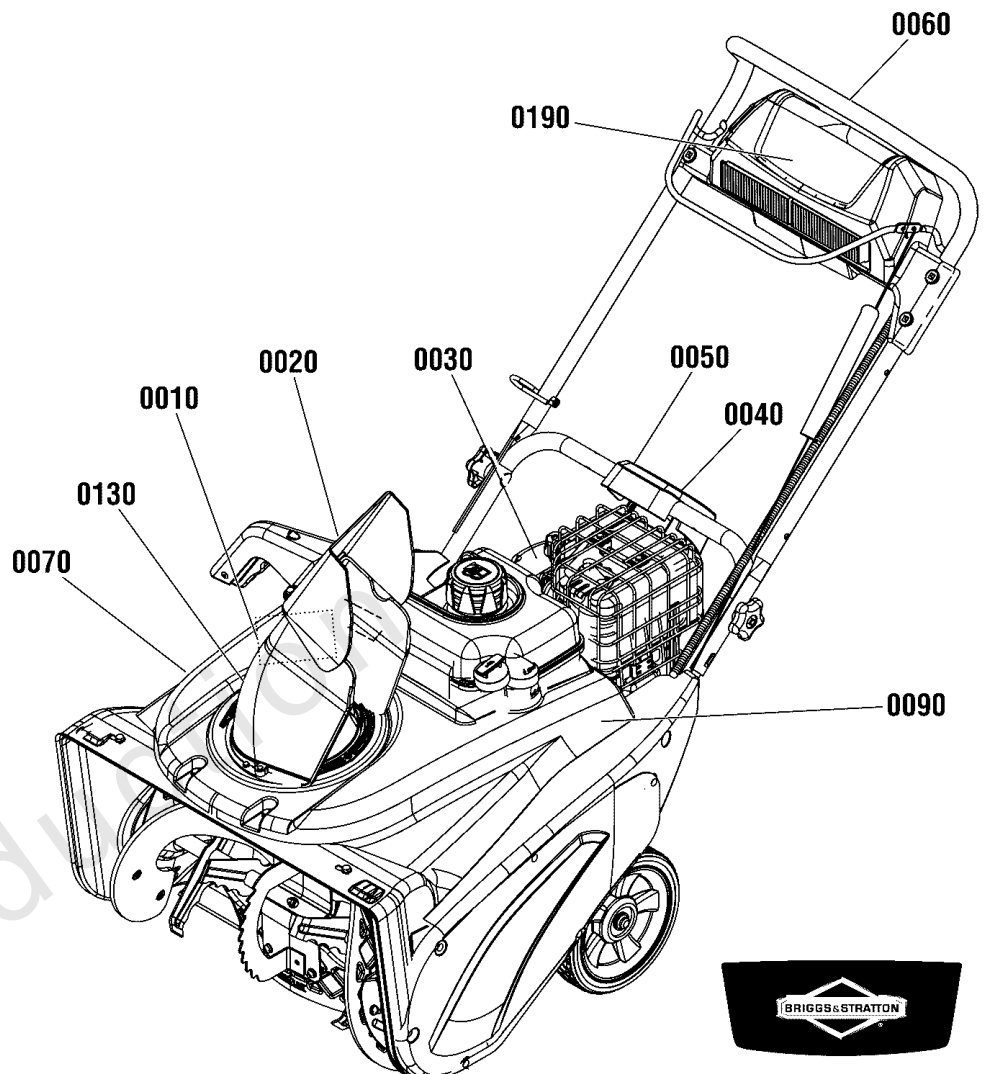
Not For Reproduction

| | | |
|---|--|--|
| ⚠ DANGER | | |
| Shut off engine and remove key before performing maintenance or repair work. | | Arrêter le moteur et retirer la clé avant d'effectuer tout entretien ou toute réparation. |
| Read the operator's manual for operating and safety instructions. | | Lire les consignes de sécurité et d'utilisation dans le manuel d'utilisation. |
| Thrown Objects Hazard • Never direct discharge chute towards persons or property. | | Danger objets projetés • Ne jamais diriger la chute en direction des personnes ou biens matériels. |
| Amputation Hazard • Contact with auger will cause serious injury. • Keep hands, feet and clothing away. • Keep bystanders away. | | Risque d'amputation • Tout contact avec la tarière provoquera de graves blessures. • Tenir vos pieds, vos mains et vêtements à distance. • Tenir les spectateurs à distance. |
| <small>This spark ignition system complies with the Canadian standard K25-022. Ce système d'allumage par étincelle de véhicule est conforme à la norme NMB-022 du Canada.</small> | | |

0010

| | |
|--|--|
| ⚠ DANGER | |
| Amputation hazard | |
| Contact with moving parts inside chute will cause serious injury. | |
| • Shut off engine before unclogging discharge chute. | |
| • Use clean-out tool, not hands! | |
| | |
| Risque d'amputation | |
| Tout contact avec des pièces en mouvement à l'intérieur de la goulotte provoquera de graves blessures. | |
| • Arrêter le moteur avant de dégager la goulotte d'éjection. | |
| • Utiliser l'outil de dégagement, pas les mains! | |
| <small>1737885</small> | |

0020



0190

STEPS TO EASY STARTING
ÉTAPES POUR UN DÉMARRAGE FACILE

1 Turn engine ON
Mettez le moteur sur « ON » (marche)

2 Turn choke knob to CHOKE
Tournez le bouton de l'étrangleur sur « CHOKE »

3 For COLD engine PRIME 2X
Si le moteur est FROID amorcez-le 2 fois

After engine starts, turn to RUN
Une fois le moteur en marche, mettez-le sur « RUN »

0030

4 Plug in extension cord or Pull rope
Branchez le cordon d'extension ou tirez la corde

5 Push Button to Start
Appuyez sur le bouton pour démarrer

0060



0090

ASSEMBLED IN THE USA

0130

1222EE

0070

Decals Group

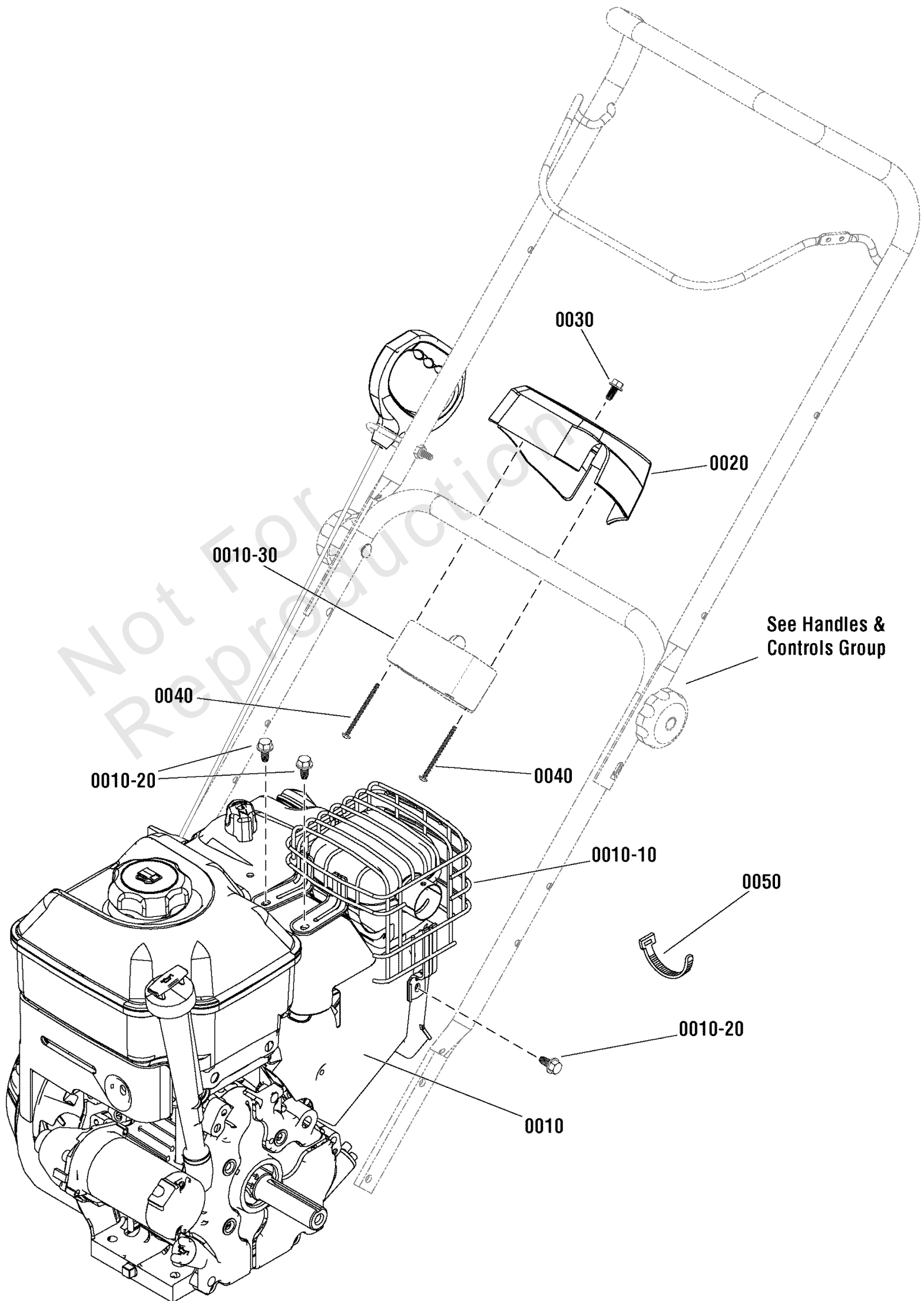
| REF NO | PART NO | QTY | DESCRIPTION |
|--------|-----------|-----|----------------------------------|
| 0010 | 1739966YP | 1 | DECAL, Chute, FR/ENG |
| 0020 | 1737865YP | 1 | DECAL, Danger, Chute, FR/ENG |
| 0030 | 1739970YP | 1 | DECAL, Step 1-2-3 |
| 0040 | 1750734YP | 1 | DECAL, 4 Start, FR/ENG |
| 0050 | 1750736YP | 1 | DECAL, 5 Start, FR/ENG |
| 0060 | 1739977YP | 1 | DECAL, Bail Engagement |
| 0070 | 770589 | 1 | DECAL, Briggs & Stratton, 1222EE |
| 0090 | 770590 | 2 | DECAL, Briggs & Stratton |
| 0130 | 1754247YP | 1 | DECAL, Assembled in USA |
| 0190 | 706788 | 1 | DECAL, Briggs & Stratton Logo |

Not For Reproduction

Engine Group

Note: Unless noted otherwise, use the standard torque specifications

Mfg. No: 1696741-00



Engine Group

| REF NO | PART NO | QTY | DESCRIPTION |
|---------|----------------|-----|---|
| 0010 | 15C107-0003-F8 | 1 | * ENGINE, 11.5TP Briggs & Stratton -(Engine Model: 15C107-0003-F8) |
| 0010 | 15C107-0014-F8 | 1 | * ENGINE, 11.5TP Briggs & Stratton -(Engine Model: 15C107-0014-F8) |
| 0010-10 | 793193 | 1 | GUARD, Muffler, Wire |
| 0010-20 | 699854 | 3 | SCREW, Muffler Guard, Hex Washer Head |
| 0010-30 | ----- | 1 | ** STARTER, 110V |
| 0020 | 1750032YP | 1 | HOUSING, Starter, 110V |
| 0030 | 704130 | 1 | SCREW, Hex Washer Head, Trilob, 1/4-20 x 1/2 |
| 0040 | 1750593YP | 2 | SCREW, Pan Head Phillips, Plast., 8-16 x 2-1/8 |
| 0050 | 032618MA | 4 | STRAP, Tie |
| -- | 6219MA | 1 | CORD, Electric, 10FT. 110V -(Not Illustrated) |

Not For
Reproduction

Footnotes:

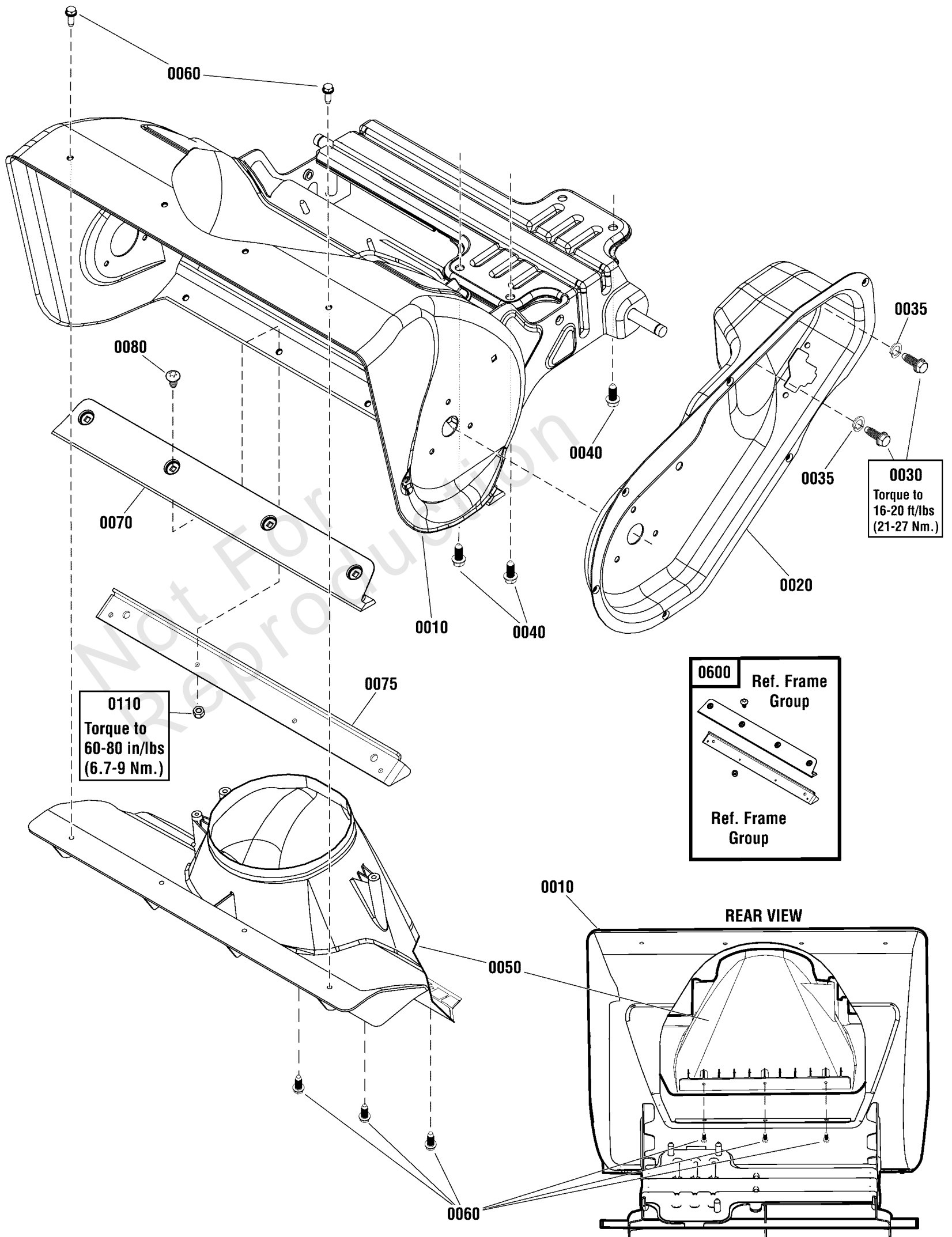
Note** See your local Briggs & Stratton distributor for parts and service.

Note* To verify your specific engine model, please reference the ID Tag located on your engine. See your local Briggs & Stratton distributor for parts and service.

Frame Group

Note: Unless noted otherwise, use the standard torque specifications

Mfg. No: 1696741-00



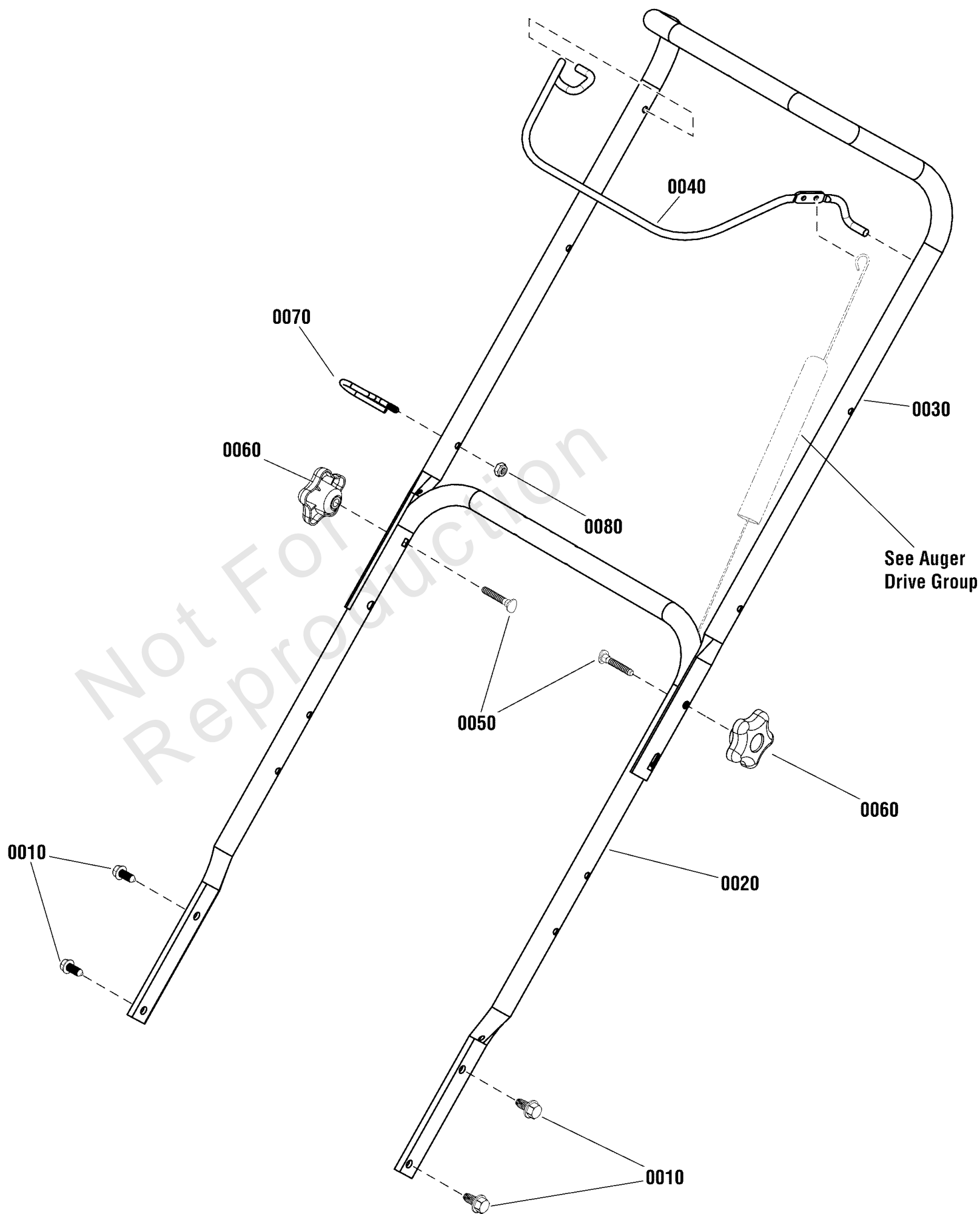
Frame Group

| REF NO | PART NO | QTY | DESCRIPTION |
|--------|-------------|-----|--|
| 0010 | 1756280AYP | 1 | FRAME ASSEMBLY |
| 0020 | 1739100BMYP | 1 | HOUSING, Drive |
| 0030 | 1752876YP | 2 | CAPSCREW, Hex Head, 5/16-24 x 5/8 |
| 0035 | 1917356SM | 2 | WASHER, Lock Helical Spring |
| 0040 | 2828635SM | 3 | SCREW, Taptite, 3/8-16 X 1 1/4 |
| 0050 | 1739555YP | 1 | CHIMNEY -Used without Service Kit 1687864, Refer to Chute Rotation Group |
| 0050 | 707849 | 1 | CHIMNEY -Used with Service Kit 1687864, Refer to Chute Rotation Group |
| 0060 | 1750444YP | 5 | SCREW, Hi-Low, 1/4-15 x 3/4 |
| 0070 | ----- | 1 | SCRAPER BAR -(Included with Ref. No. 0600) |
| 0075 | 1752660AYP | 1 | SUPPORT, Scraper Blade -(Included with Ref. No. 0600) |
| 0080 | 5025299X5YP | 4 | SCREW, 1/4-20 X 5/8 -(Included with Ref. No. 0600) |
| 0110 | 1752935YP | 4 | NUT, 1/4-20, Nylon Hex, CZ -(Included with Ref. No. 0600) |
| 0600 | 1687805 | 1 | KIT, Scraper Bar -(Includes Ref. Nos. 0070, 0075, 0080, 0110, Auger Flights & Hardware) |

Handles & Controls Group - Electric

Note: Unless noted otherwise, use the standard torque specifications

Mfg. No: 1696741-00



Handles & Controls Group - Electric

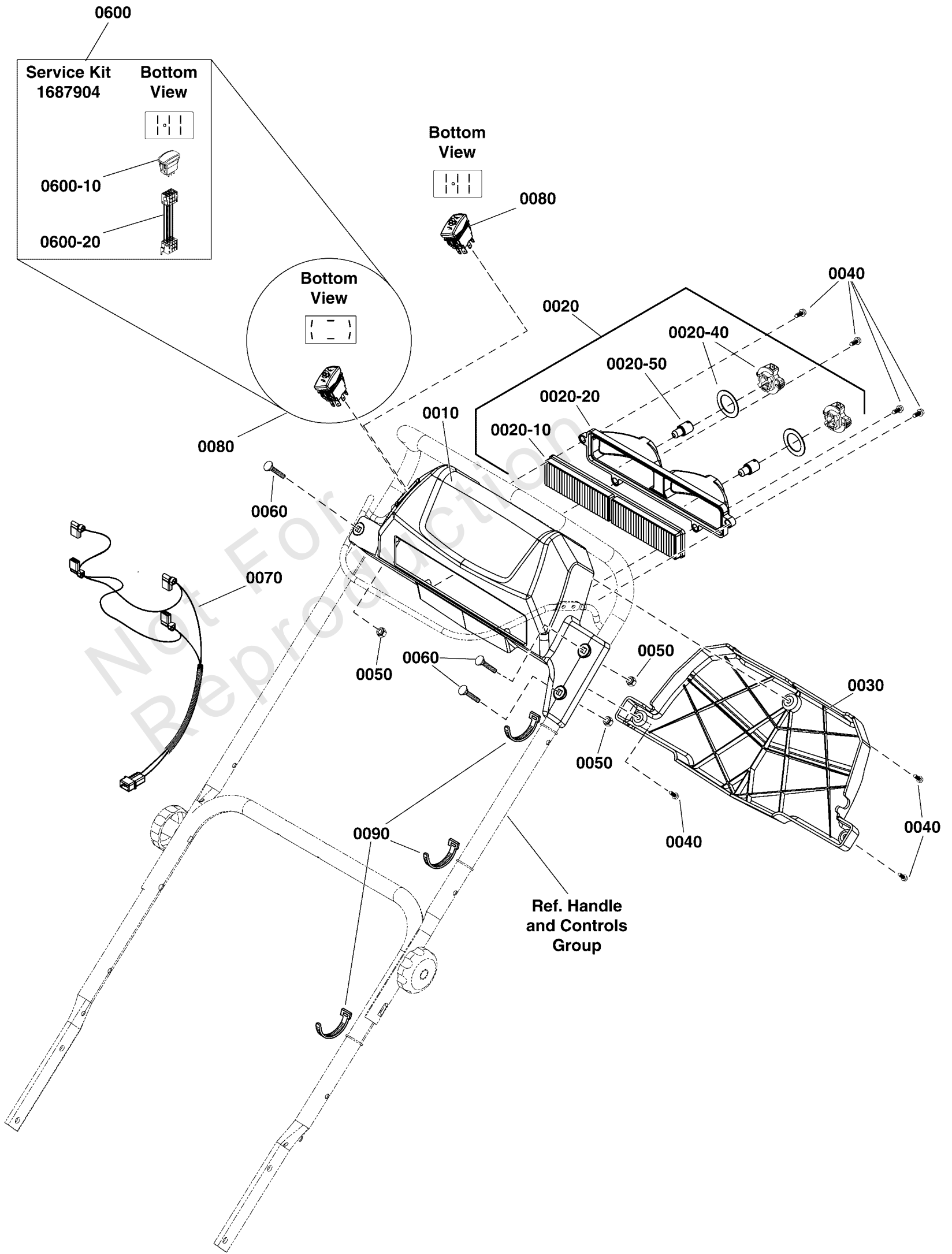
| REF NO | PART NO | QTY | DESCRIPTION |
|---------------|----------------|------------|--|
| 0010 | 703949 | 4 | SCREW, Hex Washer Head, Taptite, 5/16-18 x 5/8 |
| 0020 | 770051 | 1 | HANDLEBAR, Lower |
| 0030 | 705750 | 1 | HANDLEBAR, Upper |
| 0040 | 1739361BNYP | 1 | BAIL, Engine Stop |
| 0050 | 703059 | 2 | BOLT, Carriage, Curved Head, 5/16 x 2, G2 |
| 0060 | 7105085YP | 2 | KNOB, 5 Prong, 5/16-18 |
| 0070 | 1739389YP | 1 | GUIDE, Rope |
| 0080 | 703232 | 1 | NUT, 1/4 |

Not For Reproduction

Light Panel Group

Note: Unless noted otherwise, use the standard torque specifications

Mfg. No: 1696741-00



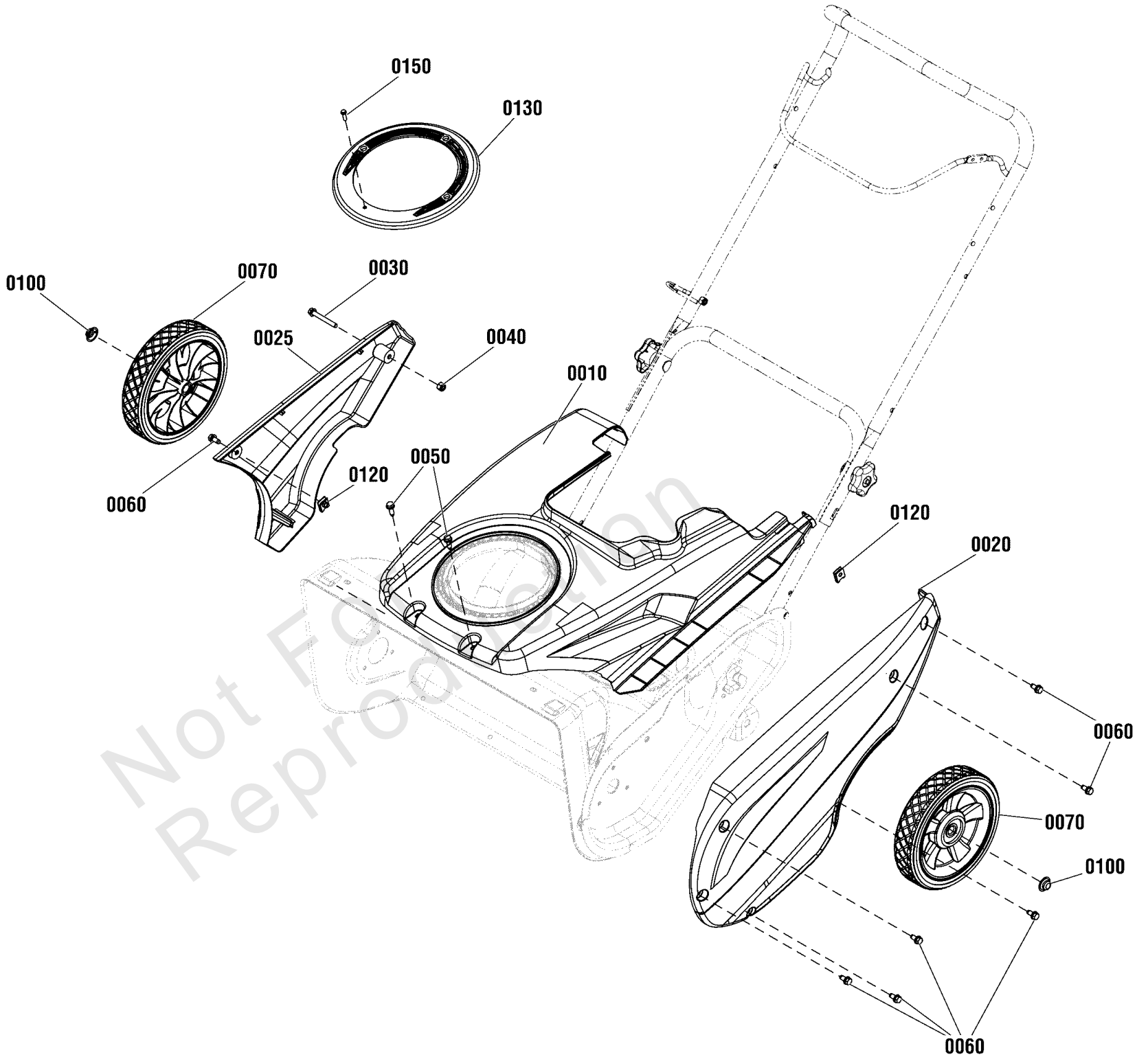
Light Panel Group

| REF NO | PART NO | QTY | DESCRIPTION |
|---------|-----------|-----|--|
| 0010 | 708157 | 1 | PANEL |
| 0020 | 1736176YP | 1 | HEADLIGHT ASSEMBLY -(Includes Ref. Nos. 0020-10, 0020-20, 0020-40, 0020-50) |
| 0020-10 | 1736177YP | 1 | LENS, Twin Light |
| 0020-20 | 1736178YP | 1 | DEFLECTOR |
| 0020-40 | 1736180YP | 2 | SOCKET & GASKET ASSEMBLY, Headlight |
| 0020-50 | 1736181YP | 2 | BULB, Headlight, 12V 15W (1156) |
| 0030 | 706481 | 1 | COVER, Light Panel |
| 0040 | 7091105YP | 7 | SCREW, Hex Washer Head, #10-16 x 1/2 |
| 0050 | 703232 | 3 | NUT, Hex Lock, 1/4-20, ESNA |
| 0060 | 708701 | 3 | SCREW, Allen Head, 1/4-20 x 1-1/2 |
| 0070 | 706483 | 1 | HARNESS, Wiring -(-Used Before Serial No. 2017430819) |
| 0070 | 708158 | 1 | HARNESS, Wiring with Remote Rectifier -(-Used After Serial No. 2017430818) |
| 0080 | 1754865YP | 1 | SWITCH, Chute Rotation -(-Used Before Serial No. 2017430819) (Order 0600 When Bottom View of Switch Terminal Pattern Matches 0080.) |
| 0080 | 709954 | 1 | SWITCH, Chute Rotation -(-Used After Serial No. 2017430818) |
| 0090 | 7024649YP | 4 | WIRE TIE, 11 Inch Standard Black Nylon |
| 0600 | 1687904 | 1 | WIRE HARNESS ADAPTER KIT, CHUTE ROTATION |
| 0600-10 | 709954 | 1 | SWITCH, Chute Rotation |
| 0600-20 | 84003010 | 1 | HARNESS, Wire |

Wheel & Body Covering Group

Note: Unless noted otherwise, use the standard torque specifications

Mfg. No: 1696741-00



Wheel & Body Covering Group

| REF NO | PART NO | QTY | DESCRIPTION |
|--------|-----------|-----|--|
| 0010 | 770586 | 1 | KIT, COVER, Top |
| 0020 | 770587 | 1 | COVER, Drive Case, Black |
| 0025 | 770588 | 1 | COVER, Side |
| 0030 | 1750777YP | 1 | CAPSCREW, Hex Washer Head, 1/4 x 20 x 2 |
| 0040 | 703232 | 2 | NUT, Nylock, 1/4 |
| 0050 | 7091081SM | 2 | SCREW, 1/4-15X3/4, Self-Tapping, BZ |
| 0060 | 704130 | 7 | SCREW, Hex Washer Head, Trilob, 1/4-20 x 1/2 |
| 0070 | 311237YP | 2 | WHEEL, 2 x 8, Plastic 1/2 |
| 0100 | 703179 | 2 | PUSHNUT, 1/2 |
| 0120 | 770056 | 2 | CLIP NUT |
| 0130 | 708735 | 1 | COVER, Chute Moisture |
| 0150 | 316042MA | 1 | SCREW, Hex Washer Head, #10-HL x 5/8 |

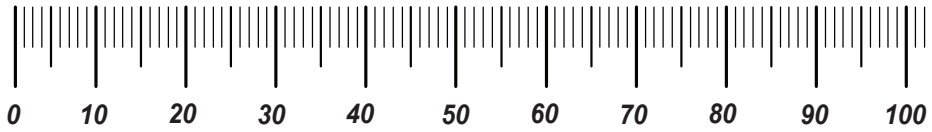
Not For Reproduction

Hardware Identification & Torque Specifications

| Torque Specification Chart | | | | | | | | |
|--|-----------|------|-----------|------|------------|------|------------|------|
| FOR STANDARD METRIC MACHINE HARDWARE (Tolerance ± 20%) | | | | | | | | |
| Property Class | 5.6 | | 8.8 | | 10.9 | | 12.9 | |
| | Class 5.6 | | Class 8.8 | | Class 10.9 | | Class 12.9 | |
| Size Of Hardware | in/lbs | Nm. | in/lbs | Nm. | in/lbs | Nm. | in/lbs | Nm. |
| | ft/lbs | | ft/lbs | | ft/lbs | | ft/lbs | |
| M3 | 5.88 | .56 | 13.44 | 1.28 | 19.2 | 1.80 | 22.92 | 2.15 |
| M4 | 13.44 | 1.28 | 30.72 | 2.90 | 43.44 | 4.10 | 52.56 | 4.95 |
| M5 | 26.4 | 2.50 | 60.96 | 5.75 | 5.97 | 8.10 | 7.15 | 9.7 |
| M6 | 44.64 | 4.3 | 7.3 | 9.9 | 10.3 | 14 | 12.1 | 16.5 |
| M7 | 5.2 | 7.1 | 12.1 | 16.5 | 16.9 | 23 | 19.9 | 27 |
| M8 | 7.7 | 10.5 | 17.7 | 24 | 25 | 34 | 29 | 40 |
| M10 | 15 | 21 | 35 | 48 | 50 | 67 | 59 | 81 |
| M12 | 26 | 36 | 61 | 83 | 86.2 | 117 | 103 | 140 |
| M14 | 42 | 58 | 101 | 132 | 136 | 185 | 162 | 220 |
| M16 | 64 | 88 | 147 | 200 | 210 | 285 | 250 | 340 |
| M18 | 89 | 121 | 202 | 275 | 287 | 390 | 346 | 470 |
| M20 | 126 | 171 | 290 | 390 | 405 | 550 | 486 | 660 |
| M22 | 169 | 230 | 390 | 530 | 559 | 745 | 656 | 890 |
| M24 | 217 | 295 | 497 | 375 | 708 | 960 | 840 | 1140 |
| M27 | 320 | 435 | 733 | 995 | 1032 | 1400 | 1239 | 1680 |
| M30 | 435 | 590 | 995 | 1350 | 1401 | 1900 | 1681 | 2280 |
| M33 | 590 | 800 | 1349 | 1830 | 1902 | 2580 | 2278 | 3090 |
| M36 | 759 | 1030 | 1740 | 2360 | 2441 | 3310 | 2935 | 3980 |
| M39 | 988 | 1340 | 2249 | 3050 | 3163 | 4290 | 3798 | 5150 |

| Torque Specification Chart | | | | | | |
|---|-------------|-------|-------------|-------|-------------|---------|
| FOR STANDARD MACHINE HARDWARE (Tolerance ± 20%) | | | | | | |
| Hardware Grade | No Marks | | SAE Grade 5 | | SAE Grade 8 | |
| | SAE Grade 2 | | SAE Grade 5 | | SAE Grade 8 | |
| Size Of Hardware | in/lbs | Nm. | in/lbs | Nm. | in/lbs | Nm. |
| | ft/lbs | | ft/lbs | | ft/lbs | |
| 8-32 | 19 | 2.1 | 30 | 3.4 | 41 | 4.6 |
| 8-36 | 20 | 2.3 | 31 | 3.5 | 43 | 4.9 |
| 10-24 | 27 | 3.1 | 43 | 4.9 | 60 | 6.8 |
| 10-32 | 31 | 3.5 | 49 | 5.5 | 68 | 7.7 |
| 1/4-20 | 66 | 7.6 | 8 | 10.9 | 12 | 16.3 |
| 1/4-28 | 76 | 8.6 | 10 | 13.6 | 14 | 19.0 |
| 5/16-18 | 11 | 15.0 | 17 | 23.1 | 25 | 34.0 |
| 5/16-24 | 12 | 16.3 | 19 | 25.8 | 29 | 34.0 |
| 3/8-16 | 20 | 27.2 | 30 | 40.8 | 45 | 61.2 |
| 3/8-24 | 23 | 31.3 | 35 | 47.6 | 50 | 68.0 |
| 7/16-14 | 30 | 40.8 | 50 | 68.0 | 70 | 95.2 |
| 7/16-20 | 35 | 47.6 | 55 | 74.8 | 80 | 108.8 |
| 1/2-13 | 50 | 68.0 | 75 | 102.0 | 110 | 149.6 |
| 1/2-20 | 55 | 74.8 | 90 | 122.4 | 120 | 163.2 |
| 9/16-12 | 65 | 88.4 | 110 | 149.6 | 150 | 204.0 |
| 9/16-18 | 75 | 102.0 | 120 | 163.2 | 170 | 231.2 |
| 5/8-11 | 90 | 122.4 | 150 | 204.0 | 220 | 299.2 |
| 5/8-18 | 100 | 136 | 180 | 244.8 | 240 | 326.4 |
| 3/4-10 | 160 | 217.6 | 260 | 353.6 | 386 | 525.0 |
| 3/4-16 | 180 | 244.8 | 300 | 408.0 | 420 | 571.2 |
| 7/8-9 | 140 | 190.4 | 400 | 544.0 | 600 | 816.0 |
| 7/8-14 | 155 | 210.8 | 440 | 598.4 | 660 | 897.6 |
| 1-8 | 220 | 299.2 | 580 | 788.8 | 900 | 1,244.0 |
| 1-12 | 240 | 326.4 | 640 | 870.4 | 1,000 | 1,360.0 |

The guides and ruler furnished below are designed to help you select the appropriate hardware.

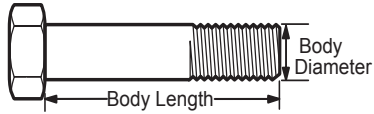


Nut, M8

Thread Diameter (mm)

Inside Diameter (in) Threads per inch

Nut, 1/2-16

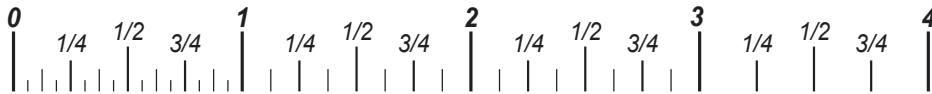


Screw, M8- 1.25 x 25

Thread Diameter (mm) Distance between threads (mm) Body Length (mm)

Body Diameter Threads per inch Body Length (in)

Screw, 1/2- 16 x 2



Standard Hardware Sizing

When a washer or nut is identified as 1/2" (M8), this is the *Nominal size*, meaning the *inside diameter* is 1/2 inch (8mm metric thread diameter); if a second number is present it represents the *threads per inch* (distance between threads).

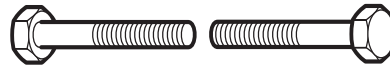
When bolt or capscrew is identified as 1/2 - 16 x 2" (M8 - 1.25 x 50), this means the *Nominal size*, or body diameter is 1/2 inch (8mm metric thread diameter), the second number, 16, represents the *threads per inch*, (*distance between threads*). The final number is the body length of the bolt or screw, 2 inches (50mm).

NOTES

- These torque values are to be used for all hardware excluding: locknuts, self-tapping screws, thread forming screws, sheet metal screws and socket head setscrews.
- Recommended seating torque values for locknuts:
 - for prevailing torque locknuts - use 65% of grade 5 torques.
 - for flange whizlock nuts and screws - use 135% of grade 5 torques.
- Unless otherwise noted on assembly drawings, all torque values must meet this specification.

Common Hardware Types

Hex Head Capscrew



Washer



Carriage Bolt



Hex Nut

Wrench & Fastener Size Guide

| | | | | |
|----------------------------------|----------------------------------|----------------------------------|--|---------------------------------|
| | | | | |
| 1/4" Bolt or Nut Wrench—7/16" | 5/16" Bolt or Nut Wrench—1/2" | 3/8" Bolt or Nut Wrench—9/16" | 7/16" Bolt or Nut Wrench (Bolt)—5/8" Wrench (Nut)—11/16" | 1/2" Bolt or Nut Wrench—3/4" |
| M6 Bolt or Nut Wrench—10mm | M8 Bolt or Nut Wrench—13mm | M10 Bolt or Nut Wrench—17mm | M12 Bolt or Nut Wrench—19mm | M14 Bolt or Nut Wrench—22mm |

