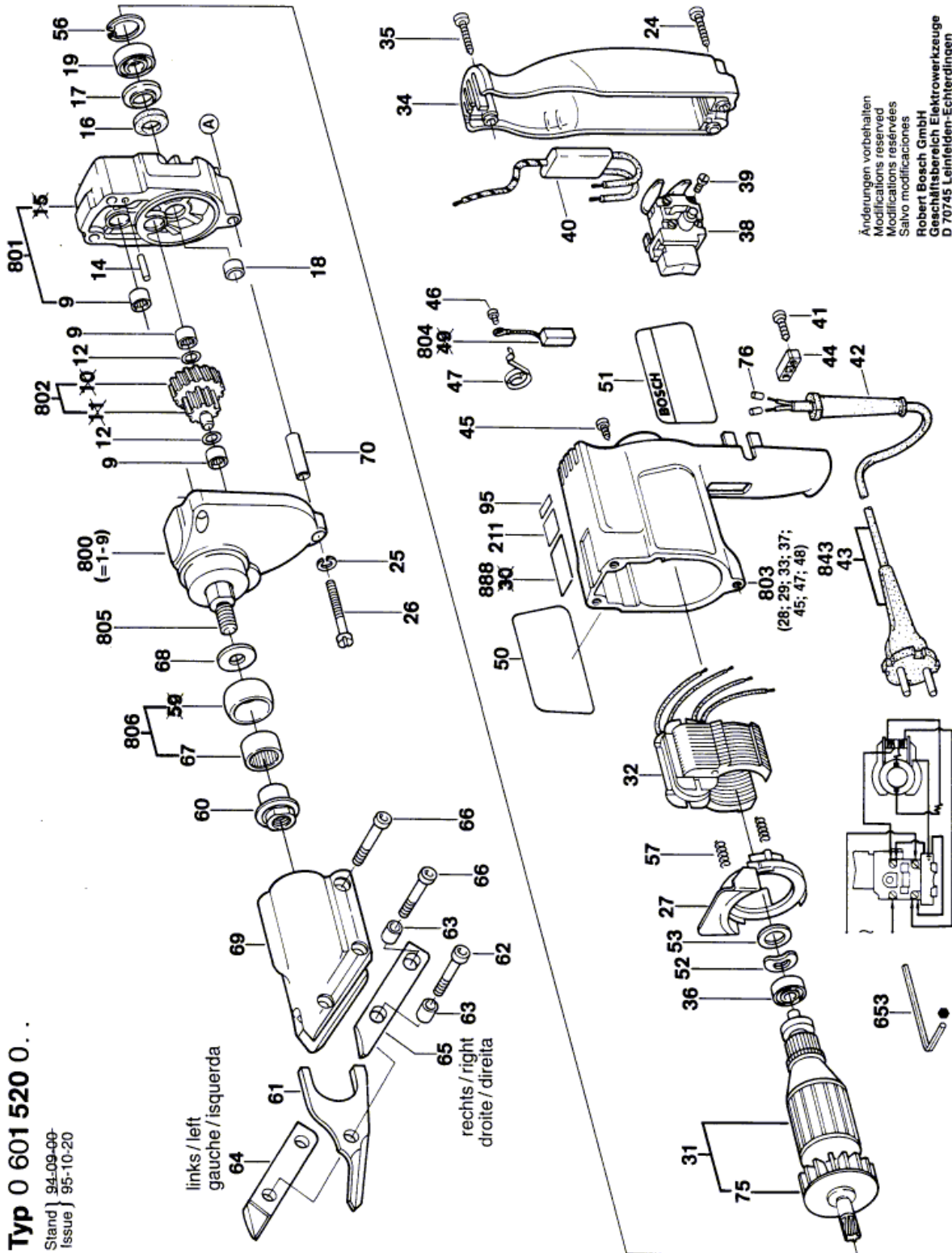


Illustration - Type E



Änderungen vorbehalten
 Modifications reserved
 Modificacions reservades
 Salvo modificaciones
 Robert Bosch GmbH
 Geschäftsbereich Elektrowerkzeuge
 D 70745 Leinfelden-Echterdingen

Information subject to change without further notice.

Slot Shear - 0 601 520 034 - ----

www.powertools-aftersaleservice.com



BOSCH

Item	Part Number	Description	Illustration	Price	Quantity	Price Group
9	2 600 914 010	Needle bearing Ø6 MM	1	-,-	3	14
12	2 600 100 607	Shim 0,3 MM	1	-,-	2	11
14	1 903 201 042	Needle Roller DIN 5402-A3x11,8-G2	1	-,-	1	11
16	2 600 108 000	Felt Disc	1	-,-	1	11
17	2 600 500 030	Cupped Washer	1	-,-	1	11
18	2 600 300 049	Seal Bushing	1	-,-	1	13
19	1 900 905 029	groove ball bearing 8x22x7	1	-,-	1	26
24	2 910 211 021	Tapping Screw DIN 7971-ST3,9x22-F	1	-,-	2	10
26	2 914 501 027	Screw and washer assembly DIN 84-BM 4x35-Z4-8.8	1	-,-	3	16
27	2 601 328 041	Cover Disc	1	-,-	1	14
31	2 604 010 536	Armature With Fan 110-115V	1	-,-	1	-
32	2 604 222 295	Field 110-115V	1	-,-	1	-
34	2 605 132 017	Housing Cover BLUE	1	-,-	1	21
35	2 910 211 220	Tapping Screw DIN 7971-B 3,9x19	1	-,-	1	11
36	1 900 905 018	groove ball bearing 7x22x7	1	-,-	1	29
38	2 607 200 006	On-Off Switch	1	-,-	1	25
39	2 603 410 023	Socket head cap screw M3x10 MM	1	-,-	4	11
41	2 910 211 011	Tapping Screw DIN 7971-BZ3,5x13	1	-,-	2	10
42	2 600 703 013	Grommet Ø7,6-Ø8,2x95 MM	1	-,-	1	13
43	1 614 460 010	Power supply cord USA/CAN/SMA 2,15m 2 x 0,82mm SJ 16/2	1	-,-	1	25
44	2 601 035 001	Cable Clip	1	-,-	1	11
45	2 603 435 016	Tapping Screw 2,2x6,5	1	-,-	2	11
46	2 914 501 011	Screw and washer assembly DIN7985-M3x6-Z1-4.8	1	-,-	2	10
47	2 604 652 002	Spiral Spring	1	-,-	2	11
50	3 601 110 123	Sticker	1	-,-	1	14
51	3 601 110 067	Sticker	1	-,-	1	15
52	2 600 150 004	Shim	1	-,-	1	11
53	2 600 101 023	Shim 0,3 MM	1	-,-	1	11
53	2 600 101 022	Shim 0,2 MM	1	-,-	1	11
53	2 600 101 020	Shim 0,5 MM	1	-,-	1	11
56	2 600 119 000	Spring retaining ring	1	-,-	1	11
57	2 604 611 026	Compression Spring	1	-,-	2	11

Item	Part Number	Description	Illustration	Price	Quantity	Price Group
60	2 602 210 005	Eccentric Bushing	1	-,-	1	29
61	2 608 635 093	Lower Blade	1	-,-	1	47
62	2 603 414 044	Hex Socket Head Cap Screw	1	-,-	1	14
63	2 600 300 072	Bushing	1	-,-	2	17
64	2 608 635 094	Upper Blade	N/A	-,-	1	41
65	2 608 635 095	Upper Blade	1	-,-	1	39
66	2 910 141 166	Hex Socket Head Cap Screw DIN 912-M 5x30-8.8	1	-,-	2	11
67	2 600 914 018	Needle bearing	1	-,-	1	20
68	2 600 101 672	Shim	1	-,-	1	11
69	2 605 806 348	Gear Housing	N/A	-,-	1	42
70	2 600 409 013	Centering Sleeve	1	-,-	3	11
75	2 606 610 021	Fan	1	-,-	1	-
200	1 900 452 012	End Splice DIN 46 228-A1-6	N/A	-,-	2	10
653	2 607 950 004	Offset Screwdriver DIN 911-4	1	-,-	1	11
800	2 605 806 967	Gear Housing BLUE	1	-,-	1	45
801	2 605 700 927	Intermediate Flange	1	-,-	1	32
802	2 606 311 902	Toothed Shaft Z=21/41	1	-,-	1	38
803	2 605 104 960	Motor Housing BLUE	1	-,-	1	31
804	2 604 320 902	Carbon-Brush Set	1	-,-	1	21
805	2 603 123 010	Drilling Spindle	1	-,-	1	31
806	2 600 290 901	Bearing Sleeve	1	-,-	1	35
888	1 601 106 032	Nameplate 26x52 MM	1	-,-	1	13