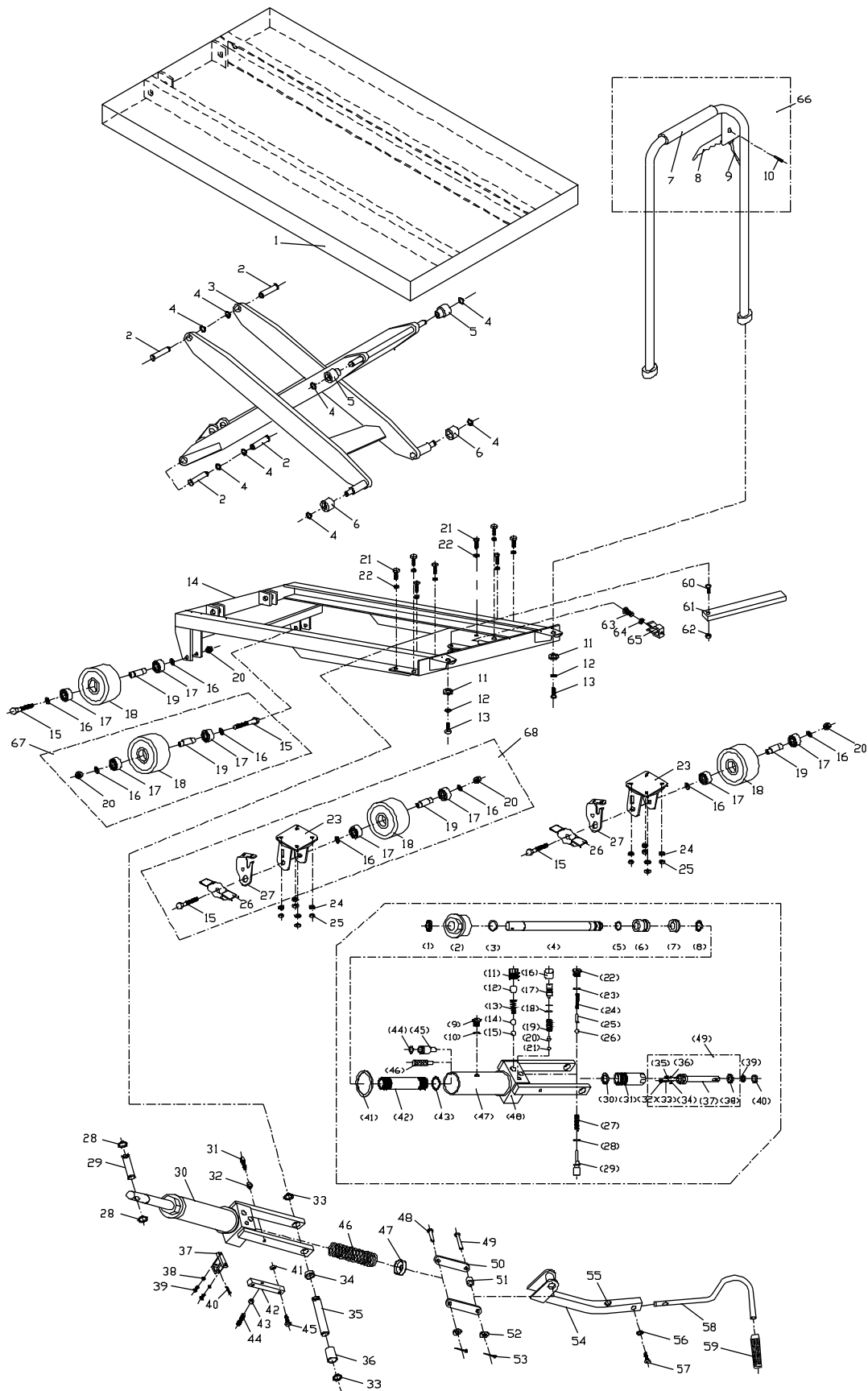


Parts Breakdown for SLT-1100 Scissor Lift Table



Parts List for SLT-1100 Scissor Lift Table

Index No.	Part No.	Description	Size	Qty
1	SLT1100-01	Table		1
2	SLT1100-06	Link Shaft		4
3	SLT1100-02	Link Assembly		1
4	SLC660F-03	C-Ring	M16	8
5	SLT1100-04	Roller Guide		2
6	SLT1100H-06	Roller Guide		2
7	SLT1100H-07	Handle		1
8	SLT660FH-09	Release Lever		1
9	SLT660FH-10	Cable		1
10	SLT660FH-11	Spring Pin	Ø 6x28 mm	1
11	TS-2361021	Washer	Ø 12mm	2
12	TS-2361121	Spring Washer	Ø 12mm	2
13	Ts-1492011	Hex Cap Screw	M12x25	2
14	SLT1100H-14	Frame		1
15	SLT660FH-25	Hex Cap Screw	M12x95	4
16	SLT660FH-26	Washer		8
17	BB-6203ZZ	Bearing	6203ZZ	8
18	SLT660FH-28	Wheel	Ø 5"	4
19	SLT660FH-29	Bushing		4
20	TS-2342121	Lock Nut	M12	4
21	TS-1490031	Hex Cap Screw	M8x20	8
22	TS-1551061	Lock Washer	Ø 8mm	8
23	SLT660FH-33	Swivel Wheel Holder		2
24	TS-1551061	Lock Washer	Ø 8mm	8
25	TS-1541031	Lock Nut	M8	8
26	SLT660FH-36	Brake Plate		2
27	SLT660FH-37	Stop Support		2
28	SLT660FH-38	C-Ring	Ø18mm	2
29	SLT660FH-39	Shaft		1
30	SLT1100H-30	Hydraulic Cylinder Assembly		1
[1]	SLT660F-36-1	Oil Seal*	DHS30	1
[2]	SLT1100-30-2	Top Nut		1
[3]	SLT660F-36-3	O-Ring*	Ø 36x3.5 mm	1
[4]	DSLT770H-35-4	Lift Piston		1
[5]	DSLT770H-35-5	O-Ring*	Ø 21x2.4 mm	1
[6]	DSLT770H-35-6	Piston Bushing		1
[7]	DSLT770H-35-7	U-Packing*	D50	1
[8]	DSLT770H-35-8	C-Ring	Ø 22 mm	1
[9]	SLT660F-36-8	Air Breather		1
[10]	SLT660F-36-9	O-Ring*	Ø 11x1.9 mm	1
[11]	SLT660F-36-16	Valve Plug	M16x2	1
[12]	SB-12MM	Steel Ball	Ø 12mm	1
[13]	SLT660F-36-18	Spring		1
[14]	SLT660F-36-19	Steel Ball	Ø 9.525 mm	1
[15]	SLT660F-36-20	Steel Ball	Ø 6.35 mm	1
[16]	SLT660F-36-10	Relief Plug Cover		1
[17]	SLT660F-36-11	Relief Adjusting Screw		1
[18]	SLT660F-36-9	O-Ring*	Ø 11 x 1.9 mm	2
[19]	SLT660F-36-13	Spring		1
[20]	SLT660F-36-14	Steel Ball Support		1
[21]	SB-5MM	Steel Ball	Ø 5 mm	1
[22]	SLT660F-36-21	Screw	M10 x 1	1
[23]	SLT660F-36-9	O-Ring*	Ø 11 x 1.9 mm	1
[24]	SLT660F-36-23	Spring		1
[25]	SLT660FH-40-24	Steel Ball Support		1
[26]	SB-5MM	Steel Ball	Ø 5 mm	1

Index No.	Part No.	Description	Size	Qty
[27]	SLT660F-36-25	Spring		1
[28]	SLT660F-36-26	O-Ring*	Ø 10 x 1.9 mm	1
[29]	SLT660F-36-27	Adjusting Shaft		1
[30]	SLT660FH-40-29	Inner Washer*		1
[31]	SLT660F-36-29	Pump Cylinder		1
[32]	SLT660F-36-32	Screw		1
[33]	SLT660F-36-33	Valve Plug		1
[34]	SLT660F-36-34	Spring		1
[35]	SLT660F-36-30	Screw		1
[36]	SB-5MM	Steel Ball	Ø 5 mm	1
[37]	SLT660F-36-36	Pump Piston		1
[38]	SLT660F-36-35	Oil Seal*	UHS23.5	1
[39]	SLT660F-36-37	Oil Seal*	UHS18	1
[40]	SLT660F-36-38	U-Packing*	DHS18	1
[41]	DSL770FH-35-41	Outer Washer*		2
[42]	DSL770FH-35-42	Inside Cylinder Tube		1
[43]	DSL770FH-35-43	Inside Washer*		1
[44]	SLT660FH-40-43	O-Ring*	Ø 12 x 1.9mm	1
[45]	SLT660FH-40-44	Special Lowering Valve		1
[46]	SLT660FH-40-45	Filter		1
[47]	DSL770FH-35-47	Outer Cylinder Tube		1
[48]	DSL770FH-35-48	Pump Body		1
[49]	DSL770H-35-49	Pump Piston Assembly ([32-38])		1
31	SLT660FH-41	Adjusting Screw		1
32	TS-2311081	Hex Nut	M8	1
33	SLC660F-38	C-Ring	Ø 20mm	2
34	SLT660FH-44	Bushing		1
35	SLC660F-39	Shaft		1
36	SLT660FH-46	Bushing		1
37	SLT660F-67	Fixed Seat		1
38	TS-1551031	Spring Washer	Ø 5mm	2
39	SLT660F-74	Screw	M5 x 14	2
40	SLT660F-69	Spring Pin	Ø 6 x 22	1
41	TS-2311081	Hex Nut	M8	1
42	SLT660F-73	Fixed Board		1
43	SLT660F-70	Hex Nut	M8	1
44	SLT660F-71	Socket Set Screw	M8 x 30	1
45	TS-1490041	Hex Cap Screw	M8 x 25	1
46	SLC660F-40	Spring		1
47	SLC660F-41	Spring Cover		1
48	SLT660FH-58	Pin		1
49	SLT660FH-59	Pin		1
50	SLC660F-42	Slide Plate		1
51	SLC660F-56	Bushing		1
52	SLT660FH-62	Washer	Ø 10mm	2
53	SLT660FH-63	Split Pin	Ø 3 x 30mm	2
54	SLC660F-45	Lever		1
55	SLC660F-45A	Rubber Bumper		1
56	SLT660FH-22	Spring Washer	Ø 8mm	1
57	TS-1490051	Hex Cap Screw	M8 x 30	1
58	SLC660F-46	Foot Lever		1
59	SLC660F-47	Foot Lever Pad		1
60	SLT660FH-70	Hex Cap Screw	M10 x 30	1
61	SLT1100FH-61	Safety Bar		1
62	SLT660FH-72	Hex Nut	M10	1
63	SLT660FH-73	Hex Cap Screw	M6 x 10	1
64	SLT660FH-74	Spring Washer	Ø 6mm	1

Index No.	Part No.	Description	Size	Qty
65	SLT660FH-75	Spring Clip		1
66	SLT1100H-66	Handle Assembly (index #7-10)		1
67	SLT660FH-77	Front Wheel Assembly (index # 15-20)		1
68	SLT660FH-78	Swivel Wheel Assembly (index #15-20, 23-27)		1
	SLT1100-RK	Repair Kit		1

Index numbers with brackets [] are part of the hydraulic pump assembly.

Parts included in the Repair Kit are indicated by an asterisk *.