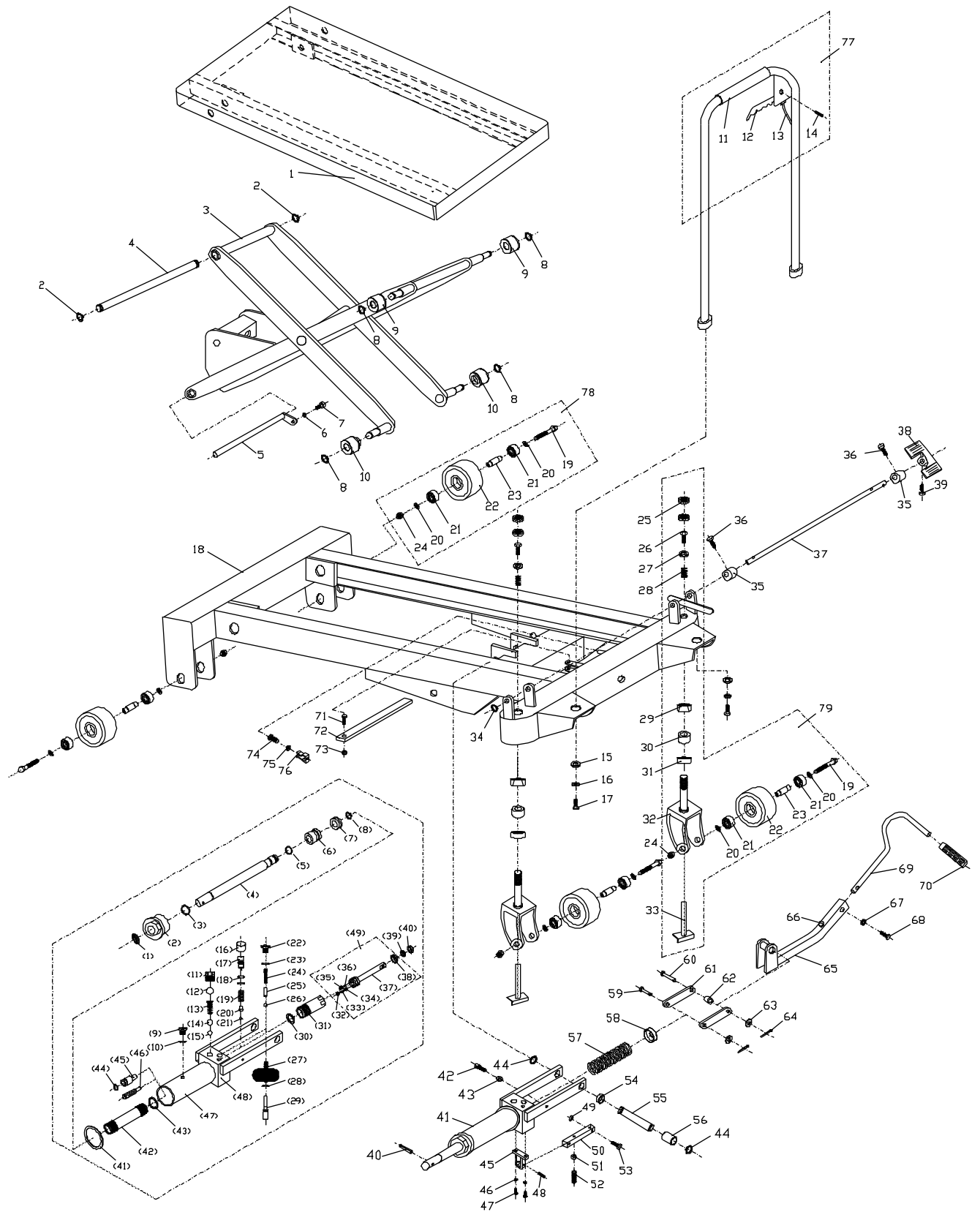


Parts Breakdown for SLT-1650 Scissor Lift Table



Parts List for SLT-1650 Scissor Lift Table

Index No.	Part No.	Description	Size	Qty
1	SLC1650-1	Table		1
2	SLC660F-38	C-Ring	Ø 20 mm	2
3	SLC1650-2	Link Assembly		1
4	SLC1650-3	Link Shaft		1
5	SLC1650-6	Link Shaft		1
6	SLT660FH-22	Spring Washer	Ø 8 mm	1
7	SLT660FH-20	Hex Cap Screw	M8 x 20	1
8	SLC1650-4	C-Ring	Ø 22 mm	4
9	SLT1650H-09	Roller Guide		2
10	SLT1650H-10	Roller Guide		2
11	SLT1650H-11	Handle		1
12	SLT660FH-09	Release Lever		1
13	SLT660FH-10	Cable		1
14	SLT660FH-11	Spring Pin	Ø 6 x 28 mm	1
15	SLT1650-29	Flat Washer	Ø 12 mm	2
16	SLT1650-61	Spring Washer	Ø 12 mm	2
17	SLT1650H-17	Hex Cap Screw	M12 x 25	2
18	SLT1650H-18	Frame		1
19	SLT660FH-25	Hex Cap Screw	M12 x 95	4
20	SLT660FH-26	Washer	Ø 12 mm	8
21	BB-6203ZZ	Bearing	6203Z	8
22	SLT1650H-22	Wheel	Ø 6"	4
23	SLT1650H-29	Bushing		4
24	SLT660FH-30	Lock Nut	M12	4
25	SLT1650H-25	Nut	M24 x 1.5	4
26	SLC1650-19	Hex Cap Screw	M10 x 25	2
27	SLC1650-21	Flat Washer	Ø 10 mm	2
28	SLC1650-22	Spring		2
29	BB-30205	Tapered Roller Bearing	30205	2
30	SLT1650H-30	Bushing		2
31	BB-6205	Ball Bearing		2
32	SLT1650H-32	Wheel Holder		2
33	SLT1650H-33	Wheel Shaft Holder		2
34	SLC660F-3	C-Ring	Ø 16 mm	2
35	SLT1650H-35	Block		2
36	SLT1650H-36	Hex Cap Screw	M8 x 25	2
37	SLT1650H-37	Brake Shaft		1
38	SLT1650H-38	Brake Pedal		1
39	SLT1650H-36	Hex Cap Screw	M8 x 25	1
40	SLC1650-41	Spring Pin	Ø 6 x 45 mm	1
41	SLT1650H-41	Hydraulic Pump Assembly		1
[1]	SLT660F-36-1	Oil Seal*	DHS30	1
[2]	SLT1650H-41-2	Top Nut		1
[3]	SLT660F-36-3	O-Ring*	Ø 36x3.5 mm	1
[4]	SLT1650H-41-4	Lift Piston		1
[5]	SLT1650H-41-5	O-Ring*	Ø 21 x 2.4 mm	1
[6]	SLT1650H-41-6	Piston		1
[7]	SLT1650H-41-7	U-Packing*	D50	1
[8]	SLC1650-4	C-Ring	Ø 22 mm	1
[9]	SLT660F-36-8	Air Breather		1
[10]	SLT660F-36-9	O-Ring*	Ø 11x1.9 mm	1
[11]	SLT660F-36-16	Valve Plug	M16x2	1
[12]	SB-12MM	Steel Ball	Ø 12mm	1
[13]	SLT660F-36-18	Spring		1
[14]	SLT660F-36-19	Steel Ball	Ø 9.525 mm	1
[15]	SLT660F-36-20	Steel Ball	Ø 6.35 mm	1
[16]	SLT660F-36-10	Relief Plug		1

Index No.	Part No.	Description	Size	Qty
[17]	SLT660F-36-11	Relief Adjusting Screw		1
[18]	SLT660F-36-9	O-Ring*	Ø 11 x 1.9 mm	2
[19]	SLT660F-36-13	Spring		1
[20]	SLT660F-36-14	Steel Ball Support		1
[21]	SB-5MM	Steel Ball	Ø 5 mm	1
[22]	SLT660F-36-21	Screw	M10 x 1	1
[23]	SLT660F-36-9	O-Ring*	Ø 11 x 1.9 mm	1
[24]	SLT660F-36-23	Spring		1
[25]	SLT660FH-40-24	Steel Ball Support		1
[26]	SB-5MM	Steel Ball	Ø 5 mm	1
[27]	SLT660F-36-25	Spring		1
[28]	SLT660F-36-26	O-Ring*	Ø 10 x 1.9 mm	1
[29]	SLT660F-36-27	Adjusting Shaft		1
[30]	SLT660FH-40-29	Inner Washer*		1
[31]	SLT660F-36-29	Pump Cylinder		1
[32]	SLT660F-36-32	Screw		1
[33]	SLT660F-36-33	Valve Plug		1
[34]	SLT660F-36-34	Spring		1
[35]	SLT660F-36-30	Screw		1
[36]	SB-5MM	Steel Ball	Ø 5 mm	1
[37]	SLT660F-36-36	Pump Piston		1
[38]	SLT660F-36-35	Oil Seal*	UHS23.5	1
[39]	SLT660F-36-37	Oil Seal*	UHS18	1
[40]	SLT660F-36-38	U-Packing*	DHS18	1
[41]	SLT1650H-41-41	Outer Washer*		2
[42]	SLT1650H-41-42	Inside Cylinder Tube		1
[43]	SLT1650H-41-43	Inside Washer*		1
[44]	SLT660FH-40-43	O-Ring*	Ø 12 x 1.9mm	1
[45]	SLT660FH-40-44	Special Lowering Valve		1
[46]	SLT660FH-40-45	Filter		1
[47]	SLT1650H-41-47	Outer Cylinder Tube		1
[48]	SLT1650H-41-48	Pump Body		1
[49]	SLT1650H-41-49	Pump Piston Assembly (index # [32] thru [38])		1
42	SLT660FH-41	Adjusting Screw	M8 x 25	1
43	SLT660F-70	Hex Nut	M8	1
44	SLC660F-38	C-Ring	Ø 20 mm	2
45	SLT660F-67	Fixed Seat		1
46	SLT660F-68	Spring Washer	Ø 5 mm	2
47	SLT660F-74	Hex Cap Screw	M5 x 14	2
48	SLT660F-69	Spring Pin	Ø 6 x 22 mm	1
49	SLT660F-70	Hex Nut	M8	1
50	SLT660F-73	Fixed Board		1
51	SLT660F-70	Hex Nut	M8	1
52	SLT660F-71	Socket Set Screw	M8 x 30	1
53	SLT660F-72	Hex Cap Screw	M8 x 25	1
54	SLT660FH-44	Bushing		1
55	SLC660F-39	Shaft		1
56	SLT660FH-46	Bushing		1
57	SLT1650H-57	Spring		1
58	SLC660F-41	Spring Cover		1
59	SLT660FH-58	Pin		1
60	SLT660FH-59	Pin		1
61	SLT1650H-61	Slide Plate		1
62	SLT1650H-62	Bushing		1
63	SLT660FH-62	Washer	Ø 10 mm	2
64	SLT660FH-63	Split Pin	Ø 3 x 30 mm	2
65	SLT1650H-65	Lever		1

Index No.	Part No.	Description	Size	Qty
66	SLC660F-45A	Rubber Bumper		1
67	SLT660FH-22	Spring Washer	Ø 8 mm	1
68	SLT660FH-67	Hex Cap Screw	M8 x 30	1
69	SLT1650H-69	Foot Lever		1
70	SLC660F-47	Foot Lever Pad		1
71	SLT660FH-70	Hex Cap Screw	M10 x 30	1
72	SLT1650H-72	Safety Bar		1
73	SLT660FH-72	Hex Nut	M10	1
74	SLT660FH-73	Hex Cap Screw	M6 x 10	1
75	SLT660FH-74	Spring Washer	Ø 6mm	1
76	SLT660FH-75	Spring Clip		1
77	SLT1650H-77	Handle Assembly (index # 1 thru 14)		1
78	SLT1650H-78	Front Wheel Assembly (index # 25 thru 30)		1
79	SLT1650H-79	Swivel Wheel Assembly (index # 19-33)		1
	SLT1650-RK	Repair Kit		1

Index numbers with brackets [] are part of the hydraulic pump assembly #41.

Parts included in the SLT1650-RK Repair Kit are indicated by an asterisk *.