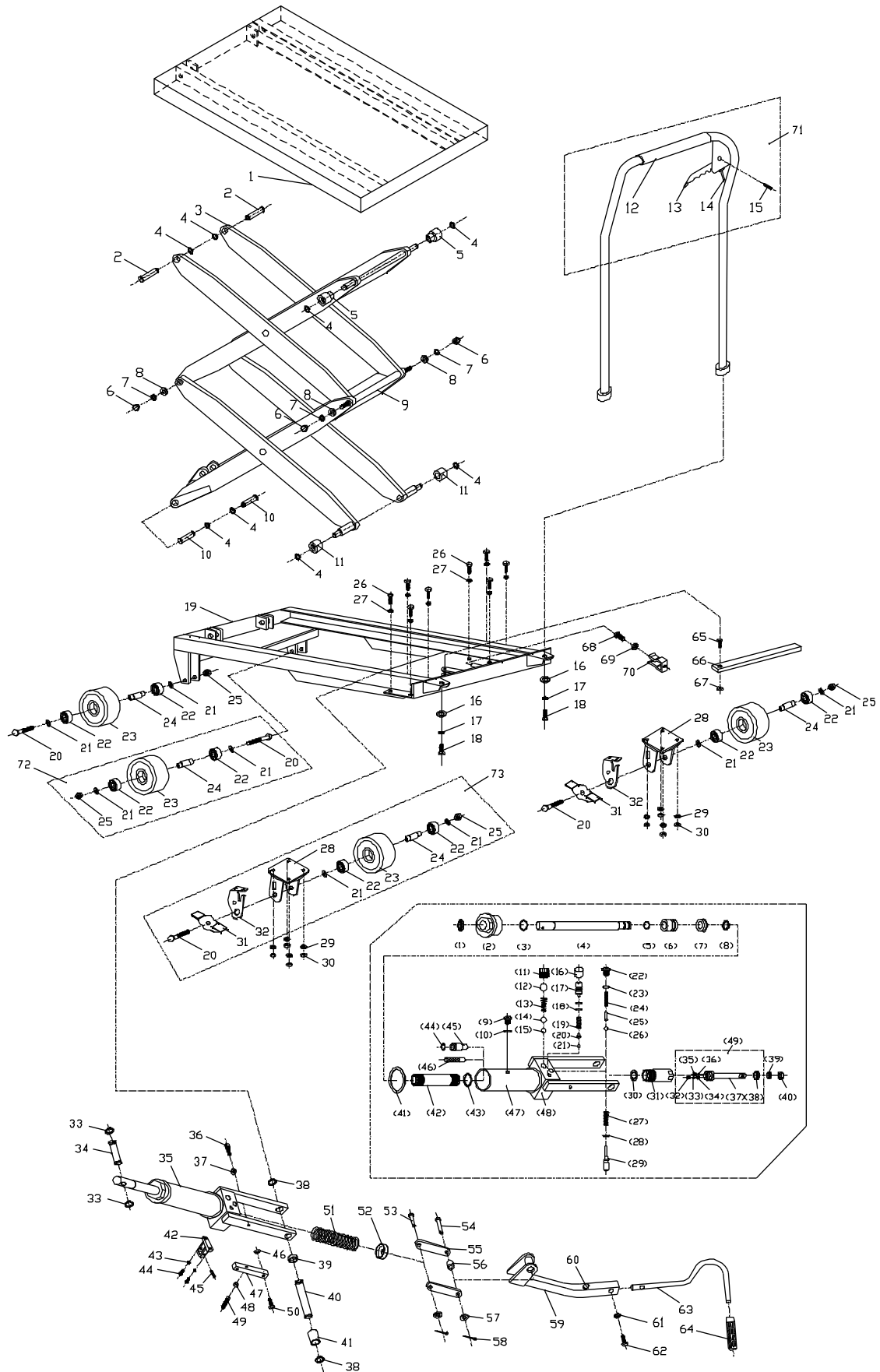


# Parts Breakdown for DSLT-770 Double Scissor Lift Table



## Parts List for DSLT-770 Double Scissor Lift Table

Index No.	Part No.	Description	Size	Qty
1	DSL770-01	Table		1
2	DSL770-06	Link Shaft		2
3	DLS770-02	Link Assembly		1
4	DSL770-03	C-Ring	Ø 16 mm	8
5	DSL770-04	Roller Guide		2
6	DSL770H-06	Nut	M12	4
7	DSL770H-07	Spring Washer	Ø 12 mm	4
8	SLT660FH-26	Washer	Ø 12 mm	4
9	DSL770H-09	Shaft		2
10	DSL770-12	Link Shaft		2
11	DSL770H-11	Roller Guide		2
12	DSL770H-12	Handle		1
13	SLT660FH-09	Release Lever		1
14	SLT660FH-10	Cable		1
15	SLT660FH-11	Spring Pin	Ø 6 x 28 mm	1
16	SLT660FH-26	Washer	Ø 12 mm	2
17	DSL770H-07	Spring Washer	Ø 12 mm	2
18	DSL770H-18	Hex Cap Screw	M12 x 25	2
19	DSL770H-19	Frame		1
20	SLT660FH-25	Hex Cap Screw	M12 x 95	4
21	SLT660FH-26	Washer	Ø 12 mm	8
22	SLT660FH-27	Bearing	6203ZZ	8
23	SLT660FH-28	Wheel	5"	4
24	SLT660FH-29	Bushing		4
25	SLT660FH-30	Lock Nut	M12	4
26	TS-1490031	Hex Cap Screw	M8 x 20	8
27	TS-1550061	Flat Washer	Ø 8 mm	8
28	SLT660FH-33	Swivel Wheel Holder		2
29	TS-1550061	Flat Washer	Ø 8 mm	8
30	TS-1541031	Lock Nut	M8	8
31	SLT660FH-36	Brake Plate		2
32	SLT660FH-37	Stop Support		2
33	SLT660FH-38	C-Ring	Ø 18 mm	2
34	SLT660FH-39	Shaft		1
35	DSL770H-35	Hydraulic Pump Assembly		1
[1]	SLT660F-36-1	Oil Seal*	DHS30	1
[2]	DSL770-35-2	Top Nut		1
[3]	SLT660F-36-3	O-Ring*	Ø 36x3.5 mm	1
[4]	DSL770H-35-4	Lift Piston		1
[5]	DSL770H-35-5	O-Ring*	Ø 21x2.4 mm	1
[6]	DSL770H-35-6	Piston Bushing		1
[7]	DSL770H-35-7	U-Packing*	D50	1
[8]	DSL770H-35-8	C-Ring	Ø 22 mm	1
[9]	SLT660F-36-8	Air Breather		1
[10]	SLT660F-36-9	O-Ring*	Ø 11x1.9 mm	1
[11]	SLT660F-36-16	Valve Plug	M16x2	1
[12]	SB-12MM	Steel Ball	Ø 12mm	1
[13]	SLT660F-36-18	Spring		1
[14]	SLT660F-36-19	Steel Ball	Ø 9.525 mm	1
[15]	SLT660F-36-20	Steel Ball	Ø 6.35 mm	1
[16]	SLT660F-36-10	Relief Plug		1
[17]	SLT660F-36-21	Relief Adjusting Screw		1
[18]	SLT660F-36-22	O-Ring*	Ø 11 x 1.9 mm	2
[19]	SLT660F-36-23	Spring		1

Index No.	Part No.	Description	Size	Qty
[20]	SLT660F-36-14	Steel Ball Support		1
[21]	SB-5MM	Steel Ball	Ø 5 mm	1
[22]	SLT660F-36-21	Screw	M10 x 1	1
[23]	SLT660F-36-9	O-Ring*	Ø 11 x 1.9 mm	1
[24]	SLT660F-36-23	Spring		1
[25]	SLT660FH-40-24	Steel Ball Support		1
[26]	SB-5MM	Steel Ball	Ø 5 mm	1
[27]	SLT660F-36-25	Spring		1
[28]	SLT660F-36-26	O-Ring*	Ø 10 x 1.9 mm	1
[29]	SLT660F-36-27	Adjusting Shaft		1
[30]	SLT660FH-40-29	Inner Washer*		1
[31]	SLT660F-36-29	Pump Cylinder		1
[32]	SLT660F-36-32	Screw		1
[33]	SLT660F-36-33	Valve Plug		1
[34]	SLT660F-36-34	Spring		1
[35]	SLT660F-36-30	Screw		1
[36]	SB-5MM	Steel Ball	Ø 5 mm	1
[37]	SLT660F-36-36	Pump Piston		1
[38]	SLT660F-36-35	Oil Seal*	UHS23.5	1
[39]	SLT660F-36-37	Oil Seal*	UHS18	1
[40]	SLT660F-36-38	U-Packing*	DHS18	1
[41]	DSL770FH-35-41	Outer Washer*		2
[42]	DSL770FH-35-42	Inside Cylinder Tube		1
[43]	DSL770FH-35-43	Inside Washer*		1
[44]	SLT660FH-40-43	O-Ring*	Ø 12 x 1.9mm	1
[45]	SLT660FH-40-44	Special Lowering Valve		1
[46]	SLT660FH-40-45	Filter		1
[47]	DSL770FH-35-47	Outer Cylinder Tube		1
[48]	DSL770FH-35-48	Pump Body		1
[49]	DSL770H-35-49	Pump Piston Assembly (index # [32] thru [38])		1
36	SLT660FH-41	Adjusting Screw		1
37	SLT660F-70	Hex Nut	Ø 8 mm	1
38	SLC660F-38	C-Ring	Ø 20 mm	2
39	SLT660FH-44	Bushing		1
40	SLC660F-39	Shaft		1
41	SLT660FH-46	Bushing		1
42	SLT660F-67	Fixed Seat		1
43	SLT660F-68	Spring Washer	Ø 5 mm	2
44	SLT660F-74	Screw	M5 x 14	2
45	SLT660F-69	Spring Pin	Ø 6 x 22 mm	1
46	TS-2311081	Hex Nut	M8	1
47	SLT660F-73	Fixed Board		1
48	SLT660F-70	Hex Nut	M8	1
49	SLT660F-71	Socket Set Screw	M8 x 30	1
50	SLT660F-72	Hex Cap Screw	M8 x 25	1
51	SLC660F-40	Spring		1
52	SLC660F-41	Spring Cover		1
53	SLT660FH-58	Pin		1
54	SLT660FH-59	Pin		1
55	SLC660F-42	Slide Plate		1
56	SLC660F-56	Bushing		1
57	TS-1550071	Washer	Ø 10 mm	2
58	SLT660FH-63	Lock Pin	Ø 3 x 30 mm	2
59	SLC660F-45	Lever		1
60	SLC660F-45A	Rubber Bumper		1
61	TS-2361081	Spring Washer	Ø 8 mm	1
62	TS-1490051	Hex Cap Screw	M8 x 30	1

Index No.	Part No.	Description	Size	Qty
63	SLC660F-46	Foot Lever		1
64	SLC660F-47	Foot Lever Pad		1
65	SLT660FH-70	Hex Cap Screw	M10 x 30	1
66	DSL770H-66	Safety Bar		1
67	SLT660FH-72	Hex Nut	M10	1
68	SLT660FH-73	Hex Cap Screw	M6 x 10	1
69	SLT660FH-74	Spring Washer	Ø 6 mm	1
70	SLT660FH-75	Spring Clip		1
71	DSL770H-71	Handle Assembly (index # 12 thru 15)		1
72	SLT660FH-77	Front Wheel Assembly (index # 20 thru 25)		1
73	SLT660FH-78	Swivel Wheel Assembly (index # 20-25, 28, 31, 32)		1
	DSL770-RK	Repair Kit		1

Index numbers with brackets [ ] are part of the Hydraulic Pump Assembly, DSL770H-35.

Parts included in the Repair Kit are indicated by an asterisk \*.